

FOR LEASE

PROVIDENT BUILDING

917 PACIFIC AVENUE
TACOMA, WASHINGTON



THE BUILDING

Centrally located 100% renovated office building in downtown Tacoma. Excellent floorplans with abundant natural light, high ceilings, and modern, professional interiors.

- + Adjacent street, surface and covered parking available
- + Professionally managed
- + High volume pedestrian route

AVAILABLE SPACE

- + Size: $\pm 1,000$ - $\pm 5,642$ SF
- + Price: \$18-\$20/SF gross
- + Generous TI allowance

Floor	SF
2nd	$\pm 1,000$ - $\pm 5,642$



CONTACT US

JOHN BAUDER

First Vice President
+1 253 596 0047
john.bauder@cbre.com

HARRISON LAIRD

Senior Associate
+1 253 596 0030
harrison.laird@cbre.com

CBRE

1201 Pacific Avenue
Suite 1502
Tacoma, WA 98402

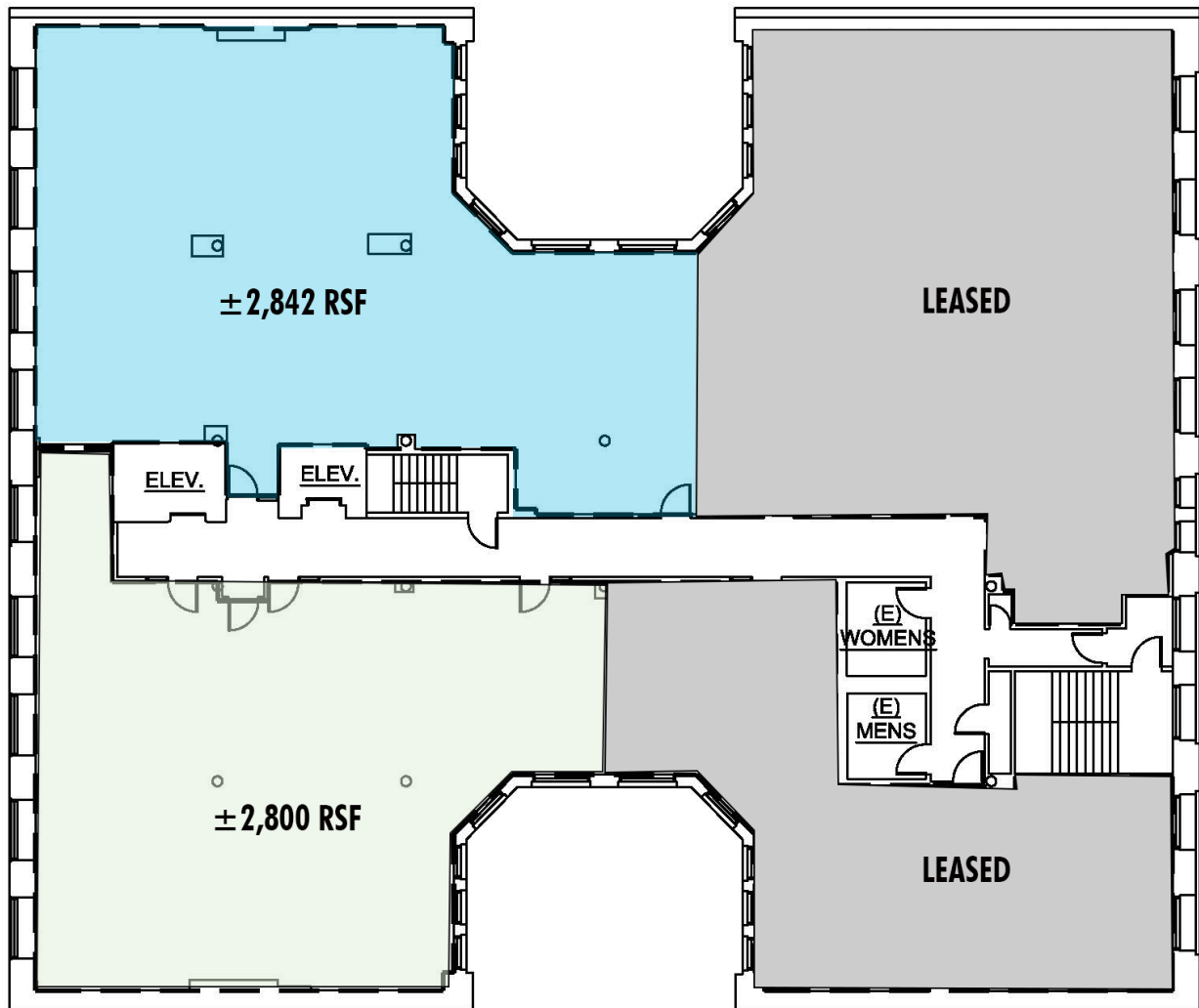
www.cbre.us/tacoma

CBRE

FOR LEASE PROVIDENT BUILDING



2ND FLOOR



Suites can be combined for $\pm 5,642$ SF



CONTACT US

JOHN BAUDER

First Vice President
+1 253 596 0047
john.bauder@cbre.com

HARRISON LAIRD

Senior Associate
+1 253 596 0030
harrison.laird@cbre.com

CBRE

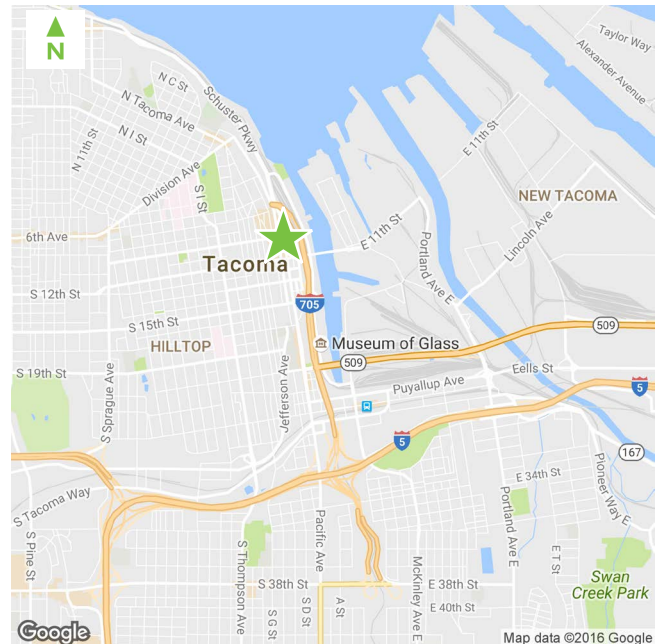
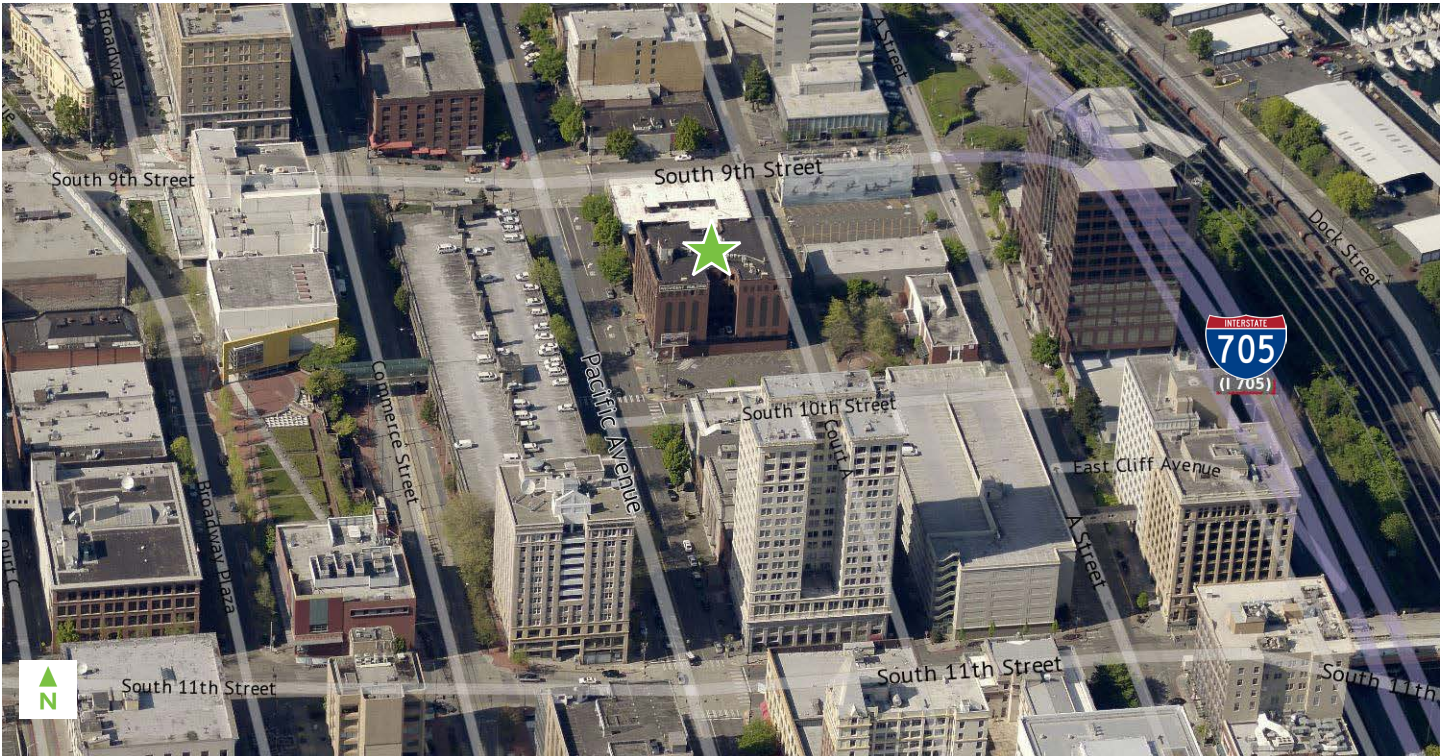
1201 Pacific Avenue
Suite 1502
Tacoma, WA 98402

www.cbre.us/tacoma

CBRE

FOR LEASE PROVIDENT BUILDING

917 PACIFIC AVE
Tacoma, WA



© 2018 CBRE, Inc. This information has been obtained from sources believed reliable. We have not verified it and make no guarantee, warranty or representation about it. Any projections, opinions, assumptions or estimates used are for example only and do not represent the current or future performance of the property. You and your advisors should conduct a careful, independent investigation of the property to determine to your satisfaction the suitability of the property for your needs. Photos herein are the property of their respective owners and use of these images without the express written consent of the owner is prohibited. CBRE and the CBRE logo are service marks of CBRE, Inc. and/or its affiliated or related companies in the United States and other countries. All other marks displayed on this document are the property of their respective owners. RB 08.16.18

www.cbre.us/tacoma

CBRE