

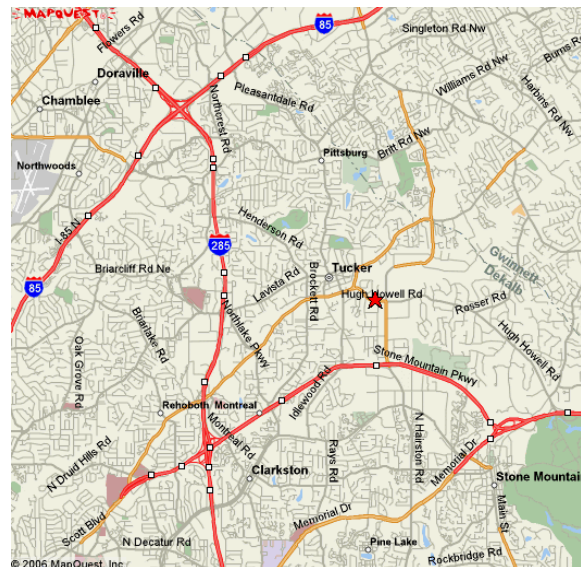
**Property Type: Office Condominiums  
4500 Hugh Howell Road  
Tucker, GA 30084**

**FOR LEASE**



**Heritage Place**

- **584 s.f. – 1,879 s.f.**
- **Below Market Rates**
- **Park at your Front Door**
- **Ground Floor**
- **Located at Hugh Howell and Tucker Industrial Blvd**
- **Available Immediately**



**Dan Decraene**  
Advance Realty Service, Inc.  
770-220-2626

[dan1@advance1.com](mailto:dan1@advance1.com)

[www.advancerealty.net](http://www.advancerealty.net)

Information contained herein has been obtained from the owner of the property or other sources we deem reliable. We have no reason to doubt its accuracy, but we do not guarantee it.

**Outside Photos**  
**4500 Hugh Howell Road**  
***Tucker, GA 30084***

---



Information contained herein has been obtained from the owner of the property or other sources we deem reliable. We have no reason to doubt its accuracy, but we do not guarantee it.

## EXECUTIVE SUMMARY

*4500 Hugh Howell Road*

*Tucker, GA 30084*

---

Total Square Footage of Complex	67,000 s.f.
Number of Buildings	7
Available Space	584 s.f. – 1,879 s.f. all on main floor
Lease Price	\$18.95 s.f. Full Service except for inside Maintenance
Major Tenants in Building	AccuQuest Hearing Center, Edward D. James & Co. Sunrise Medical Center Nations Lending Corporation
Build-out	negotiable

**Dan Decraene**

Advance Realty Service, Inc.

770-220-2626

[dan1@advance1.com](mailto:dan1@advance1.com)

[www.advancerealty.net](http://www.advancerealty.net)

Information contained herein has been obtained from the owner of the property or other sources we deem reliable. We have no reason to doubt its accuracy, but we do not guarantee it.

**HERITAGE PLACE**  
*4500 Hugh Howell Road*  
*Tucker, GA 30084*

---



**Dan Decraene**  
Advance Realty Service, Inc.  
770-220-2626

[dan1@advance1.com](mailto:dan1@advance1.com)

[www.advancerealty.net](http://www.advancerealty.net)

Information contained herein has been obtained from the owner of the property or other sources we deem reliable. We have no reason to doubt its accuracy, but we do not guarantee it.

***FLOOR PLANS***  
***4500 Hugh Howell Road***  
***Tucker, GA 30084***

---

Individual Floor Plans:

584 square feet Suite 270C

620 square feet Suite 620D

1,095 square feet Suite 540

1,879 square feet Suite 640

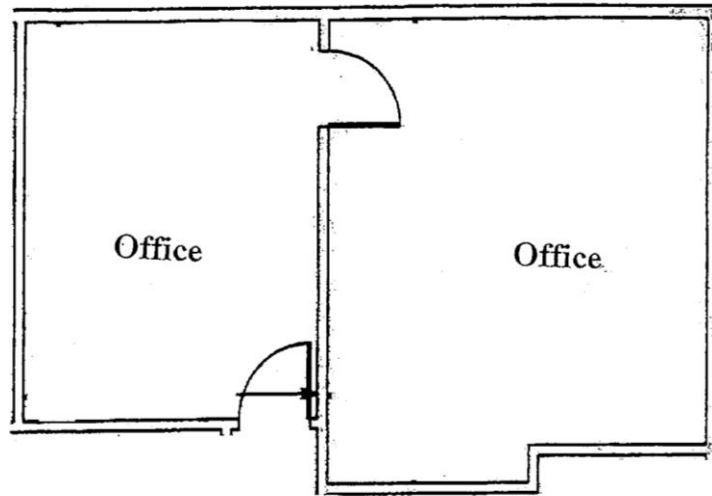
**Dan Decraene**  
Advance Realty Service, Inc.  
770-220-2626

[dan1@advance1.com](mailto:dan1@advance1.com)

[www.advancerealty.net](http://www.advancerealty.net)

***FLOOR PLAN***  
***4500 Hugh Howell, Suite 270C***  
***Tucker GA 30084***

---



**584 Square Feet**

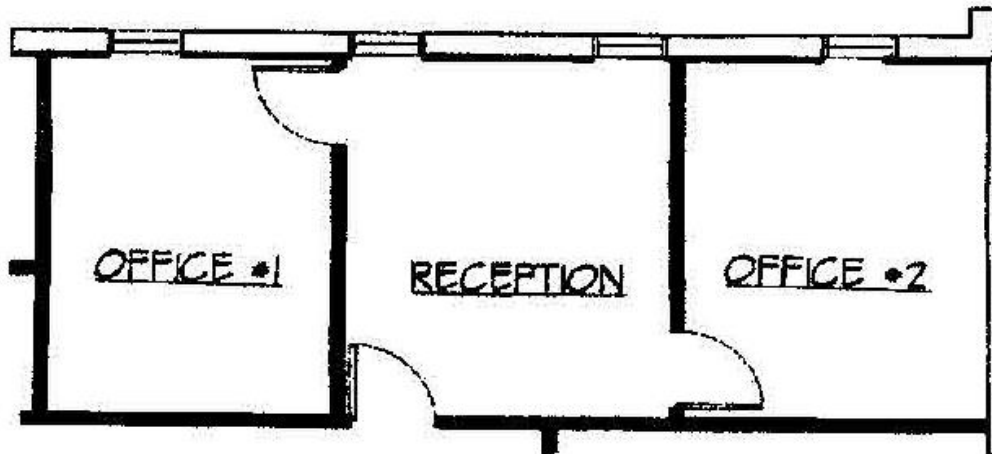
**Dan Decraene**  
Advance Realty Service, Inc.  
770-220-2626

[dan1@advance1.com](mailto:dan1@advance1.com)

[www.advancerealty.net](http://www.advancerealty.net)

***FLOOR PLAN***  
***4500 Hugh Howell, Suite 620D***  
***Tucker GA 30084***

---



**620 Square Feet**

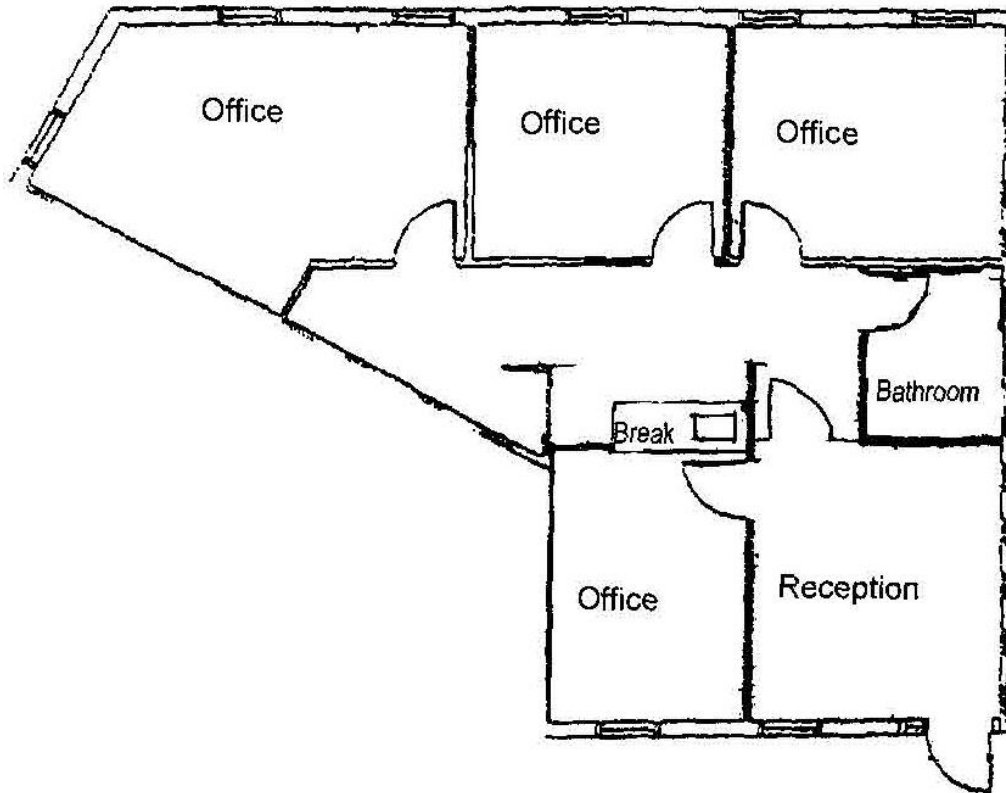
**Dan Decraene**  
Advance Realty Service, Inc.  
770-220-2626

[dan1@advance1.com](mailto:dan1@advance1.com)

[www.advancerealty.net](http://www.advancerealty.net)

***FLOOR PLAN***  
***4500 Hugh Howell, Suite 540***  
***Tucker GA 30084***

---



**1,095 Square Feet**

**Dan Decraene**  
Advance Realty Service, Inc.  
770-220-2626

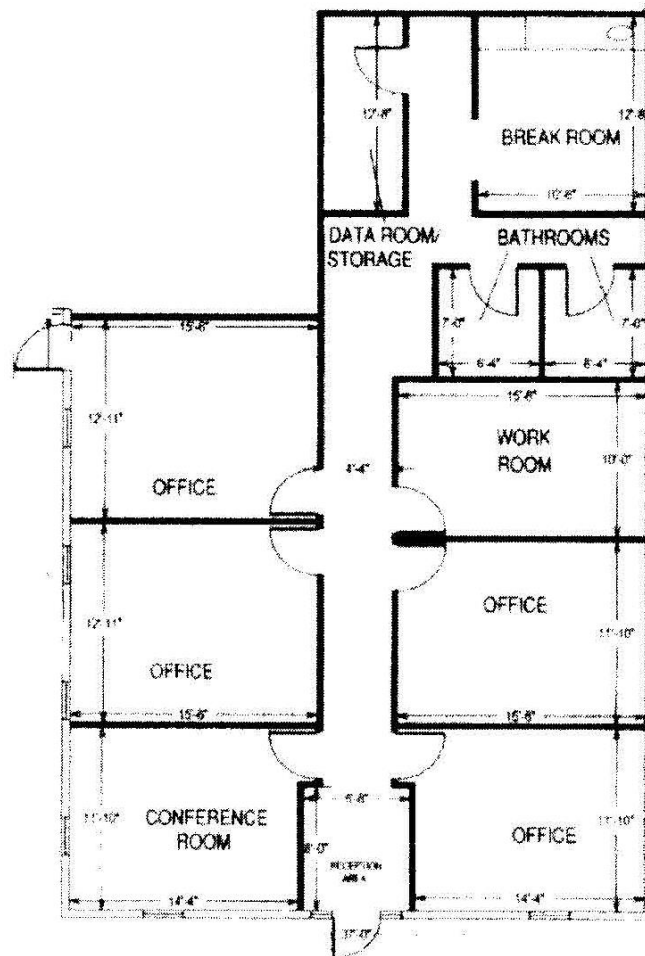
[dan1@advance1.com](mailto:dan1@advance1.com)

[www.advancerealty.net](http://www.advancerealty.net)



***FLOOR PLAN***  
***4500 Hugh Howell, Suite 640***  
***Tucker GA 30084***

---



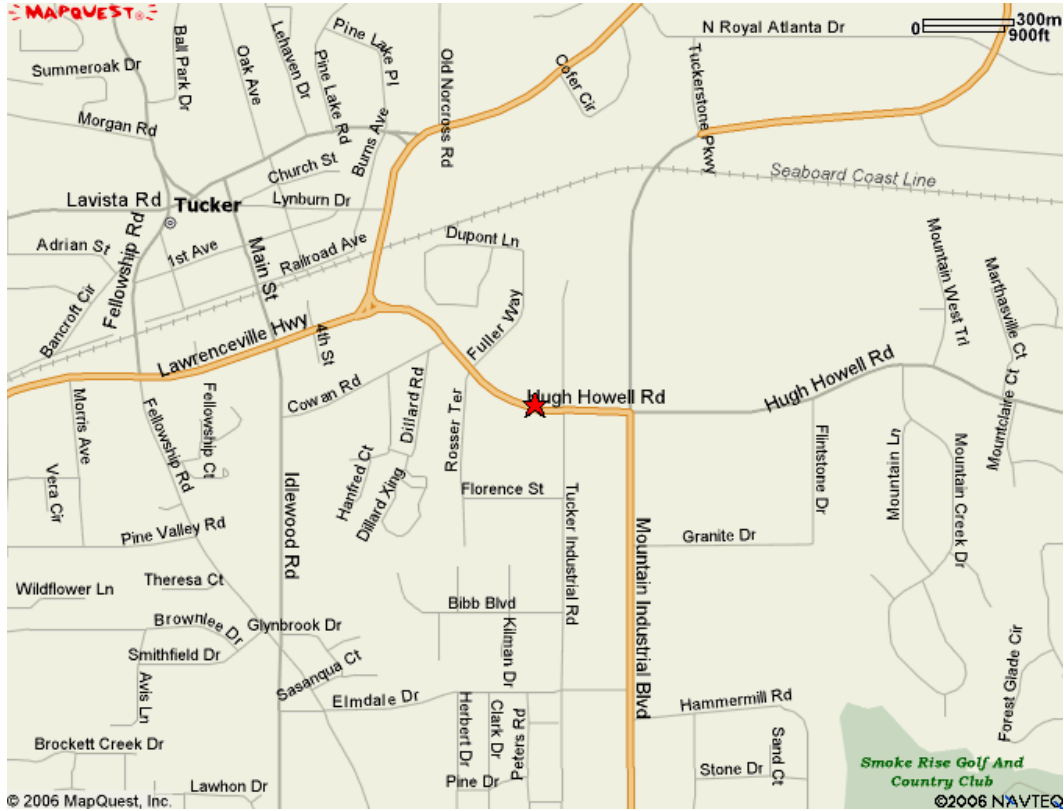
**1,879 Square Feet**

**Dan Decraene**  
Advance Realty Service, Inc.  
770-220-2626

[dan1@advance1.com](mailto:dan1@advance1.com)

[www.advancerealty.net](http://www.advancerealty.net)

**LOCATION**  
**4500 Hugh Howell**  
**Tucker GA 30084**



**Dan Decraene**  
Advance Realty Service, Inc.  
770-220-2626

[dan1@advance1.com](mailto:dan1@advance1.com)

[www.advancerealty.net](http://www.advancerealty.net)

Information contained herein has been obtained from the owner of the property or other sources we deem reliable. We have no reason to doubt its accuracy, but we do not guarantee it.