

# 335 & 339 RIVER RD., WILLINGTON, CT

## Two Commercial Parcels For Sale

#335 & #339

2.12 Acres

\$475,000

#335

1.14 Acres

\$298,000

#339

0.98 Acre

\$198,500

#339  
0.98  
Acre

#335  
1.14  
Acre

DUNKIN  
DONUTS

Willington Pizza Too

# LYMAN

REAL ESTATE BROKERAGE & DEVELOPMENT  
[www.LymanRE.com](http://www.LymanRE.com)

**RON LYMAN**

Main Office:

1160 Boston Post Rd.

Westbrook, CT 06498

Mailing Address:

73 Second Ave.

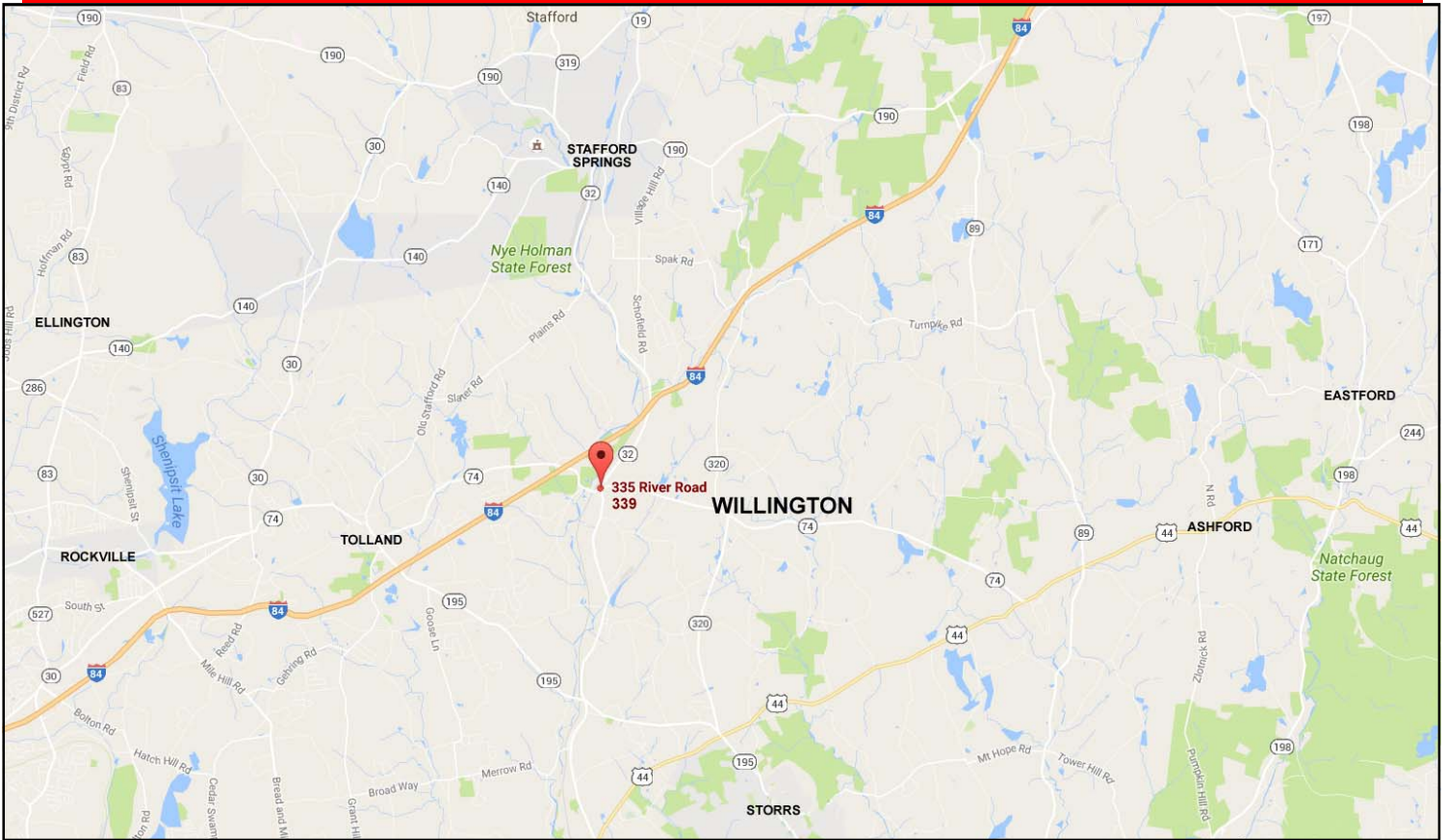
Westbrook, CT 06498

860-887-5000 x1 Office

860-884-4666 Cell

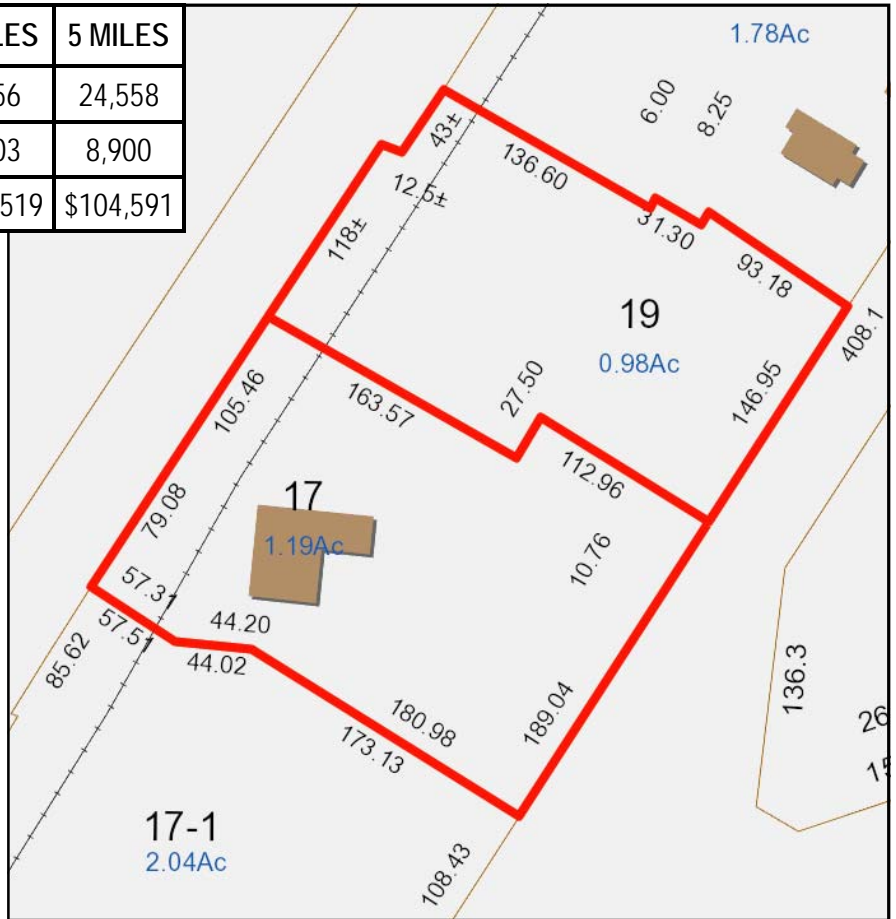
[ronl@lymanre.com](mailto:ronl@lymanre.com)





Demographics	1 MILE	3 MILES	5 MILES
Total Population	401	8,056	24,558
Total Households	163	3,003	8,900
Average Household Income	\$109,019	\$112,519	\$104,591

- ⇒ **Public Water & Sewer**
- ⇒ **Frontage: 336 Ft.**
- ⇒ **Zone: DC - Designed Commercial**
- ⇒ **Traffic Count: 7,000**
- ⇒ **Exit 69 off I-84**
- ⇒ **At the Intersection of Routes 32 & 74**



All information stated is from sources deemed reliable and is submitted subject to errors, omission, changes of other terms and conditions, prior sales, financing or withdrawal without notice. Buyer/Tenant agents will be eligible for a portion of commission only if they have an existing signed representation.