

Westbrook

CORPORATE CENTER

ONE PLACE. EVERYTHING.

CBRE

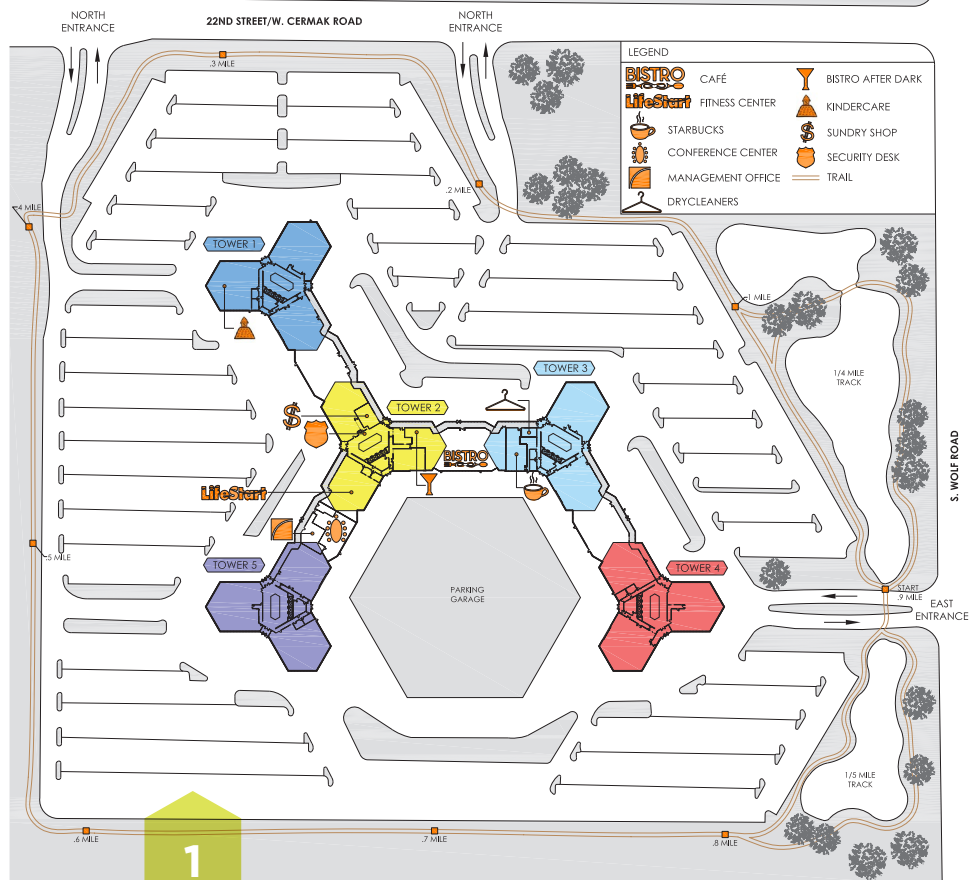


WESTBROOK CORPORATE CENTER HAS **EVERYTHING** IN ONE PLACE

Being the largest office complex in the East-West Corridor, comprised of 1.15 million SF, Westbrook has everything in one place.

With **unparalleled amenities, flexible space, and convenient commutes** you never need to leave.

COMPLEX VIEW



UNPARALLELED AMENITIES

Westbrook is much more than office space, with state of the art amenities it is an environment dedicated to your experience.

BEYOND OFFICE SPACE



The Bistro
& Bistro After Dark



Fully-Equipped
Fitness Center



Starbucks
Coffee



Conference
Facilities



EVERYTHING YOU NEED, ON-SITE



Daycare



Security



Management



ATM



Dry Cleaning



Shoe Repair



OUTSTANDING AREA



Walking/Biking
Paths



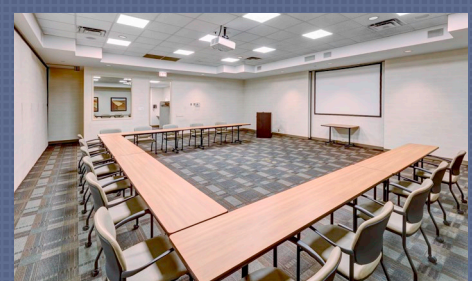
Nearby Golf Courses
include Butler National,
Chicago Highlands, &
Oak Brook Golf Club



Prominent
Signage
Opportunities



Proximity to Oak
Brook mall, shopping,
dining, hotels &
business services





CONVENIENT COMMUTES



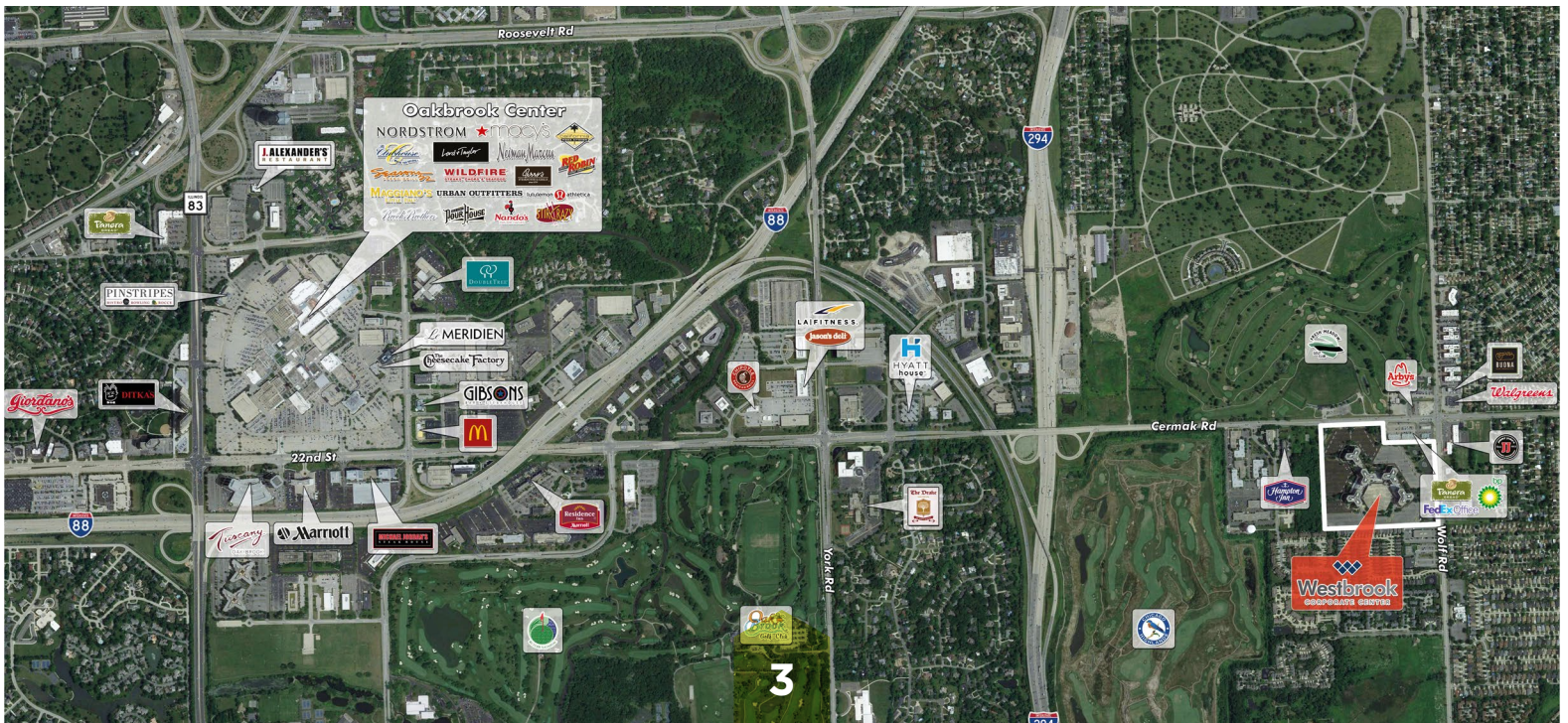
Westbrook is a suburban campus with a city
vibe and immediate access to accommodate
all of your commuting needs.



TRANSPORTATION MAP



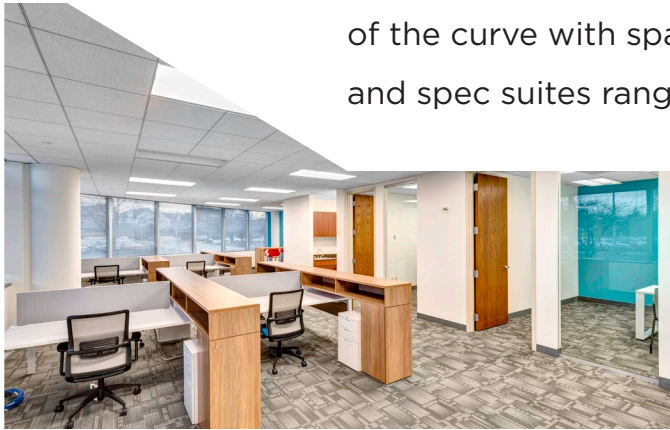
AMENITIES MAP



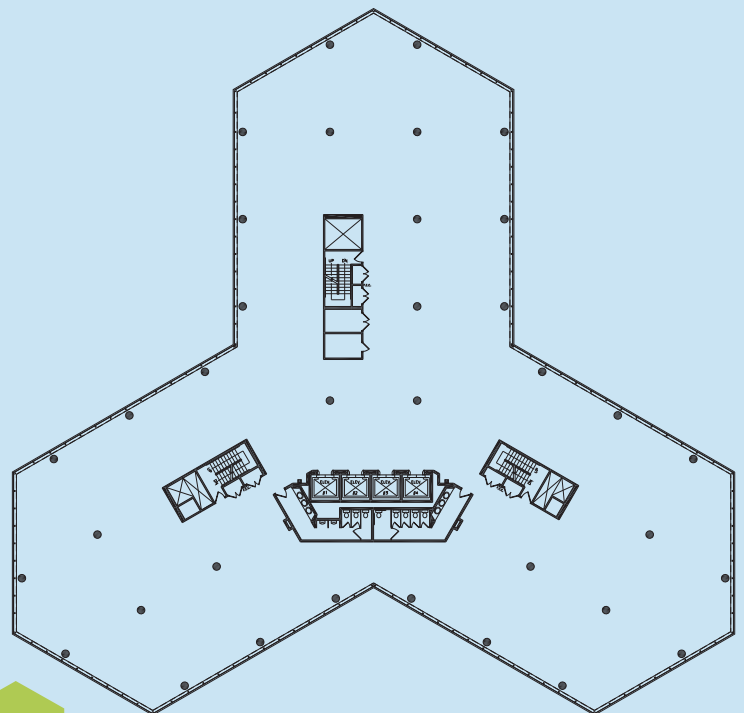


FLEXIBLE SPACE

Today's workplace is always on the move and Westbrook is ahead of the curve with spaces available between 2,000 - 40,000 SF and spec suites ranging from 2,000 - 8,000 SF.



TYPICAL FLOOR PLAN





Westbrook

CORPORATE CENTER

LEASING CONTACTS:

JOSH ROBBINS

First Vice President

+1 630 573 7821

josh.robbs@cbre.com

PETE ADAMO

Senior Vice President

+1 630 573 7053

peter.adamo@cbre.com

TARA TORBIK

Associate

+1 630 573 7822

tara.torbik@cbre.com

