

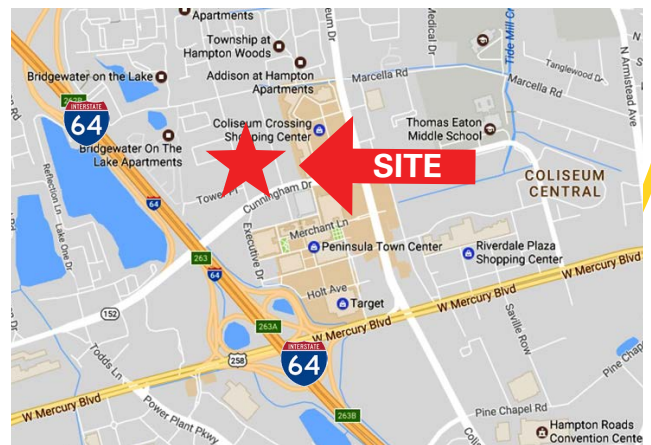
# FOR LEASE

## PROFESSIONAL OFFICE

### 2107 Hartford Road, Hampton, VA



- Suite A: 2,366 SF Available
- Excellent Condition
- Up To 8 Offices
- Immediate Occupancy
- Ample Parking
- \$11.50 PSF Rental Rate, Excluding Janitorial



CONTACT:

**PETER ABRAHAM, CCIM**  
**(757) 640-8226**  
[peterabraham@harveylindsay.com](mailto:peterabraham@harveylindsay.com)

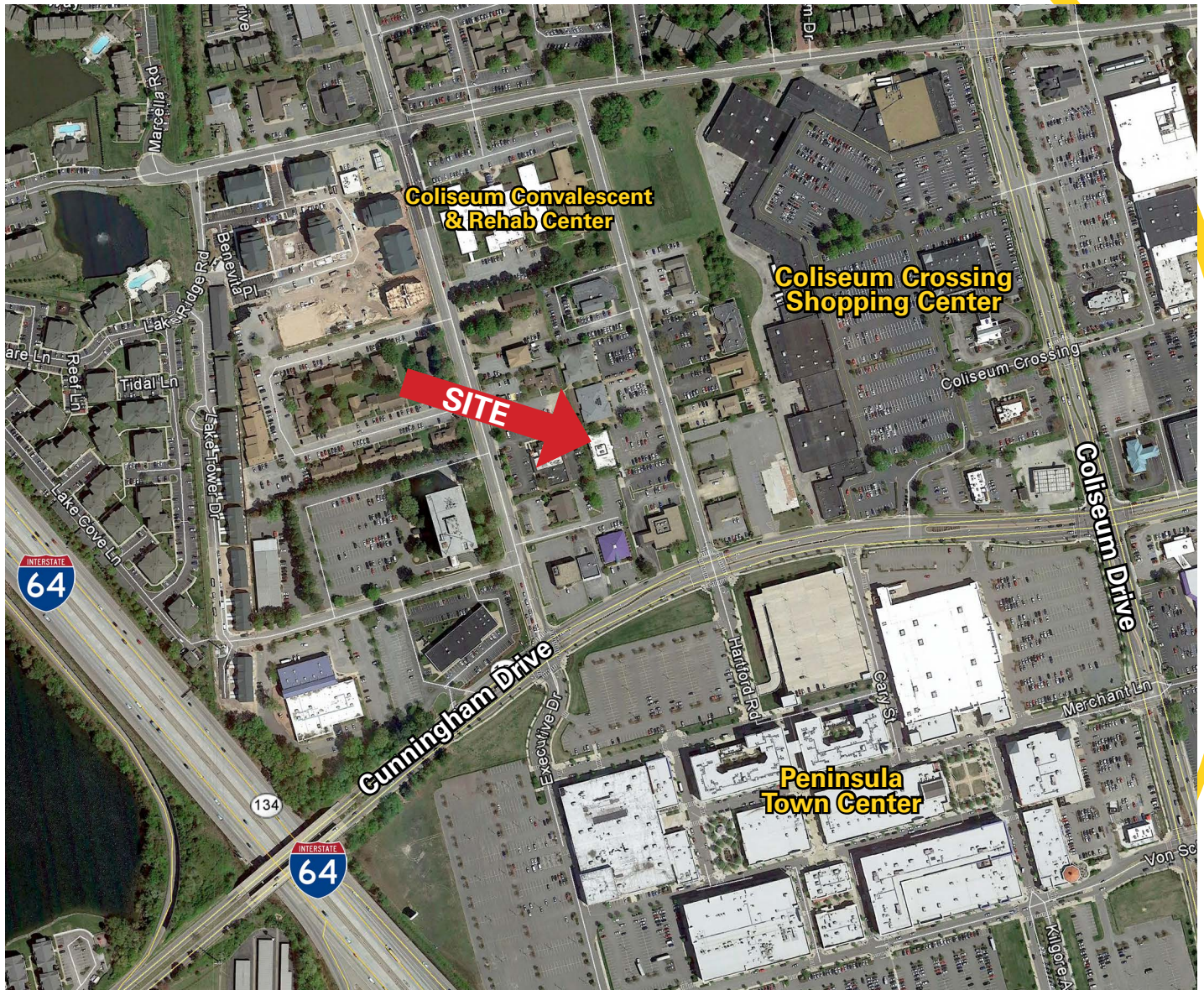
**HARVEY LINDSAY**  
COMMERCIAL REAL ESTATE

*A Tradition of Forward Thinking*

# FOR LEASE

## PROFESSIONAL OFFICE

### 2107 Hartford Road, Hampton, VA



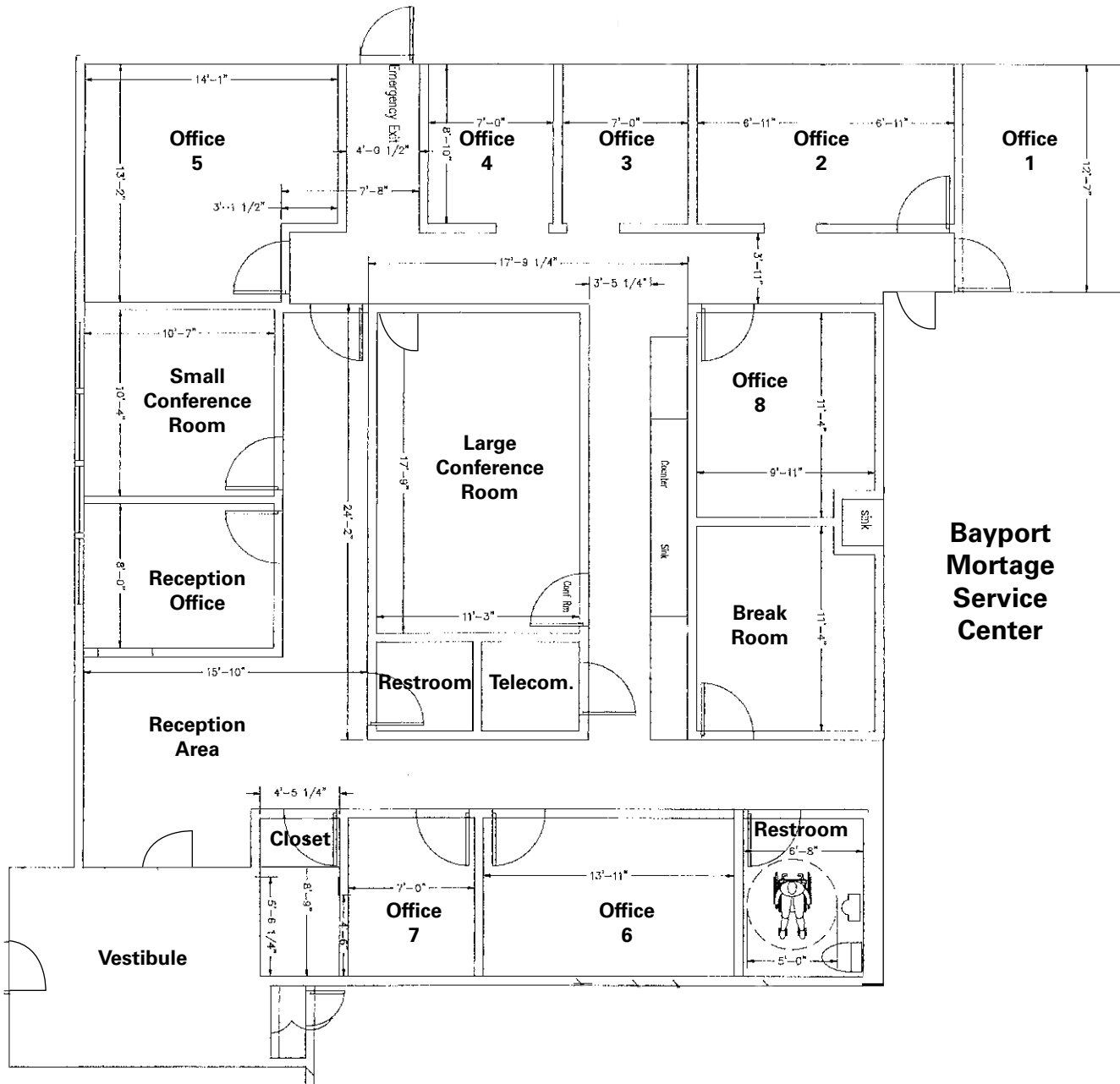
CONTACT:

**PETER ABRAHAM, CCIM**  
**(757) 640-8226**  
peterabraham@harveylindsay.com

**HARVEY LINDSAY**  
COMMERCIAL REAL ESTATE  
*A Tradition of Forward Thinking*

The information contained herein has been obtained from sources believed to be reliable but is not warranted.  
We cannot be responsible for errors, omissions, withdrawal, or prior lease or sale.

**PROFESSIONAL OFFICE FOR LEASE - 2107 Hartford Road, Hampton, VA**



**Bayport  
Mortgage  
Service  
Center**

**CONTACT:**

**PETER ABRAHAM, CCIM**

**(757) 640-8226**

**peterabraham@harveylindsay.com**

**HARVEY LINDSAY**

COMMERCIAL REAL ESTATE

*A Tradition of Forward Thinking*

The information contained herein has been obtained from sources believed to be reliable but is not warranted.

We cannot be responsible for errors, omissions, withdrawal, or prior lease or sale.