

FOR LEASE

4001

QUINCY CORNER
N FAIRFAX DR

AVAILABILITIES

SPACE

1st Floor

2nd Floor

3rd Floor

SIZE

7,919 SF

25,770 SF

26,751 SF

AMENITIES

- Fitness Center
- Deli
- Restaurant
- Walkable Amenities
- Metro Accessible

BALLSTON-MU STATION

.2 miles | 5 minute walk

VIRGINIA SQUARE STATION

.3 miles | 6 minute walk



Newmark
Knight Frank

ANDY KLAFF
ED CLARK
JEFF TARAE
WES EVANS

703.918.0211
202.312.5794
703.918.0205
202.312.5753

ANDY.KLAFF@NGKF.COM
ECLARK@NGKF.COM
JEFF.TARAE@NGKF.COM
WEVANS@NGKF.COM

WALKABLE AMENITIES

ACCESSIBLE. AVAILABLE. ACCOMMODATING.



ANDY KLAFF
ED CLARK
JEFF TARAE
WES EVANS

703.918.0211
202.312.5794
703.918.0205
202.312.5753

ANDY.KLAFF@NGKF.COM
ECLARK@NGKF.COM
JEFF.TARAE@NGKF.COM
WEVANS@NGKF.COM

WALKABLE AMENITIES

ACCESSIBLE. AVAILABLE. ACCOMMODATING.



4 mins Ballston-MU Station



5 mins Starbucks



6 mins Sweetgreen



5 mins Uncle Julio's



2 mins Subway



2 mins A-Town Bar & Grill



5 mins Tropical Smoothie



2 mins I-66 and N Glebe Rd



2 mins Washington Blvd



5 mins Potbelly



9 mins Buffalo Wild Wings



8 mins Chipotle



5 mins Kapnos Taverna



10 mins Harris Teeter



Newmark
Knight Frank

ANDY KLAFF
ED CLARK
JEFF TARAE
WES EVANS

703.918.0211
202.312.5794
703.918.0205
202.312.5753

ANDY.KLAFF@NGKF.COM
ECLARK@NGKF.COM
JEFF.TARAE@NGKF.COM
WEVANS@NGKF.COM

WALKABLE AMENITIES

ACCESSIBLE. AVAILABLE. ACCOMMODATING.

4001 QUINCY CORNER N FAIRFAX DR



0.5 MILES



- 4 mins Ballston-MU Station
- 5 mins Starbucks
- 6 mins Sweetgreen
- 5 mins Uncle Julio's
- 2 mins Subway

- 2 mins A-Town Bar & Grill
- 5 mins Tropical Smoothie
- 2 mins I-66 and N Glebe Rd
- 2 mins Washington Blvd
- 5 mins Potbelly

- 9 mins Buffalo Wild Wings
- 8 mins Chipotle
- 5 mins Kapnos Taverna
- 10 mins Harris Teeter

OUTDOOR WORKSPACE

MAKE GREEN SPACE YOUR WORK SPACE.



4001
QUINCY CORNER
N FAIRFAX DR



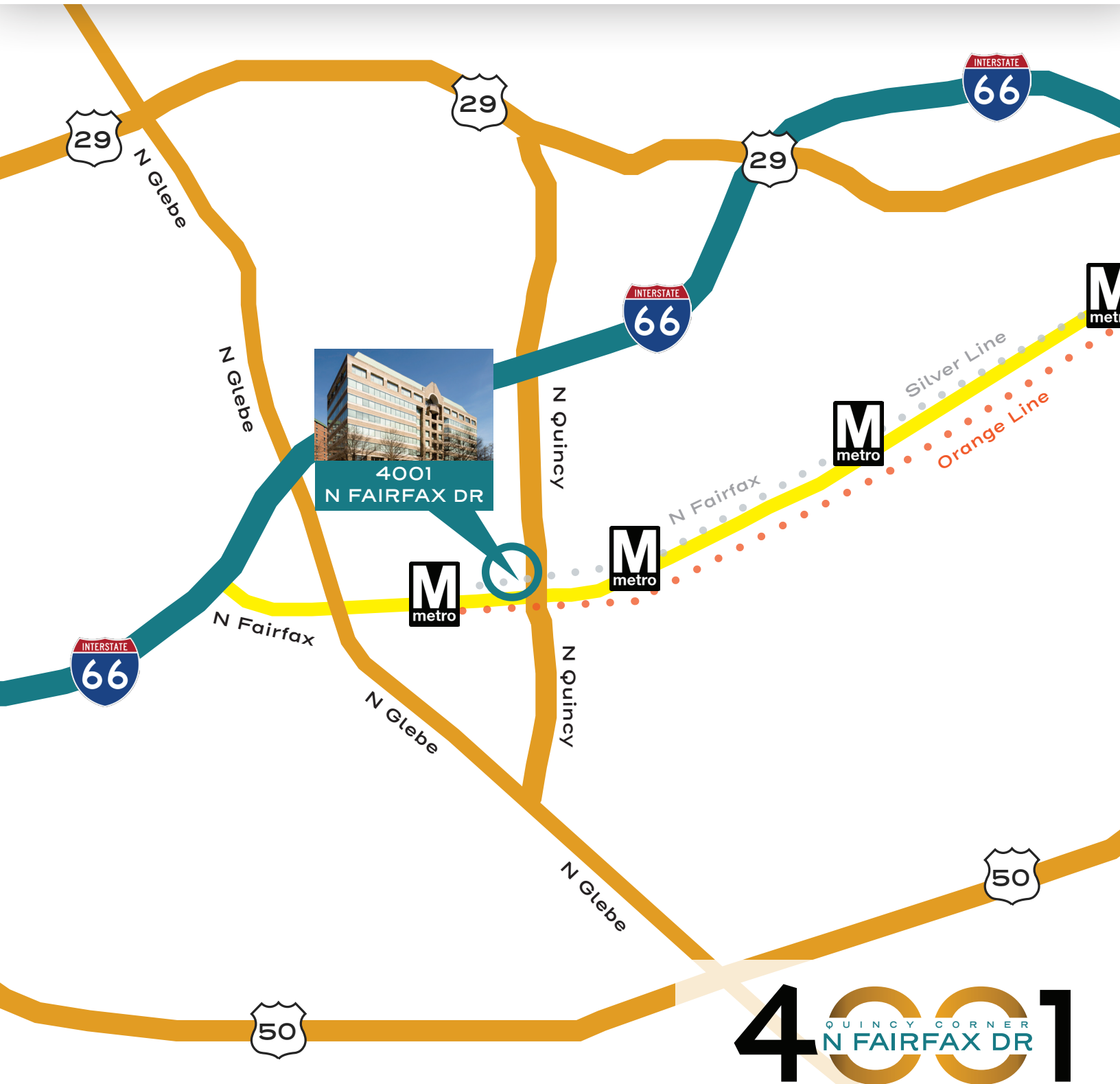
ANDY KLAFF
ED CLARK
JEFF TARAE
WES EVANS

703.918.0211
202.312.5794
703.918.0205
202.312.5753

ANDY.KLAFF@NGKF.COM
ECLARK@NGKF.COM
JEFF.TARAE@NGKF.COM
WEVANS@NGKF.COM

TRANSPORTATION ACCESSIBLE

CENTRALLY LOCATED WITHIN THE DC METRO REGION



ANDY KLAFF
ED CLARK
JEFF TARAE
WES EVANS

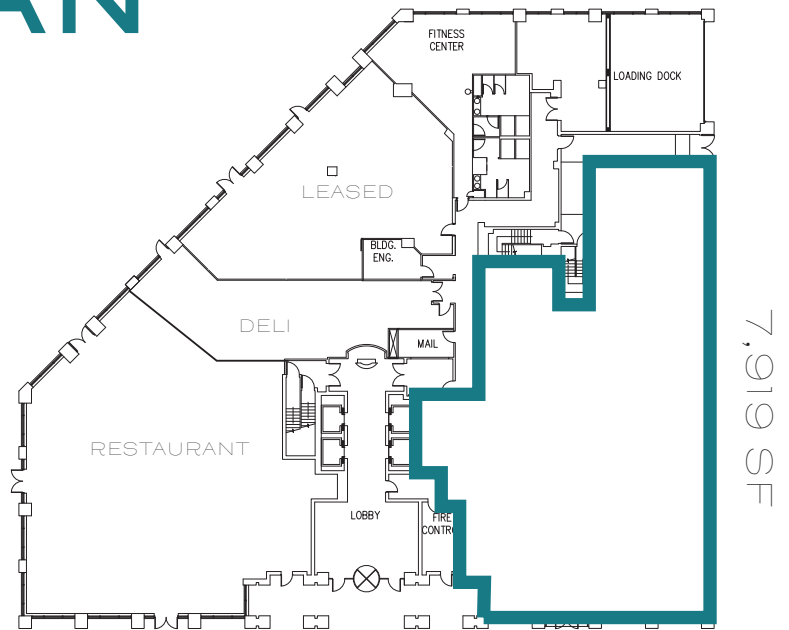
703.918.0211
202.312.5794
703.918.0205
202.312.5753

ANDY.KLAFF@NGKF.COM
ECLARK@NGKF.COM
JEFF.TARAE@NGKF.COM
WEVANS@NGKF.COM

FLOORPLAN LAYOUTS

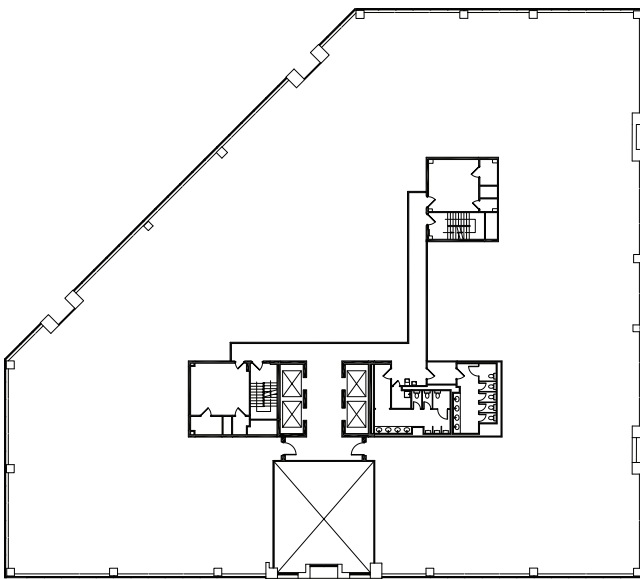
1ST FLOOR

SPACE	SIZE
1st Floor	7,919 SF
2nd Floor	25,770 SF
3rd Floor	26,751 SF



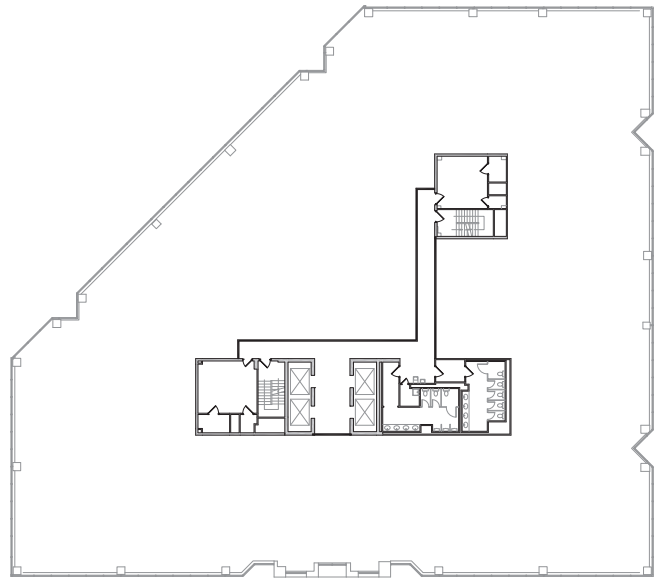
2ND FLOOR

25,770 SF



3RD FLOOR

26,751 SF



4001
QUINCY CORNER
N FAIRFAX DR