



VIEW ONLINE ▶

colliers.com/virginia

Harris Teeter

BENNETT'S CREEK CROSSING

Harris Teeter La Parrilla Dollar Tree Sylvan
 Pizza Hut ABC H&R Block
 The UPS Store UPS
 STATE FARM INSURANCE SUBWAY SUPERCUTS



Outparcel Shops at Bennett's Creek

Join Starbucks!

FOR LEASE | 3575 Bridge Road, Suffolk | Virginia

FEATURES

- Starbucks coming soon!
- Space in prominent outparcel shop ranging from 1,500 to 6,040 sf
- Located on Rt. 17 on Shoulders Hill Road, a commercial & residential growth corridor in the expanding North Suffolk Market
- Convenient access to I-664 & is in close proximity to daytime

- employers including Bon Secours Medical Center, Sentara Belle Harbour Medical, Lakeview Technology Center, The Virginia Modeling Analysis and Simulation Center, Lockheed Martin and Bridgeway Technology Center
- Inline tenants include Dollar Tree, Subway, Pizza Hut, Virginia ABC, Supercuts, The UPS Store & La Parrilla Mexican Grill among others

Natalie Hucke
 Senior Vice President
 +1 757 217 1882
 natalie.hucke@colliers.com

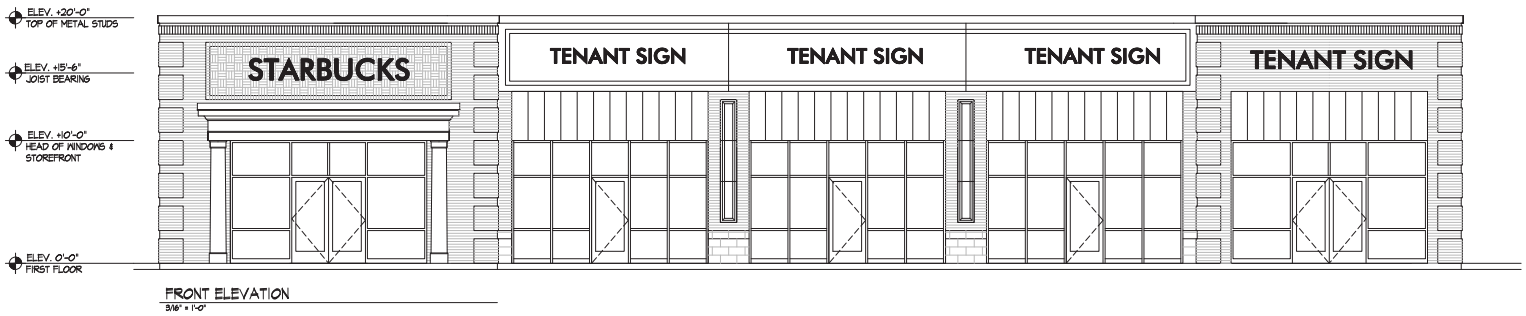
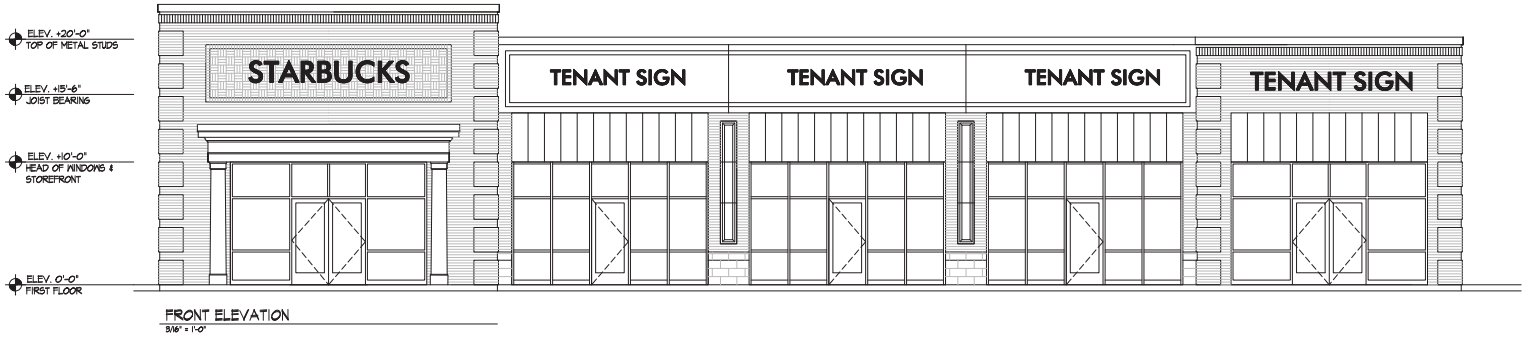
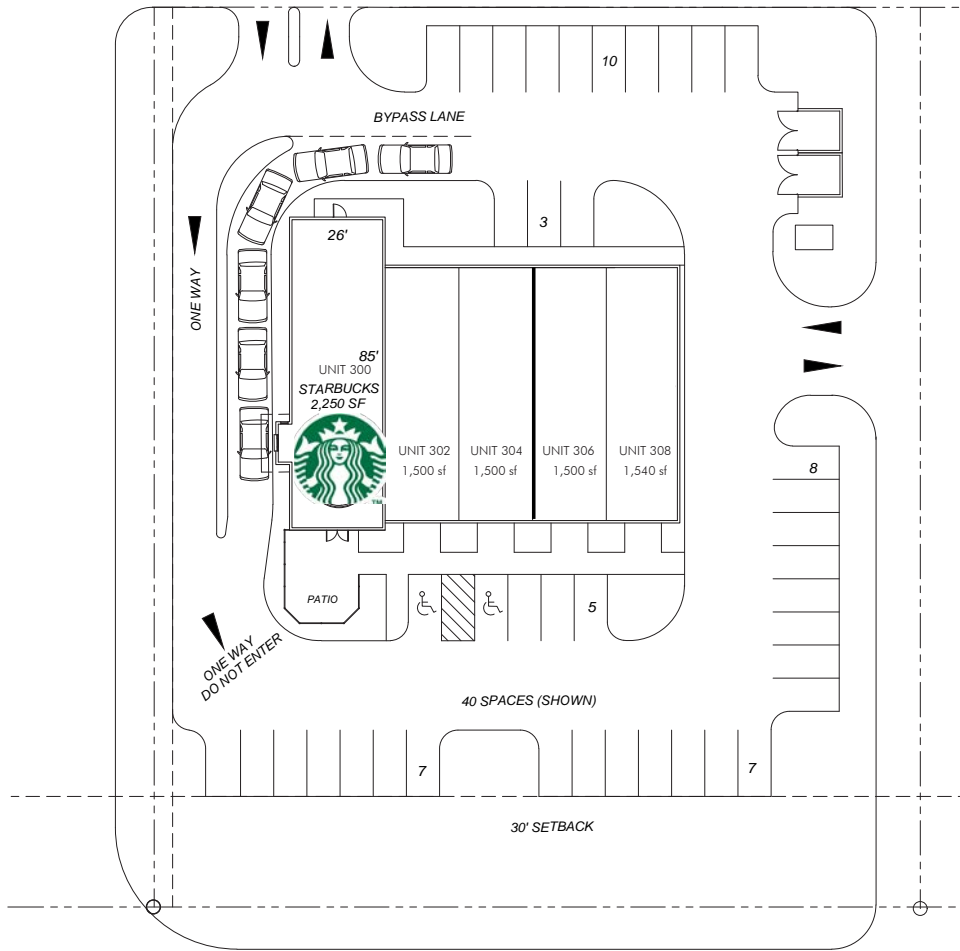
Kevin O'Keefe
 Senior Vice President
 +1 757 217 1885
 kevin.okeefe@colliers.com



Colliers International
 150 West Main St | Suite 1100
 Norfolk, VA 23510
 P: +1 757 490 3300
 F: +1 757 490 1200

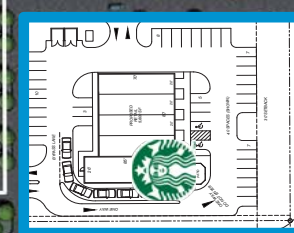
Accelerating success.

OUTPARCEL SHOPS - 8,920 SF TO BE BUILT



PHASE I - 109,794 SF SHOPPING CENTER

- | | | |
|--|---------------------------------------|----------------------------------|
| 1. 1,400 SF - AVAILABLE | 12. 1,400 SF - INSURANCE | 25. 1,400 SF - STATE FARM |
| 2. 1,400 SF - AVAILABLE | 13. 1,750 SF - SYLVAN LEARNING CENTER | 26. 1,400 SF - ADVANCED TACTICAL |
| 3. 1,400 SF - RIVER YOGA | 14. 1,050 SF - POPPY'S HOT DOGS | 27. 2,800 SF - THAI |
| 4. 1,400 SF - NURSING EDUCATION CENTER | 15. 1,400 SF - PIZZA | 28. ERAWAN |
| 5. 1,400 SF - NAIL SALON | 16. 1,400 SF - CHINESE RESTAURANT | 29. 2,800 SF - ABC STORE |
| 6a. 1,240 SF - AVAILABLE | 17. 2,800 SF - ANTHONY'S | 30. SALON & SPA |
| 6b. 3,957 SF - AVAILABLE | 18. SALON & SPA | 31. 1,400 SF - PIZZA HUT EXPRESS |
| 7. 1,400 SF - H&R BLOCK | 19. 3,060 SF - Enoch's Eye Care | 32. 4,200 SF - LA PARILLA |
| 8. 1,400 SF - THE UPS STORE | 20. 1,410 SF - AVAILABLE | 33. LA PARILLA |
| 9. 1,400 SF - SUPERCUTS | 21. 1,400 SF - Great Bottles | 34. LA PARILLA |
| 10. 58,000 SF - HARRIS TEETER | 22. 2,100 SF - JAPANESE STEAKHOUSE | |
| 11. 1,400 SF - SUBWAY | 23. STEAKHOUSE | |
| | 24. 2,100 SF - MICHELLE'S | |



PHASE II - 10,000 SF PLUS APPROX. 18,000 SF TO BE BUILT

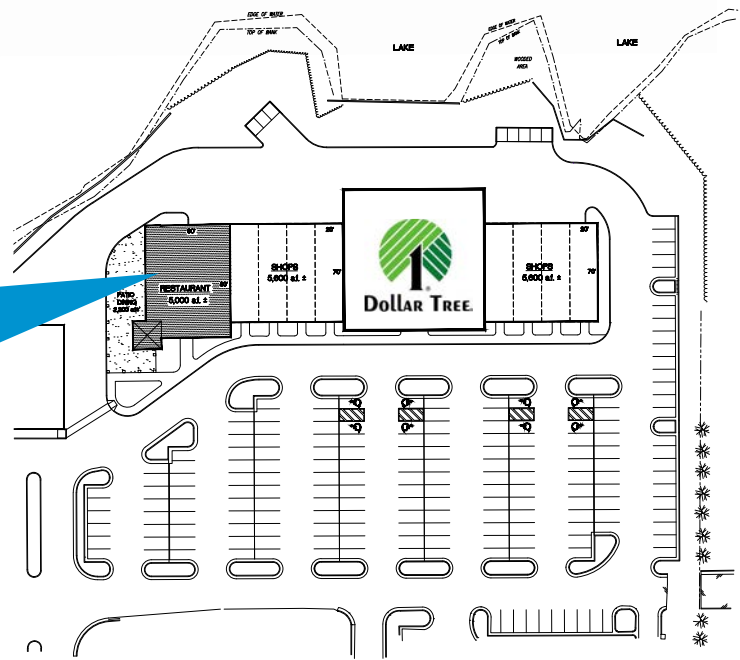


CONCEPTUAL ELEVATION FOR
BENNETT'S CREEK CROSSING
 STANTON PARTNER'S INC. / ROBINSON DEVELOPMENT GROUP
 Suffolk, VA July 19, 2013

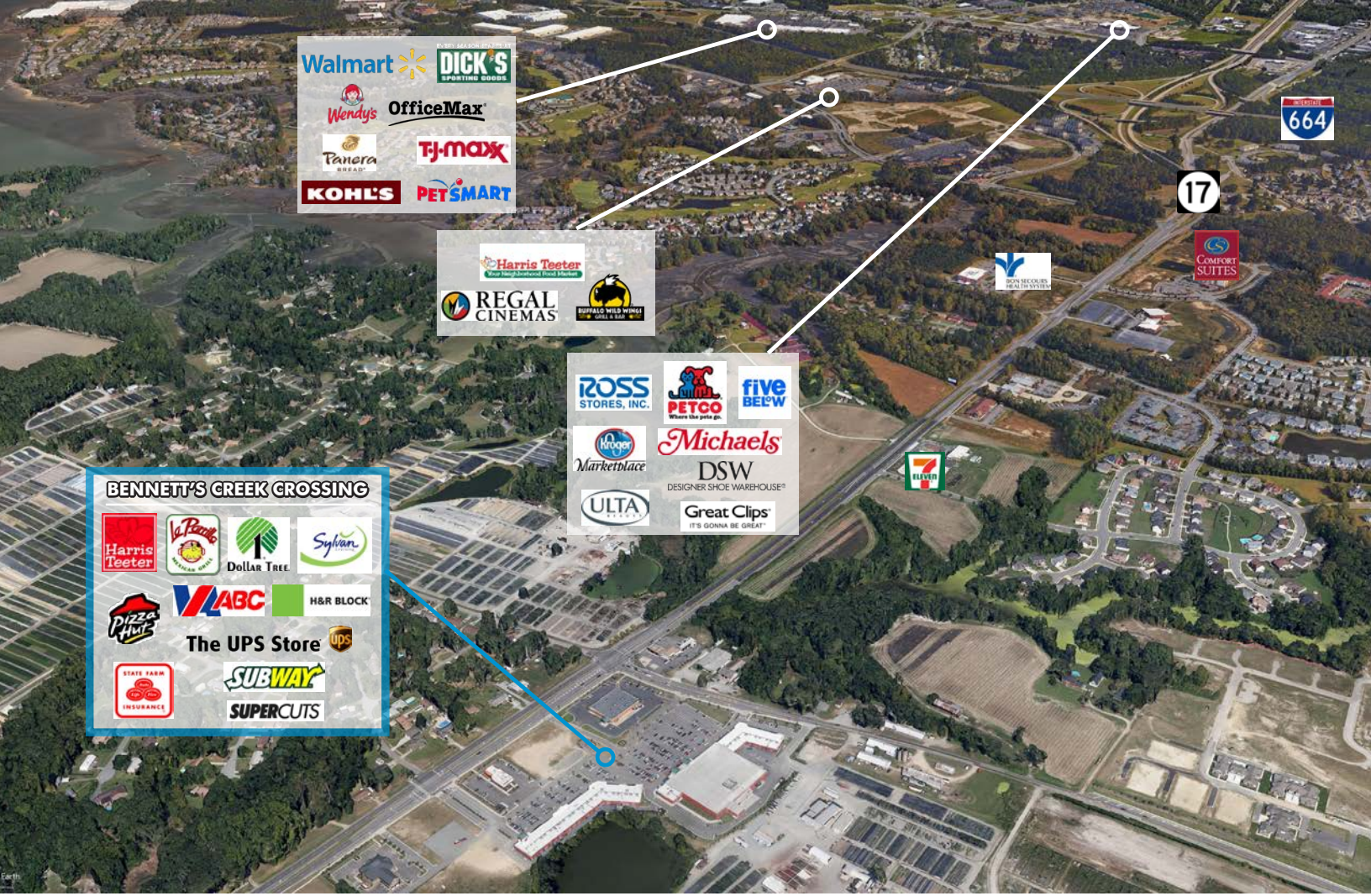


PHASE II

CONCEPTUAL DRAWING OF POTENTIAL RESTAURANT PATIO SEATING







BENNETT'S CREEK CROSSING



Natalie Hucke

Senior Vice President
 +1 757 217 1882
 natalie.hucke@colliers.com

Kevin O'Keefe

Senior Vice President
 +1 757 217 1885
 kevin.okeefe@colliers.com



Colliers International
 150 West Main St | Suite 1100
 Norfolk, VA 23510
 P: +1 757 490 3300
 F: +1 757 490 1200

This document has been prepared by Colliers International for advertising and general information only. Colliers International makes no guarantees, representations or warranties of any kind, expressed or implied, regarding the information including, but not limited to, warranties of content, accuracy and reliability. Any interested party should undertake their own inquiries as to the accuracy of the information. Colliers International excludes unequivocally all inferred or implied terms, conditions and warranties arising out of this document and excludes all liability for loss and damages arising there from. This publication is the copyrighted property of Colliers International and/or its licensor(s).
 ©2019. All rights reserved.