

138 WOOSTER

FOR MORE INFORMATION,
PLEASE CONTACT

Paul Popkin
Senior Managing Director
212.776.1213
ppopkin@lee-associates.com

Shmuel Goldman
Associate Director
212.776.1214
sgoldman@lee-associates.com

25 FEET

EAST BLOCK BETWEEN PRINCE AND
HOUSTON STREETS | SOHO | NEW YORK CITY

 **LEE &
ASSOCIATES**
COMMERCIAL REAL ESTATE SERVICES

RETAIL SPACE

Ground 2,400 SF
Basement 1,500 SF
Total 3,900 SF

POSSESSION

IMMEDIATE

ASKING RENT

**UPON
REQUEST**

TERM

LONG TERM

FRONTAGE

25 FEET

NEIGHBORS

Mansur Gavriel, Blu Dot, The North Face, Diane Von Furstenberg, Material Goods, FLOR, Lulu Lemon, Mackage, Barbour, Tibi, Fred Perry, The Mercer Hotel, Issey Miyake, Cole Haan

COMMENTS

- Close Proximity to Public Transportation
- Strong Co-tenants in SoHo.
- In the Heart of SoHo
- All Uses Considered



21.4 MILLION

Subway Riders Annually

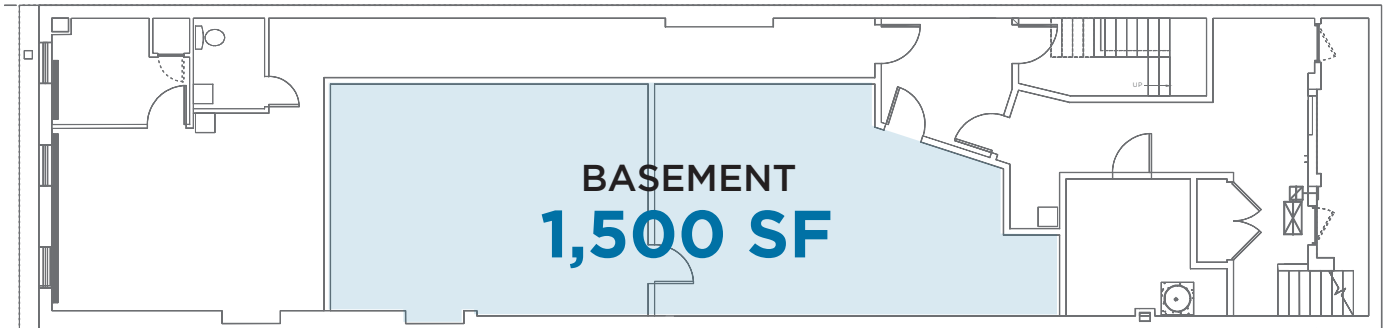
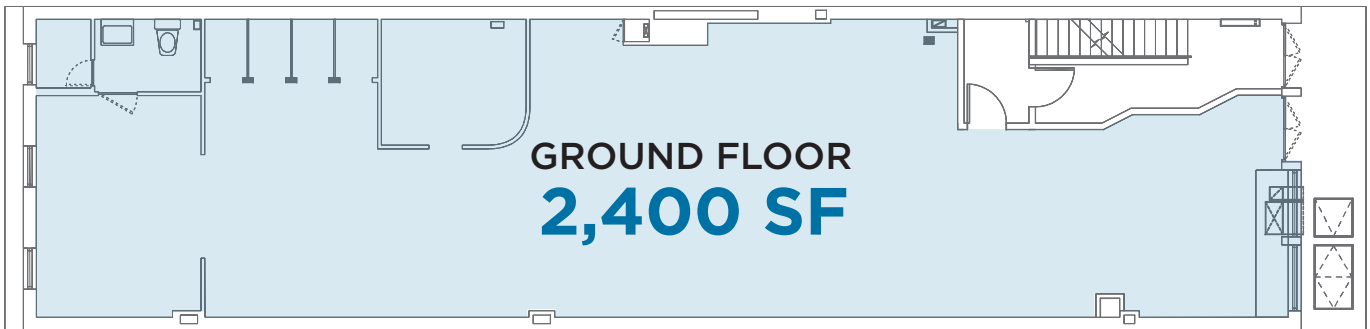


\$55 Million +

Spent on Apparel and Services Annually



FLOOR PLAN



*all square footages are approximate

NEIGHBORHOOD MAP

| | | |
|----------------------|-------------------------|-----------------------|
| | W HOUSTON ST. | |
| STARBUCKS | DOS CAMINOS | LIGNE ROSET |
| KEITO | ARI BOUTIQUE | CASSINA |
| HUGO FINE ARTS | CUTLER SALON | STEPEVI |
| SERAPHINE MATERNITY | SOHO WINE & SPIRITS | POLTRONA FRAU |
| GEORGES BERGÈS | AUTHENTIC PREOWNED | THE NORTH FACE |
| LEICA | MARTIN LAWRENCE GALLERY | DIANE VON FURSTENBERG |
| DTR MODERN GALLERY | THINK PINK | FRED PERRY |
| AVEDA | GIGGLE | LULULEMON MEN'S |
| G SHOCK | HALSTEAD PROPERTIES | |
| BENEFIT COSMETICS | THOMPSON CHEMISTS | |
| MIZZEN+MAIN | COACH | |
| SPORTSMAX - MAX MARA | | |

| | | |
|------------------|---------------------------|--------------|
| | PRINCE ST. | |
| CHOBANI YOGURT | FRENCH CONNECTION | COLE HAAN |
| AESOP | BIRCHBOX | WOOLRICH |
| HAPPY SOCKS | FRANKLIN BOWLES GALLERIES | BARBOUR |
| MOLESKIN | SCAVOLINI | ATHLETA |
| VILEBREQUIN | ALEX & ANI | TED BAKER |
| LA PERLA | SEE EYEWEAR | ROOM & BOARD |
| MAX STUDIO | CROWN GALLERY | CANADA GOOSE |
| M MISSONI | PETER LIK GALLERY | VICTORINOX |
| AVITTO | ELIE TAHARI | GEOX |
| MAUD FRIZON | M0851 | OSKLEN |
| PINKO | JAMALI GALLERY | CROCS |
| THE EIGHT SENSES | VERA BRADLEY | |
| TOUS | HERVE LEGER | |
| | SUNGLASS HUT | |

| | | |
|-------------------|----------------------|------------------|
| | SPRING ST. | |
| DSQUARED | MORGENTHAL FREDERICS | HUDSON FURNITURE |
| REPETTO | CURRENCY EXCHANGE | MOSCHINO |
| LADUREE | GROUND SUPPORT | SIMONE ROCHA |
| BONPOINT | EILEEN FISHER | CELINE |
| 7 FOR ALL MANKIND | REISS LONDON | SELIMA OPTIQUE |
| UPTON BELTS | FREE PEOPLE | |
| ERNO LASZIO | RRL & CO. | |
| BOGNER | PARIS STATIONS SOHO | |
| HARRY CIPRIANI'S | SOHO GEM | |
| FINOLLO | BADICHI BELTS | |

| | | |
|------------------|-------------------------------|-------------------|
| | BROOME ST. | |
| OLIVER PEOPLES | KENN'S BROOME ST. BAR & GRILL | LILIT ECLETIQUES |
| | CUPPING ROOM CAFE | LASVIT |
| AMAZON | WHAT COME AROUND GOES AROUND | BUSCEMI |
| | MARIE LOU D SALON | ION SALON |
| | KRISTEN FARELL | JJ EYELASHES |
| | SANCTUARY T | MIGUEL ANTOINNE |
| RESTAURANT FELIX | TOWN | DRAWING CENTER |
| | | PERFORMING GARAGE |

GRAND STREET

| | | |
|--------------------------|--------------------|----------------------|
| | 138 WOOSTER | |
| BULTHAUP | | CHRISTIAN DIOR MEN'S |
| CAPPELLINI | | |
| LUXURY CONDO DEVELOPMENT | | |
| FLOR | | KELLEY & PING |
| BLU DOT | | KISAN INC |
| MANSUR GAVRIEL | | WARBY PARKER |
| LULULEMON'S WOMEN'S | | PROENZA SCHOULER |
| | | RALPH LAUREN |

| | | |
|-------------------------|-----------------------|----------------|
| | WOOSTER STREET | |
| ISSEY MIYAKE | NARS | CAMPER |
| DREAMS ON AIR | WOLFORD | AG JEANS |
| TIBI | NIXON | JIMMY CHOO |
| M. GEMI | SAJE | LINDA FARROW |
| RAY BAN | INCOTEX | TASCHEN |
| JOIE | DAVID YURMAN | CHRISTIAN DIOR |
| THE LEESA DREAM GALLERY | | SONOS |
| EQUIPMENT | | FENDI |
| DOOB-3D | | TIFFANY & CO. |
| TIFFANY & CO | | HERNO |
| ICEBREAKER MERINO | | CHLOE |
| BALMAIN | | A BATHING APE |
| CHANEL | | ETRO |

| | | |
|--|------------------|------------------|
| | ILORI | |
| | MULBERRY | J. LINDBERG |
| | LONGCHAMP | PURE LEAF |
| | VOSGES CHOCOLATE | NICOLE MILLER |
| | MOLTON BROWN | VERSUS |
| | | O.N.S. |
| | | BURTON |
| | | ETIENNE AIGNER |
| | | HALSTON HERITAGE |
| | | JEFFREY RUDES |
| | | DR SMOOD |
| | | EDEN GALLERY |

| | | |
|--|----------------------|---------------|
| | PAS DE CALAIS | |
| | | ISABEL MARANT |
| | | A.L.C. |
| | | FRAME DENIM |
| | | THEORY |
| | | FONTANA ARTE |
| | | STONE ISLAND |
| | | KARTELL |
| | | ACNE STUDIOS |

FOR MORE INFORMATION:

Paul Popkin

Senior Managing Director

212.776.1213

ppopkin@lee-associates.com

Shmuel Goldman

Associate Director

212.776.1214

sgoldman@lee-associates.com



All information supplied is from sources deemed reliable and is furnished subject to errors, omissions, modifications, removal of the listing for sale or lease, and to any listing conditions, including the rates and manner of payment of commissions for particular offerings imposed by principals or agreed by this Company, the terms of which are available to principals or duly licensed brokers. Any square footage dimensions set forth are approximate.