

# FAIRWAY BUSINESS CENTER

## 9445 Fairway View Place

Rancho Cucamonga, CA



OFFICE FOR LEASE

### BUILDING SUMMARY

AVAILABILITY Up to ±31,145 SF

RENTAL RATE \$2.05 FSG

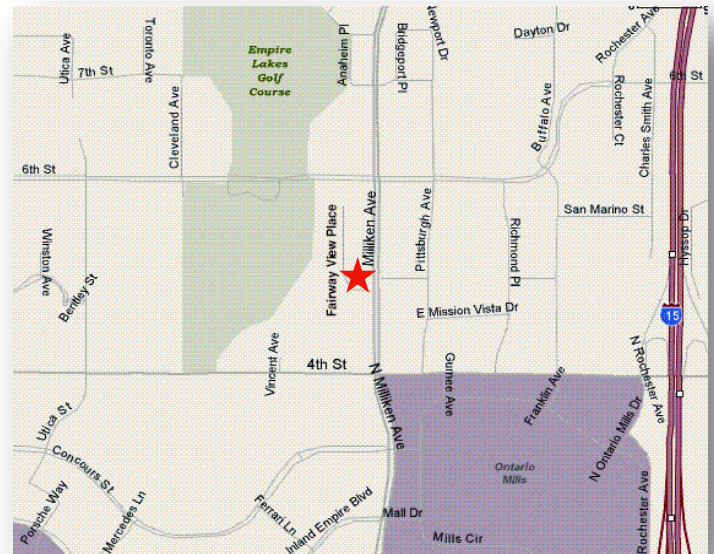
PARKING 4:1000

STORIES 2

### BUILDING FEATURES

- Milliken Avenue Frontage & Visibility
- Immediate access to Ontario International Airport, I-10, 1-15, & 60 Freeways
- Close proximity to Retail and Hospitality

### LOCATOR MAP



#### FOR MORE INFORMATION, PLEASE CONTACT:

**Newmark  
Knight Frank**

**Drew Sanden**  
Senior Managing Director  
(909) 974.4068  
[drew.sanden@ngkf.com](mailto:drew.sanden@ngkf.com)  
CA RE License #01802318

**Taylor Ing**  
Senior Managing Director  
(909) 974.4061  
[Taylor.ing@ngkf.com](mailto:Taylor.ing@ngkf.com)  
CA RE License #00895164

**Scott Maples**  
Senior Associate  
(909) 974.4066  
[Scott.maples@ngkf.com](mailto:Scott.maples@ngkf.com)  
CA RE License #01941380

3281 E Guasti Rd, Suite 600  
Ontario, CA 91761  
CA License No: 01355491

[www.newmarkkf.com](http://www.newmarkkf.com)

Procuring broker shall only be entitled to a commission, calculated in accordance with the rates approved by our principal only if such procuring broker executes a brokerage agreement acceptable to us and our principal and the conditions as set forth in the brokerage agreement are fully and unconditionally satisfied. Although all information furnished regarding property for sale, rental, or financing is from sources deemed reliable, such information has not been verified and no express representation is made nor is any to be implied as to the accuracy thereof and it is submitted subject to errors, omissions, change of price, rental or other conditions, prior sale, lease or financing, or withdrawal without notice and to any special conditions imposed by our principal.

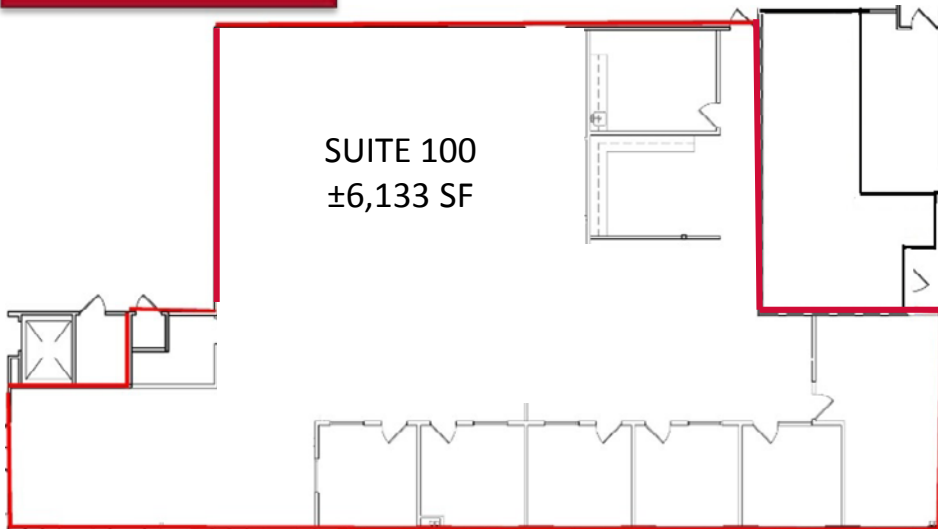
# FAIRWAY BUSINESS CENTER

## 9445 Fairway View Place

Rancho Cucamonga, CA



### FIRST FLOOR



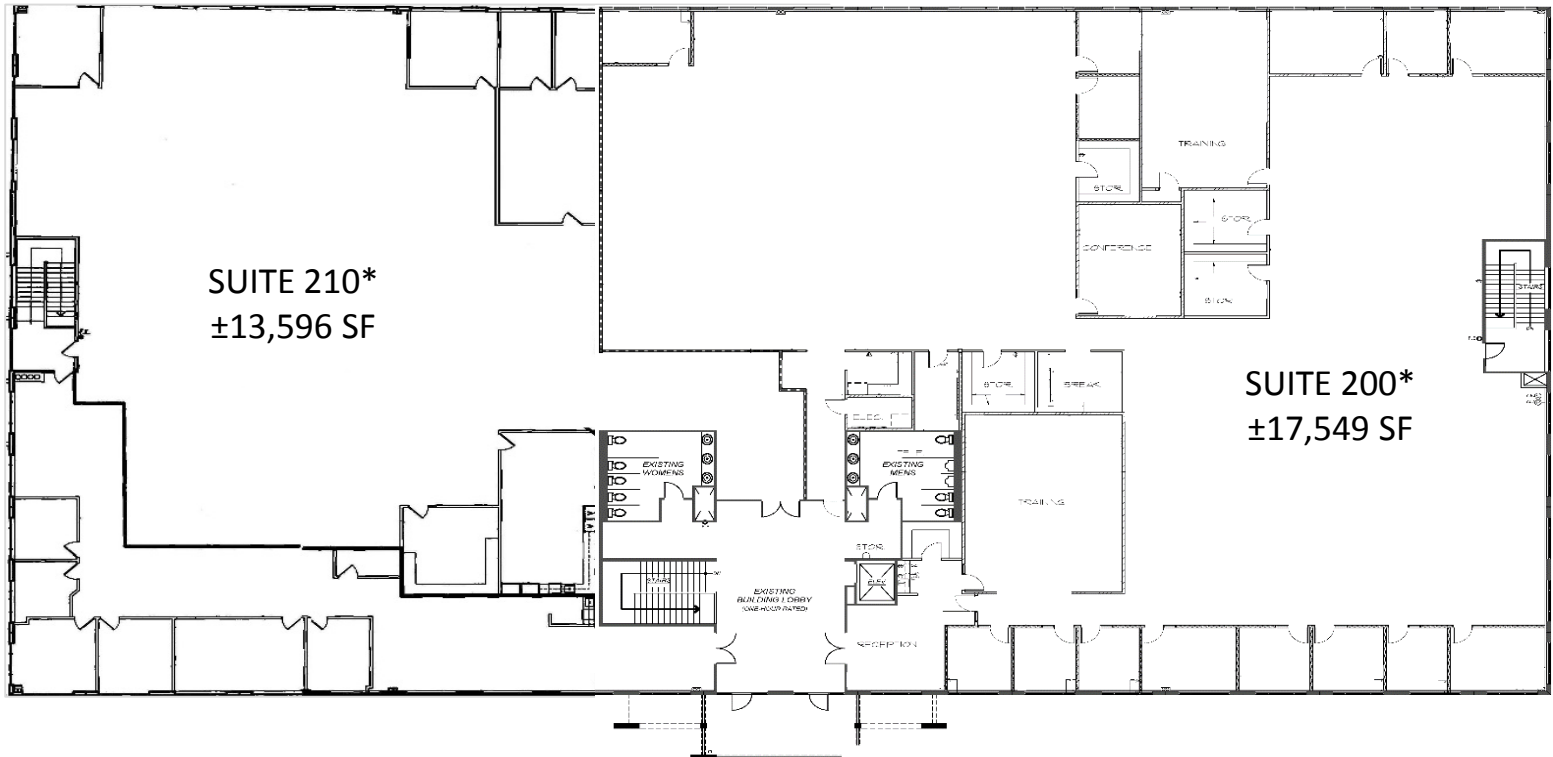
SUITE 100  
±6,133 SF

### Summary of Availability

Suite	Size (RSF)	Asking Rate	Available
100	±6,133	\$2.05	Immediately
200*	±17,549	\$2.05	4/1/2018
210*	±13,596	\$2.05	Immediately

\*Suite 200 & 210 are contiguous to ±31,145 RSF

### SECOND FLOOR



SUITE 210\*  
±13,596 SF

SUITE 200\*  
±17,549 SF

#### FOR MORE INFORMATION, PLEASE CONTACT:

**Newmark  
Knight Frank**

**Drew Sanden**  
Senior Managing Director  
(909) 974.4068  
[drew.sanden@ngkf.com](mailto:drew.sanden@ngkf.com)  
CA RE License #01802318

**Taylor Ing**  
Senior Managing Director  
(909) 974.4061  
[Taylor.ing@ngkf.com](mailto:Taylor.ing@ngkf.com)  
CA RE License #00895164

**Scott Maples**  
Senior Associate  
(909) 974.4066  
[Scott.maples@ngkf.com](mailto:Scott.maples@ngkf.com)  
CA RE License #01941380

3281 E Guasti Rd, Suite 600  
Ontario, CA 91761  
CA License No: 01355491

[www.newmarkkf.com](http://www.newmarkkf.com)

Procuring broker shall only be entitled to a commission, calculated in accordance with the rates approved by our principal only if such procuring broker executes a brokerage agreement acceptable to us and our principal and the conditions as set forth in the brokerage agreement are fully and unconditionally satisfied. Although all information furnished regarding property for sale, rental, or financing is from sources deemed reliable, such information has not been verified and no express representation is made nor is any to be implied as to the accuracy thereof and it is submitted subject to errors, omissions, change of price, rental or other conditions, prior sale, lease or financing, or withdrawal without notice and to any special conditions imposed by our principal.