

# 1633

BAYSHORE  
HIGHWAY

OFFICE SUITES AVAILABLE NOW



*For more information, please contact:*

**Gary Boitano**

Director  
+1 650 401 2122  
gary.boitano@cushwake.com  
LIC #01902693

**Chase Novak**

Senior Associate  
+1 650 401 2130  
chase.novak@cushwake.com  
LIC #01983661

**Tenny Tsai**

Managing Director  
+1 408 436 3671  
tenny.tsai@cushwake.com  
LIC #00966186

**Danny Yu**

Director  
+1 408 436 3655  
danny.yu@cushwake.com  
LIC #01114851





# 1633

BAYSHORE  
HIGHWAY

## PROPERTY HIGHLIGHTS

- On-Site Fitness Center with Showers and Lockers
- Community Kitchen and Mail Room
- On Site Property Management
- Immediate Access to Highway 101
- Walking Distance to Hotels
- 2 Miles from SFO
- Centrally Located to San Francisco, East Bay, Peninsula, and Silicon Valley
- Minutes to Millbrae Cal Train and Bart Station
- Close Distance to Restaurants and Amenities
- Direct Access to Waterfront Jogging Trails
- Ample Parking



## AVAILABLE SUITES



SUITE #	SF	NOTES
<b>Suite 136</b>	±1,435 SF	3 Privates, Conference Room, Open Office Space, Available 1/1/19
<b>Suite 331</b>	±2,380 SF	2 Privates, Conference Room, Balcony, Kitchenette, Storage Room, Open Office Space

*For more information, please contact:*

**Gary Boitano**

Director  
+1 650 401 2122  
gary.boitano@cushwake.com  
LIC #01902693

**Chase Novak**

Senior Associate  
+1 650 401 2130  
chase.novak@cushwake.com  
LIC #01983661

**Tenny Tsai**

Managing Director  
+1 408 436 3671  
tenny.tsai@cushwake.com  
LIC #00966186

**Danny Yu**

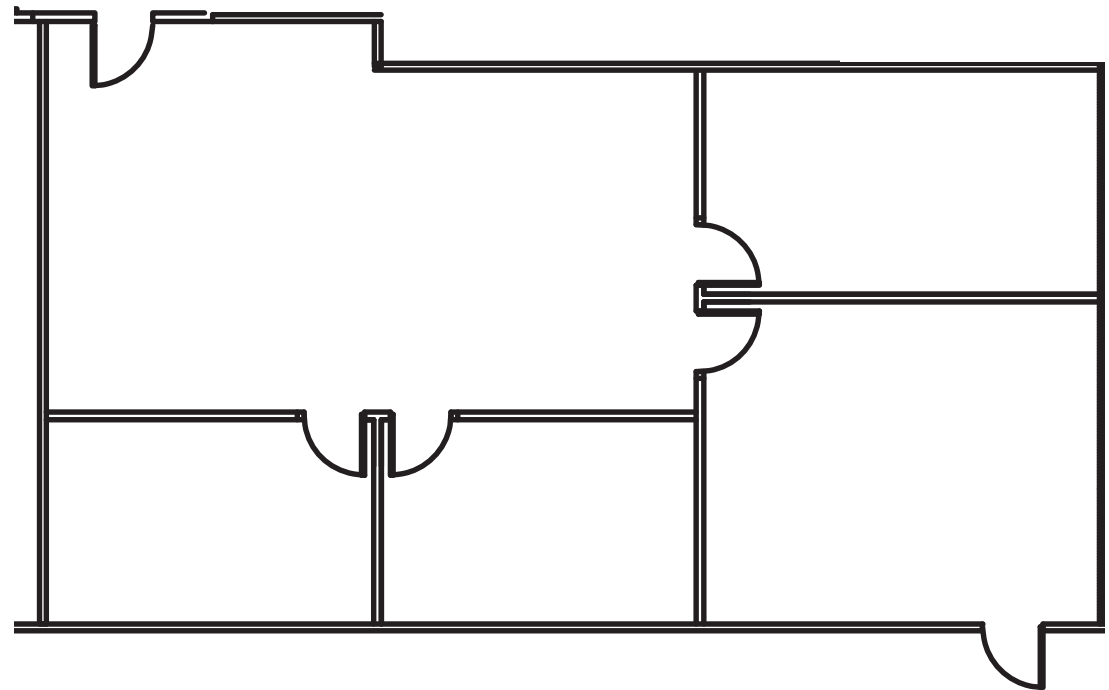
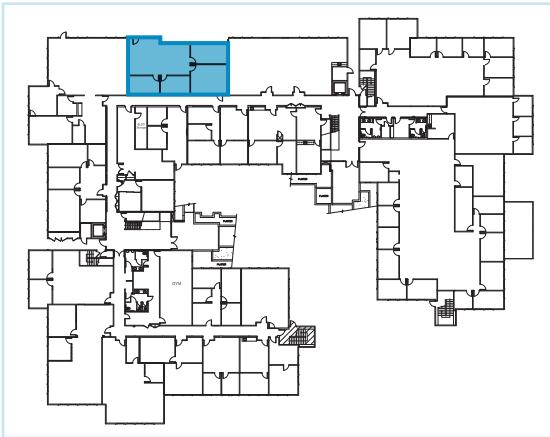
Director  
+1 408 436 3655  
danny.yu@cushwake.com  
LIC #01114851

## AVAILABLE SUITES

### SUITE 136

±1,435 SF

- 3 Privates
- Conference Room
- Open Office Space
- Available 1/1/19



*For more information, please contact:*

**Gary Boitano**

Director  
+1 650 401 2122  
gary.boitano@cushwake.com  
LIC #01902693

**Chase Novak**

Senior Associate  
+1 650 401 2130  
chase.novak@cushwake.com  
LIC #01983661

**Tenny Tsai**

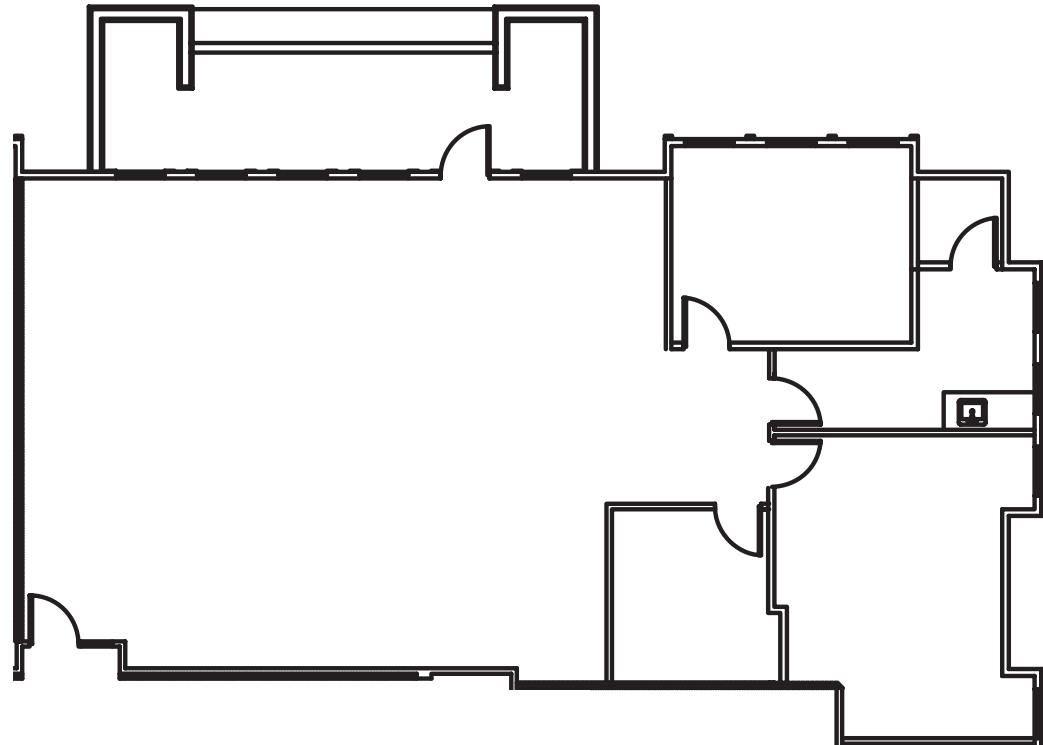
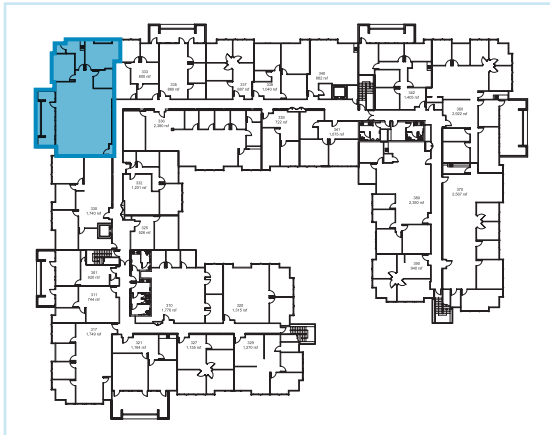
Managing Director  
+1 408 436 3671  
tenny.tsai@cushwake.com  
LIC #00966186

**Danny Yu**

Director  
+1 408 436 3655  
danny.yu@cushwake.com  
LIC #01114851

## AVAILABLE SUITES

SUITE 331	±2,380 SF
<ul style="list-style-type: none"> <li>• 2 Privates</li> <li>• Conference Room</li> <li>• Balcony</li> <li>• Kitchenette</li> <li>• Storage Room</li> <li>• Open Office Space</li> </ul>	



*For more information, please contact:*

**Gary Boitano**

Director  
+1 650 401 2122  
gary.boitano@cushwake.com  
LIC #01902693

**Chase Novak**

Senior Associate  
+1 650 401 2130  
chase.novak@cushwake.com  
LIC #01983661

**Tenny Tsai**

Managing Director  
+1 408 436 3671  
tenny.tsai@cushwake.com  
LIC #00966186

**Danny Yu**

Director  
+1 408 436 3655  
danny.yu@cushwake.com  
LIC #01114851

# 1633

## BAYSHORE HIGHWAY

## TRANSPORTATION

### CALTRAIN/BART SHUTTLE A.M.

Millbrae Station Pick-Up	1633 Old Bayshore Drop-Off
6:57 AM	7:10 AM
7:27 AM	7:40 AM
7:42 AM	7:55 AM
8:09 AM	8:22 AM
8:27 AM	8:40 AM
8:42 AM	8:55 AM
8:59 AM	9:12 AM
9:14 AM	9:27 AM

### CALTRAIN/BART SHUTTLE P.M.

1633 Old Bayshore Pick-Up	Millbrae Station Drop-Off
4:05 PM	4:19 PM
4:25 PM	4:39 PM
4:37 PM	4:51 PM
5:00 PM	5:14 PM
5:24 PM	5:38 PM
5:38 PM	5:52 PM
6:09 PM	6:23 PM
6:26 PM	6:40 PM
6:41 PM	6:55 PM

### SHUTTLE ROUTE



### CALTRAIN ROUTE



For more information, please contact:

#### Gary Boitano

Director  
+1 650 401 2122  
gary.boitano@cushwake.com  
LIC #01902693

#### Chase Novak

Senior Associate  
+1 650 401 2130  
chase.novak@cushwake.com  
LIC #01983661

#### Tenny Tsai

Managing Director  
+1 408 436 3671  
tenny.tsai@cushwake.com  
LIC #00966186

#### Danny Yu

Director  
+1 408 436 3655  
danny.yu@cushwake.com  
LIC #01114851





1	New England Lobster Market	11	I Love Sushi
2	King of Thai Noodle House	12	Max's Restaurant
3	Joe's Cafe by the Bay	13	Kincaid's Restaurant
4	Taylor's Bay Cafe	14	Waterfront Cafe
5	Elephant Bar	15	Fire Vine Grill & Bar
6	El Torito	16	Gabriel & Daniel's Mexican
7	Mr. Teriyaki	17	Knuckles Sports Bar
8	Benihana Burlingame	18	3 Sixty
9	Grand Harbor Seafood	19	Maverick Jack's
10	Aroma Cafe		

For more information, please contact:

**Gary Boitano**

Director  
+1 650 401 2122  
gary.boitano@cushwake.com  
LIC #01902693

**Chase Novak**

Senior Associate  
+1 650 401 2130  
chase.novak@cushwake.com  
LIC #01983661

**Tenny Tsai**

Managing Director  
+1 408 436 3671  
tenny.tsai@cushwake.com  
LIC #00966186

**Danny Yu**

Director  
+1 408 436 3655  
danny.yu@cushwake.com  
LIC #01114851





*For more information, please contact:*

**Gary Boitano**

Director  
+1 650 401 2122  
gary.boitano@cushwake.com  
LIC #01902693

**Chase Novak**

Senior Associate  
+1 650 401 2130  
chase.novak@cushwake.com  
LIC #01983661

**Tenny Tsai**

Managing Director  
+1 408 436 3671  
tenny.tsai@cushwake.com  
LIC #00966186

**Danny Yu**

Director  
+1 408 436 3655  
danny.yu@cushwake.com  
LIC #01114851



A photograph of a modern, multi-story building with a light-colored facade and large windows. The building features a prominent address marker with the number '1633' on a vertical post. The sky is clear blue, and the foreground shows a paved walkway and some landscaping. A large, stylized '1633' is overlaid on the image.

# 1633

BAYSHORE  
HIGHWAY



CUSHMAN &  
WAKEFIELD