



OFFICE/WAREHOUSE SPACE FOR LEASE IN NORTHWEST MARKET

CLAY CROSSING BUSINESS CENTER

4333 W. SAM HOUSTON PKWY N. | SUITE 120 | HOUSTON, TEXAS 77043

CONTACT INFORMATION

DARRYL NOON

713.270.3325

darryl.noon@transwestern.com

JUDE FILIPPONE

713.270.3318

jude.filippone@transwestern.com

BRIAN GAMMILL

713.270.3321

brian.gammill@transwestern.com



OFFICE/WAREHOUSE SPACE FOR LEASE IN NORTHWEST MARKET

CLAY CROSSING BUSINESS CENTER

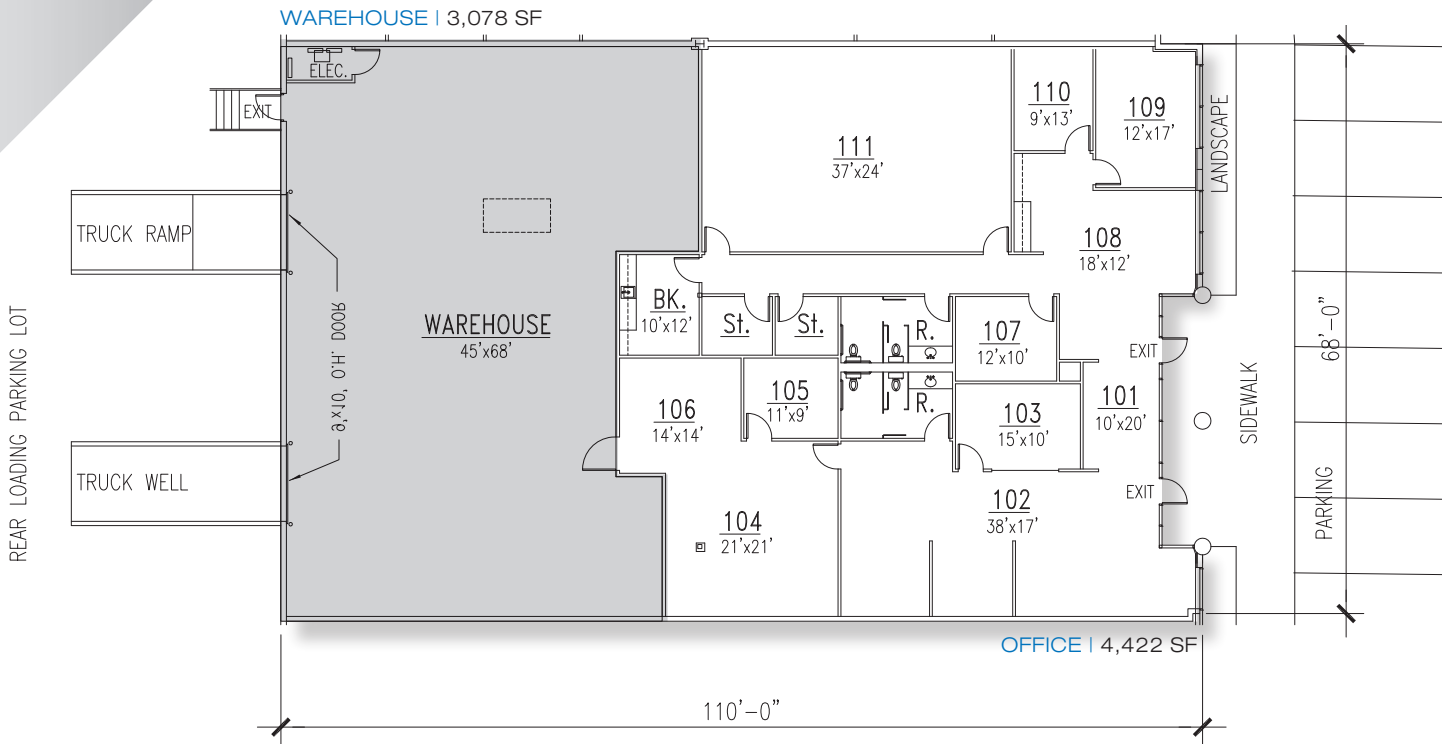
4333 W. SAM HOUSTON PKWY N. | SUITE 120 | HOUSTON, TEXAS 77043



1900 West Loop South
Suite 1300
Houston, Texas 77027

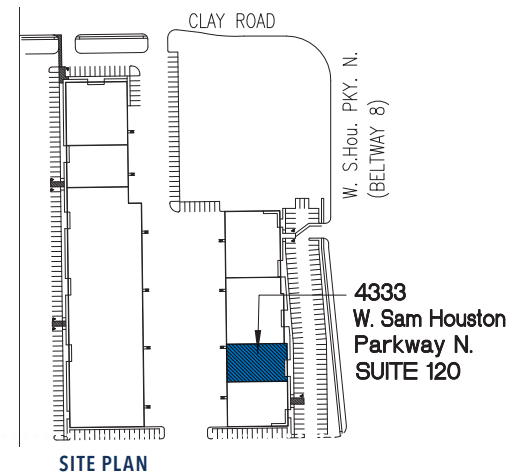
FLOOR PLAN

SUITE 120: 7,500 SF



BUILDING SPECS

- Master planned environment
- Outstanding visibility and corporate identity
- Excellent accessibility
- Semi dock high / Rear load
- Tilt-up concrete construction
- 16' Average clear height
- Fully fire sprinkler
- All concrete paving
- Professionally maintained landscaping
- 24/7 Access
- Abundant parking
- Truck ramp and well access



CONTACT INFORMATION

DARRYL NOON

713.270.3325

darryl.noon@transwestern.com

JUDE FILIPPONE

713.270.3318

jude.filippone@transwestern.com

BRIAN GAMMILL

713.270.3321

brian.gammill@transwestern.com

OFFICE/WAREHOUSE SPACE FOR LEASE IN NORTHWEST MARKET
CLAY CROSSING BUSINESS CENTER

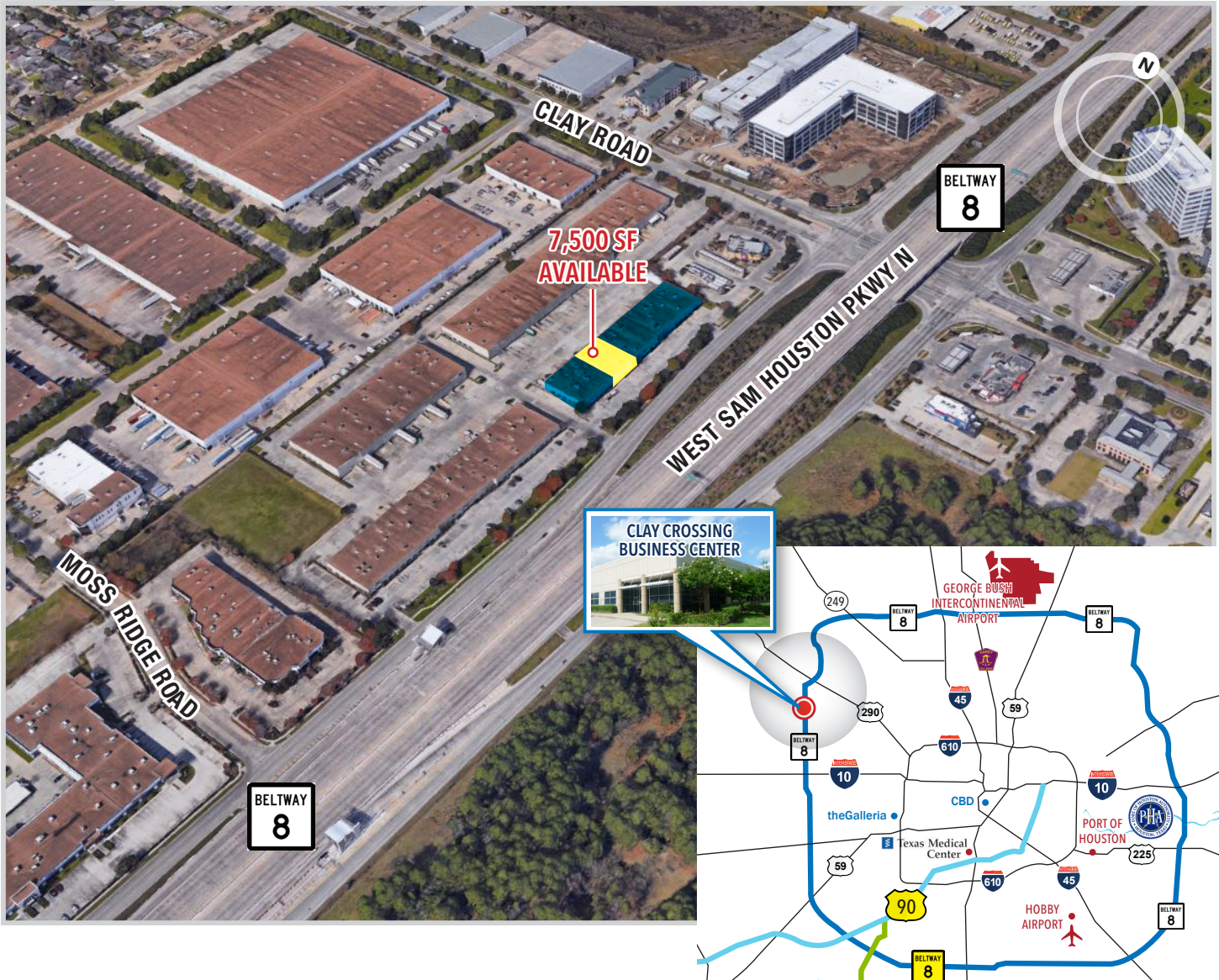
4333 W. SAM HOUSTON PKWY N. | SUITE 120 | HOUSTON, TEXAS 77043



1900 West Loop South
Suite 1300
Houston, Texas 77027

AERIAL MAP

SUITE 120: 7,500 SF



CONTACT INFORMATION

DARRYL NOON

713.270.3325

darryl.noon@transwestern.com

JUDE FILIPPONE

713.270.3318

jude.filippone@transwestern.com

BRIAN GAMMILL

713.270.3321

brian.gammill@transwestern.com