

Dell Five A

18640-18690 Lake Drive East, Chanhassen, MN 55317



FOR LEASE

dellFIVE



For more information, please contact:

Jason Meyer
Executive Director
+1 952 820 8735
jason.j.meyer@cushwake.com

Kris Smeltzer
Executive Director
+1 952 837 8575
kris.smeltzer@cushwake.com

Cushman & Wakefield
3500 American Blvd. W. Suite 200
Minneapolis, MN 55431
cushmanwakefield.com

Dell Five A

18640-18690 Lake Drive East, Chanhassen, MN 55317



FOR LEASE

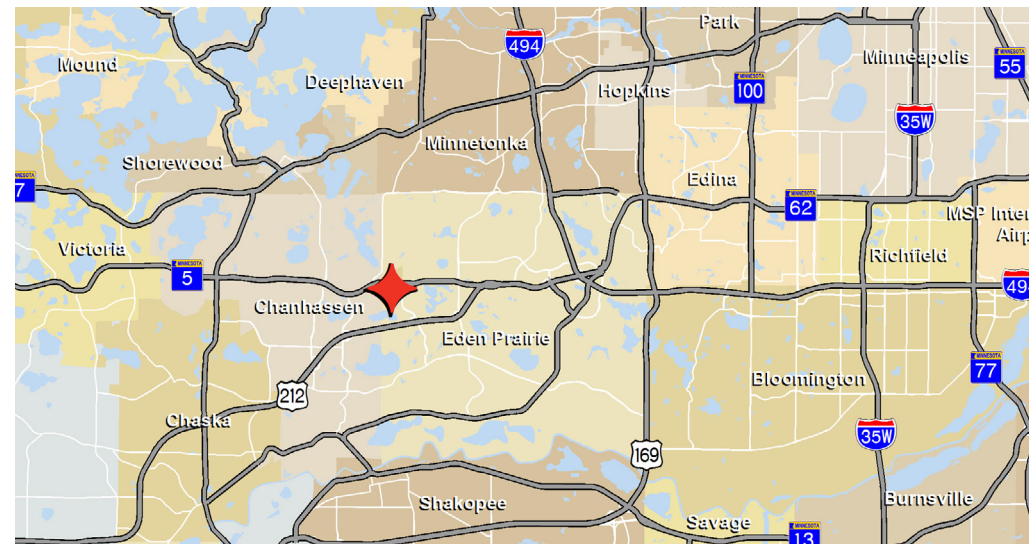
Property Highlights

- Owned and managed by CSM Corporation
- Dell Five Business Park comprises of 464,204 total square feet in 9 buildings
- Easy access to I-494
- Endcap with good glassline
- 18' clear height
- Dock and grade level loading
- Excellent Hwy 5 visibility

Building Features

Total Square Feet	128,526 SF
Year Built	1996
Clear Height	18'
Lease Rates	\$10.00 PSF Office \$5.00 PSF Warehouse
2019 Tax & CAM	\$3.58 PSF Total
Utilities	Utility services to be separately metered and the responsibility of tenant, along with janitorial, trash removal, etc.
Power	400 amps, 277/480 Volt, 3phase

Vacancies				
Suite	Total SF	Office SF	Warehouse SF	Loading
18640	15,688	3,548	12,140	2 docks
18674	9,011	3,053	5,958	1 dock
18684	21,000	11,873	9,127	1 dock
18674/18684	30,011	14,926	15,085	2 docks
18640/18684	36,688	15,421	21,267	3 docks
18640/18674/18684	45,699	18,474	27,225	4 docks



For more information, please contact:

Jason Meyer
Executive Director
+1 952 820 8735
jason.j.meyer@cushwake.com

Kris Smeltzer
Executive Director
+1 952 837 8575
kris.smeltzer@cushwake.com

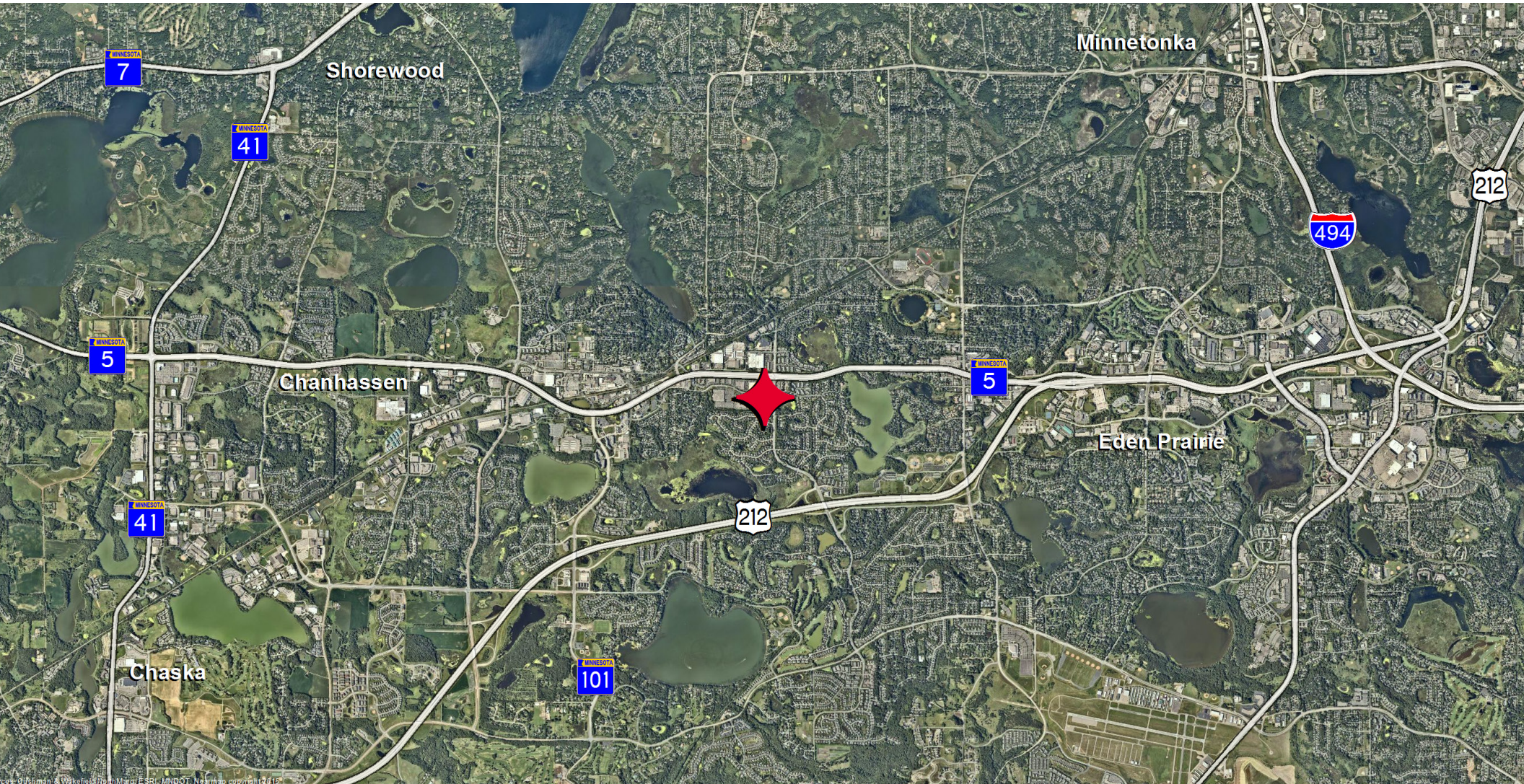
Cushman & Wakefield
3500 American Blvd. W. Suite 200
Minneapolis, MN 55431
cushmanwakefield.com

Dell Five A

18640-18690 Lake Drive East, Chanhassen, MN 55317



FOR LEASE



For more information, please contact:

Jason Meyer
Executive Director
+1 952 820 8735
jason.j.meyer@cushwake.com

Kris Smeltzer
Executive Director
+1 952 837 8575
kris.smeltzer@cushwake.com

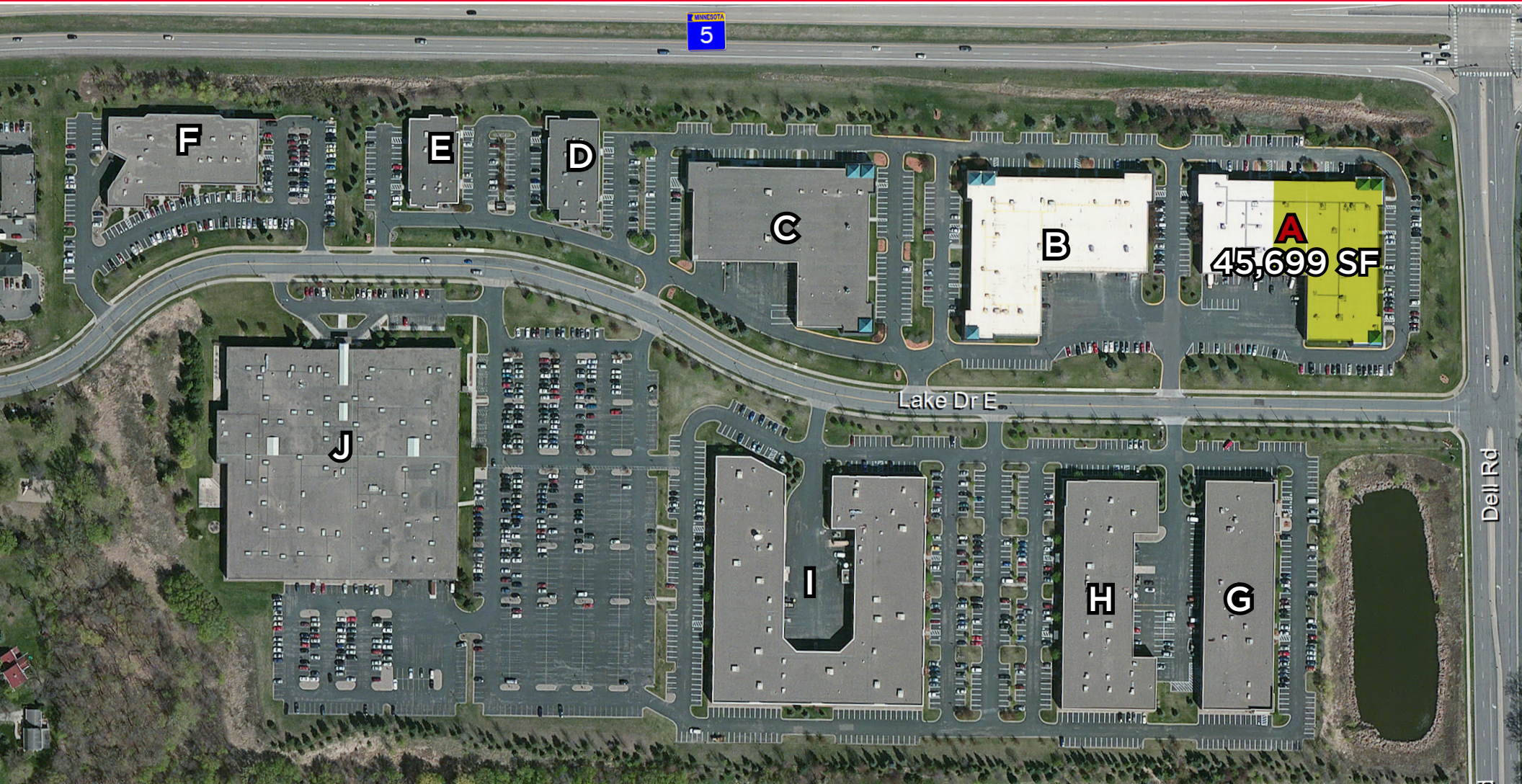
Cushman & Wakefield
3500 American Blvd. W. Suite 200
Minneapolis, MN 55431
cushmanwakefield.com

Dell Five A

18640-18690 Lake Drive East, Chanhassen, MN 55317



FOR LEASE



For more information, please contact:

Jason Meyer
Executive Director
+1 952 820 8735
jason.j.meyer@cushwake.com

Kris Smeltzer
Executive Director
+1 952 837 8575
kris.smeltzer@cushwake.com

Cushman & Wakefield
3500 American Blvd. W. Suite 200
Minneapolis, MN 55431
cushmanwakefield.com

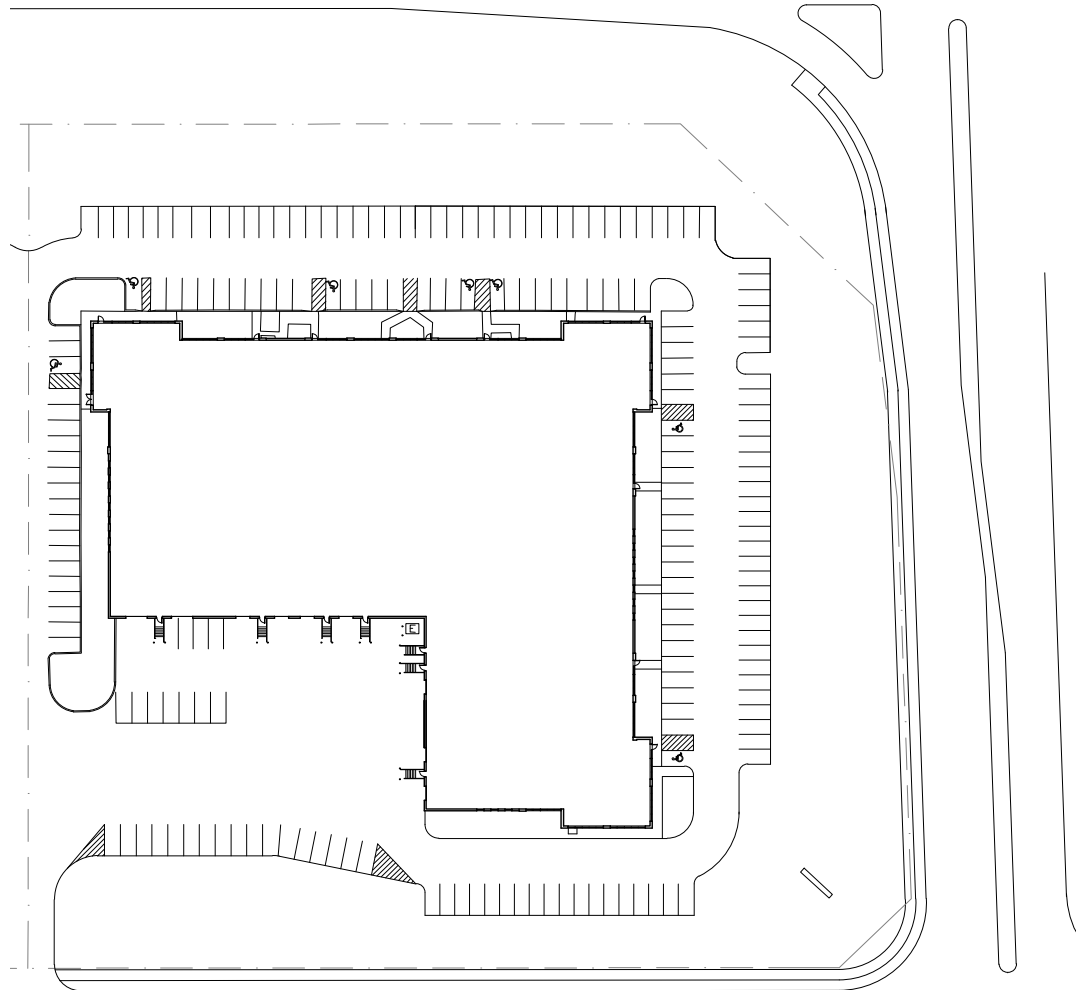
Dell Five A

18640-18690 Lake Drive East, Chanhassen, MN 55317



FOR LEASE

Site Plan



For more information, please contact:

Jason Meyer
Executive Director
+1 952 820 8735
jason.j.meyer@cushwake.com

Kris Smeltzer
Executive Director
+1 952 837 8575
kris.smeltzer@cushwake.com

Cushman & Wakefield
3500 American Blvd. W. Suite 200
Minneapolis, MN 55431
cushmanwakefield.com

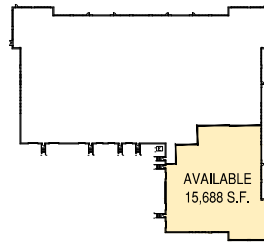
Dell Five A

18640-18690 Lake Drive East, Chanhassen, MN 55317



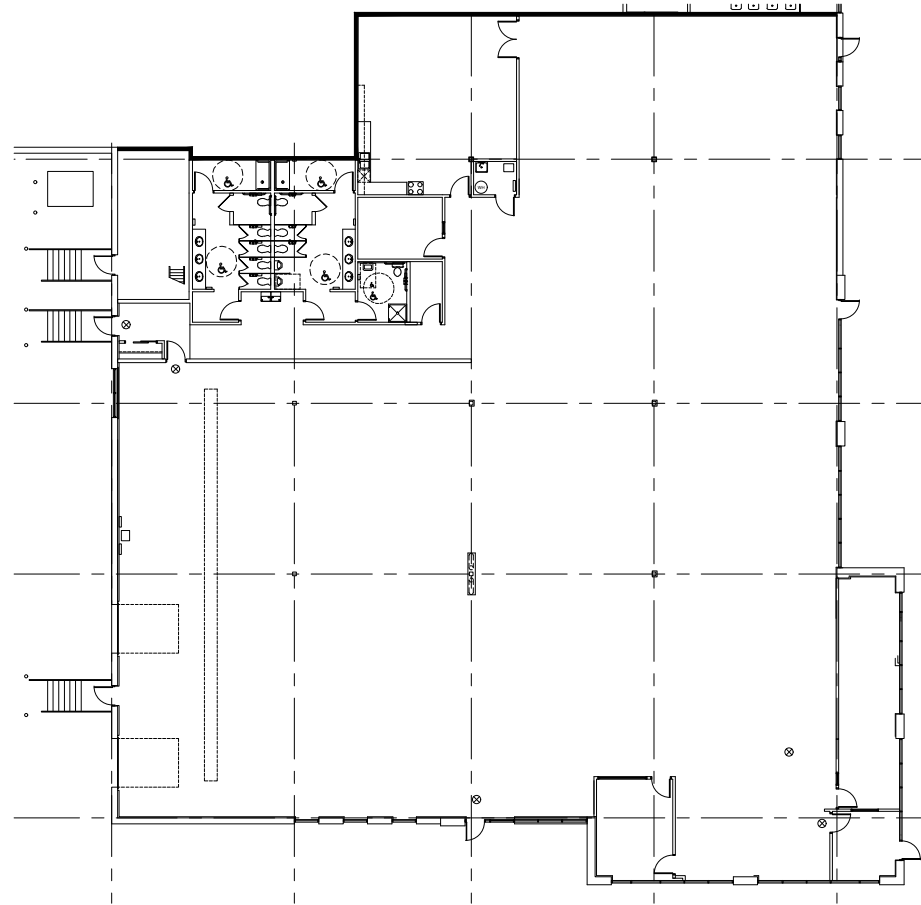
FOR LEASE

Floor Plan Suite 18640



BUILDING PLAN

TENANT SUMMARY - AVAILABLE	
OFFICE	3,548 SF
WAREHOUSE	12,140 SF
TOTAL	15,688 SF



FLOOR PLAN

For more information, please contact:

Jason Meyer
Executive Director
+1 952 820 8735
jason.j.meyer@cushwake.com

Kris Smeltzer
Executive Director
+1 952 837 8575
kris.smeltzer@cushwake.com

Cushman & Wakefield
3500 American Blvd. W. Suite 200
Minneapolis, MN 55431
cushmanwakefield.com

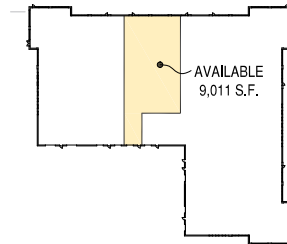
Dell Five A

18640-18690 Lake Drive East, Chanhassen, MN 55317



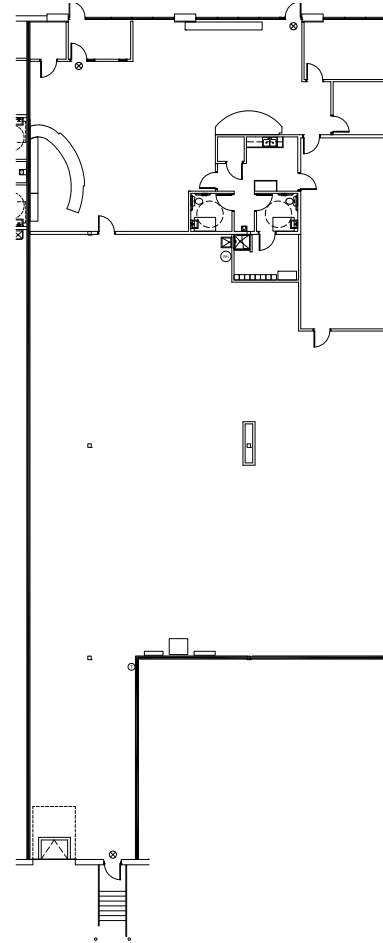
FOR LEASE

Floor Plan Suite 18674



BUILDING PLAN

TENANT SUMMARY	
OFFICE	3,053 SF
WAREHOUSE	5,958 SF
TOTAL	9,011 SF



FLOOR PLAN

For more information, please contact:

Jason Meyer
Executive Director
+1 952 820 8735
jason.j.meyer@cushwake.com

Kris Smeltzer
Executive Director
+1 952 837 8575
kris.smeltzer@cushwake.com

Cushman & Wakefield
3500 American Blvd. W. Suite 200
Minneapolis, MN 55431
cushmanwakefield.com

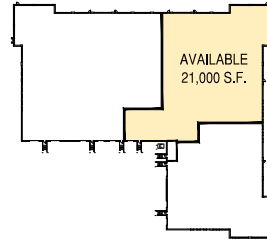
Dell Five A

18640-18690 Lake Drive East, Chanhassen, MN 55317



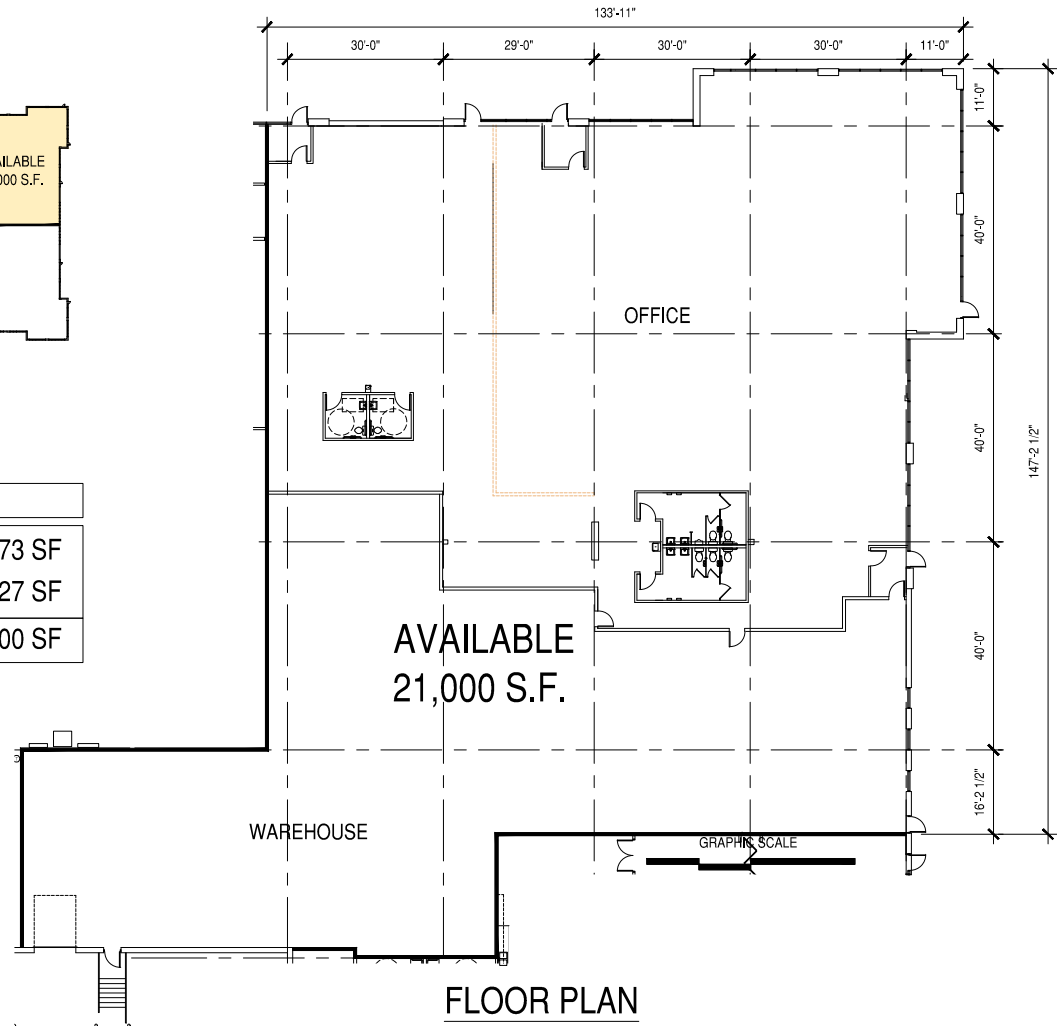
FOR LEASE

Floor Plan Suite 18684



BUILDING PLAN

TENANT SUMMARY - AVAILABLE	
OFFICE	11,873 SF
WAREHOUSE	9,127 SF
TOTAL	21,000 SF



FLOOR PLAN

For more information, please contact:

Jason Meyer
Executive Director
+1 952 820 8735
jason.j.meyer@cushwake.com

Kris Smeltzer
Executive Director
+1 952 837 8575
kris.smeltzer@cushwake.com

Cushman & Wakefield
3500 American Blvd. W. Suite 200
Minneapolis, MN 55431
cushmanwakefield.com

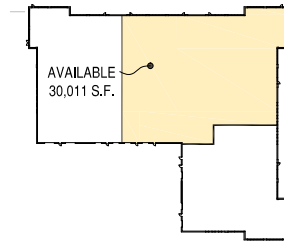
Dell Five A

18640-18690 Lake Drive East, Chanhassen, MN 55317



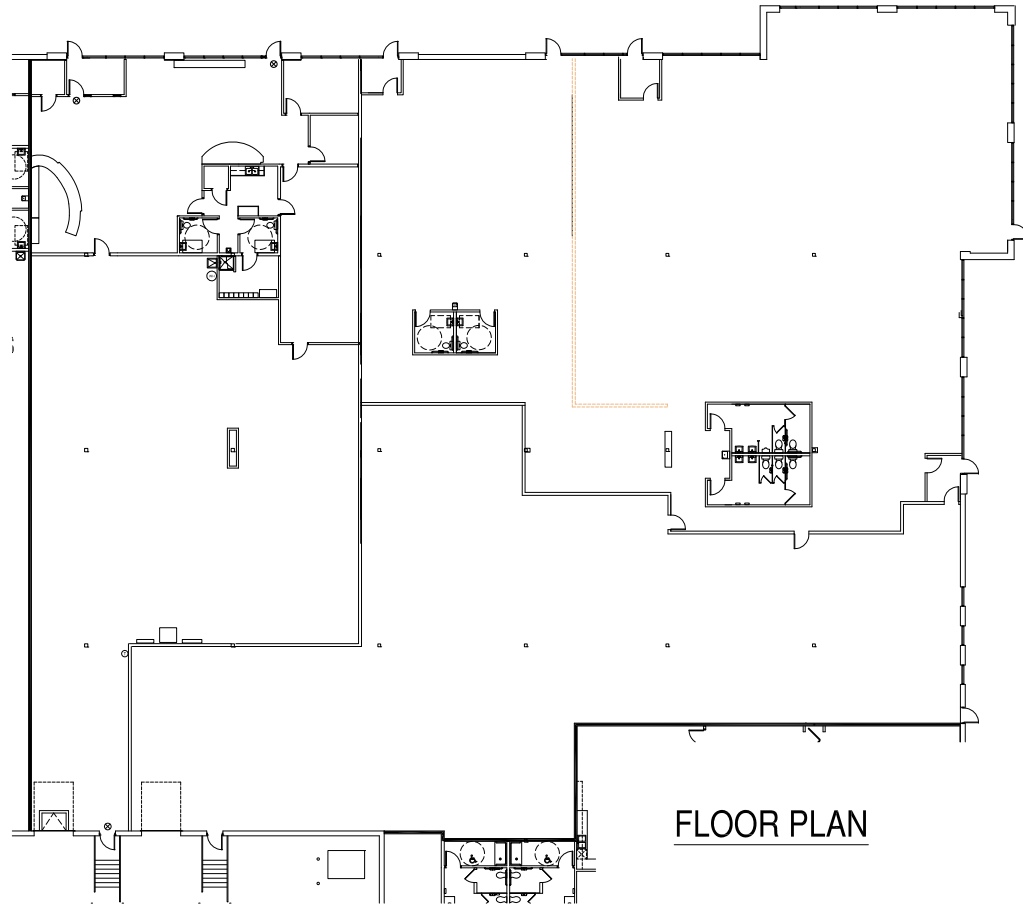
FOR LEASE

Floor Plan Suites 18674 / 18684



BUILDING PLAN

TENANT SUMMARY	
OFFICE	14,926 SF
WAREHOUSE	15,085 SF
TOTAL	30,011 SF



For more information, please contact:

Jason Meyer
Executive Director
+1 952 820 8735
jason.j.meyer@cushwake.com

Kris Smeltzer
Executive Director
+1 952 837 8575
kris.smeltzer@cushwake.com

Cushman & Wakefield
3500 American Blvd. W. Suite 200
Minneapolis, MN 55431
cushmanwakefield.com

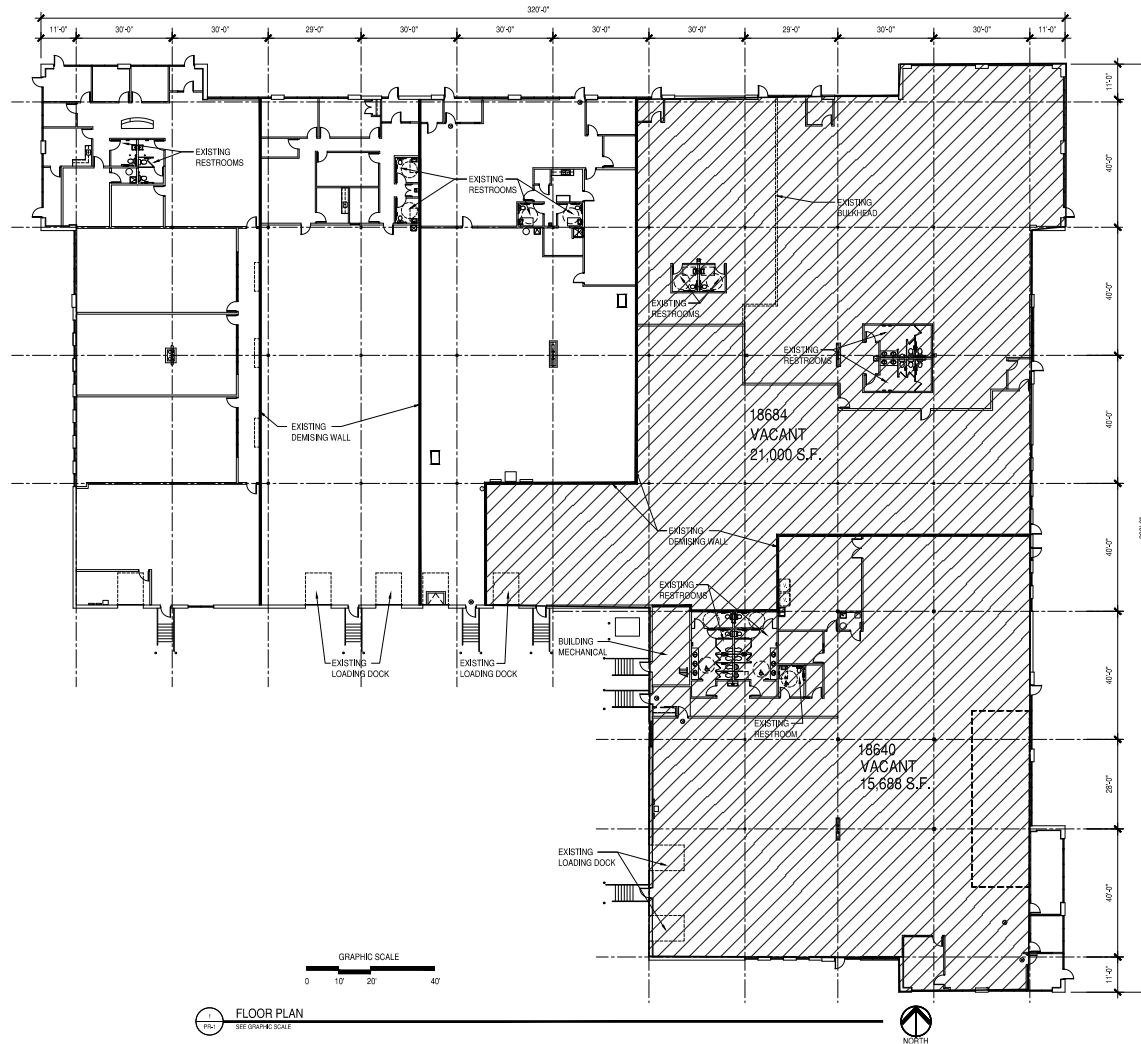
Dell Five A

18640-18690 Lake Drive East, Chanhassen, MN 55317



FOR LEASE

Floor Plan Suites 18640 / 18684



For more information, please contact:

Jason Meyer
Executive Director
+1 952 820 8735
jason.j.meyer@cushwake.com

Kris Smeltzer
Executive Director
+1 952 837 8575
kris.smeltzer@cushwake.com

Cushman & Wakefield
3500 American Blvd. W. Suite 200
Minneapolis, MN 55431
cushmanwakefield.com

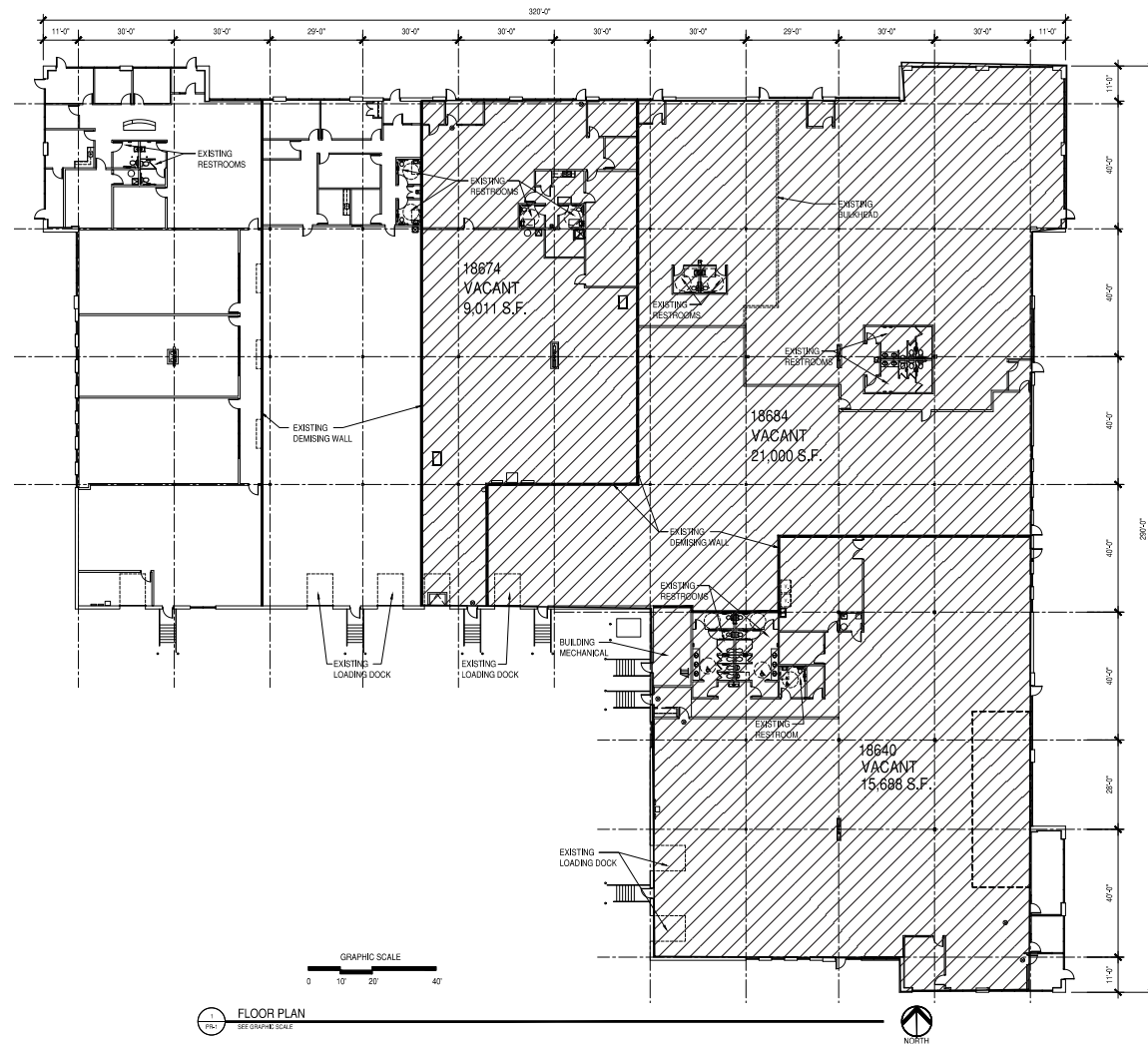
Dell Five A

18640-18690 Lake Drive East, Chanhassen, MN 55317



FOR LEASE

Floor Plan Suites 18640 / 18674 / 18684



For more information, please contact:

Jason Meyer
Executive Director
+1 952 820 8735
jason.j.meyer@cushwake.com

Kris Smeltzer
Executive Director
+1 952 837 8575
kris.smeltzer@cushwake.com

Cushman & Wakefield
3500 American Blvd. W. Suite 200
Minneapolis, MN 55431
cushmanwakefield.com