



For lease

# Presidential Business Center

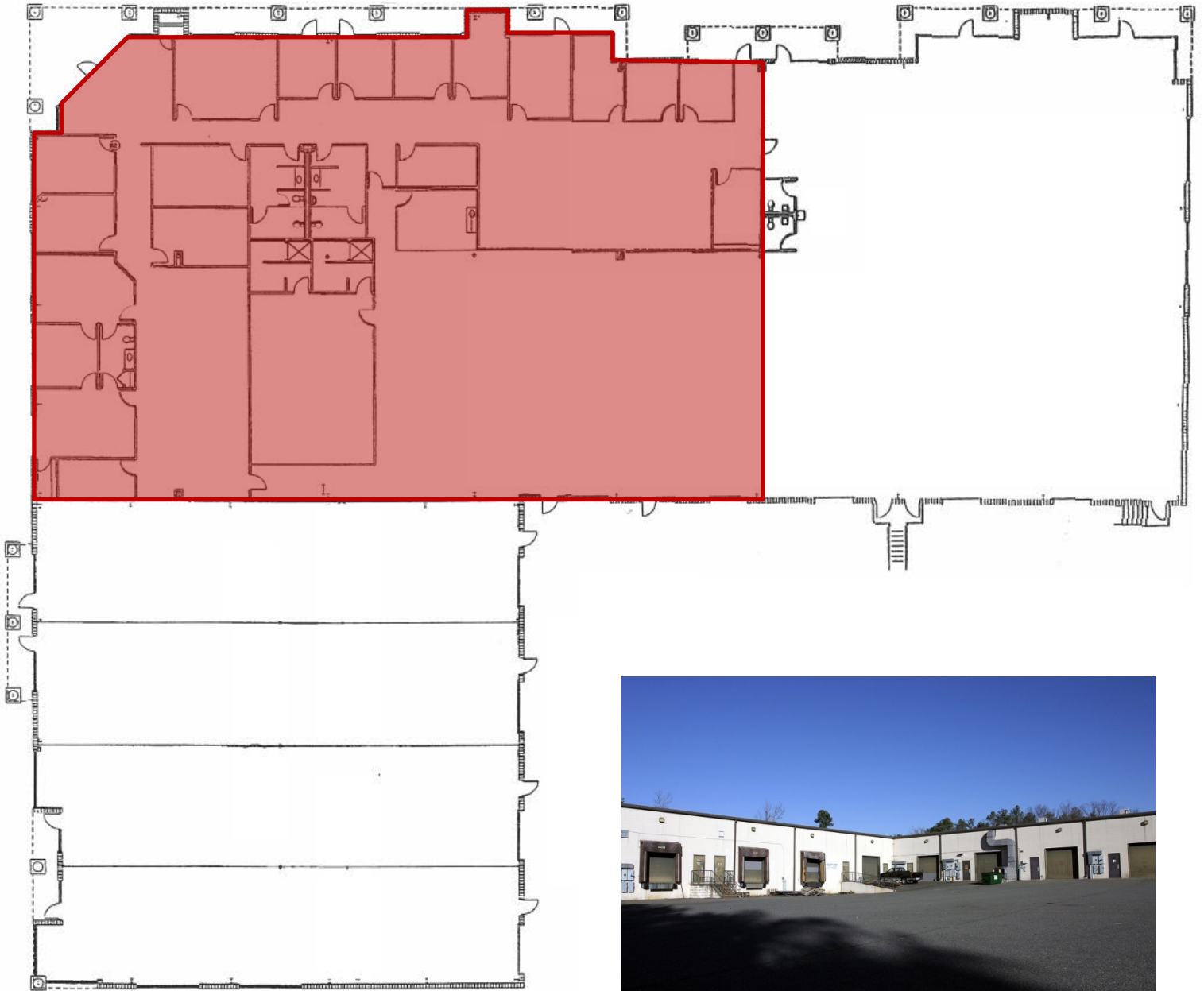
323 Hill Carter Parkway  
Ashland, Virginia 23005



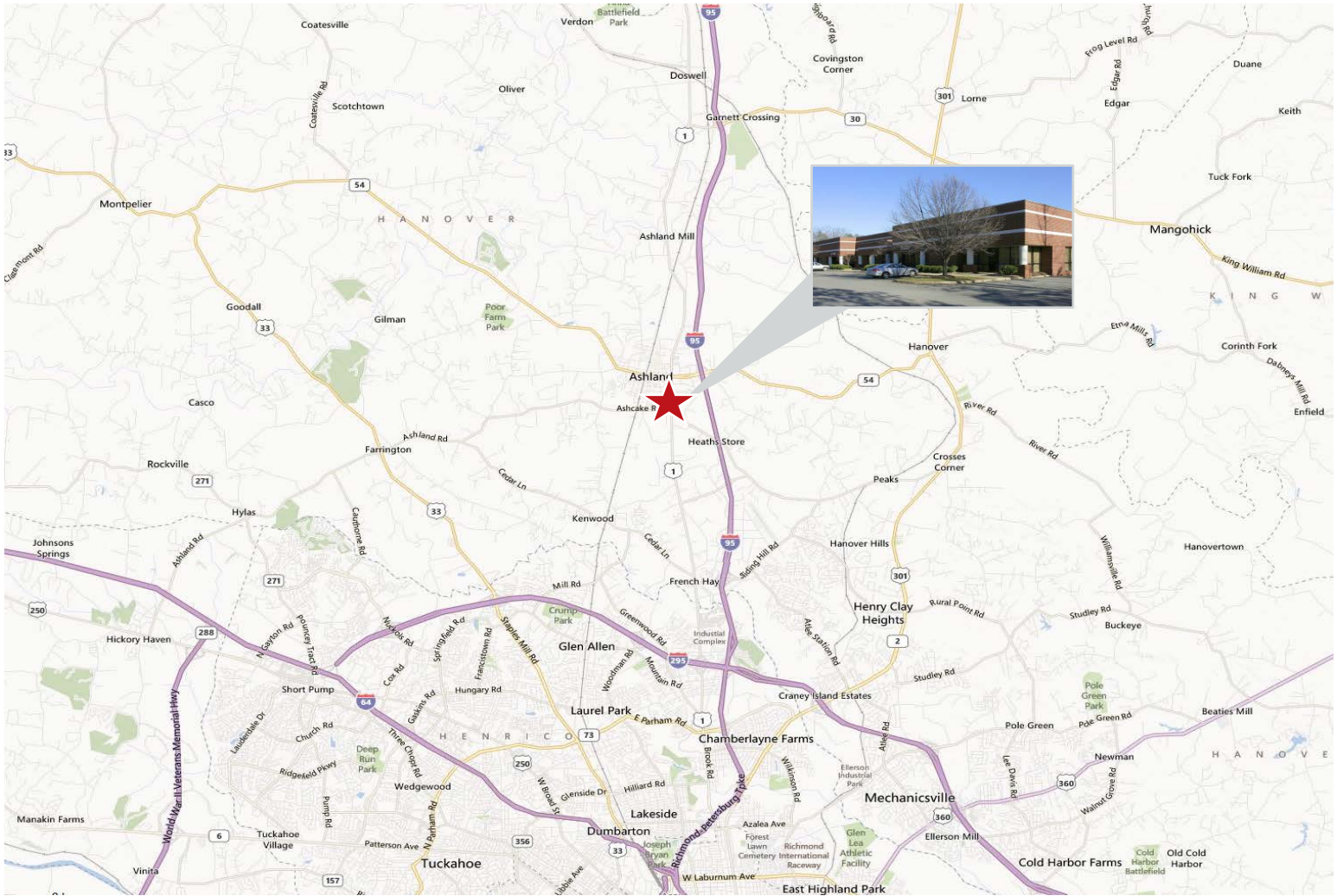
## Features

- Approximately 14,000 s.f. flex space available for lease
- Convenient access to I-95, I-295 and I-64
- Ample on-site parking; ratio of 3.19/1,000 s.f.
- One drive-in and loading dock
- 17 ft. ceilings
- Year built: 1988
- Zoning: M-1, light industrial zoning

Floor plan



## Location



Scott Keeton  
+1 804 200 6460  
[Scott.Keeton@am.jll.com](mailto:Scott.Keeton@am.jll.com)

Adam Lawson  
+1 804 200 6384  
[Adam.Lawson@am.jll.com](mailto:Adam.Lawson@am.jll.com)



### DISCLAIMER

Although information has been obtained from sources deemed reliable, Owner, Jones Lang LaSalle, and/or their representatives, brokers or agents make no guarantees as to the accuracy of the information contained herein, and offer the Property without express or implied warranties of any kind. The Property may be withdrawn without notice. If the recipient of this information has signed a confidentiality agreement regarding this matter, this information is subject to the terms of that agreement. ©2014. Jones Lang LaSalle. All rights reserved.