



For Lease

Up to 70,000 rsf available immediately at the new Jefferson Tower

- Partial and full floors available
- Spectacular views in all directions
- Efficient floor plates
- On-site management, strong ownership
- Direct concourse access
- Over 2,000 parking spaces within 1/2 of a block
- Midtown Village Amenities:
Steps away from the Fashion Outlets of Philadelphia at the Gallery, PA Convention Center, Marriott Hotel, Loews Hotel, Reading Terminal Market
- Street to Suite renovations planned

**1101 Market Street
Philadelphia, PA**

Joshua Sloan

+1 215 988 5554

joshua.sloan@am.jll.com

David Healy

+1 215 988 5555

david.healy@am.jll.com

Alex Breitmayer

+1 215 399 1813

alex.breitmayer@am.jll.com

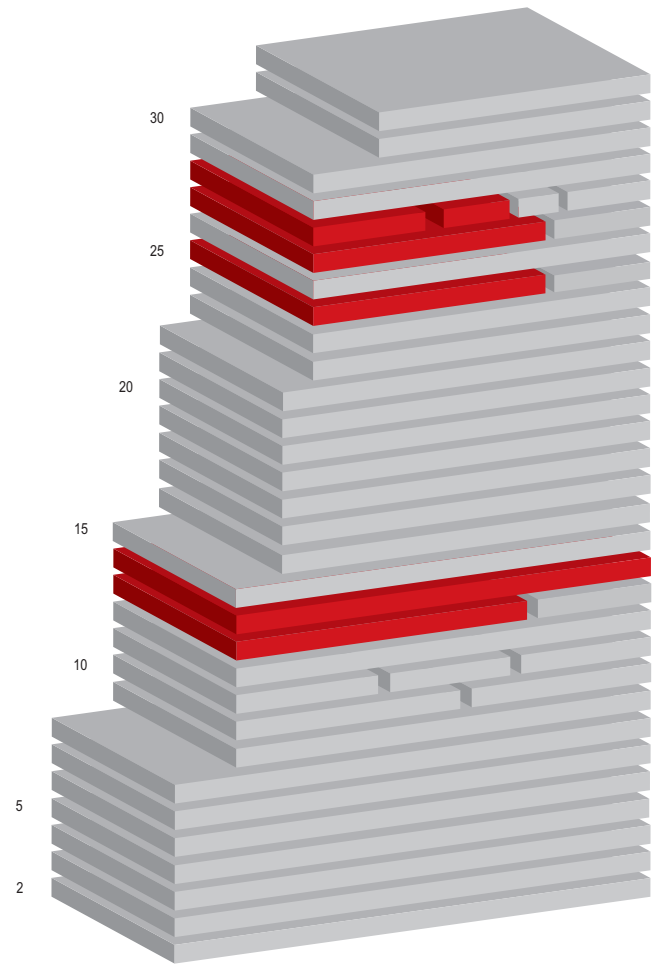
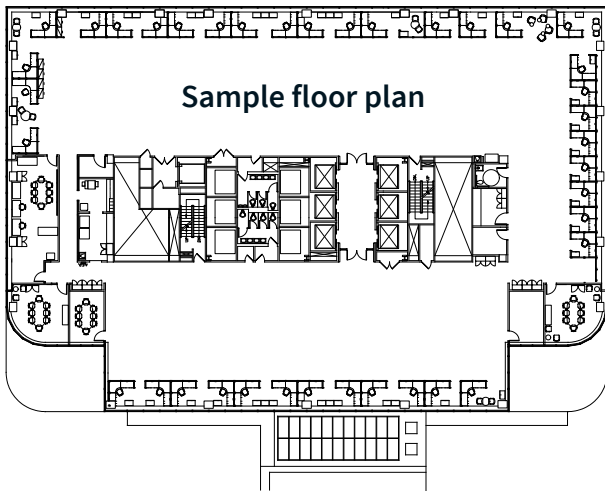
JLL

1650 Arch Street, Suite 2500
Philadelphia, PA 19103



1101 Market Street, Philadelphia, PA

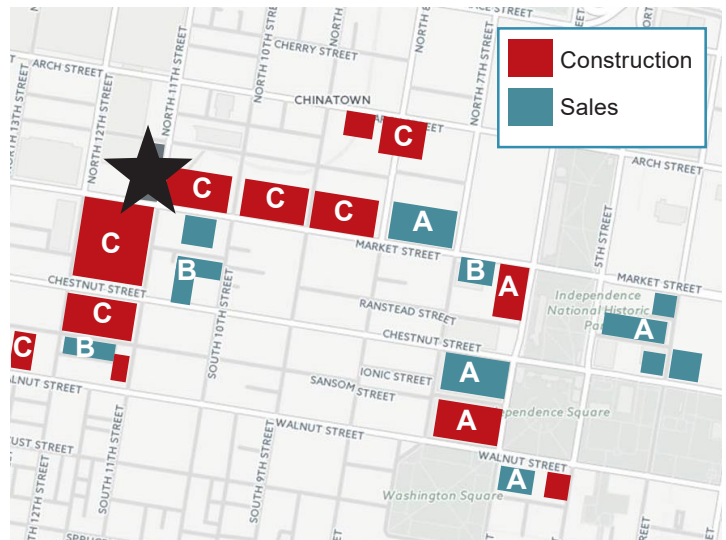
- 28th floor: 9,397 rsf | 2,262 rsf
- 27th floor: 10,156 rsf
- 25th floor: 12,753 rsf
- 14th floor: 20,642 rsf
- 13th floor: 15,258 rsf



\$1.5 Billion in projected Development Activity

The Redevelopment of Market Street East

- Major office assets are being repositioned for increasingly diverse tenant base (A)
- Underbuilt sites trading rapidly as developers plan more residences, boutique office, retail (B)
- Massive sites experiencing total reinvention as area transitions to 24/7 live/work/play center (C)



DISCLAIMER

Although information has been obtained from sources deemed reliable, neither Owner nor JLL makes any guarantees, warranties or representations, express or implied, as to the completeness or accuracy as to the information contained herein. Any projections, opinions, assumptions or estimates used are for example only. There may be differences between projected and actual results, and those differences may be material. The Property may be withdrawn without notice. Neither Owner nor JLL accepts any liability for any loss or damage suffered by any party resulting from reliance on this information. If the recipient of this information has signed a confidentiality agreement regarding this matter, this information is subject to the terms of that agreement. ©2019. Jones Lang LaSalle IP, Inc. All rights reserved.

