

FOR LEASE IN CARY

5501 Dillard Drive (2nd Floor) – Entire Floor Available
(Can increase from 12,341 SF to 26,000 SF)



5501 Dillard Drive

A two-story brick and glass, Class A office building with a total of 58,583 SF located in the Crossroads Corporate Park, a 133-acre mixed-use park

*Space Available Immediately
Approximately 12,341 SF to
26,000 SF of Class A office
space located on the second
floor. Entire floor is available.*

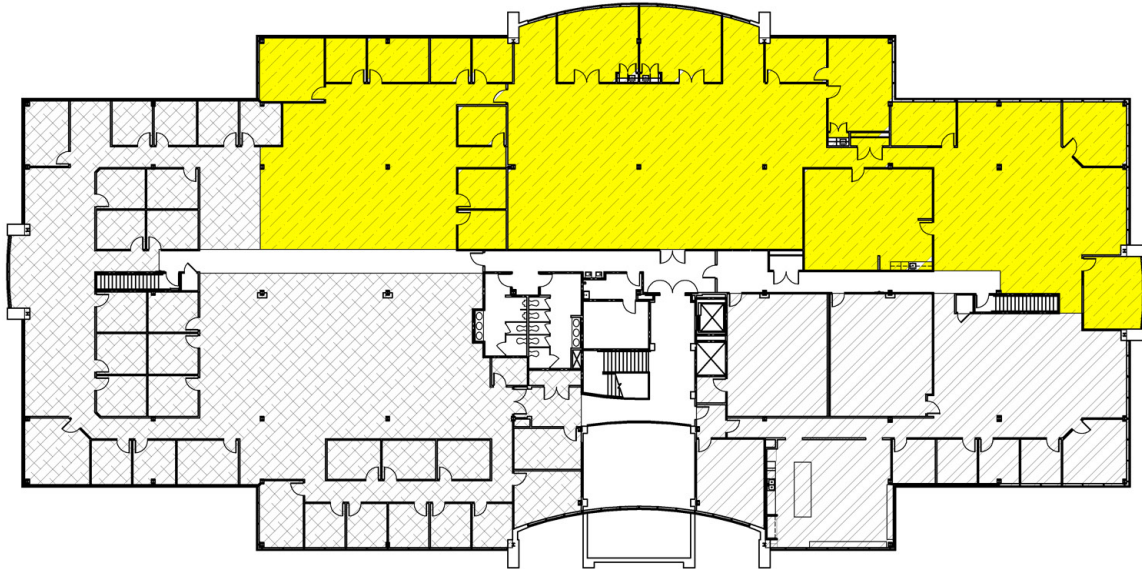
- ✦ Contemporary entry-level lobby features an elegant blend of marble and granite with inlaid carpet, and fabric wall covering
- ✦ Existing second generation build-out with interior glass features, conference rooms, break and IT rooms, etc.
- ✦ Close proximity to retail, restaurants, hotels, apartments, fitness centers and highways
- ✦ Lake views

*For more information, contact: Frank Baird 919.233.9901
email fbaird@casso.com or visit www.casso.com*

Information provided herein is secured from sources presumed to be reliable. However, all information is subject to verification.

FOR LEASE IN CARY

5501 Dillard Drive (2nd Floor) – Entire Floor Available
(Can increase from 12,341 SF to 26,000 SF)



- ✦ \$25.00 psf full-service asking rental rate
- ✦ High-tech building design with above standard electrical and telephone/data capacity
- ✦ 200 parking spaces on 58,000 sf leased
- ✦ Water views

*For more information, contact: Frank Baird 919.233.9901
email fbaird@casso.com or visit www.casso.com*

Information provided herein is secured from sources presumed to be reliable. However, all information is subject to verification.