



PROMINENCE 400 - 8880 FREEDOM CROSSING TRAIL



Prominence is a seven-building office park south of Baymeadows Road and adjacent to Interstate 95



# PROMINENCE JACKSONVILLE, FLORIDA

FOR MORE INFORMATION, PLEASE CONTACT,



**Michael Loftin**  
Executive Vice President  
+1 904 559 3911  
michael.loftin@am.jll.com

**Jesse Shimp**  
Senior Vice President  
+1 904 559 3910  
jesse.shimp@am.jll.com



New park entrance



On-site conference center



New lobby updates



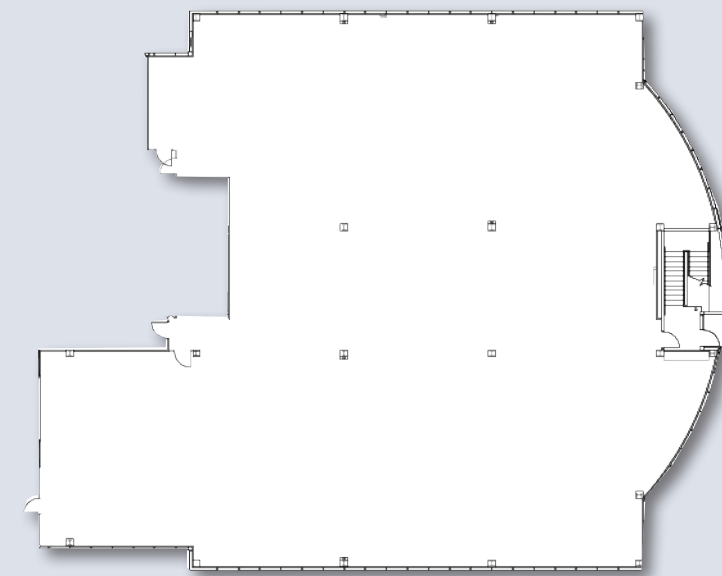
### PROPERTY LOCATION

Prominence is a seven-building office park totaling 752,000 s.f. south of Baymeadows Road and adjacent to Interstate 95. Located 10 minutes from the Central Business District, 30 minutes from the Jacksonville International Airport and 30 minutes from the Beach Communities, the property is in close proximity to numerous restaurants and stores along Baymeadows Road. The Avenues Mall is one interchange to the south.

### BUILDING FEATURES

- 9,912 r.s.f. available on first floor
- Building signage available
- Located in a 752,000 s.f. office park
- Large efficient floor plates
- Abundant free parking
- Fiber connectivity
- On-site café and conference center
- Park-like setting with abundant landscaping
- Management office and service personnel on-site

## 8880 Freedom Crossing Trail FIRST FLOOR / PROMINENCE 400



# 9,912 r.s.f.