



## THIRD FLOOR SUBLEASE

### 6143 S WILLOW DRIVE | GREENWOOD VILLAGE, CO

**SPACE AVAILABLE:**

Suite 350 - 4,007 SF

**LEASE RATE:**

\$14.00/SF FSG

**EXPIRATION:**

January 31, 2022

**OFFICE FOR SUBLEASE****PROPERTY HIGHLIGHTS:**

- Furniture available
- Kitchen
- Reception area
- Western views
- Close proximity to Park-N-Ride
- 3/1,000 surface parking
- Renovated building lobby and common areas
- Fully equipped video conference room

For information, please contact:

**JAMIE GARD**

303.260.4341

[jgard@ngkf.com](mailto:jgard@ngkf.com)

**LAURA SPERRY**

303.260.4259

[laura.sperry@ngkf.com](mailto:laura.sperry@ngkf.com)



[ngkf.com](http://ngkf.com)

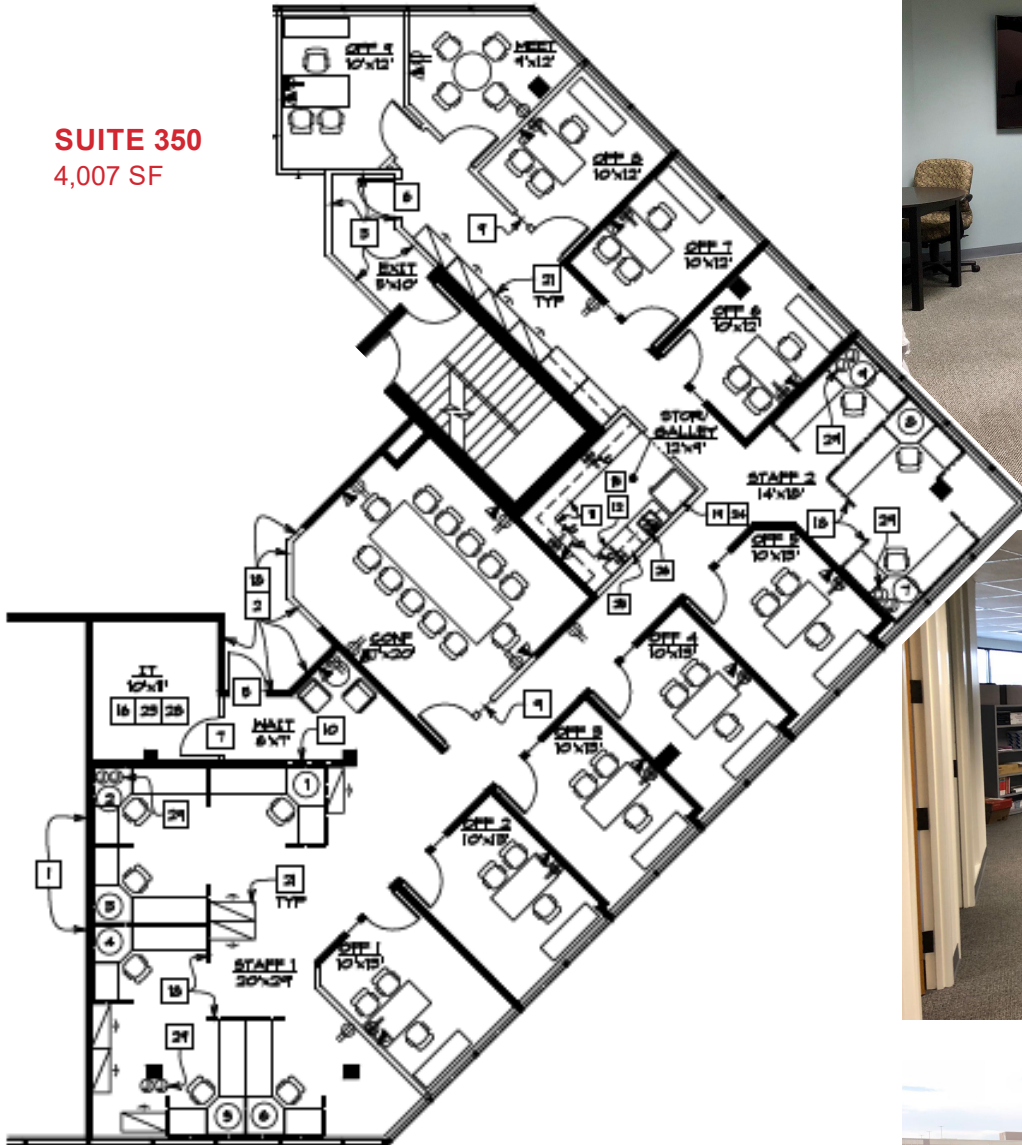
1800 Larimer Street, Suite 1700, Denver, CO 80202

The information contained herein has been obtained from sources deemed reliable but has not been verified and no guarantee, warranty or representation, either express or implied, is made with respect to such information. Terms of sale or lease and availability are subject to change or withdrawal without notice.



Newmark  
Knight Frank

**SUITE 350**  
4,007 SF



ngkf.com

1800 Larimer Street, Suite 1700, Denver, CO 80202

The information contained herein has been obtained from sources deemed reliable but has not been verified and no guarantee, warranty or representation, either express or implied, is made with respect to such information. Terms of sale or lease and availability are subject to change or withdrawal without notice.