

±1,084 & ±1,290 SF Available

Property Highlights

- Safeway anchored center located at Waterman Blvd. exit right off I-80
- Tenants in the center include: First Bank, Round Table Pizza, and UPS Store
- Excellent freeway visibility
- Good parking on-site

Traffic Counts

I-80 & Airbase Parkway	183,000 ADT
Waterman Blvd. b/n Ten Gate Rd. & Hilborn	18,489 ADT

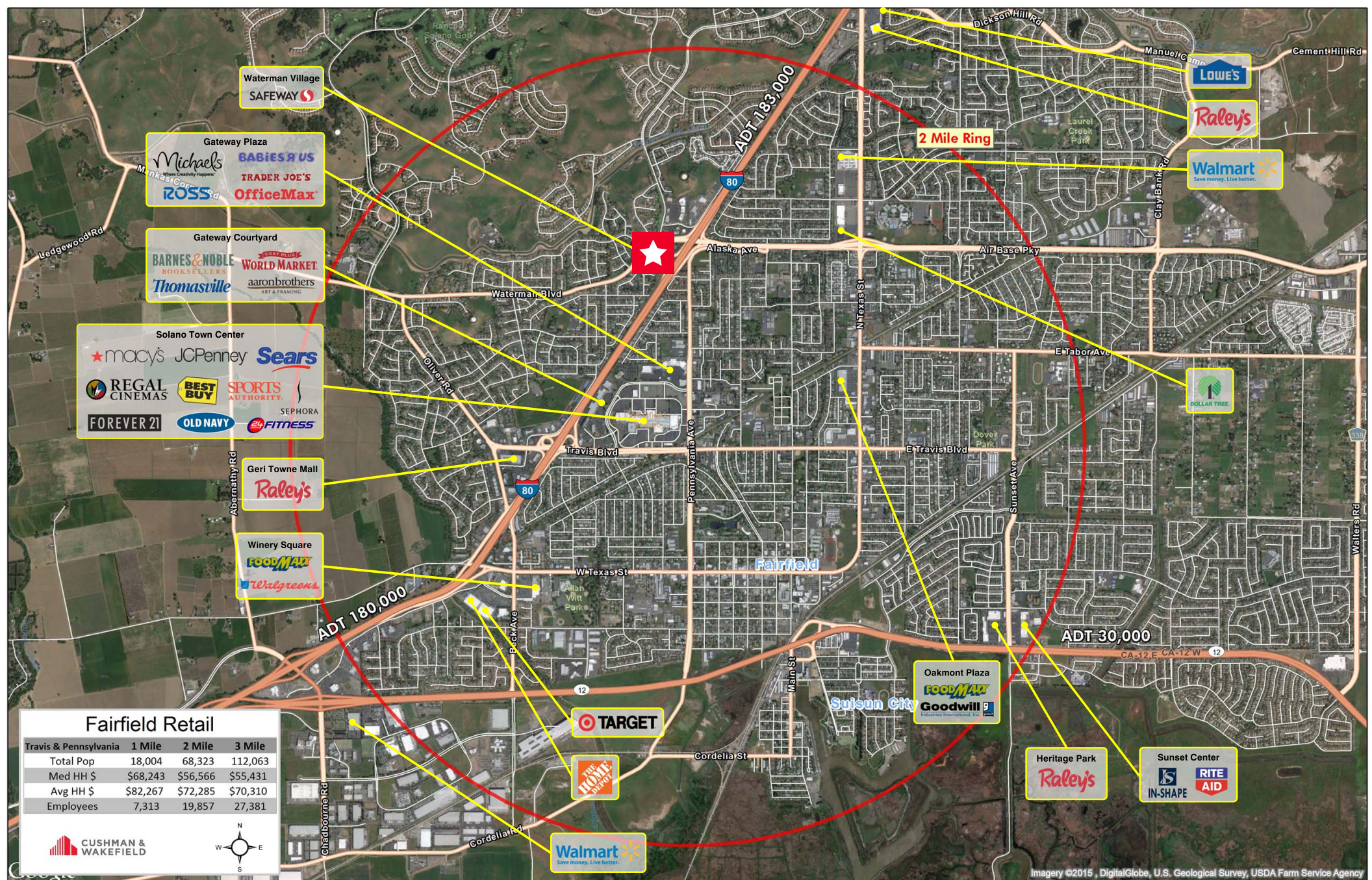
Ray Devlin

Director - Retail Services
+1 925 627 2883
ray.devlin@cushwake.com
LIC #01199417

1333 N. California Blvd, Suite 550
Walnut Creek, CA
main +1 925 930 0770
fax +1 925 935 3409
cushmanwakefield.com

Waterman Village Shopping Center

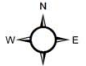
Fairfield, CA



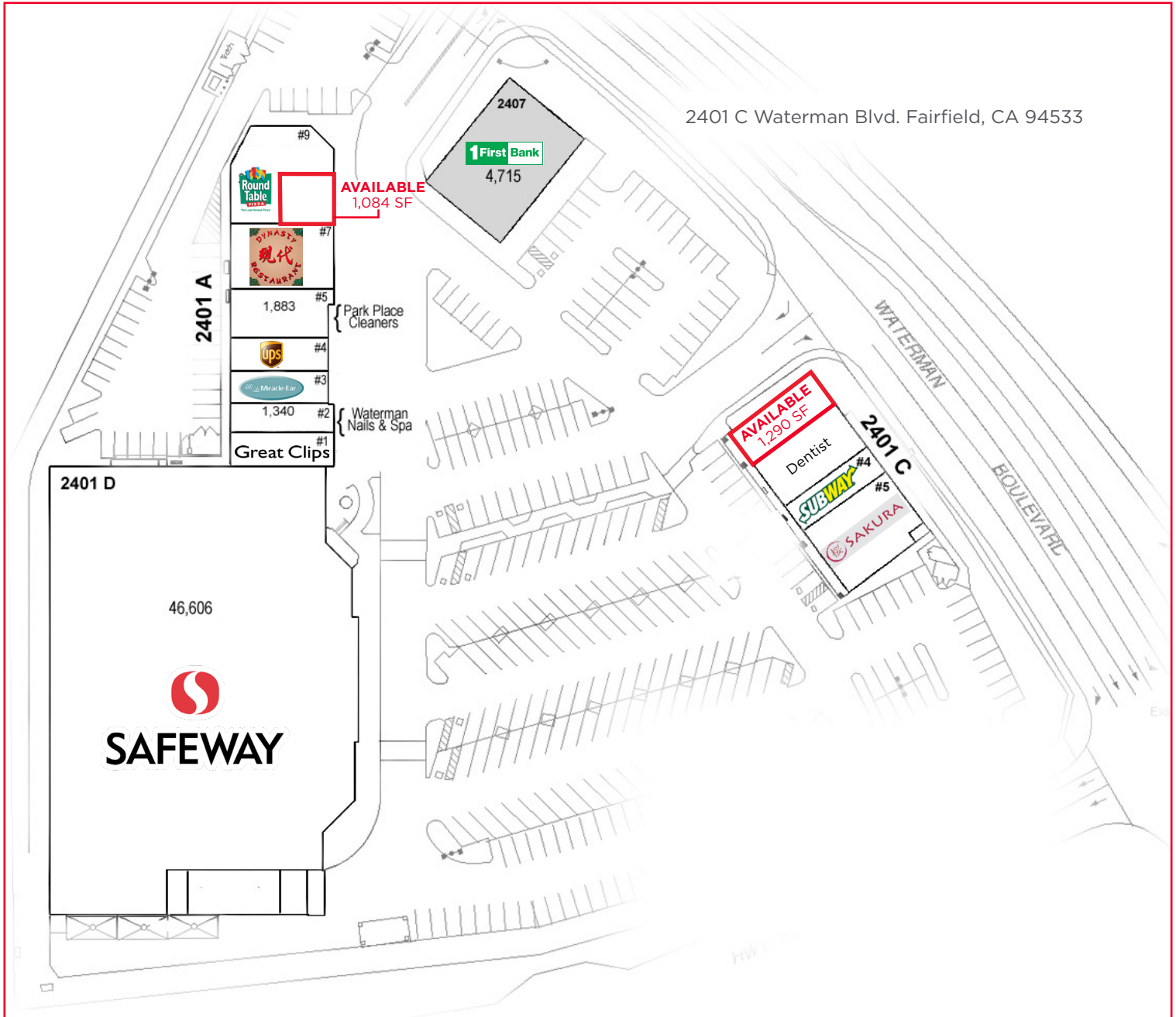
Fairfield Retail

Travis & Pennsylvania	1 Mile	2 Mile	3 Mile
Total Pop	18,004	68,323	112,063
Med HH \$	\$68,243	\$56,566	\$55,431
Avg HH \$	\$82,267	\$72,285	\$70,310
Employees	7,313	19,857	27,381

CUSHMAN & WAKEFIELD



Site Plan



Ray Devlin
Director - Retail Services
+1 925 627 2883
ray.devlin@cushwake.com
LIC #01199417

1333 N. California Blvd, Suite 550
Walnut Creek, CA
main +1 925 930 0770
fax +1 925 935 3409
cushmanwakefield.com



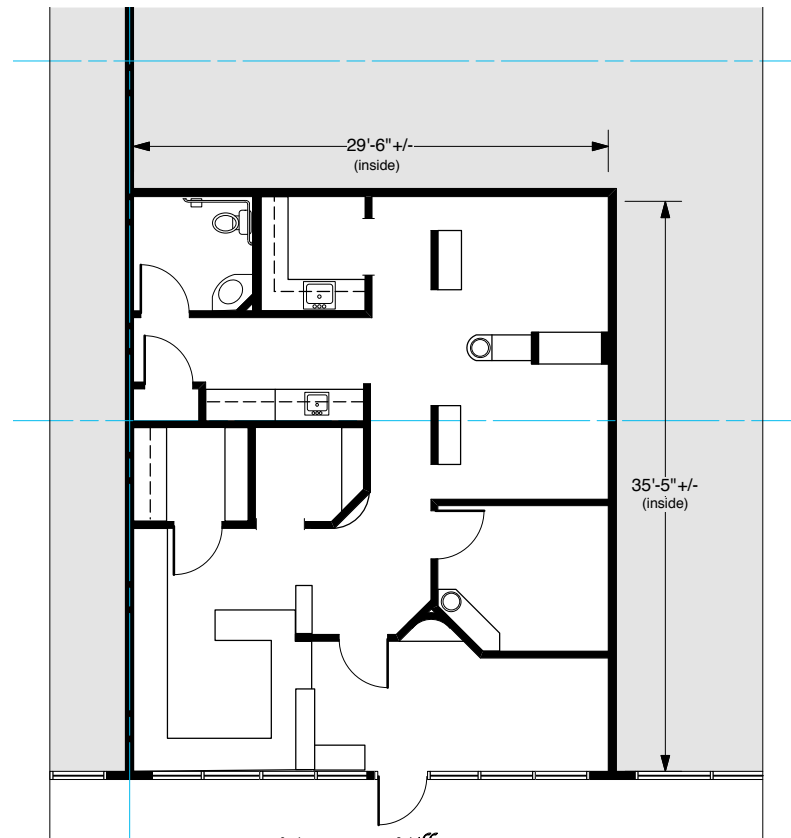
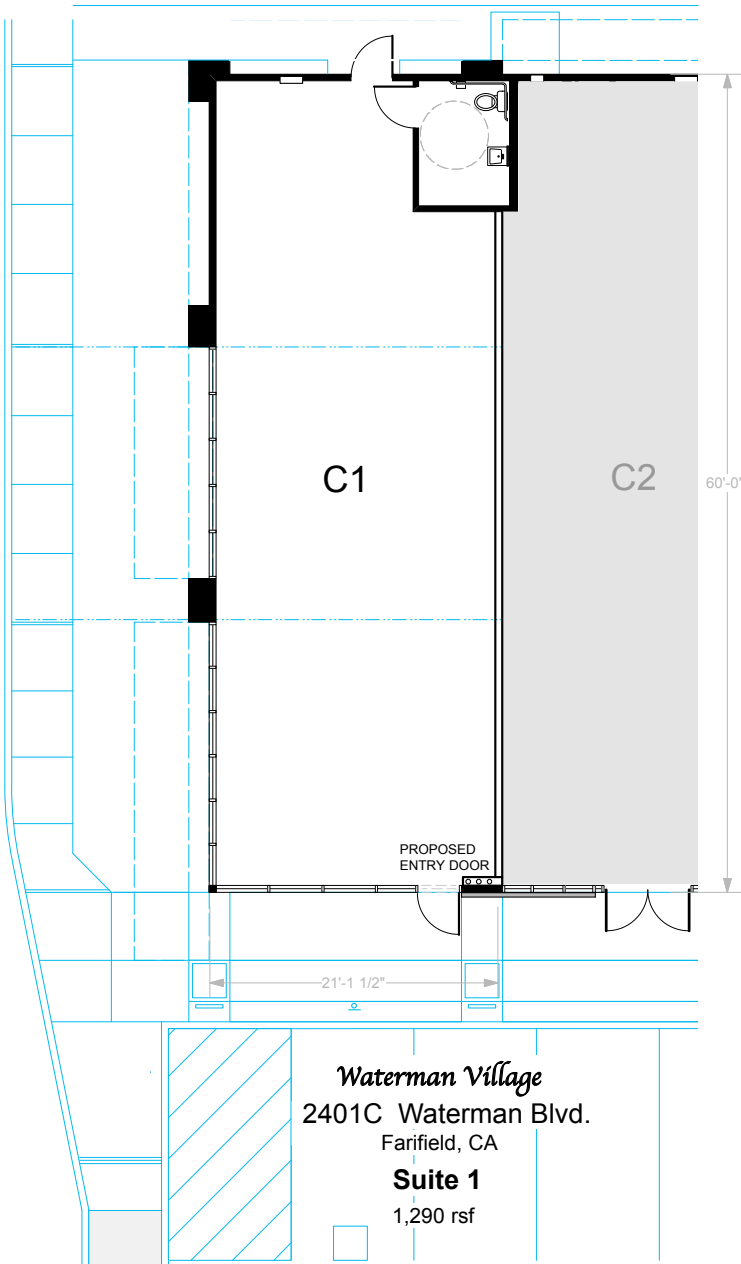
**CUSHMAN &
WAKEFIELD**

FOR LEASE

Waterman Village Shopping Center

Fairfield, CA

Floor Plan



Waterman Village
Fairfield, CA

2401A Waterman Blvd.
Suite #8
1,084 rsf

Ray Devlin

Director - Retail Services
+1 925 627 2883
ray.devlin@cushwake.com
LIC #01199417

1333 N. California Blvd, Suite 550
Walnut Creek, CA
main +1 925 930 0770
fax +1 925 935 3409
cushmanwakefield.com