



new listing



7-Eleven Anchored Strip Center in High Density Location

Located at the SWC of East Foothill Blvd. & Towne Ave.

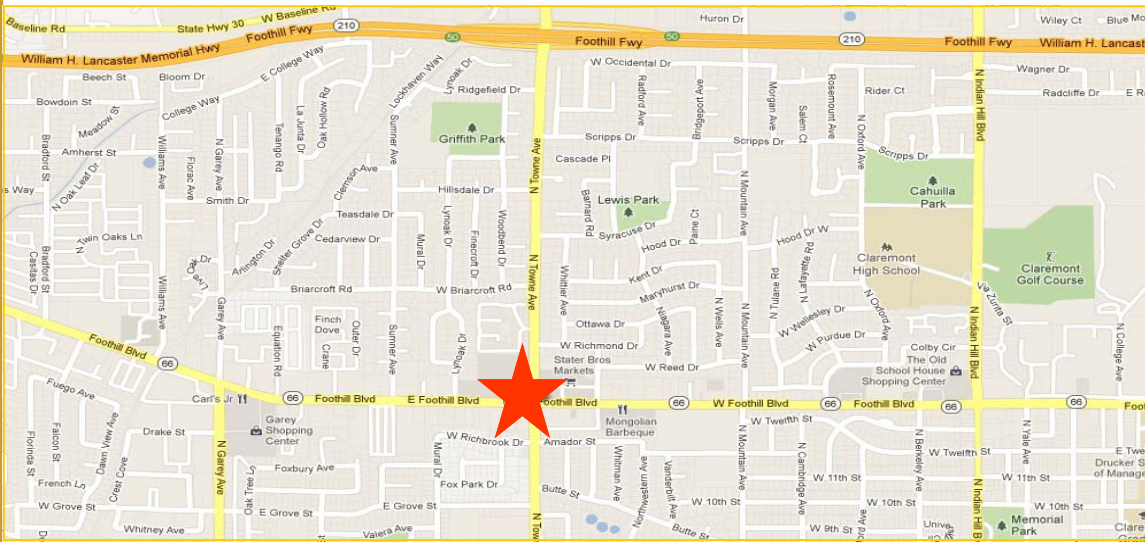
FEATURES

- ± 2400 Sq. Ft. Available
- Ample Parking in On-Site Lot
- Signalized Intersection
- Excellent Location Across From Staples and CVS and near Walgreens, Burger King, Baskin Robbins and More.

AREA AMENITIES

- Excellent Demographics
 - > 126,180 people within 3-miles
 - > \$86,057 Avg HH Income 3-mile
 - > 329,169 people within 5-miles
 - > \$78,371 Avg HH Income 5-mile
- Convenient Access to the 210-Fwy

**730 E. Foothill Blvd
Pomona, CA 91767**



CONTACT...

Dave O'Connell x 32
CA Real Estate Lic # 01398651

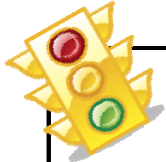
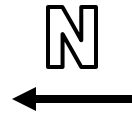
Leasing Agent
(818) 380-9966
(818) 380-9976 Fax

Dave@cbm1.com

1517 S. Sepulveda Blvd.
Los Angeles, CA 90025

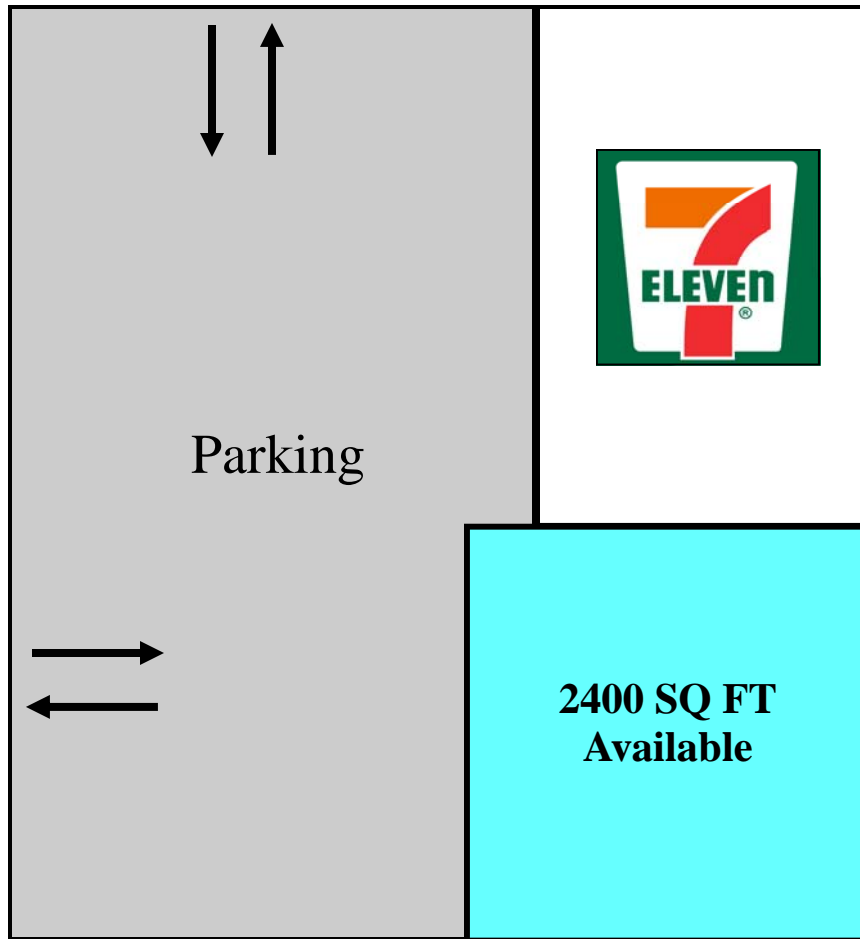
17030 Ventura Blvd, #200
Encino, CA 91316

SITE PLAN



Towne Ave.

Foothill Blvd.



2400 SQ FT
Available

DEMOGRAPHICS

DemographicsNow

Demographic Snapshot Comparison

Geography: 1 Mile: 730 E FOOTHILL BLVD POMONA, CA 91767, 3 Miles: 730 E FOOTHILL BLVD POMONA, CA 91767, 5 Miles: 730 E FOOTHILL BLVD POMONA, CA 91767...

	1 Mile: 730 E FOOTHILL BLVD POMONA, CA 91767	3 Miles: 730 E FOOTHILL BLVD POMONA, CA 91767	5 Miles: 730 E FOOTHILL BLVD POMONA, CA 91767
Population: 2014A			
Total Population	21,024	126,180	329,169
Female Population	52.7%	51.8%	50.9%
Male Population	47.2%	48.1%	49.0%
Population Density	6,685	4,458	4,187
Population Median Age	40.9	35.8	33.1
Total Employees	5,675	43,064	106,789
Total Establishments*	650	4,593	11,901
Population Growth 2000-2010	6.7%	0.5%	1.9%
Population Growth 2014A-2019	2.2%	1.3%	1.4%
Income: 2014A			
Average Household Income	\$84,795	\$86,057	\$78,371
Median Household Income	\$58,299	\$61,786	\$55,388
Per Capita Income	\$33,525	\$28,710	\$24,131
Avg Income Growth 2000-2010	40.9%	34.4%	31.5%
Avg Income Growth 2014A-2019	15.1%	13.8%	13.5%
Households: 2014A			
Households	8,219	40,605	99,281
Average Household Size	2.56	2.94	3.20
Hhld Growth 2000-2010	8.3%	1.3%	1.8%
Hhld Growth 2014A-2019	2.4%	2.0%	1.8%
Housing Units: 2014A			
Occupied Units	8,219	40,605	99,281
% Occupied Units	98.9%	98.3%	98.0%
% Vacant Housing Units	1.0%	1.6%	1.9%
Owner Occ Housing Growth 2000-2010	2.3%	-1.4%	-1.2%
Owner Occ Housing Growth 2000-2019	7.3%	1.7%	1.2%
Owner Occ Housing Growth 2014A-2019	1.0%	0.8%	0.9%
Occ Housing Growth 2000-2010	8.3%	1.3%	1.8%
Occ Housing Growth 2010-2019	7.3%	5.7%	5.7%
Occ Housing Growth 2014A-2019	2.4%	2.0%	1.8%
Race and Ethnicity: 2014A			
% American Indian or Alaska Native Population	0.8%	0.9%	1.0%
% Asian Population	10.3%	8.9%	8.1%
% Black Population	7.7%	6.7%	5.9%
% Hawaiian or Pacific Islander Population	0.2%	0.1%	0.1%
% Multirace Population	5.2%	5.0%	4.7%
% Other Race Population	12.1%	17.2%	22.2%
% White Population	63.5%	60.9%	57.7%
% Hispanic Population	35.3%	45.5%	56.6%
% Non Hispanic Population	64.6%	54.4%	43.3%