

FOR LEASE

OFFICE

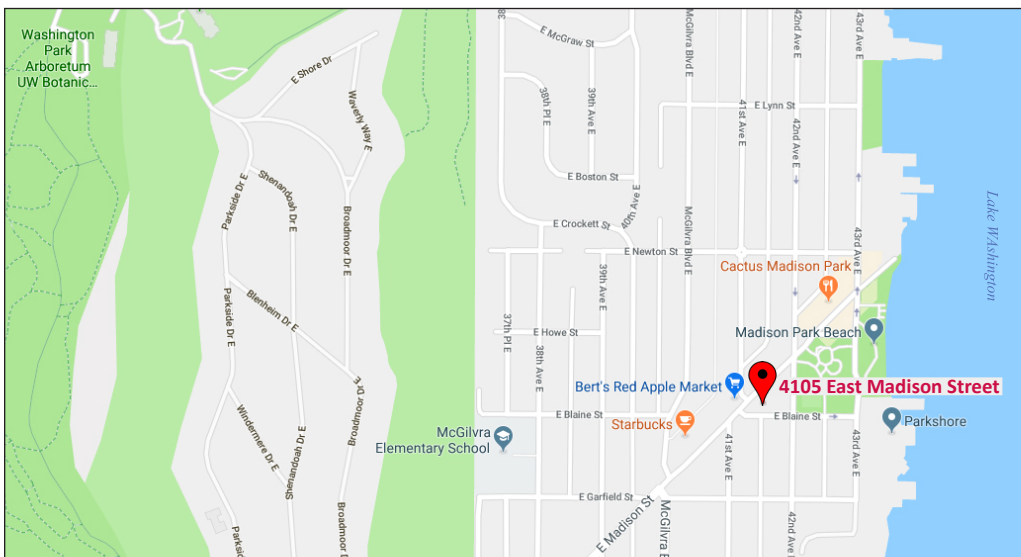
4105 E. Madison Street, Seattle, WA 98112



Space Available:

Type	SF	Rent
Suite 210A	210	\$1,475/mo.
Suite 210B	545	\$1,950/mo.
Suite 200D	180	\$1,200/mo.

FULL SERVICE



PROPERTY FEATURES

- Convenient E. Madison location
- Street parking
- Building has an elevator
- 2nd floor offices great for psychiatrist/psychologist or lawyer's office

FOR MORE INFORMATION PLEASE CONTACT:

EWING & CLARK

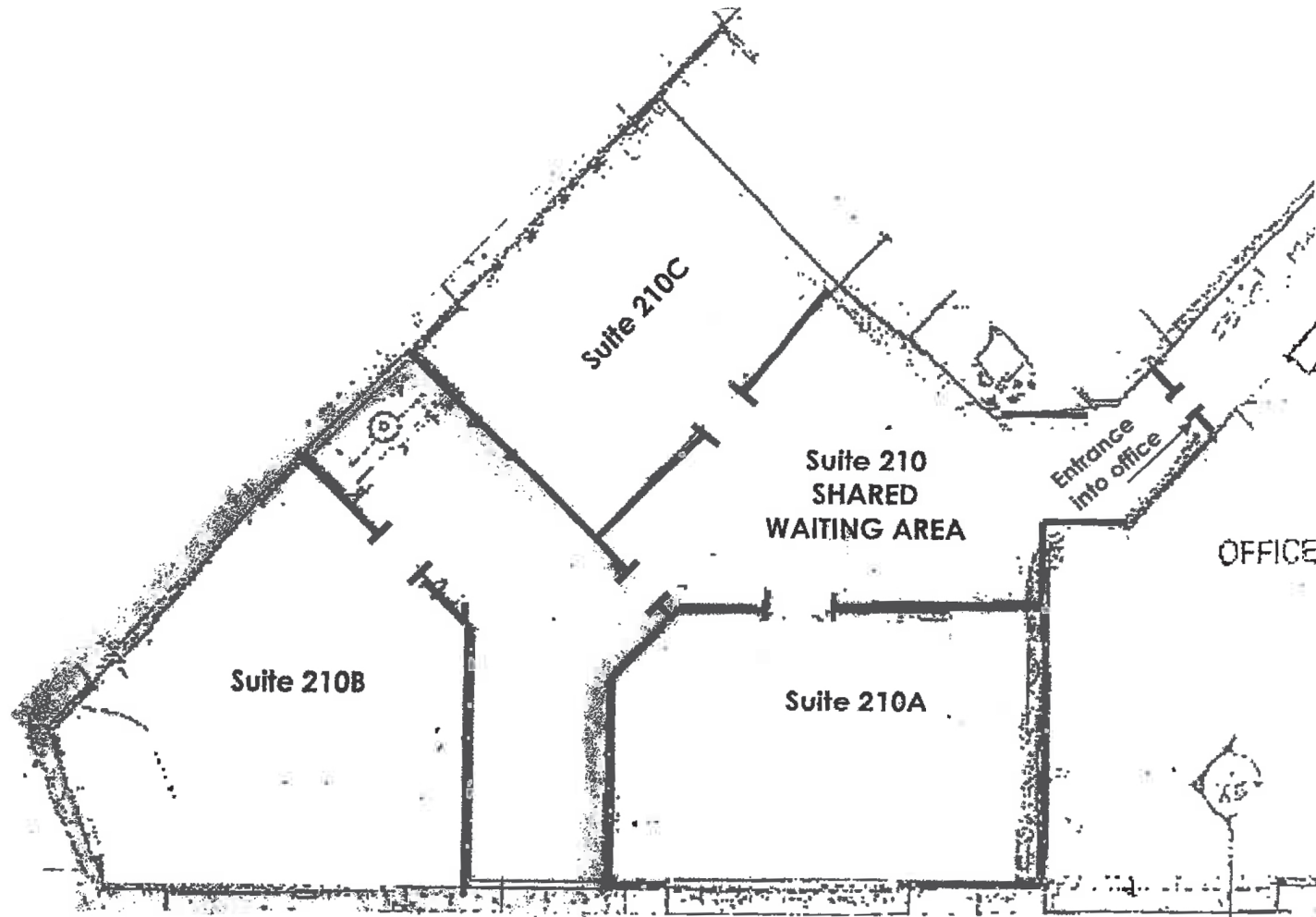
Richard Riley

206.695.4849

riley@ewingandclark.com

Floor Plan

4105 E. Madison Street, Seattle, WA 98112



FOR MORE INFORMATION PLEASE CONTACT:

EWING & CLARK

Richard Riley

206.695.4849

riley@ewingandclark.com