

261 Fifth Avenue

New York, NY 10016



At East 29th Street

Ground Floor 7,646 SF

(Not Divisible)

Mezzanine 1,590 SF - 5,763 SF

Lower Level 7,784 SF

Ground Floor 1,051 SF

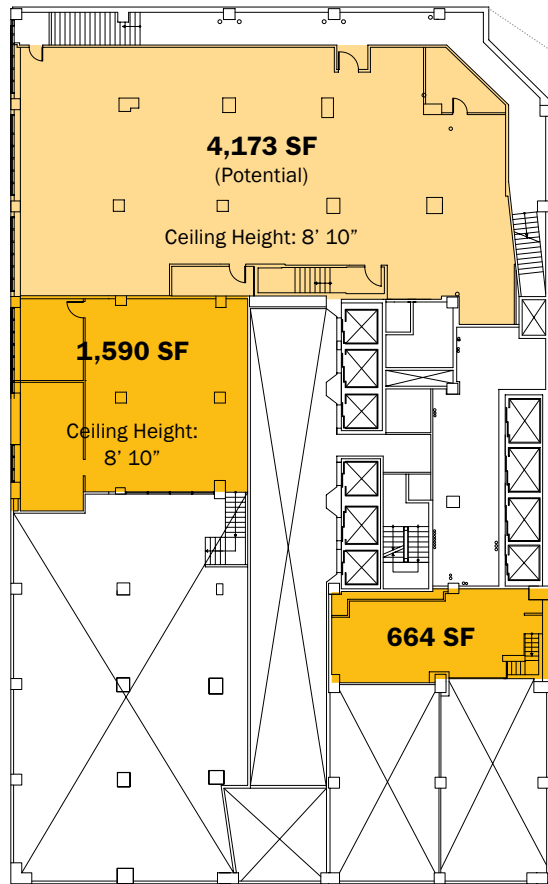
664 SF Mezzanine

- Located in Midtown South in the heart of the exciting “new” NoMad section
- Adjacent to Starbucks (at building)
- Area retailers include 24-Hour Fitness, Lacoste, Chase, Dunkin’ Donuts, Samsonite, M&T Bank, Red Mango, Subway, and Bank of America
- Located just south of the Empire State Building which boasts up to 20,000 tourists daily
- One block from the new 269-key boutique Ace Hotel, and near the Mave Hotel, Nomad Hotel, Hotel Chandler, Hotel Wolcott, and Avalon Hotel
- High foot traffic area on Fifth Avenue
- Near public transportation **N R 1 2 3 6**

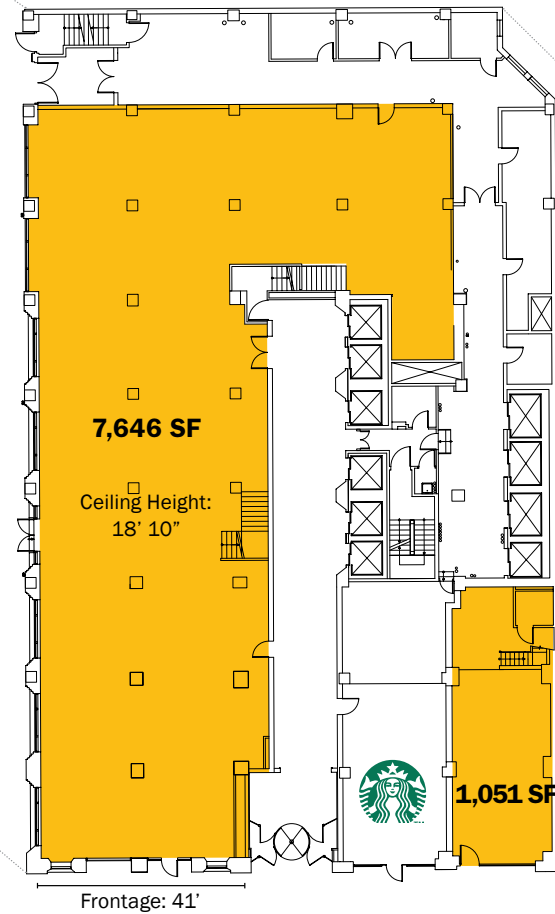


THE FEIL ORGANIZATION

MEZZANINE

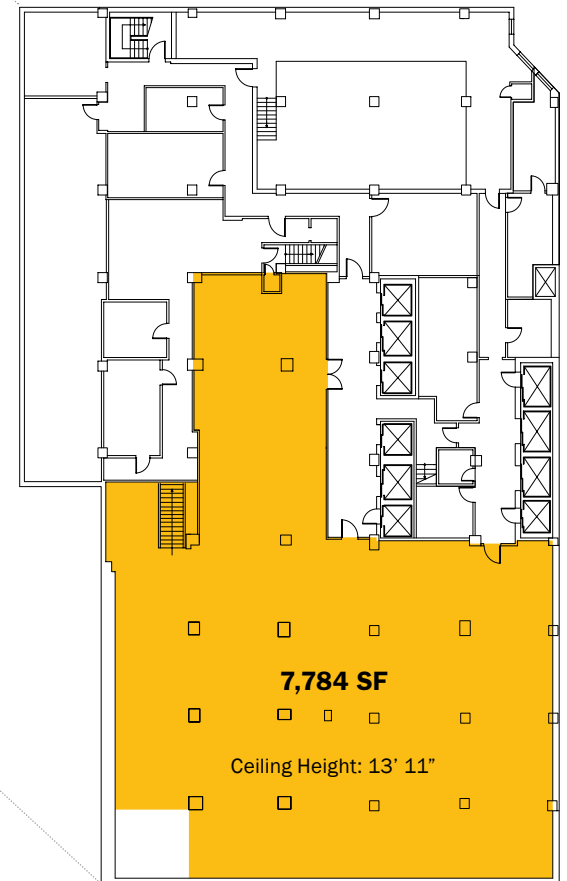


GROUND FLOOR



5TH AVENUE

LOWER LEVEL



For leasing information, please contact Randall Briskin X218 | rbriskin@feilorg.com or Nicholas Forelli X275 | nforelli@feilorg.com

THE FEIL ORGANIZATION 7 Penn Plaza, New York, NY 10001 T 212 563 6557 F 212 563 6657 www.feilorg.com