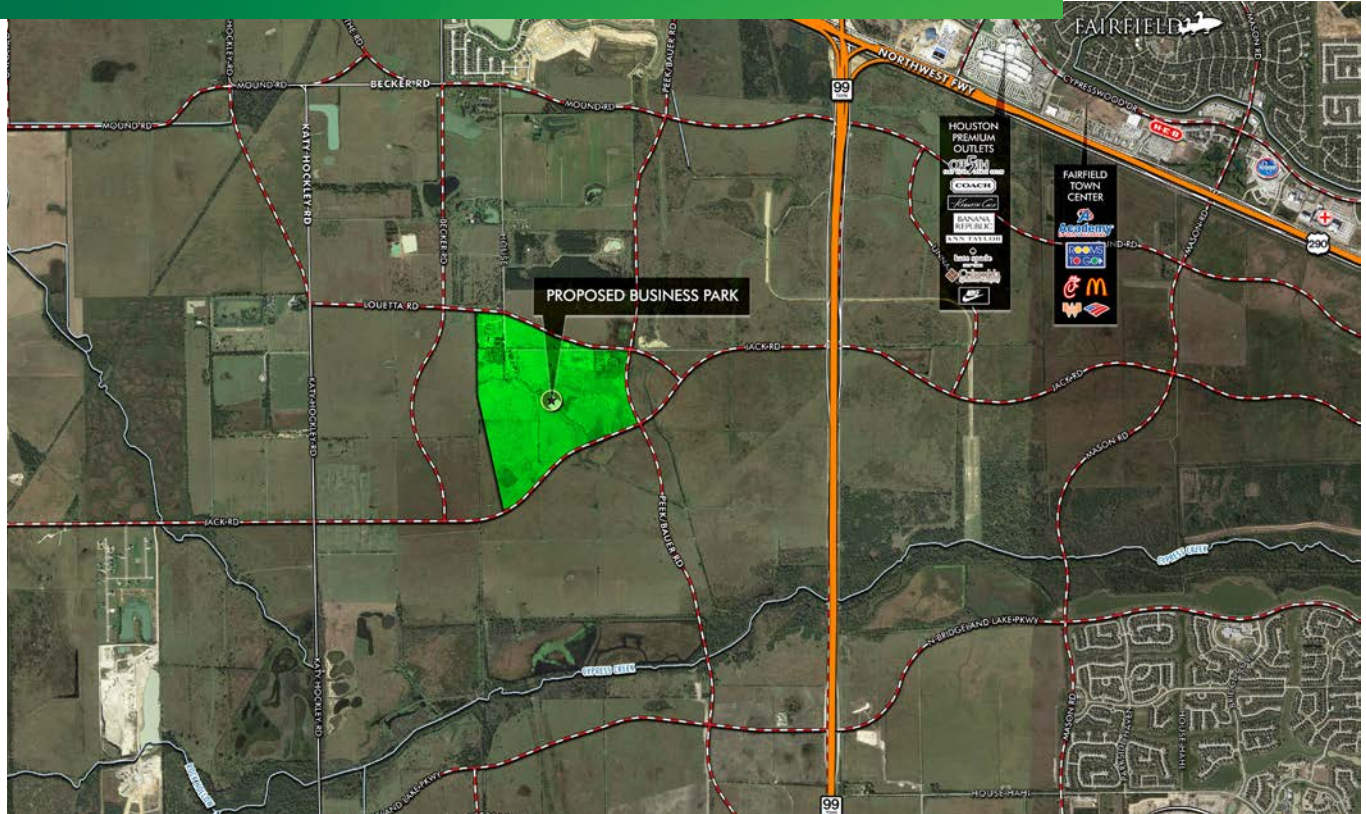


AVAILABLE FOR DEVELOPMENT

BRIDGELAND INDUSTRIAL PARK

CYPRESS, TX

GRAND PARKWAY (HIGHWAY 99) at LOUETTA ROAD



PROPERTY FEATURES

MASTER PLANNED INDUSTRIAL PARK
±235 ACRES TOTAL

- + Available for Development
- + First Exit on Grand Parkway, South of Highway 290
- + Located in Harris County
- + Deed Restricted
- + Offsite Storm Water Detention Provided
- + Sites from 10 Acres up
- + Foreign Trade Zone Application Pending



CONTACT US

BILL RUDOLF

+1 713 577 1727
william.rudolf@cbre.com

KYLE GOLDING

+1 713 577 1626
kyle.golding@cbre.com

BRIDGELAND

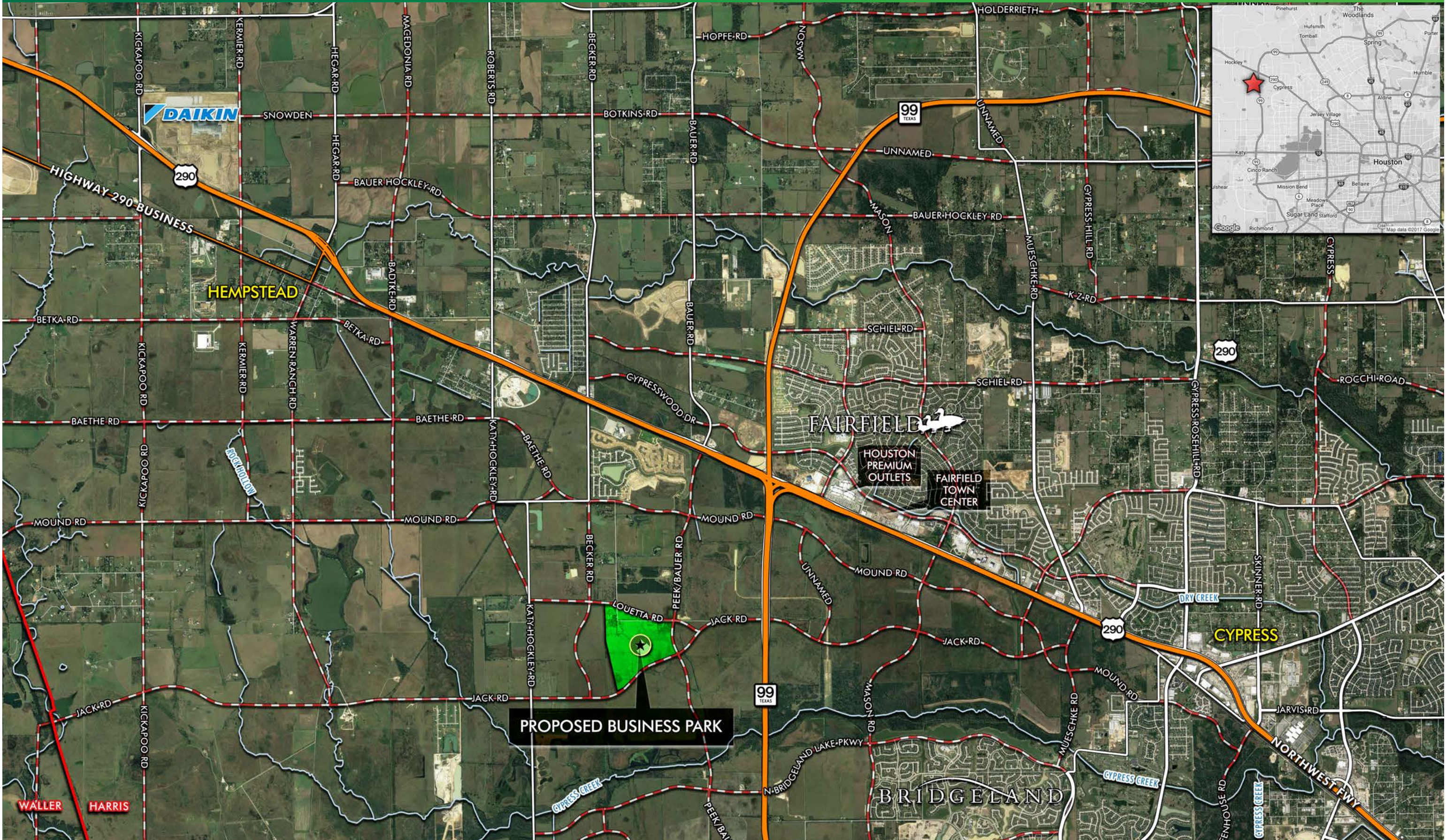
Howard Hughes
THE HOWARD HUGHES CORPORATION

www.cbre.com

CBRE

AVAILABLE FOR DEVELOPMENT
BRIDGELAND INDUSTRIAL PARK

CYPRESS, TX



AVAILABLE FOR DEVELOPMENT BRIDGELAND INDUSTRIAL PARK

MASTER PLAN



CONTACT US

BILL RUDOLF

+1 713 577 1727
william.rudolf@cbre.com

KYLE GOLDING

+1 713 577 1626
kyle.golding@cbre.com

BRIDGELAND

Howard Hughes
THE HOWARD HUGHES CORPORATION

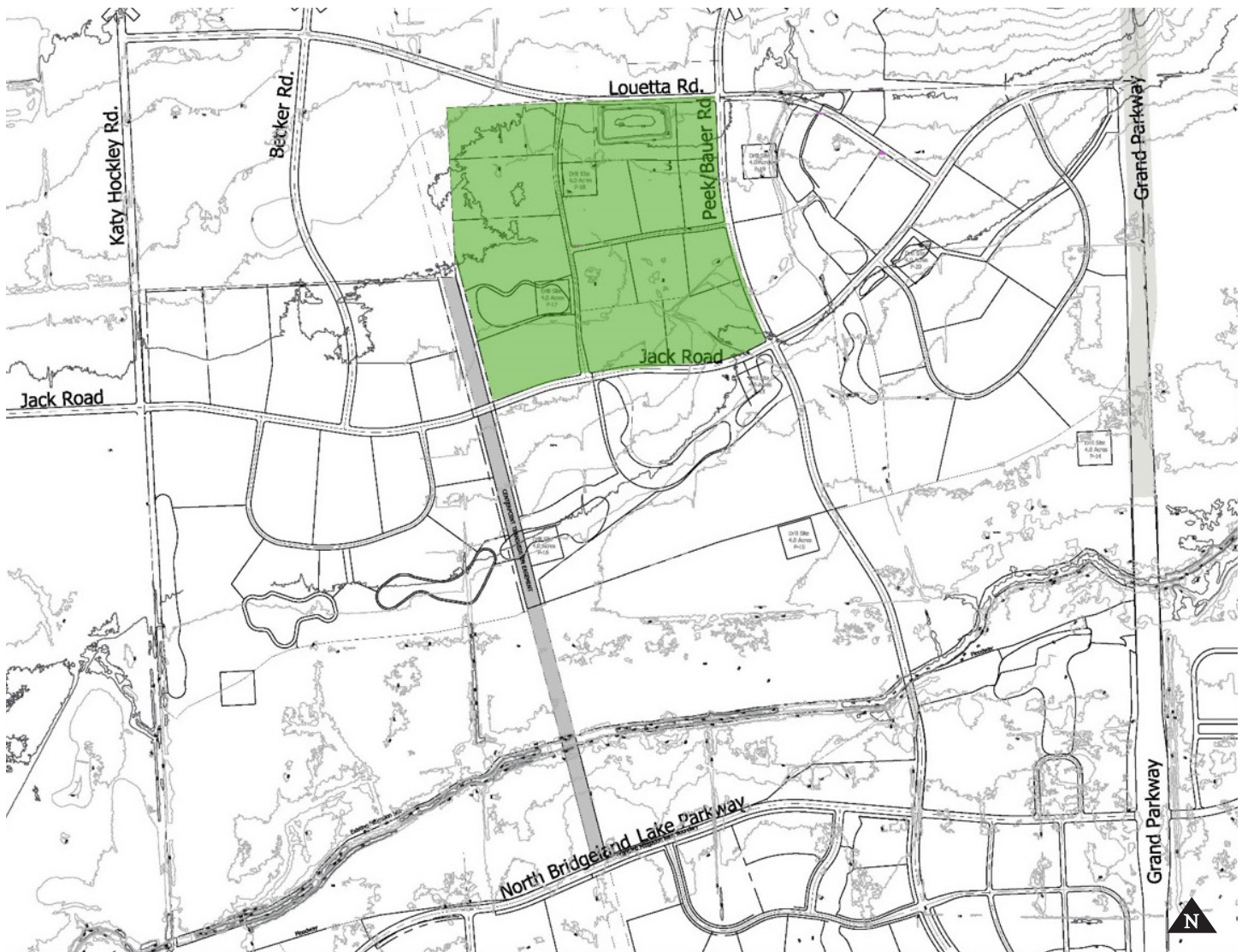
© 2018 CBRE, Inc. This information has been obtained from sources believed reliable. We have not verified it and make no guarantee, warranty or representation about it. Any projections, opinions, assumptions or estimates used are for example only and do not represent the current or future performance of the property. You and your advisors should conduct a careful, independent investigation of the property to determine to your satisfaction the suitability of the property for your needs. Photos herein are the property of their respective owners and use of these images without the express written consent of the owner is prohibited. CBRE and the CBRE logo are service marks of CBRE, Inc. and/or its affiliated or related companies in the United States and other countries. All other marks displayed on this document are the property of their respective owners.

www.cbre.com

CBRE

AVAILABLE FOR DEVELOPMENT BRIDGELAND INDUSTRIAL PARK

ALT A & B



CONTACT US

BILL RUDOLF

+1 713 577 1727
william.rudolf@cbre.com

KYLE GOLDING

+1 713 577 1626
kyle.golding@cbre.com

BRIDGELAND

Howard Hughes
THE HOWARD HUGHES CORPORATION

© 2018 CBRE, Inc. This information has been obtained from sources believed reliable. We have not verified it and make no guarantee, warranty or representation about it. Any projections, opinions, assumptions or estimates used are for example only and do not represent the current or future performance of the property. You and your advisors should conduct a careful, independent investigation of the property to determine to your satisfaction the suitability of the property for your needs. Photos herein are the property of their respective owners and use of these images without the express written consent of the owner is prohibited. CBRE and the CBRE logo are service marks of CBRE, Inc. and/or its affiliated or related companies in the United States and other countries. All other marks displayed on this document are the property of their respective owners.

www.cbre.com

CBRE

AVAILABLE FOR DEVELOPMENT BRIDGELAND INDUSTRIAL PARK

PARCEL PLAN



CONTACT US

BILL RUDOLF

+1 713 577 1727
william.rudolf@cbre.com

KYLE GOLDING

+1713 577 1626
kyle.golding@cbre.com

BRIDGELAND

Howard Hughes
THE HOWARD HUGHES CORPORATION

© 2018 CBRE, Inc. This information has been obtained from sources believed reliable. We have not verified it and make no guarantee, warranty or representation about it. Any projections, opinions, assumptions or estimates used are for example only and do not represent the current or future performance of the property. You and your advisors should conduct a careful, independent investigation of the property to determine to your satisfaction the suitability of the property for your needs. Photos herein are the property of their respective owners and use of these images without the express written consent of the owner is prohibited. CBRE and the CBRE logo are service marks of CBRE, Inc. and/or its affiliated or related companies in the United States and other countries. All other marks displayed on this document are the property of their respective owners.

www.cbre.com

CBRE