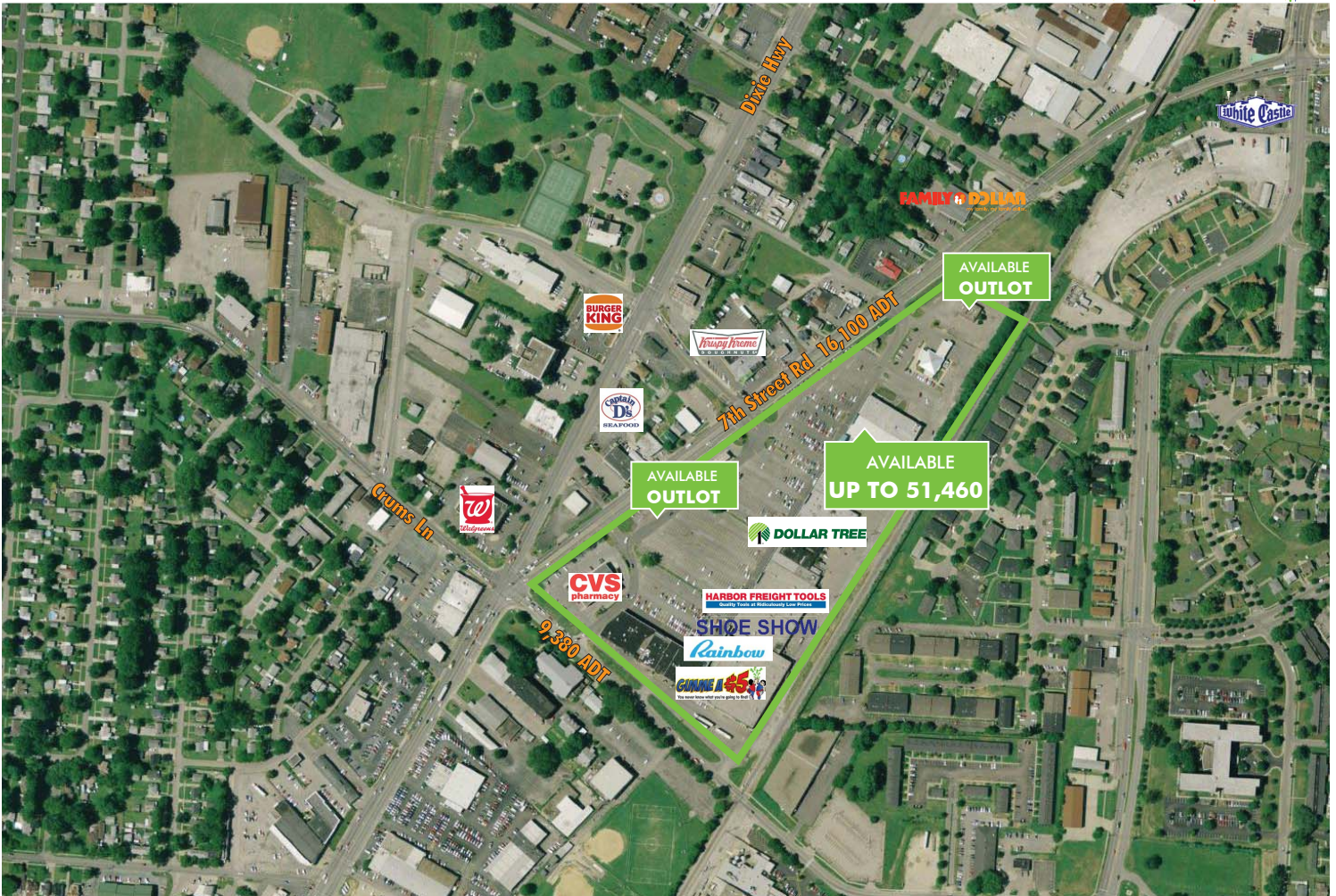


FOR LEASE

Southland Terrace

3923 S. SEVENTH STREET ROAD, LOUISVILLE, KENTUCKY

RETAIL



ANCHOR OPPORTUNITY

OUTLOT & INLINE SPACE AVAILABLE

- + Up to 51,460± SF available
- + Small shop space & outlots available
- + Tenants include Rainbow Shops, Harbor Freight Tools, Dollar Tree, & Shoe Show
- + Primary retail shopping center for the Shively area
- + Signalized entrance from S. Seventh Street Road with excellent visibility
- + Traffic count: 16,100 ADT on S. Seventh Street Rd; 9,380 ADT on Crums Lane

FOR LEASE

Southland Terrace

3923 S. SEVENTH STREET ROAD, LOUISVILLE, KENTUCKY

RETAIL



Southland Terrace
Louisville, KY

CONTACT US

Clay Hunt

Senior Associate
+1 502 412 7607
clay.hunt@cbre.com

Robert Schwartz

Senior Vice President
+1 502 412 7606
robert.schwartz@cbre.com

© 2019 CBRE, Inc. All rights reserved. This information has been obtained from sources believed reliable, but has not been verified for accuracy or completeness. You should conduct a careful, independent investigation of the property and verify all information. Any reliance on this information is solely at your own risk. CBRE and the CBRE logo are service marks of CBRE, Inc. All other marks displayed on this document are the property of their respective owners. Photos herein are the property of their respective owners. Use of these images without the express written consent of the owner is prohibited.