



City of Ocoee Water Systems Map

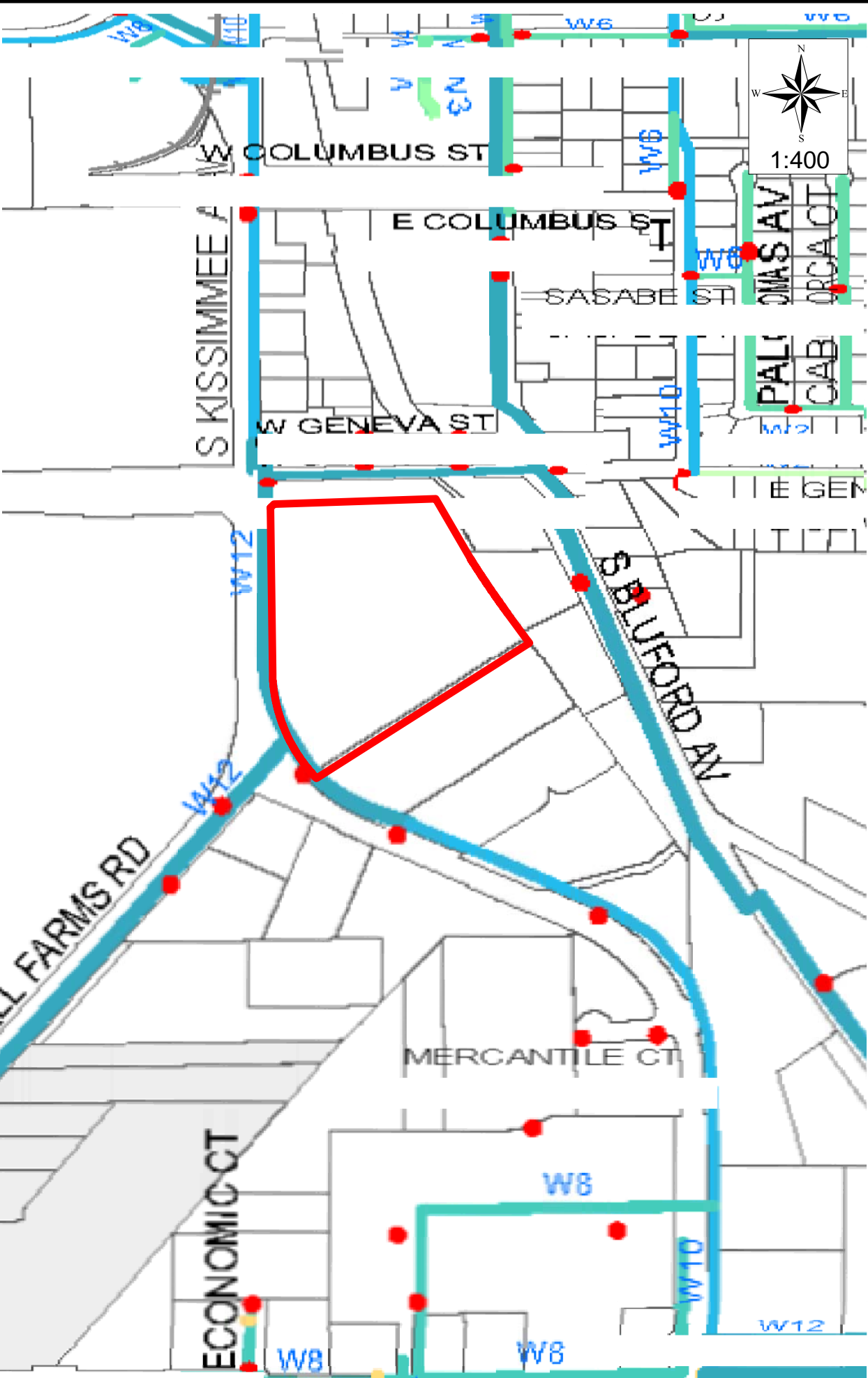
- Pipe Diameter:
- No Size Data
 - 2" Water Line
 - 3" Water Line
 - 4" Water Line
 - 6" Water Line
 - 8" Water Line
 - 10" Water Line
 - 12" Water Line
 - 14" Water Line
 - 16" Water Line
 - Hydrants
 - Water Treatment Facilities

- Lakes and Water Bodies
- Unincorporated Territory and Other Municipalities
- Utility Service Boundary
- Parcel Boundaries
- Right-of-Ways
- Rail Lines
- Township and Range Boundaries
- Section Markers

This map has been produced from the most accurate information available. The City of Ocoee is not responsible for any errors or omissions contained hereon.

Prepared by the City of Ocoee Support Services Department.
File: o:\gis\aprs\engineering\water map.mxd

Updated: March 2014



SUMMIT PROPERTY
CITY OF OCOEE, FLORIDA

- Legend
- PROPERTY BOUNDARY (+/- 9.93 acres)

Potable Water
Facilities Map



JALD W. MCINTY
ASSOCIATES, INC.
10000 W. US HWY 1
SUITE 100
FORT MYERS, FL 33907
(813) 938-0000 FAX (813) 938-0001

DON	JSH
CIVIL ENGINEER	SURVEYOR
22C	1TH
W	1B
PHONE: (407) 844-8318	