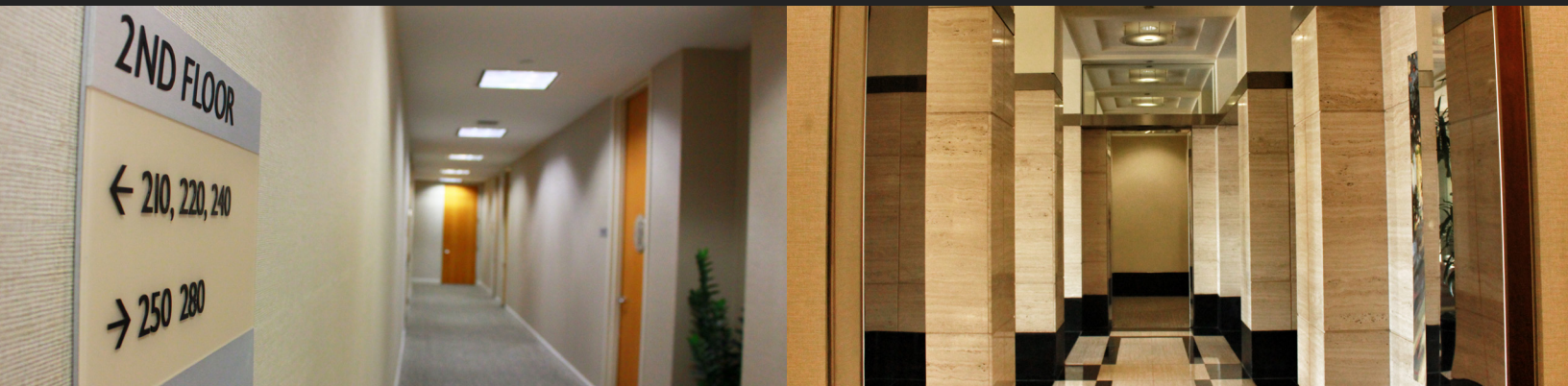


# VENTURE PLAZA



## FEATURES

- Class A five-story office building in prestigious Irvine Spectrum
- Versatile built-to-suit office space
- Contemporary finishes, high ceilings, and newly-refurbished common areas
- On-site day porter
- Free surface parking and paid reserved parking
- After-hours key card access
- Competitive lease rates
- Convenient to the Irvine Spectrum Center
- Nearby restaurants & other retail amenities
- Within close proximity of the I-5, I-405 and SR 133 freeways



FOR INFORMATION, PLEASE CONTACT

**Muna Abu-Sada**

Senior Leasing Director

949.719.7259

mabusada@olenproperties.com

2 VENTURE PLAZA

2 Venture Plaza • Irvine • CA 92618

[www.2ventureplaza.com](http://www.2ventureplaza.com) • [www.olenproperties.com](http://www.olenproperties.com)

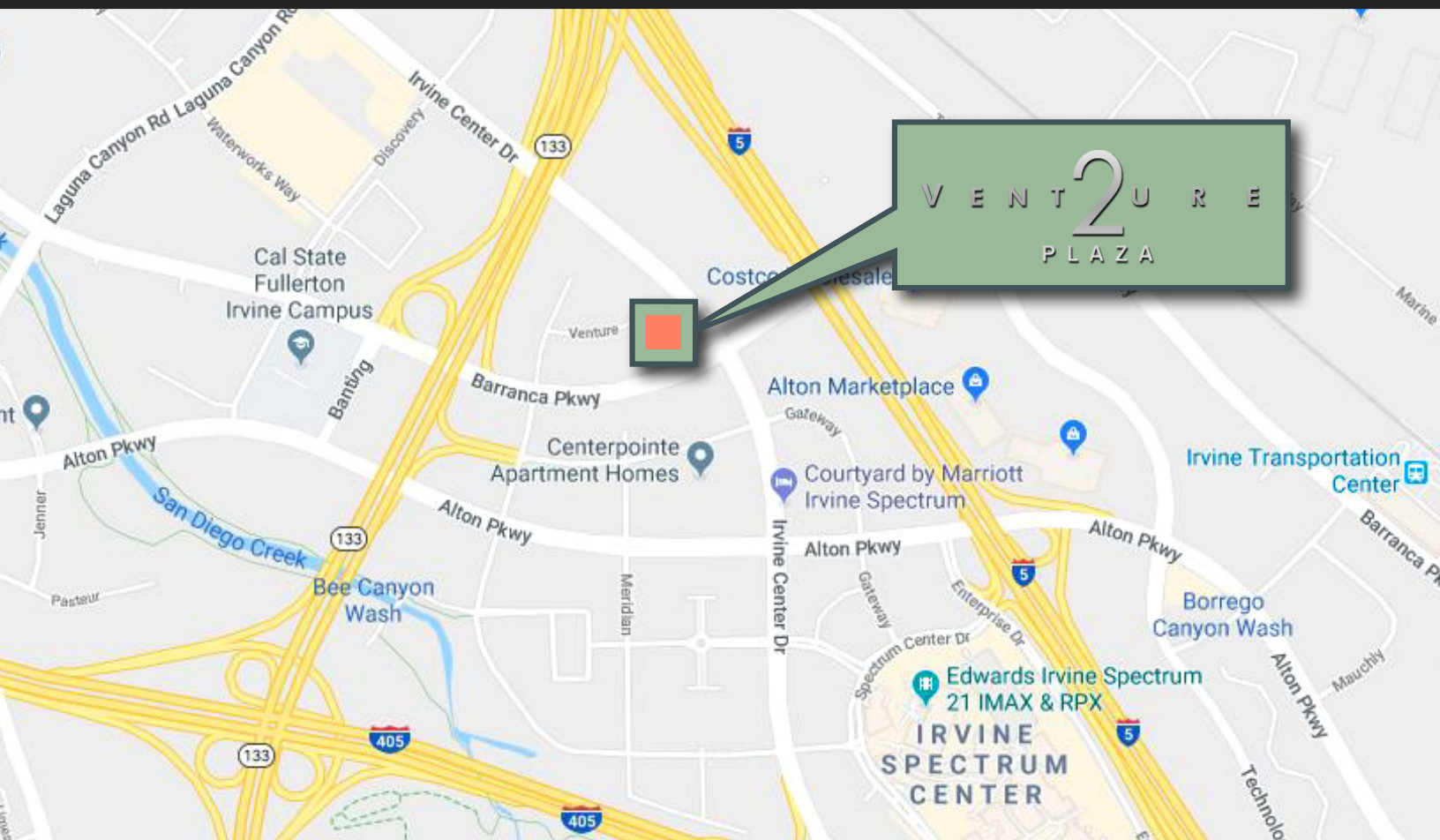
No warranty of representation, express or implied, is made as to the accuracy of the information contained herein, and same is submitted subject to errors, omissions, change of price, rental or other conditions, withdrawal without notice, and to any special listing conditions imposed by our principals





# VENTURE PLAZA

2 Venture Plaza • Irvine • CA



FOR INFORMATION, PLEASE CONTACT

**Muna Abu-Sada**

Senior Leasing Director

949.719.7259

mabusada@olenproperties.com

2 VENTURE PLAZA

2 Venture Plaza • Irvine • CA 92618

[www.2ventureplaza.com](http://www.2ventureplaza.com) • [www.olenproperties.com](http://www.olenproperties.com)

No warranty of representation, express or implied, is made as to the accuracy of the information contained herein, and same is submitted subject to errors, omissions, change of price, rental or other conditions, withdrawal without notice, and to any special listing conditions imposed by our principals

