

1101

CONNECTICUT

**NEWLY RENOVATED
BUILDING IN THE
HEART OF DC**



1101

1101

1101

AVAILABILITY

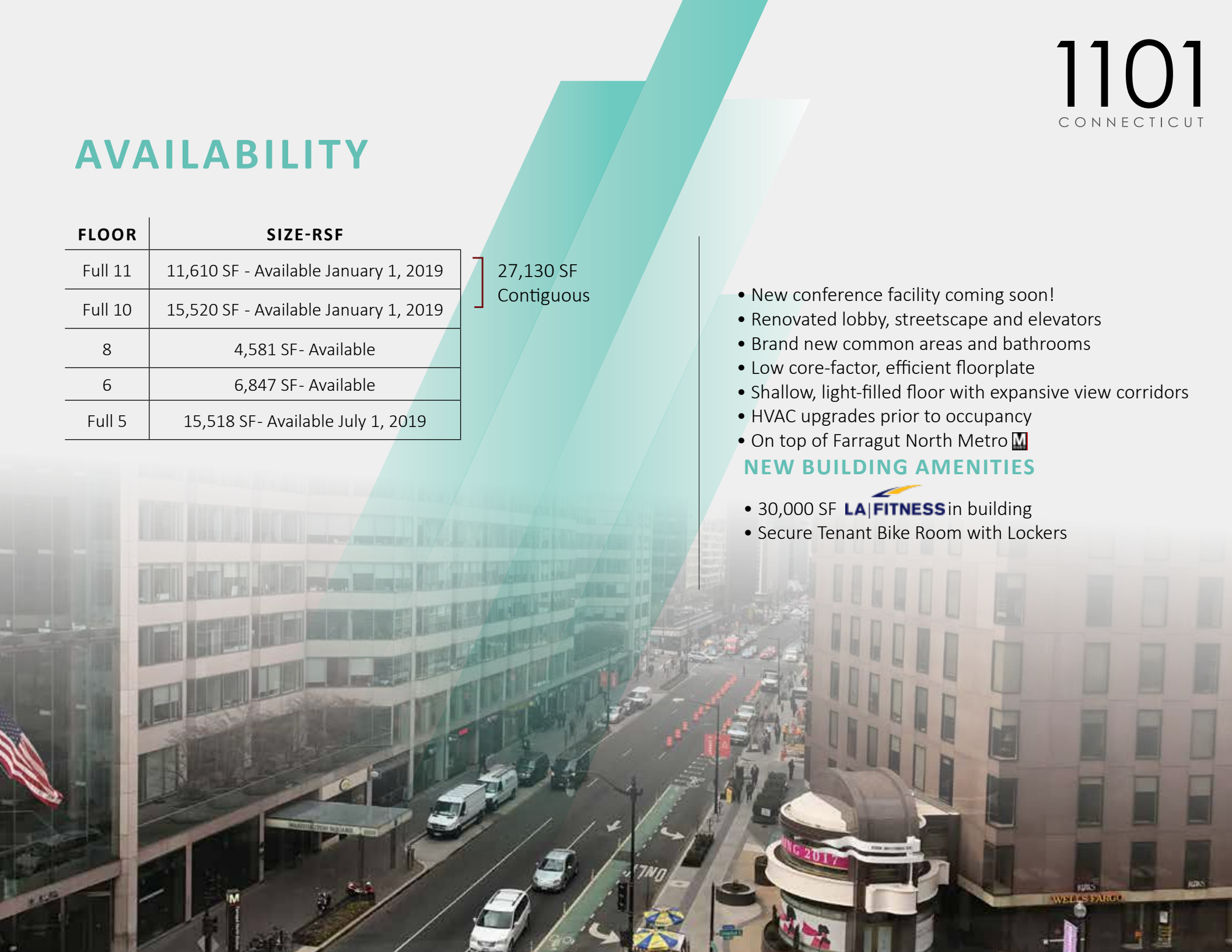
FLOOR	SIZE-RSF
Full 11	11,610 SF - Available January 1, 2019
Full 10	15,520 SF - Available January 1, 2019
8	4,581 SF- Available
6	6,847 SF- Available
Full 5	15,518 SF- Available July 1, 2019

27,130 SF
Contiguous

- New conference facility coming soon!
- Renovated lobby, streetscape and elevators
- Brand new common areas and bathrooms
- Low core-factor, efficient floorplate
- Shallow, light-filled floor with expansive view corridors
- HVAC upgrades prior to occupancy
- On top of Farragut North Metro 

NEW BUILDING AMENITIES

- 30,000 SF  in building
- Secure Tenant Bike Room with Lockers



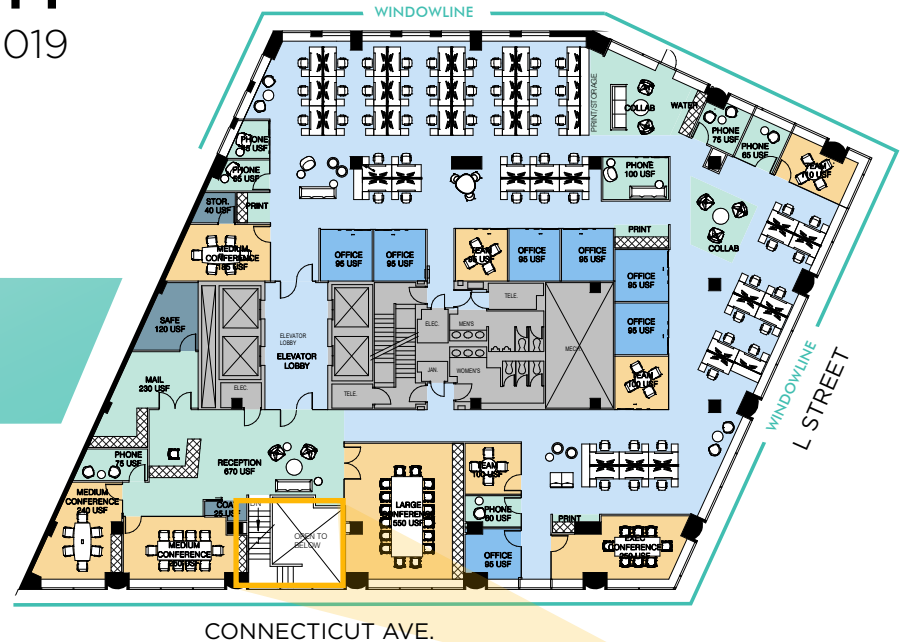
UPPER FLOOR AVAILABILITY

Coming January 1, 2019

11th FLOOR Hypothetical Plan

11,610 RSF

9	CONFERENCE ROOM
7	PHONE ROOMS
7	OFFICE
3	STORAGE
54	WORKSTATION



10th FLOOR Hypothetical Plan

15,520 RSF



9	CONFERENCE ROOM
8	PHONE ROOMS
9	OFFICE
3	STORAGE
76	WORKSTATION

Existing inter-connecting staircase between floors 10 & 11

CONTIGUOUS
UP TO
27,130 RSF

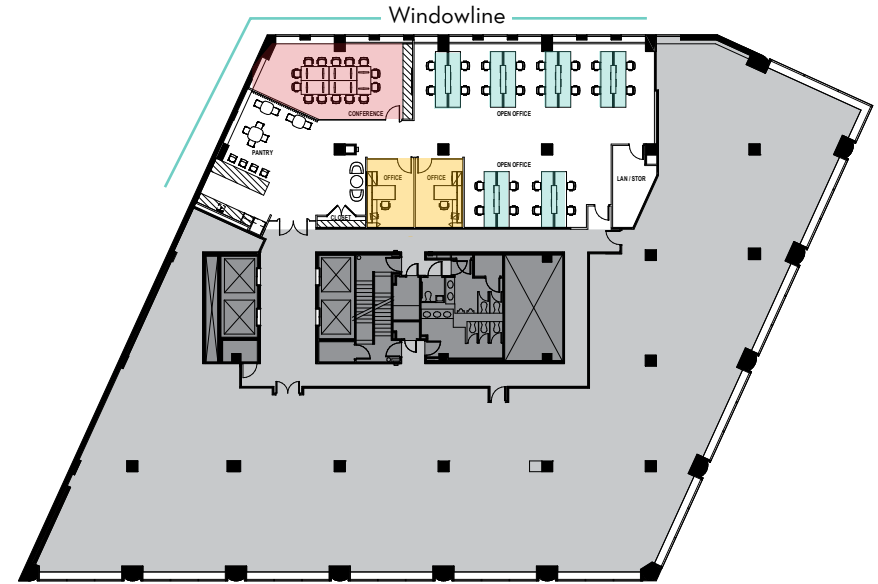
CONNECTICUT AVE

8th FLOOR

Brand new Spec Suite
delivering Q1 2019!

4,581 RSF

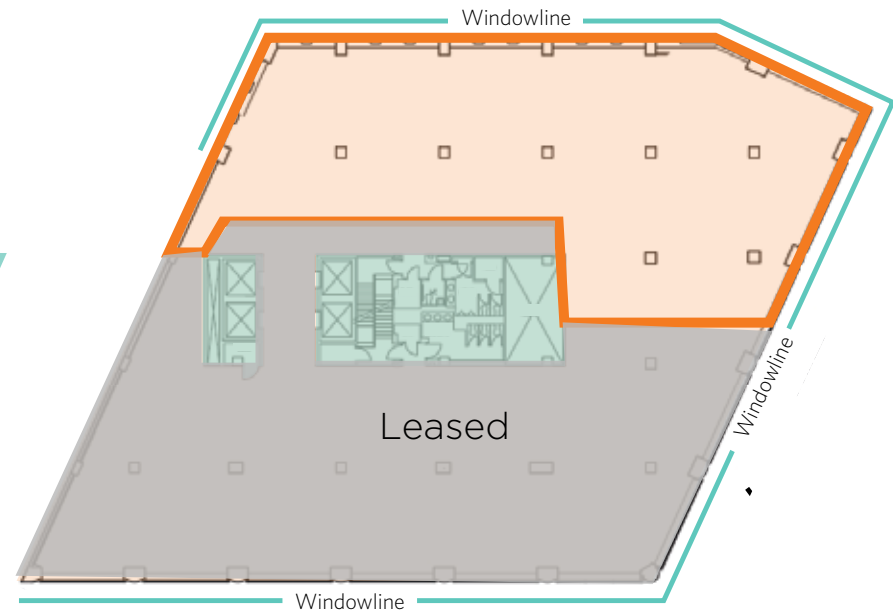
- 2 Offices
- 14-person Conference
- 24 Workstations
- Open Pantry Reception
- Direct Elevator Exposure



6th FLOOR

Shell condition
Available Now

6,847 RSF





5th FLOOR

Full Floor Coming Available July 2019
Hypothetical Plan

15,518 RSF



View South to Farragut Square



1101

CONNECTICUT

FOR MORE INFORMATION:

CARROLL CAVANAGH

+1 202 585 5586
carroll.cavanagh@cbre.com

MARK KLUG

+1 202 585 5551
mark.klug@cbre.com

EMILY EPPOLITO

+1 202 585 5695
emily.eppolito@cbre.com

DIMITRI HAJIMIHALIS

+1 202 585 5611
dimitri.hajimihalisi @cbre.com

