

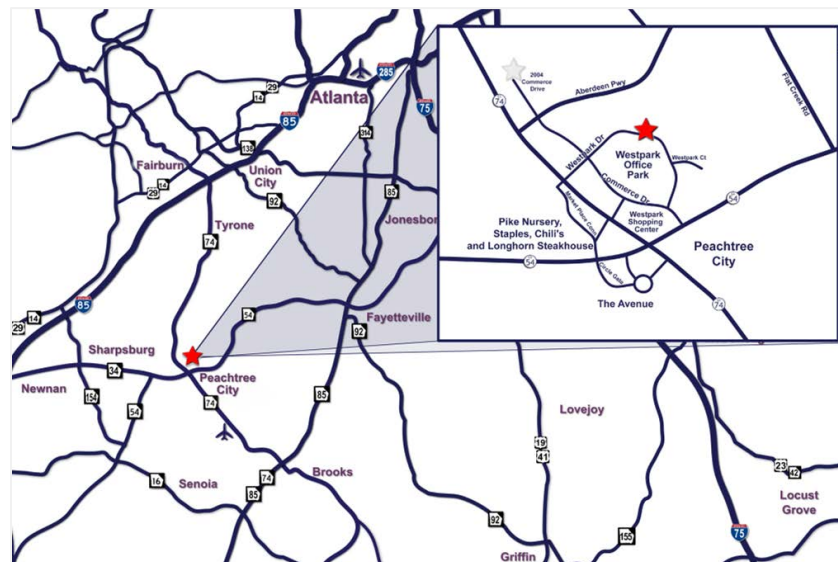
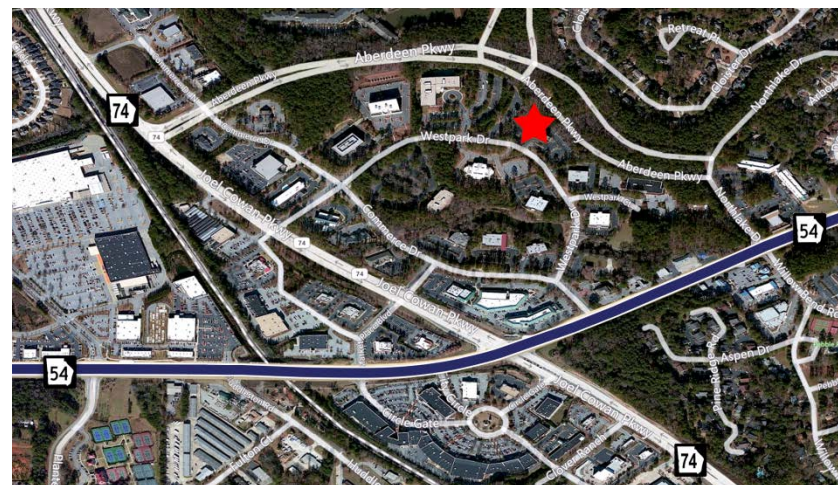
# OFFICE SPACE FOR LEASE

900 Westpark Drive, Suite 310, Peachtree City, GA



## Property Profile

- +/- 1,678 RSF Available
- Lease Rate: Inquire
- 36,000 SF, 3-Story Class "A" Office Building
- High-speed Internet access and digital communications
- Easy access to GA Hwy 54 and 74 and I-85
- Beautifully landscaped and maintained grounds
- Adjacent to retail, restaurants and high-end residential
- Year Built: 2000
- County: Fayette
- Parking Ratio: 4/1,000
- City: Peachtree City



For more information please contact:  
**Brent Randolph** Cell: 770.318.6815

770.632.4000 | [rwcre.net](http://rwcre.net)  
900 Westpark Drive, Suite 300 | Peachtree City, GA 30269

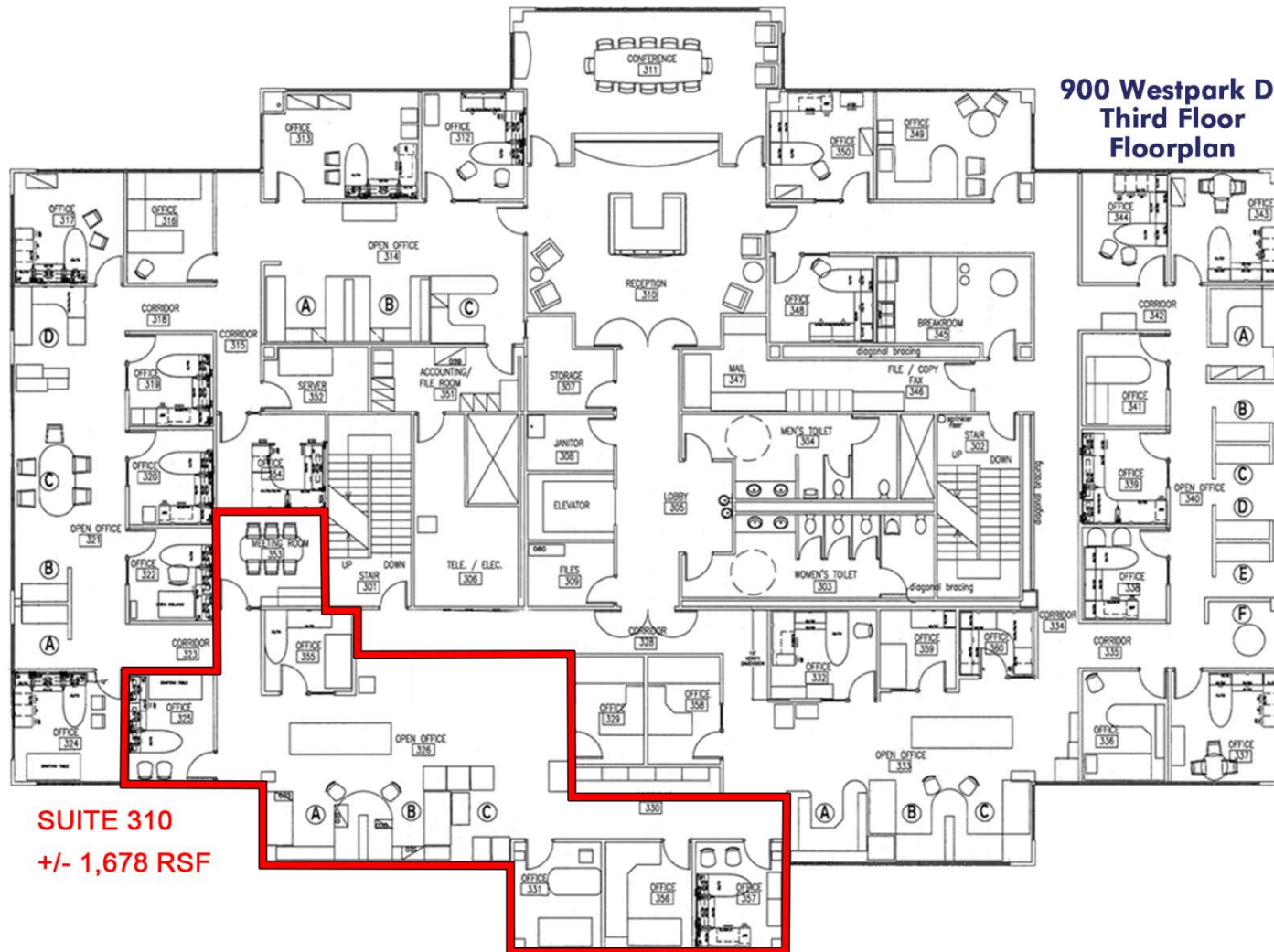
This information has been obtained from sources believed reliable. While we do not doubt its accuracy we have not verified it and make no guarantee, warranty or representation about it.

900 Westpark Drive, Suite 310, Peachtree City, GA



Randolph  
Williamson

**900 Westpark Dr  
Third Floor  
Floorplan**



For more information please contact:  
**Brent Randolph** Cell: 770.318.6815

770.632.4000 | [rwcre.net](http://rwcre.net)

900 Westpark Drive, Suite 300 | Peachtree City, GA 30269

This information has been obtained from sources believed reliable. While we do not doubt its accuracy we have not verified it and make no guarantee, warranty or representation about it.