



## **FOR LEASE OR SALE**

---

**2140 & 2144 - BUFORD HIGHWAY - BUFORD - GA - 30518**

---

### **FULL SERVICE OFFICE AVAILABLE IN BUFORD**



[WWW.NORTONCOMMERCIAL.COM](http://WWW.NORTONCOMMERCIAL.COM)

#### **VARIETY OF PROFESSIONAL & MEDICAL OFFICE ON BUFORD HIGHWAY**

- ◆ Multiple suites available from approx. 2000 SF to 4200 SF
- ◆ Great location on Buford Highway with signage and easy access I-985
- ◆ Full Service, turnkey lease that is user friendly for tenant
- ◆ Ideal space for general business, professional services or medical tenants

#### **CONTACT**

**STEPHEN REYNOLDS**

**770.718.5117**

***SREYNOLDS@NORTONCOMMERCIAL.COM***



## FOR LEASE OR SALE

2140 & 2144 - BUFORD HIGHWAY - BUFORD - GA - 30518

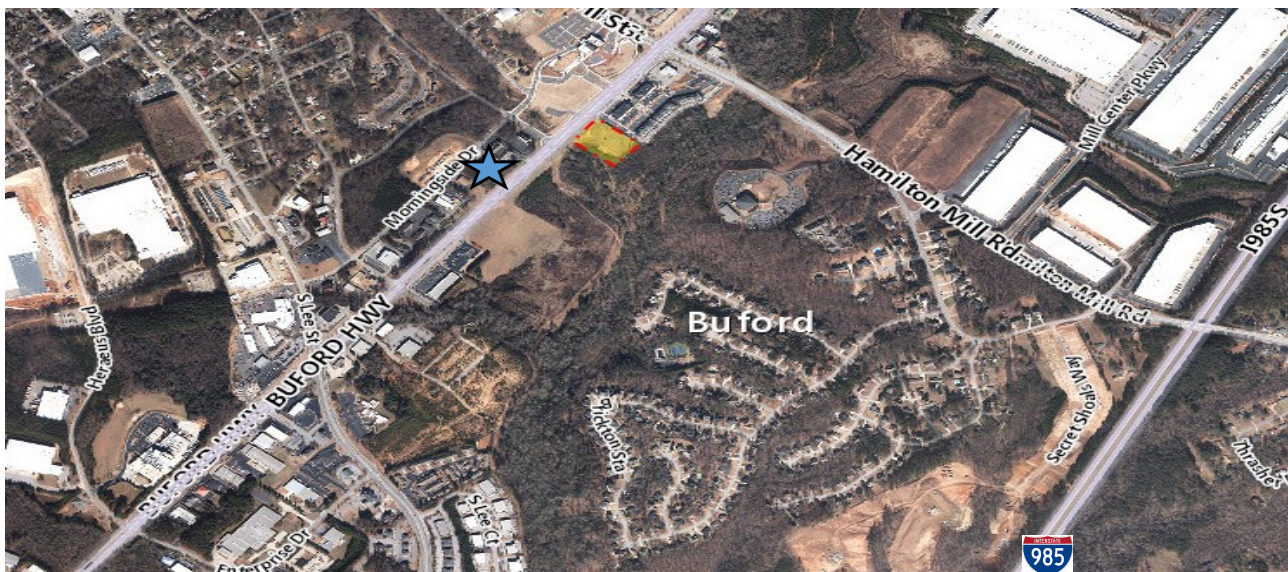
### OFFICE SUITES AVAILABLE

ADDRESS	SUITE	SIZE	TYPE	RATE/SF	LEASE TYPE	TERM
2140 Buford Highway	108	2350 SF	Office-Med	\$16.00	Full Service	Negotiable
2140 Buford Highway	109	1950 SF	Office-Med	\$16.00	Full Service	Negotiable
2140 Buford Highway	208	2150 SF	Office-Gen	\$15.00	Full Service	Negotiable
2144 Buford Highway	110	4265 SF	Office-Gen	\$14.00	Full Service	Negotiable

### BUILDINGS FOR SALE:

These two 9000 SF office buildings located on Buford Highway in Buford are for sale. They are very professional and well maintained buildings. There are multiple suites in each building with varying layouts from 2000 SF to over 4000 SF. There is ample parking with both of these buildings.

**Purchase Price: \$875,000/ building**







## FOR LEASE OR SALE

---

**2140 & 2144 - BUFORD**

---



2144 Buford Highway Building



Building 2144, Suite 110



Building 2140, Suite 208



Building 2140, Suite 108



Building 2140, Suite 108

### CONTACT

**STEPHEN REYNOLDS**

**770.718.5117**

***SREYNOLDS@NORTONCOMMERCIAL.COM***