

LIZOTTE

AND ASSOCIATES REAL ESTATE INC



PROPERTY HIGHLIGHTS

SMALL SECOND FLOOR OFFICE

#205, 12907-97 STREET, EDMONTON, AB

FOR LEASE

SUITE #205:

- 580 SQ.FT. (+/-) OFFICE SPACE
- 1 LARGE OFFICE WITH BAY WINDOW FACING 97 STREET
- SMALLER OFFICE PLUS FILE OR STORAGE ROOM
- SMALL RECEPTION AREA
- AIR CONDITIONING

780.488.0888

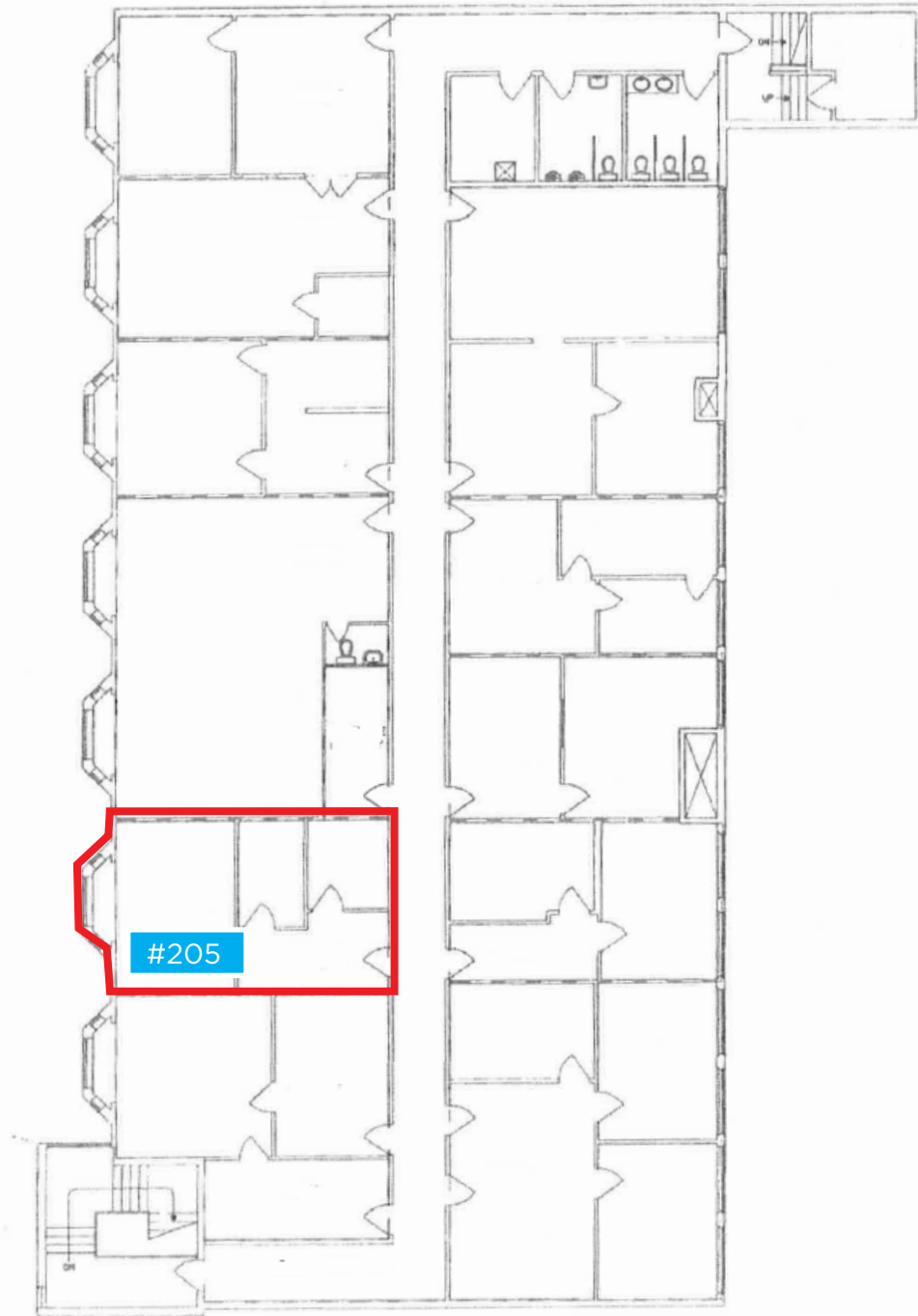
WWW.LIZOTTEREALESTATE.COM

#1201, 10117 JASPER AVENUE, EDMONTON, AB T5J 1W8

FOR LEASE

SMALL SECOND FLOOR OFFICE

FLOOR PLAN



LIZOTTE
AND ASSOCIATES REAL ESTATE INC

No warranty or representation, expressed or implied, is made as to the accuracy of the information contained herein, and same is submitted subject to errors, omissions, change of price, rental or other conditions, withdrawal without notice, and to any specific listing condition, imposed by our principals.

780.488.0888

WWW.LIZOTTEREALESTATE.COM

#1201, 10117 JASPER AVENUE, EDMONTON, AB T5J 1W8

FOR LEASE

SMALL SECOND FLOOR OFFICE

PROPERTY HIGHLIGHTS

ADDRESS: #205, 12907-97 Street, Edmonton, AB

LEGAL: Plan 3907AH, Block 24, Lots 25-28

LEASE SPACE: 580 Sq.Ft. (+/-)

LEASE RATE: \$8.00/Sq.Ft. Net

OP.COSTS: \$10.20/Sq.Ft. (est. 2018); incl. utilities

POSSESSION: Immediate

ADDITIONAL DETAILS:

- Excellent signage opportunity
- High traffic route; bus stops

MORE INFORMATION

NORA LIZOTTE

ASSOCIATE BROKER

Cell: 780.499.9001

Direct: 780.784.5356

Fax: 780.483.2277

nlizotte@lizotterealestate.com

ROSS LIZOTTE

ASSOCIATE BROKER

Cell: 780.887.8588

Direct: 780.784.5359

Fax: 780.483.2277

rlizotte@lizotterealestate.com



#205, 12907-97 STREET

128 AVENUE

127 AVENUE

LIZOTTE
AND ASSOCIATES REAL ESTATE INC

No warranty or representation, expressed or implied, is made as to the accuracy of the information contained herein, and same is submitted subject to errors, omissions, change of price, rental or other conditions, withdrawal without notice, and to any specific listing condition, imposed by our principals.

780.488.0888

WWW.LIZOTTEREALESTATE.COM

#1201, 10117 JASPER AVENUE, EDMONTON, AB T5J 1W8