

8403-G Benjamin Rd., Tampa, 33634

FOR LEASE



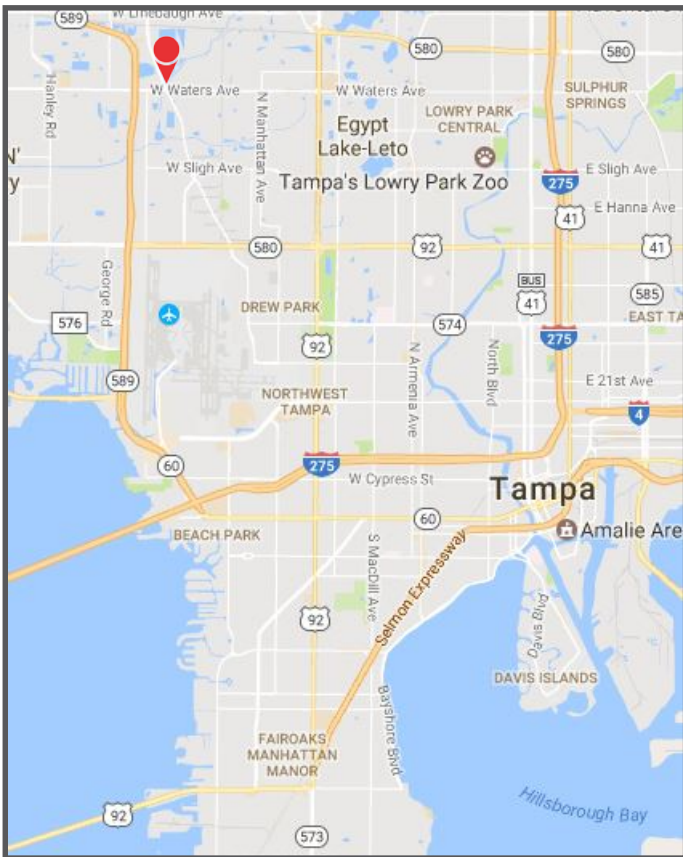
4/1,000  
PARKING  
RATIO

4,038  
AVAILABLE SQ.FT.

Northport

ASKING RENT: \$13 NNN/SQ.FT.

PROPERTY HIGHLIGHTS



**PARK AMENITIES**

Property management office located on near by campus. Close proximity, and within walking distance, to numerous hotels, restaurants, mall and retail shops.



**TRANSPORTATION**

Quick access to the Veterans Expressway, I-275 & Dale Mabry Highway. 10 minutes to Tampa Int'l Airport. HART stops in front of the business park.



**TECHNOLOGY**

Spectrum and FiberNet.



**SUSTAINABILITY**

Recycling receptacles on-site.



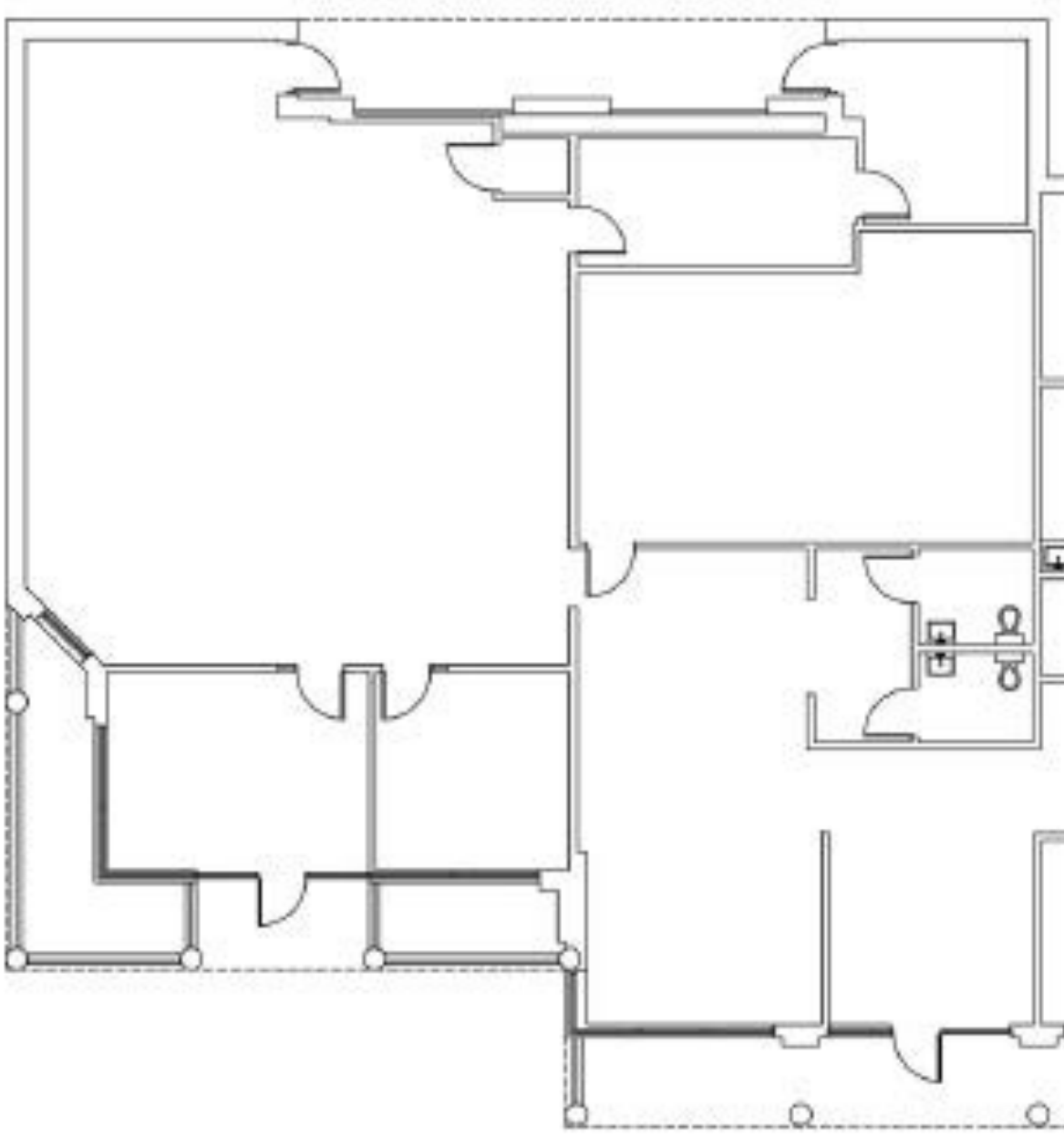
**WORKSPACE PROPERTY TRUST (WPT)**

Workspace Property Trust locally owns, manages, and leases 41 buildings consisting of 1.8 million square feet of office and office-flex properties in 5 business parks. The Tampa West Portfolio includes Woodland Corporate Center and Northport, while the Tampa East Portfolio includes Legacy Park, Silo Bend, and Crosspointe I and II.

**4,038**

AVAILABLE SQ. FT.

- One -story flex/office building
- Office or air conditioned warehouse
- Grade level loading with 13' doors
- Tenant pays own electric and janitorial
- \$3.68/SF Estimated Operating Expenses



4631 Woodland Corporate Blvd.  
Suite 209  
Tampa, FL 33614  
[www.workspaceproperty.com](http://www.workspaceproperty.com)

VICE PRESIDENT, REGIONAL DIRECTOR  
Jeff Lanning  
O 813.889.3733  
C 813.928.3142  
[jlanning@workspaceproperty.com](mailto:jlanning@workspaceproperty.com)

FOLLOW US ON



@workspacepropertytrust

**LEASING  
INFORMATION**