

FOR LEASE

Harford County, Maryland

2015 EMMORTON ROAD

BEL AIR, MARYLAND 21015

AVAILABLE

First Floor - Office/Retail

2,619 sf (including canopy signage)

Second Floor - Office

Suite 201: 1,938 sf* (former dental suite)

Suite 202: 1,836 sf*

*Contiguous up to 3,774 sf

PARKING

4: 1,000 sf

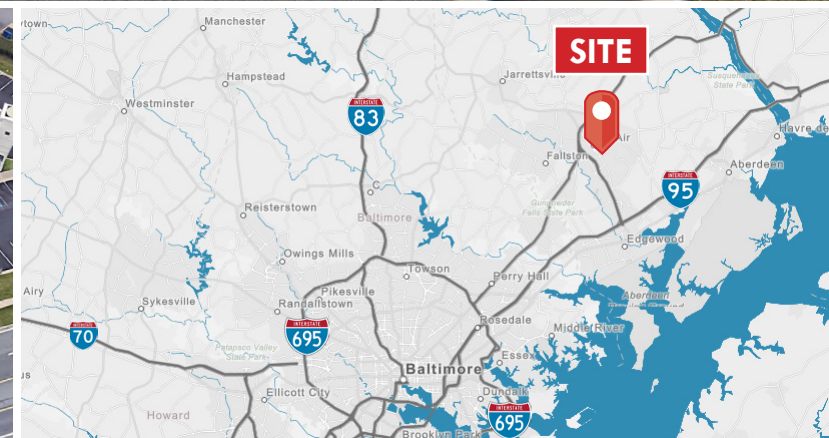
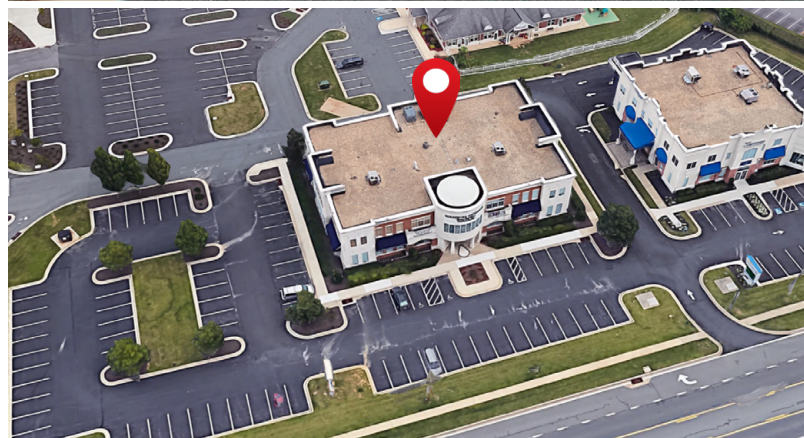
RENTAL RATE

Retail: \$22.50/sf, NNN

Office: \$18.00/sf, NNN

HIGHLIGHTS

- ▶ Class A retail and office space available in prime Bel Air location
- ▶ Signage available on building pylon sign along Route 924
- ▶ Close proximity to Upper Chesapeake Medical Center
- ▶ Upscale finishes including marble in lobby and coffered ceilings
- ▶ Easy access to I-95, Route 40, and Route 1
- ▶ New parking lot and professional landscaping



FOR LEASE

Harford County, Maryland

AREA AMENITIES

2015 EMMORTON ROAD | BEL AIR, MARYLAND 21015



FOR LEASE

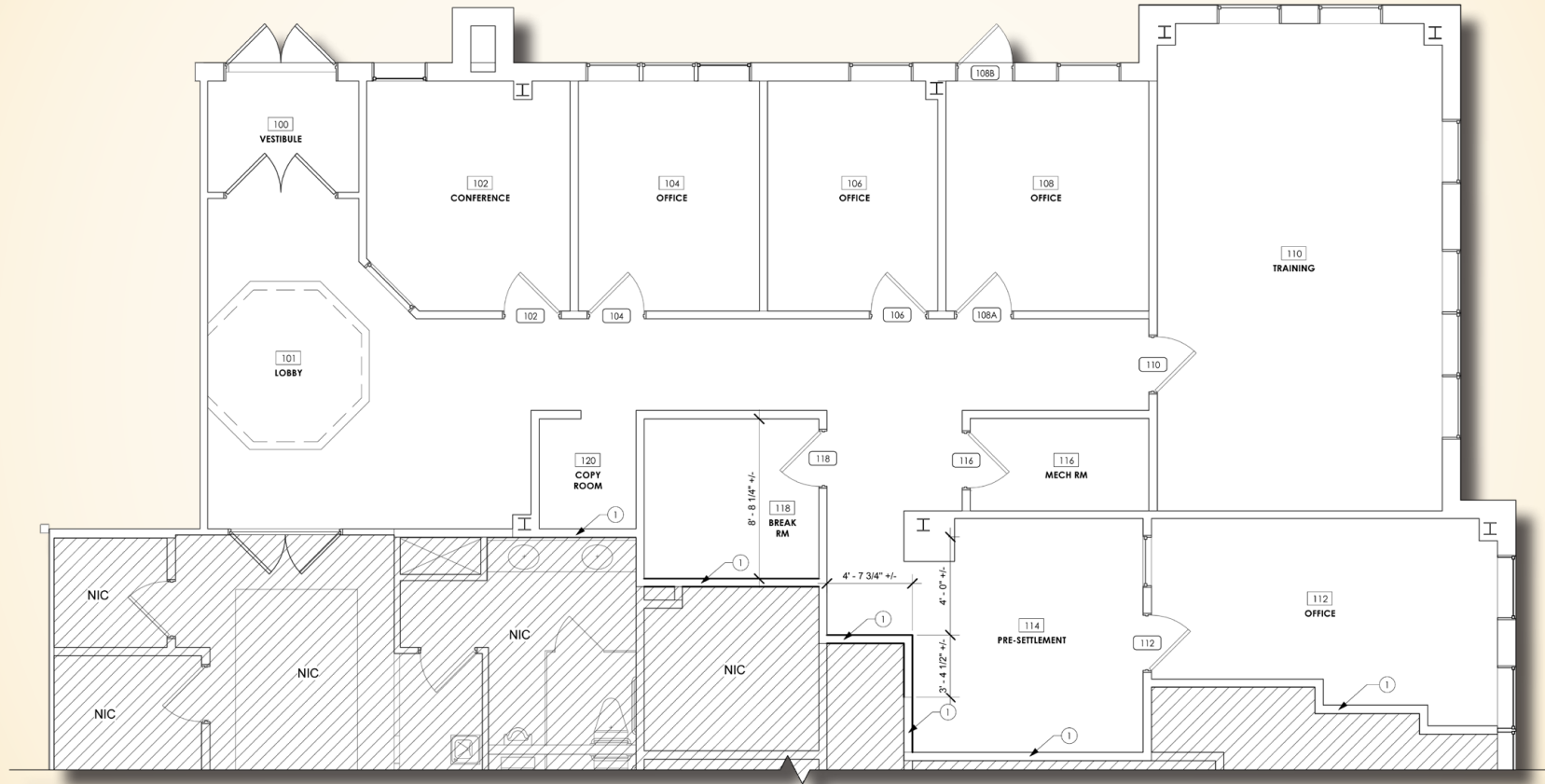
Harford County, Maryland

FLOOR PLAN

2015 EMMORTON ROAD | BEL AIR, MARYLAND 21015

FIRST FLOOR

2,619 SF (BUILDING CANOPY SIGNAGE AVAILABLE)



FOR LEASE

Harford County, Maryland

FLOOR PLAN

2015 EMMORTON ROAD | BEL AIR, MARYLAND 21015

SECOND FLOOR

1,836 SF - 3,774 SF

