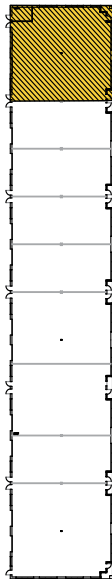
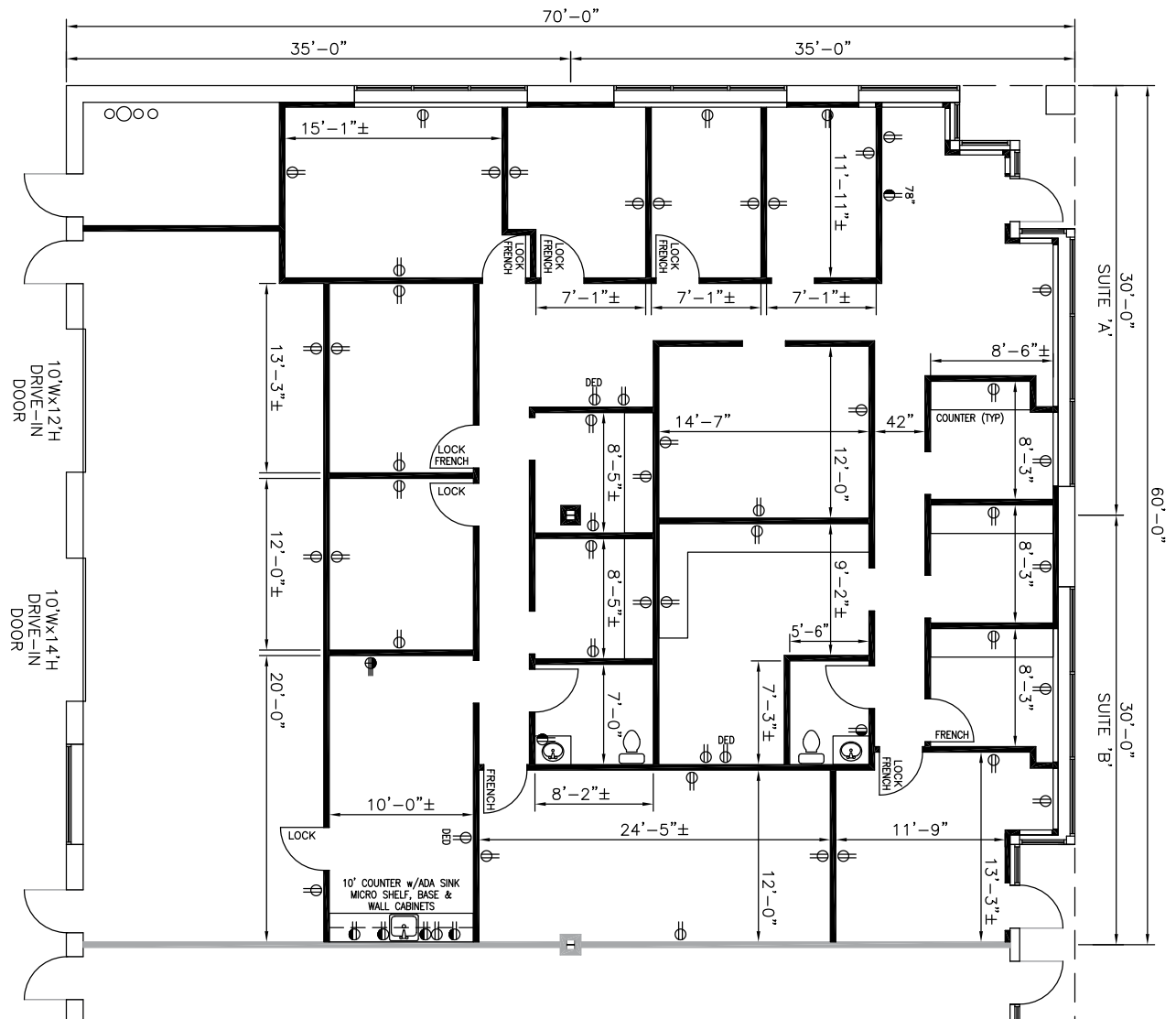


TOTAL SF AVAILABLE:
 4,200 SF

KEY PLAN
 NOT TO SCALE



NOTE: THIS SPACE PLAN IS SUBJECT TO EXISTING FIELD CONDITIONS. THIS DRAWING IS PROPRIETARY AND THE EXCLUSIVE PROPERTY OF ST. JOHN PROPERTIES, INC. ANY DUPLICATIONS, DISTRIBUTION, OR OTHER UNAUTHORIZED USE IN STRICTLY PROHIBITED.



About Business Center at Owings Mills

St. John Properties manages Owings Mills I, II, III and IV, totaling 393,000 sq. ft. of flex/R&D and office space within The Business Center at Owings Mills. The business community, with its campus-like environment, generous free parking and modern office layouts, is surrounded by strip shopping centers and business amenities, including banks, hotels, and a branch of the U.S. Postal Service.

The Baltimore County business center offers quick connections to Baltimore, Columbia, and BWI Airport via I-795, I-695, and I-70, and is just minutes from the Owings Mills Metro stop and Metro Centre at Owings Mills.



For more information on Business Center at Owings Mills, visit: sjpi.com/businesscenter



FLEX / R&D SPACE

SINGLE-STORY FLEX / R&D BUILDINGS

11403 Cronhill Drive	20,088 SF
11409 Cronhill Drive	44,443 SF
11447 Cronhill Drive	41,591 SF
11459 Cronhill Drive	55,900 SF
11438 Cronridge Drive	72,009 SF
11436 Cronridge Drive	29,774 SF
11515 Cronridge Drive	42,161 SF
11521 Cronridge Drive	25,235 SF

FLEX / R&D SPECIFICATIONS

Suite Sizes	1,500 - 30,000 SF
Ceiling Height	
11403-11409 Cronhill Dr.	16 ft. clear minimum
11447 Cronhill Dr.	16 ft. clear minimum
11459 Cronhill Dr.	18 ft. clear minimum
11438-11521 Cronridge Dr.	16 ft. clear minimum
Offices	Built to suit
Parking	4 spaces per 1,000 SF
11403 - 11409 Cronhill Dr.	3.2 per 1,000 SF
Heat	Gas
Roof	EPDM rubber
Exterior Walls	Brick on block
Loading	Dock or drive-in
Zoning	ML-IM



BULK / WAREHOUSE SPACE

BULK / WAREHOUSE BUILDING

11407 Cronhill Drive	91,720 SF
----------------------	-----------

BULK / WAREHOUSE SPECIFICATIONS

Suite Sizes	1,500 - 36,750 SF
Ceiling Height	22 ft. clear minimum
Offices	Built to suit
Parking	3.5 spaces per 1,000 SF
Heat	Gas
Roof	EPDM rubber
Exterior Walls	Brick on block
Loading	Dock or drive-in
Zoning	ML-IM





Distances to:

- Baltimore (Downtown)..... 14 miles
- Columbia, MD..... 18 miles
- Hunt Valley, MD (I-83 & Shawan Rd)..... 9 miles
- Interstate 70..... 11 miles
- Interstate 95 15 miles
- Interstate 695 (Baltimore Beltway) 5 miles
- Owings Mills Town Center 4 miles

About St. John Properties

St. John Properties, Inc. is a full-service real estate company headquartered in Baltimore, Maryland. The company owns, manages and has developed more than 18 million square feet of commercial real estate, including flex/R&D, warehouse, office and retail space.



2560 Lord Baltimore Drive
 Baltimore, MD 21244
 410.788.0100 | SJPI.COM
 CO | MD | NV | PA | LA | UT | VA | WI

For additional leasing information or to schedule a tour, contact:

Will McCullough *Leasing Agent*
 410.369.1207 | wmcullough@sjpi.com

Richard Williamson
SVP Leasing & Marketing
 410.369.1222 | rwilliamson@sjpi.com



Follow us on social media @stjohnprop  

This information contained in this publication has been obtained from sources believed to be reliable. St. John Properties makes no guarantee, warranty or representation about this information. Any projections, opinions, assumptions or estimates used here are for example only and do not represent the current or future performance of the property. Interested parties should conduct an independent investigation to determine whether the property suits their needs. REV 05/17