

COMMERCE CENTER

2812 EMERYWOOD PARKWAY | RICHMOND, VA



BUILDING HIGHLIGHTS

- ◆ 2-story, 57,000 SF Class A office building
- ◆ Conveniently located near the intersection of West Broad Street (Rt. 250) and Glenside Drive with easy access to I-64
- ◆ Wide selection of shopping, restaurants and service amenities within a five mile radius
- ◆ Minutes from Richmond International Airport
- ◆ Ample free parking for tenants and visitors
- ◆ Exterior doors controlled by secure card access
- ◆ Superior building management featuring **eTenants**, an exclusive web-based tenant resource



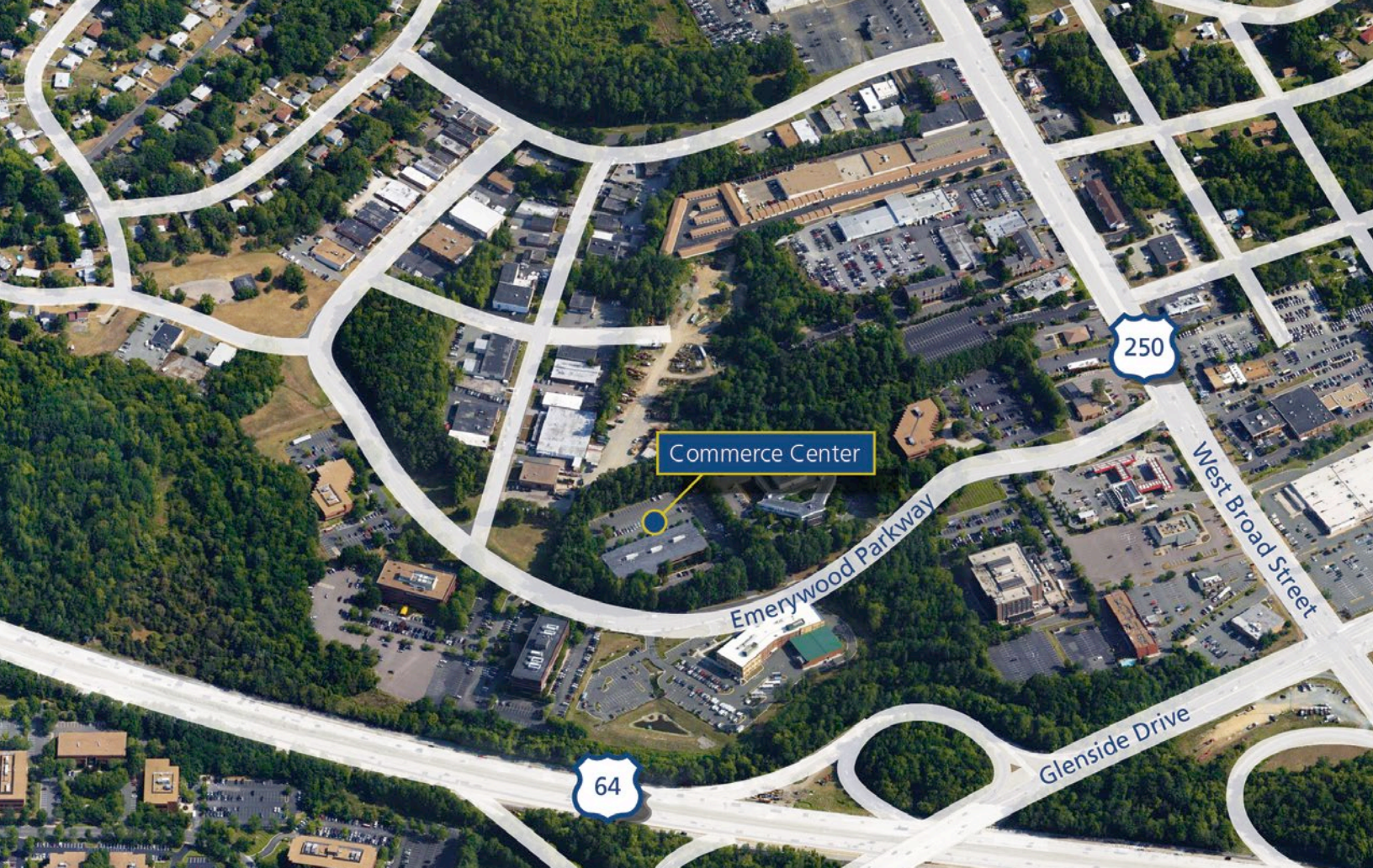
BrandywineRealtyTrust

300 Arboretum Place, Suite 330
Richmond, VA 23236

For more information:

Amanda Tyson | 804.521.1830
Amanda.Tyson@bdnreit.com

Joey Caperton | 804.521.1824
Joey.Caperton@bdnreit.com



Brandywine Realty Trust (NYSE: BDN) is one of the largest, publicly traded, full-service, integrated real estate companies in the United States with a core focus in the Philadelphia, Washington, D.C., and Austin markets. Organized as a real estate investment trust (REIT), we own, develop, lease and manage an urban, town center and transit-oriented portfolio.

Our purpose is to shape, connect and inspire the world around us through our expertise, the relationships we foster, the communities in which we live and work, and the history we together build. Our deep commitment to our communities was recognized by **NAIOP naming Brandywine the 2014 Developer of the Year**—the highest honor in the commercial real estate industry.



BrandywineRealtyTrust

300 Arboretum Place, Suite 330
Richmond, VA 23236

For more information:

Amanda Tyson | 804.521.1830
Amanda.Tyson@bdnreit.com

Joey Caperton | 804.521.1824
Joey.Caperton@bdnreit.com