

FOR SALE | LAND

# 10.39 +/- ACRE DEVELOPMENT SITE

694-696 North Beers Street | Holmdel, NJ 07733



## PROPERTY SUMMARY

**Sale Price:** \$6,500,000

## PROPERTY OVERVIEW

10.39 +/- Acre Development Site for Sale

**Lot Size:** 10.39 Acres

## LOCATION OVERVIEW

Located across from Bayshore Community hospital with exposure to the Garden State Parkway. Easy access to Routes 35 and 36 and the Garden State Parkway.

**Cross Streets:** North Beers Street & Bethany Rd

## PROPERTY HIGHLIGHTS

- Block 35, Lots 14.01 and 1
- 394.68' frontage on North Beers
- Permitted uses include hospitals, office buildings, medical facilities, child care facilities, and single family homes (R-15 standards)

FOR MORE INFORMATION, PLEASE CONTACT:

**William Sitar Sr.** | P: 732.623.2130 | C: 908.510.9600 | [sitar@sitarcompany.com](mailto:sitar@sitarcompany.com)

1481 Oak Tree Road  
Iselin, NJ 08830  
T: 732.283.9000 | F: 732.283.3103  
[www.sitarcompany.com](http://www.sitarcompany.com)

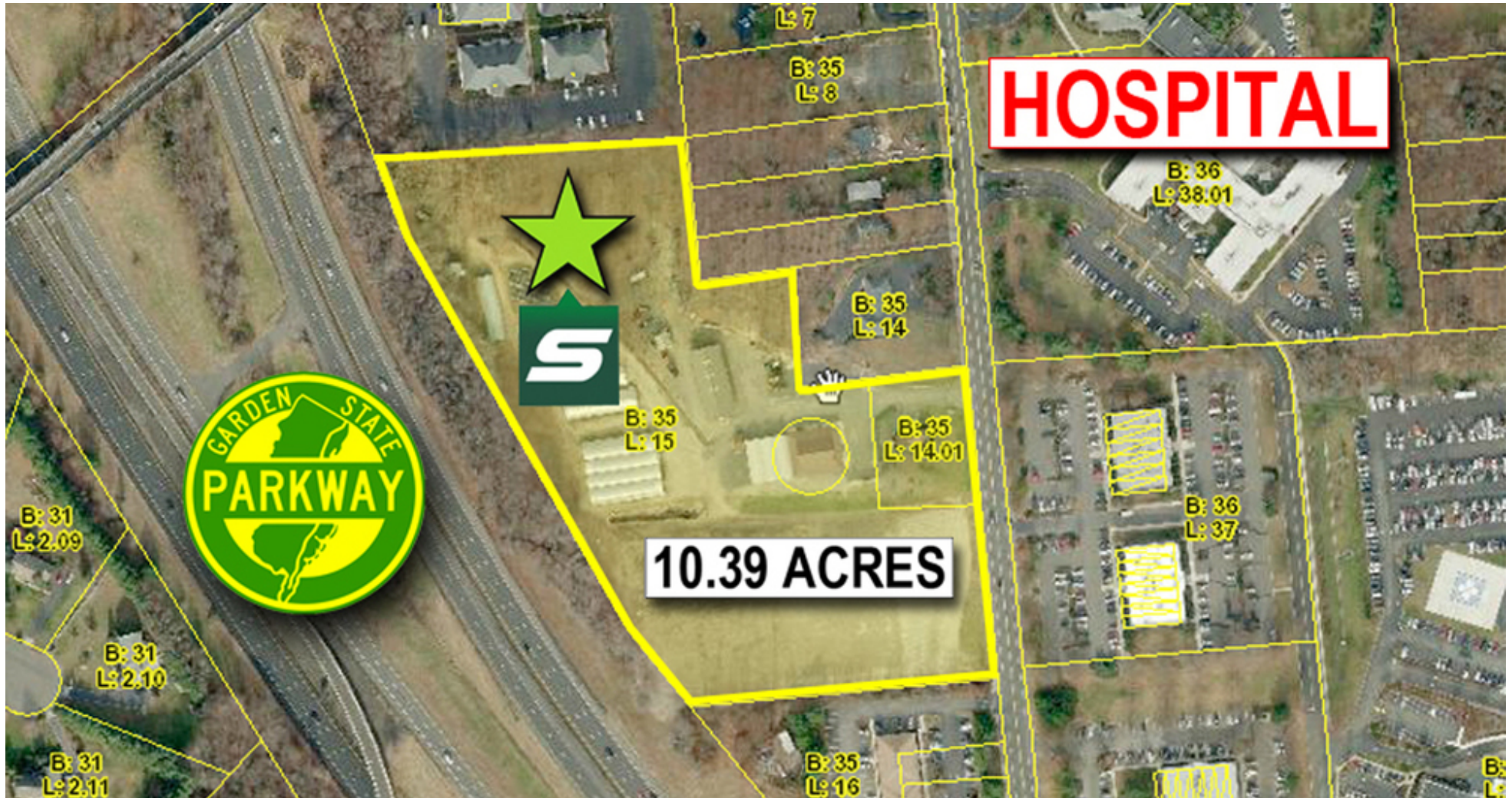


FOR SALE | LAND

# 10.39 +/- ACRE DEVELOPMENT SITE

694-696 North Beers Street | Holmdel, NJ 07733

**Sitar**  
Realty Company



FOR MORE INFORMATION, PLEASE CONTACT:

William Sitar Sr. | P: 732.623.2130 | C: 908.510.9600 | [sitar@sitarcompany.com](mailto:sitar@sitarcompany.com)

1481 Oak Tree Road  
Iselin, NJ 08830  
T: 732.283.9000 | F: 732.283.3103  
[www.sitarcompany.com](http://www.sitarcompany.com)

Disclaimer: ALL INFORMATION FURNISHED REGARDING PROPERTY FOR SALE, RENTAL OR FINANCING IS FROM SOURCES DEEMED RELIABLE, BUT NO WARRANTY OR REPRESENTATION IS MADE AS TO THE ACCURACY THEREOF AND SAME IS SUBMITTED SUBJECT TO ERRORS, OMISSIONS, CHANGES OF PRICE, RENTAL OR OTHER CONDITIONS, PRIOR SALE, LEASE OR FINANCING OR WITHDRAWAL WITHOUT NOTICE.

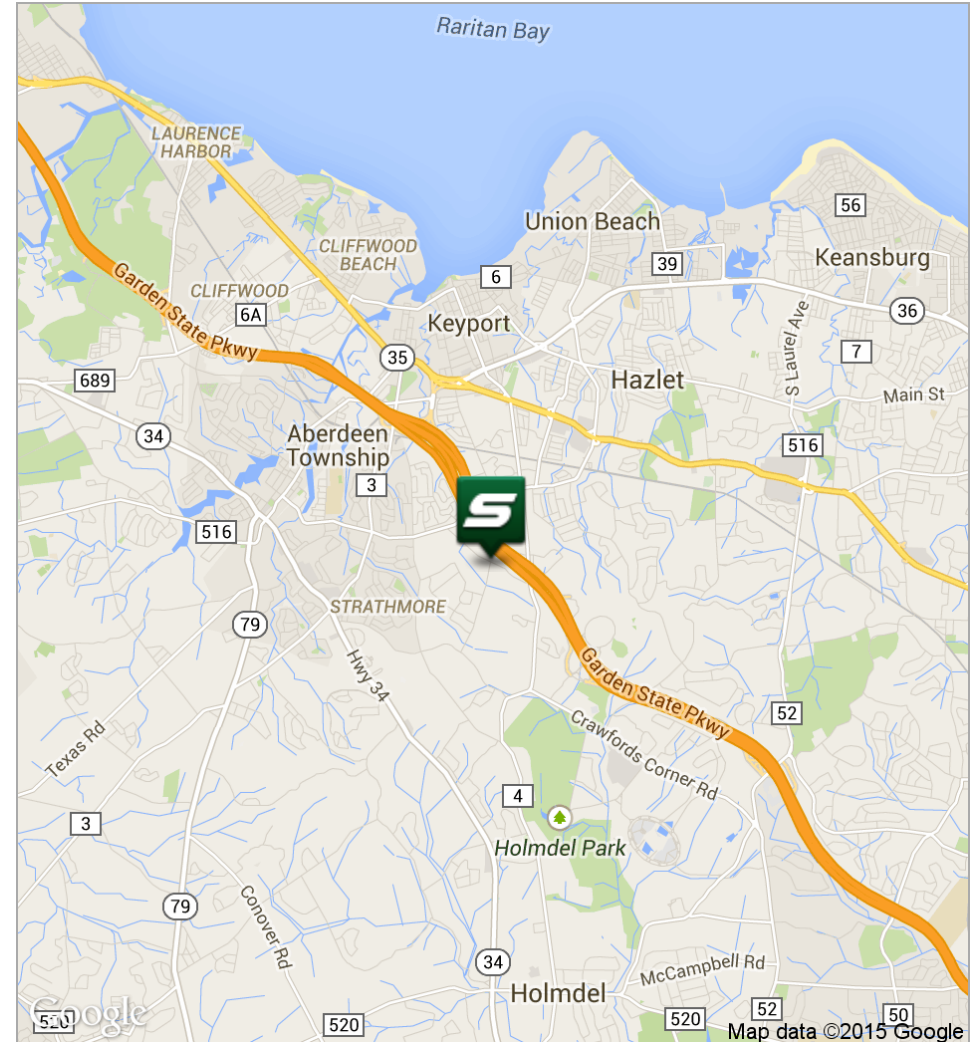
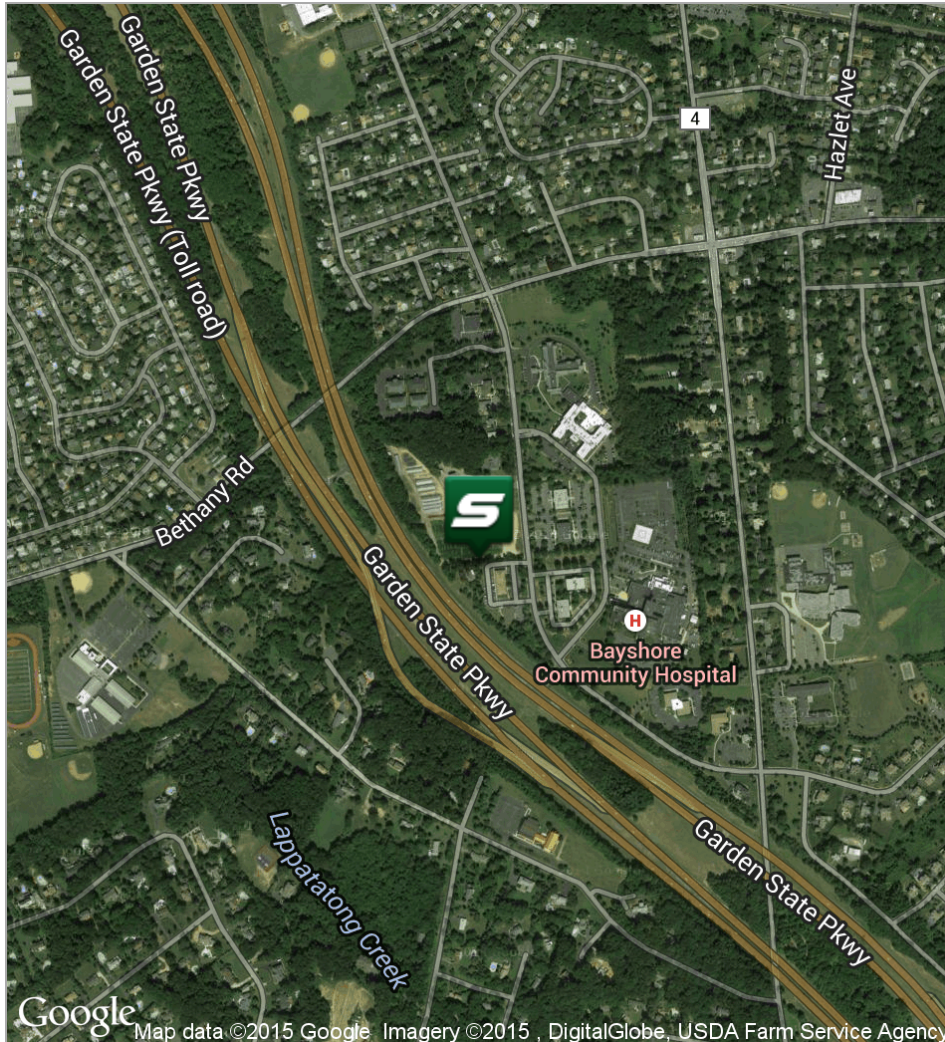


FOR SALE | LAND

# 10.39 +/- ACRE DEVELOPMENT SITE

694-696 North Beers Street | Holmdel, NJ 07733

**Sitar**  
Realty Company



FOR MORE INFORMATION, PLEASE CONTACT:

**William Sitar Sr.** | P: 732.623.2130 | C: 908.510.9600 | [sitar@sitarcompany.com](mailto:sitar@sitarcompany.com)

1481 Oak Tree Road  
Iselin, NJ 08830  
T: 732.283.9000 | F: 732.283.3103  
[www.sitarcompany.com](http://www.sitarcompany.com)

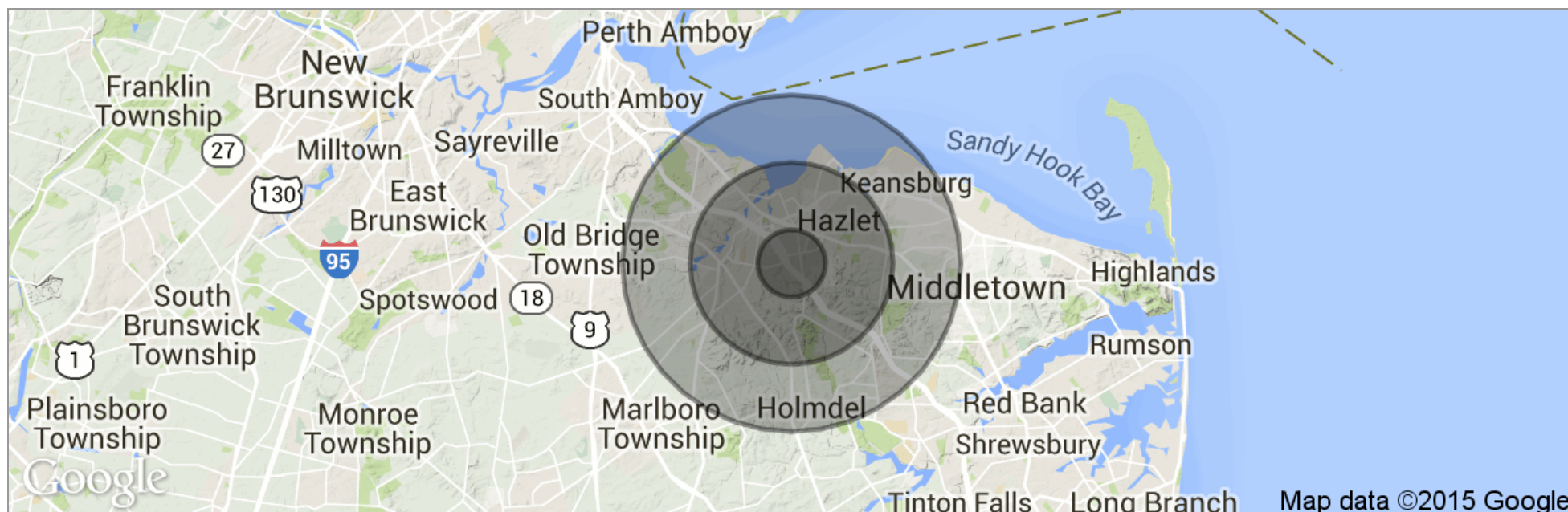
Disclaimer: ALL INFORMATION FURNISHED REGARDING PROPERTY FOR SALE, RENTAL OR FINANCING IS FROM SOURCES DEEMED RELIABLE, BUT NO WARRANTY OR REPRESENTATION IS MADE AS TO THE ACCURACY THEREOF AND SAME IS SUBMITTED SUBJECT TO ERRORS, OMISSIONS, CHANGES OF PRICE, RENTAL OR OTHER CONDITIONS, PRIOR SALE, LEASE OR FINANCING OR WITHDRAWAL WITHOUT NOTICE.

FOR SALE | LAND

# 10.39 +/- ACRE DEVELOPMENT SITE



694-696 North Beers Street | Holmdel, NJ 07733



	1 Mile	3 Miles	5 Miles
Total Population	6,547	62,039	122,114
Population Density	2,084	2,194	1,555
Median Age	39.4	41.2	41.1
Median Age (Male)	36.8	39.7	40.0
Median Age (Female)	41.8	42.4	42.2
Total Households	2,095	22,545	43,558
# of Persons Per HH	3.1	2.8	2.8
Average HH Income	\$135,165	\$110,720	\$115,253
Average House Value	\$407,677	\$372,289	\$426,967

FOR MORE INFORMATION, PLEASE CONTACT:

**William Sitar Sr.** | P: 732.623.2130 | C: 908.510.9600 | [sitar@sitarcompany.com](mailto:sitar@sitarcompany.com)

1481 Oak Tree Road  
Iselin, NJ 08830  
T: 732.283.9000 | F: 732.283.3103  
[www.sitarcompany.com](http://www.sitarcompany.com)

Disclaimer: ALL INFORMATION FURNISHED REGARDING PROPERTY FOR SALE, RENTAL OR FINANCING IS FROM SOURCES DEEMED RELIABLE, BUT NO WARRANTY OR REPRESENTATION IS MADE AS TO THE ACCURACY THEREOF AND SAME IS SUBMITTED SUBJECT TO ERRORS, OMISSIONS, CHANGES OF PRICE, RENTAL OR OTHER CONDITIONS, PRIOR SALE, LEASE OR FINANCING OR WITHDRAWAL WITHOUT NOTICE.