

BRAND NEW MEDICAL SPACE

ROLLING OAKS PLAZA

77 ROLLING OAKS DRIVE • THOUSAND OAKS, CALIFORNIA



PROPERTY HIGHLIGHTS

- Newly Remodeled Medical Building
- 920 to 2,402 Rentable Square Feet
- Highly Desirable Medical Suite Location
- Convenient Access To The Ventura (101) Freeway
- 3 Miles To Los Robles Hospital & Medical Center
1/2 Mile To Thousand Oaks Surgical Hospital

FOR MORE INFORMATION PLEASE CONTACT:

TOM SPECKER
PRINCIPAL
818.223.4381
tspecker@lee-re.com
License ID#01157107

SCOTT SILVERSTEIN
PRINCIPAL
818.223.4391
ssilverstein@lee-re.com
License ID#00877034

LEE & ASSOCIATES
COMMERCIAL REAL ESTATE SERVICES

Lee & Associates® - LA North/Ventura, Inc. - Corporate ID #01191898
A Member of the Lee & Associates Group of Companies
26050 Mureau Rd., Suite 101, Calabasas, CA 91302
P:818.223.4388 F:818.591.1450 web: www.lee-associates.com

No warranty or representation is made to the accuracy of the foregoing information. Terms of sale or lease and availability are subject to change or withdrawal without notice.

ROLLING OAKS PLAZA

77 ROLLING OAKS DRIVE • THOUSAND OAKS, CALIFORNIA

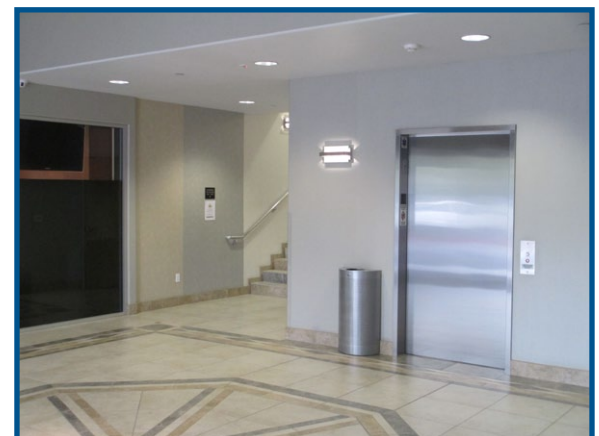
:: AVAILABILITY SUMMARY

SUITE	SIZE
120	Approx. 1,846 RSF
110	Approx. 920 RSF
220	Approx. 1,811 RSF
301	Approx. 2,402 RSF



:: PROPERTY DETAILS

- Complete Exterior and Interior Renovation
- Currently Being Completed
- \$3.05/RSF Modified Gross (+ Electricity & Janitorial)
- \$70 per USF Tenant Improvement Allowance
for Raw Suites
- 7-10 Year Lease Terms
- Available For Improvements
- Flexible Floor Plan Options
- Verizon FIOS Available
- Two Separate Elevator Lobbies
- Monument Signage Available



FOR MORE INFORMATION PLEASE CONTACT:

TOM SPECKER
PRINCIPAL
818.223.4381
tspecker@lee-re.com
License ID#01157107

SCOTT SILVERSTEIN
PRINCIPAL
818.223.4391
ssilverstein@lee-re.com
License ID#00877034

 **LEE & ASSOCIATES**
COMMERCIAL REAL ESTATE SERVICES

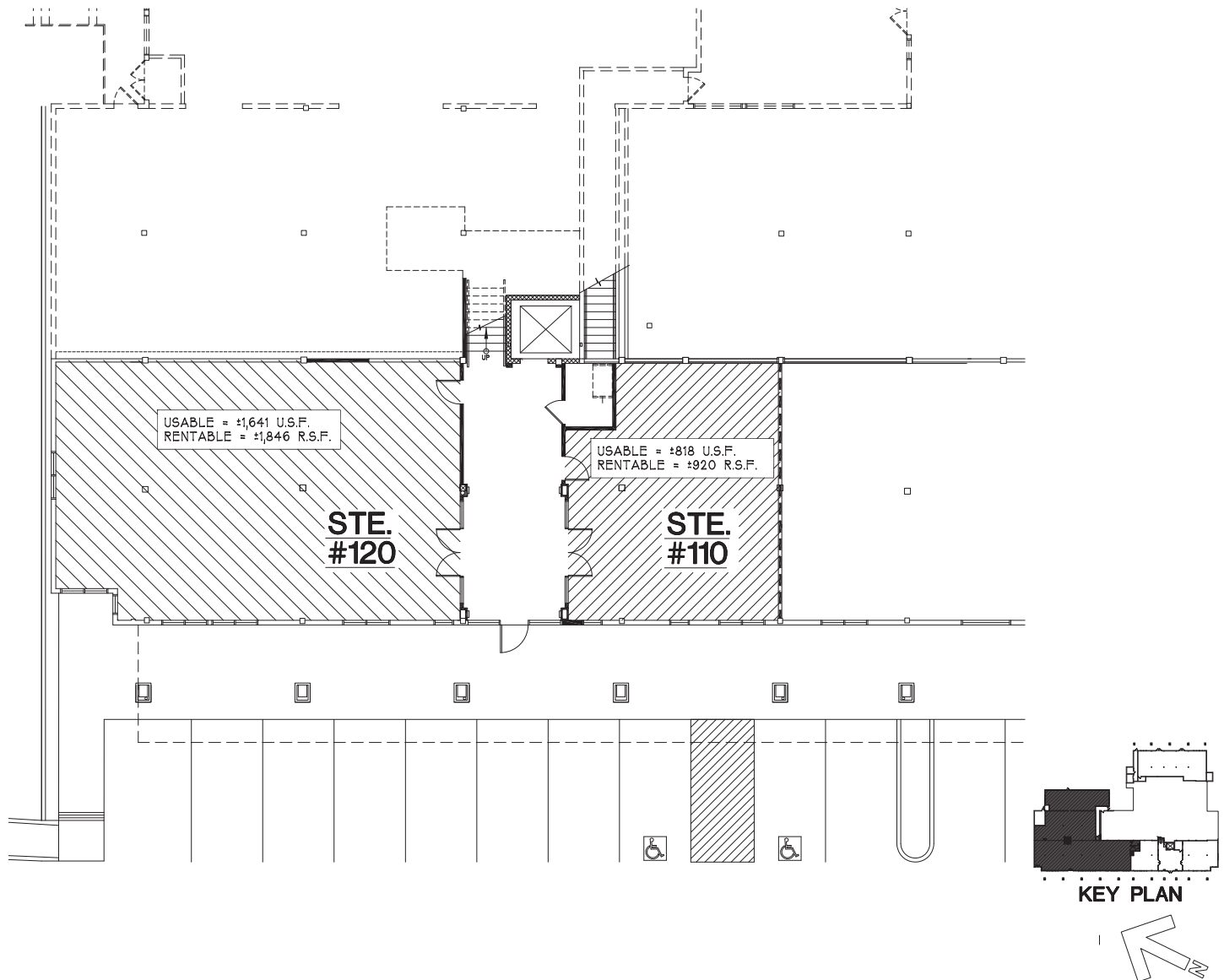
Lee & Associates® – LA North/Ventura, Inc. - Corporate ID #01191898
A Member of the Lee & Associates Group of Companies
26050 Mureau Rd., Suite 101, Calabasas, CA 91302
P:818.223.4388 F:818.591.1450 web: www.lee-associates.com

No warranty or representation is made to the accuracy of the foregoing information. Terms of sale or lease and availability are subject to change or withdrawal without notice.

ROLLING OAKS PLAZA

77 ROLLING OAKS DRIVE • THOUSAND OAKS, CALIFORNIA

:: SUITE 120 & 110 FLOORPLAN



*NOT TO SCALE

FOR MORE INFORMATION PLEASE CONTACT:

TOM SPECKER
PRINCIPAL
818.223.4381
tspecker@lee-re.com
License ID#01157107

SCOTT SILVERSTEIN
PRINCIPAL
818.223.4391
ssilverstein@lee-re.com
License ID#00877034

LEE & ASSOCIATES
COMMERCIAL REAL ESTATE SERVICES

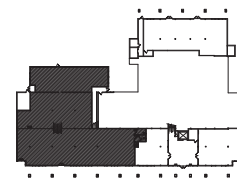
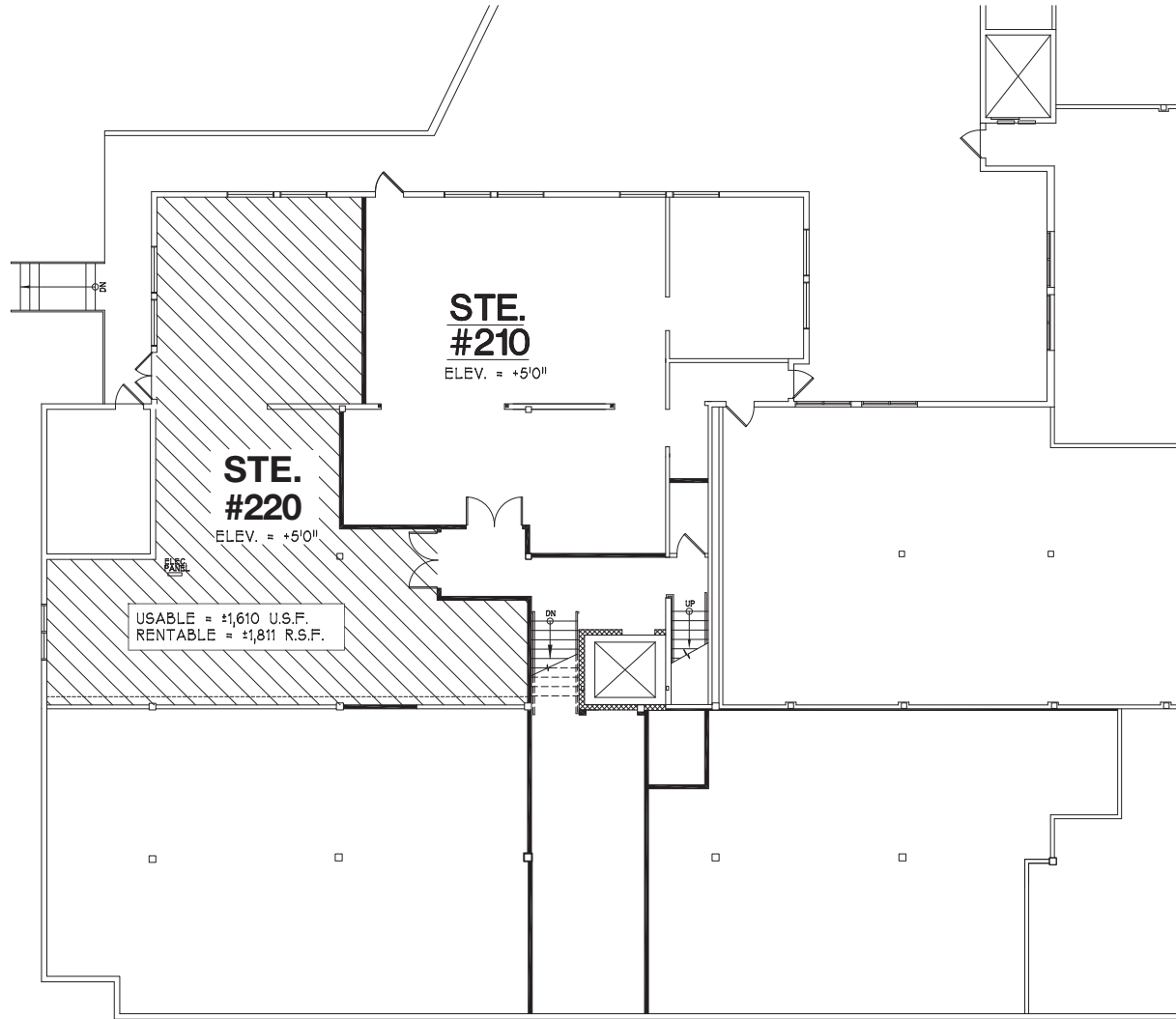
Lee & Associates® – LA North/Ventura, Inc. - Corporate ID #01191898
A Member of the Lee & Associates Group of Companies
26050 Mureau Rd., Suite 101, Calabasas, CA 91302
P:818.223.4388 F:818.591.1450 web: www.lee-associates.com

No warranty or representation is made to the accuracy of the foregoing information. Terms of sale or lease and availability are subject to change or withdrawal without notice.

ROLLING OAKS PLAZA

77 ROLLING OAKS DRIVE • THOUSAND OAKS, CALIFORNIA

:: SUITE 220 FLOORPLAN



KEY PLAN



*NOT TO SCALE

FOR MORE INFORMATION PLEASE CONTACT:

TOM SPECKER
PRINCIPAL
818.223.4381
tspecker@lee-re.com
License ID#01157107

SCOTT SILVERSTEIN
PRINCIPAL
818.223.4391
ssilverstein@lee-re.com
License ID#00877034

 **LEE & ASSOCIATES**
COMMERCIAL REAL ESTATE SERVICES

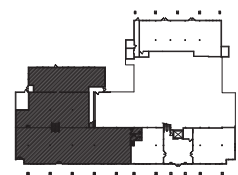
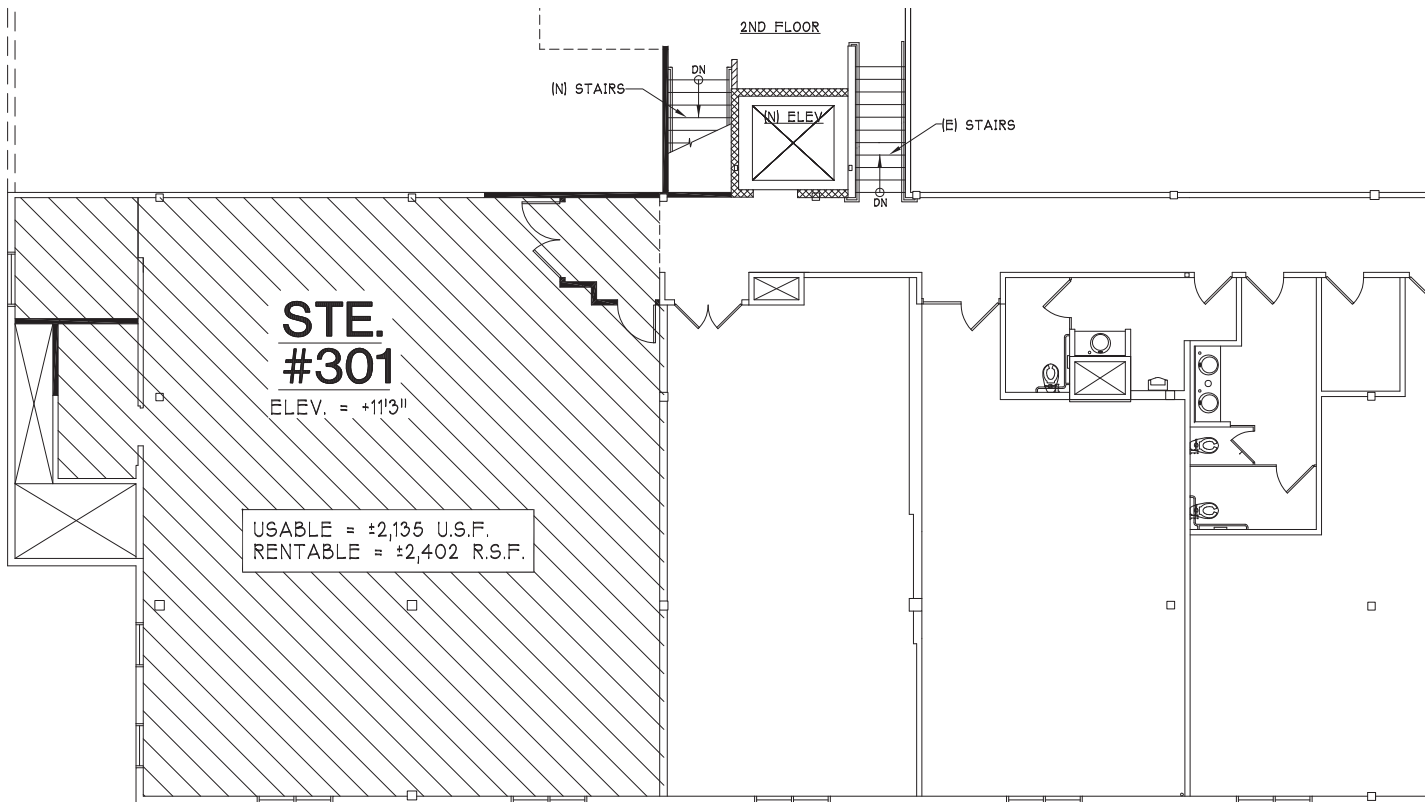
Lee & Associates® - LA North/Ventura, Inc. - Corporate ID #01191898
A Member of the Lee & Associates Group of Companies
26050 Mureau Rd., Suite 101, Calabasas, CA 91302
P:818.223.4388 F:818.591.1450 web: www.lee-associates.com

No warranty or representation is made to the accuracy of the foregoing information. Terms of sale or lease and availability are subject to change or withdrawal without notice.

ROLLING OAKS PLAZA

77 ROLLING OAKS DRIVE • THOUSAND OAKS, CALIFORNIA

:: SUITE 301 FLOORPLAN



KEY PLAN



*NOT TO SCALE

FOR MORE INFORMATION PLEASE CONTACT:

TOM SPECKER
PRINCIPAL
818.223.4381
tspecker@lee-re.com
License ID#01157107

SCOTT SILVERSTEIN
PRINCIPAL
818.223.4391
ssilverstein@lee-re.com
License ID#00877034

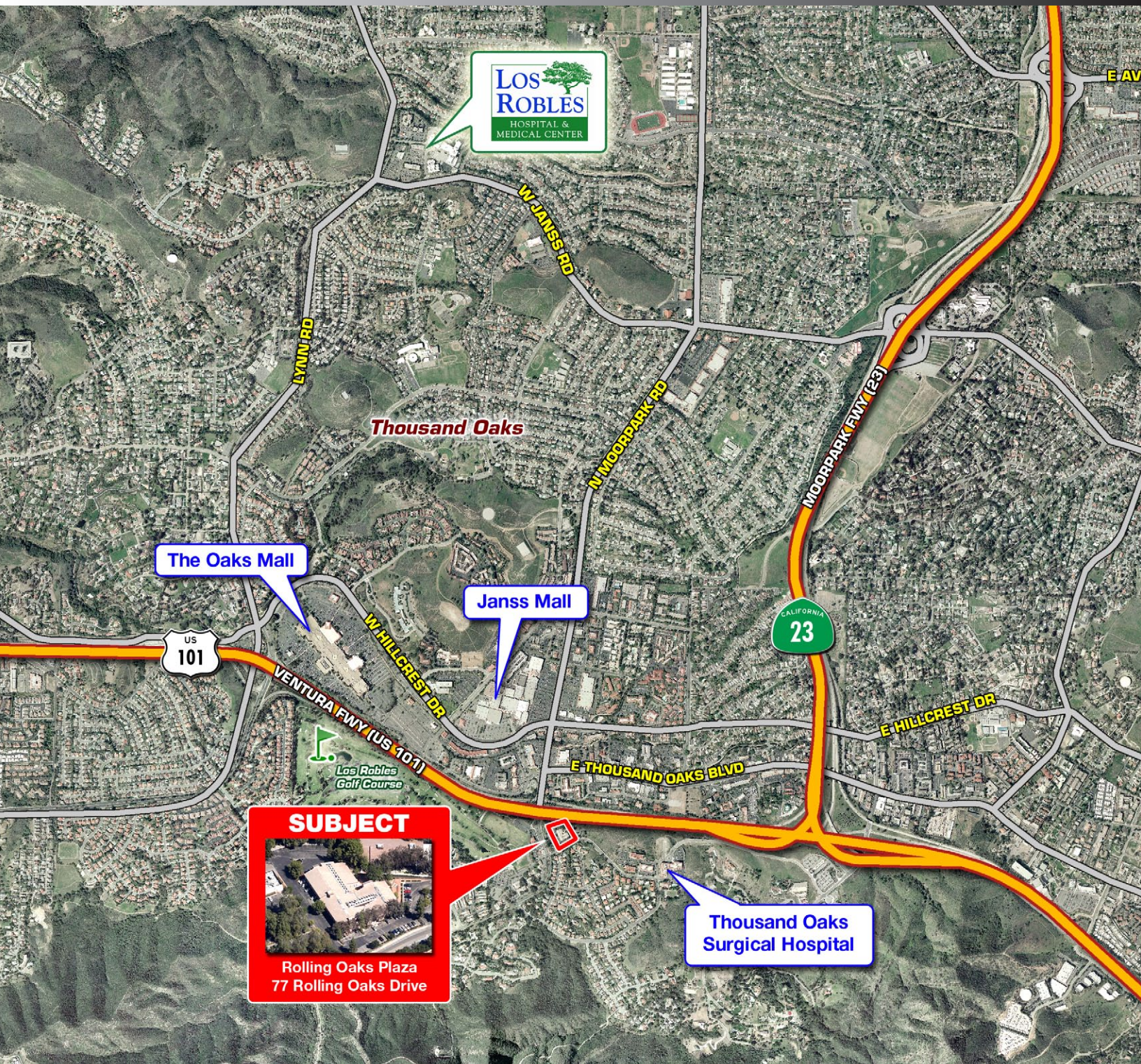
 **LEE & ASSOCIATES**
COMMERCIAL REAL ESTATE SERVICES

Lee & Associates® - LA North/Ventura, Inc. - Corporate ID #01191898
A Member of the Lee & Associates Group of Companies
26050 Mureau Rd., Suite 101, Calabasas, CA 91302
P:818.223.4388 F:818.591.1450 web: www.lee-associates.com

No warranty or representation is made to the accuracy of the foregoing information. Terms of sale or lease and availability are subject to change or withdrawal without notice.

ROLLING OAKS PLAZA

77 ROLLING OAKS DRIVE • THOUSAND OAKS, CALIFORNIA



AERIAL VIEW

FOR MORE INFORMATION PLEASE CONTACT:

TOM SPECKER
PRINCIPAL
818.223.4381
tspecker@lee-re.com
License ID#01157107

SCOTT SILVERSTEIN
PRINCIPAL
818.223.4391
ssilverstein@lee-re.com
License ID#00877034

LEE & ASSOCIATES
COMMERCIAL REAL ESTATE SERVICES

Lee & Associates® - LA North/Ventura, Inc. - Corporate ID #01191898
A Member of the Lee & Associates Group of Companies
26050 Mureau Rd., Suite 101, Calabasas, CA 91302
P:818.223.4388 F:818.591.1450 web: www.lee-associates.com

No warranty or representation is made to the accuracy of the foregoing information. Terms of sale or lease and availability are subject to change or withdrawal without notice.