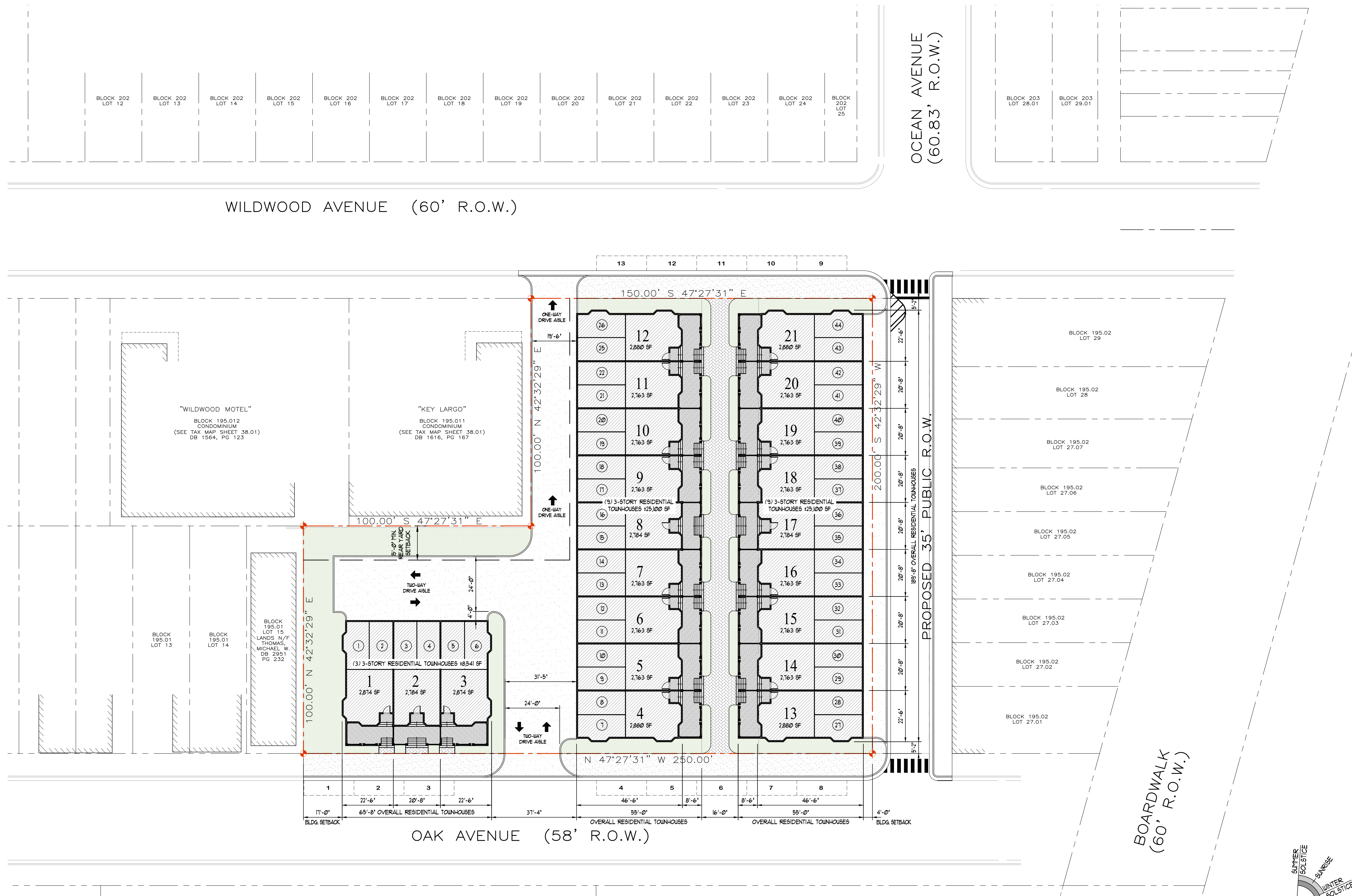


S:\0516-C2\1863-01 - Parkside Drive Site Plan Conceptual.dwg, \$P=5, 4/2/2018 9:11:11 PM

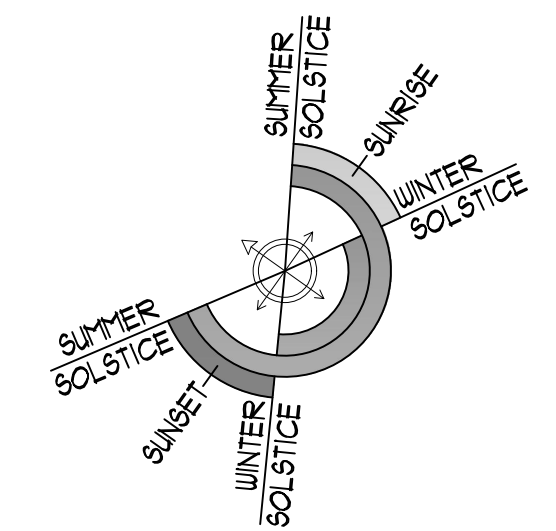


1 PROPOSED SITE PLAN - SCHEME #5
SCALE: 1" = 20'-0"

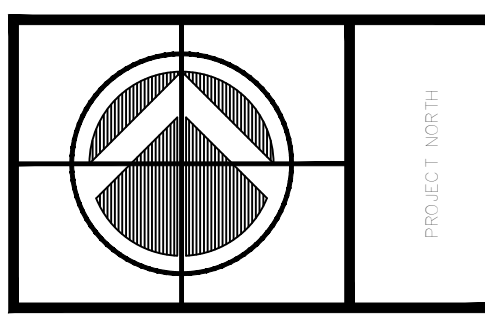
PROPOSED LOT AREA -	44,000 SF (1.01 ACRES)
PROPOSED BUILDING COVERAGE -	*24,241 SF (55.1%)
PROPOSED LOT COVERAGE -	*38,250 SF (86.9%)

PROPOSED ON-SITE RESIDENTIAL PARKING SPACES -	(42) SPACES
PROPOSED OFF-SITE PARKING SPACES -	(13) SPACES
TOTAL PARKING SPACES -	(55) SPACES

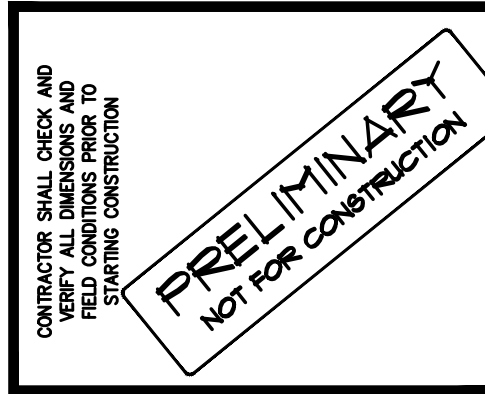
* - INDICATES NON-CONFORMING BULK REQUIREMENT, VARIANCE REQUIRED.



OSK DESIGN PARTNERS, P.A.
ARCHITECTS AND LAND PLANNERS
www.oskdesignpartners.com
916 SECOND AVENUE, SUITE 201,
STONE HARBOR, NEW JERSEY 08247
FOUNDER: JOHN J. OLIVERI (1956-1999)
PRINCIPAL: DANIEL A. SHOUSKY, AIA, PP, NCARB
PRINCIPAL: PAUL CALISE, AIA, PP, NCARB
PARTNER: GERALD S. BLACKMAN, JR., AIA, PP, NCARB
ASSOCIATE: STEVEN J. BOLDOSKO, AIA, NCARB, LEED AP
COLLINGSWOOD, NEW JERSEY 08108
• MASSACHUSETTS • NEW JERSEY • NEW YORK • PENNSYLVANIA • VIRGINIA • WEST VIRGINIA • WISCONSIN



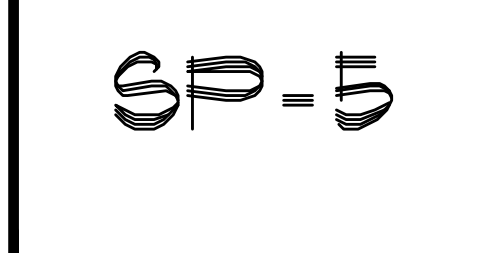
PROJECT
PROPOSED RESIDENTIAL DEVELOPMENT
OAK AVENUE & WILDWOOD AVENUE
CITY OF WILDWOOD, NEW JERSEY
CONCEPTUAL SITE PLAN - SCHEME #5
DWG. TITLE



REVISIONS:	DATE:

DRAWN BY:	BJW
CHECKED BY:	JJB
DATE:	4-2-2018
SCALE:	

JOB NO.	1863-01
---------	---------



ALL DRAWINGS COPYRIGHT © OSK DESIGN PARTNERS, P.A. ALL RIGHTS RESERVED