

**NOTES**

This map is for assessment use only and does NOT represent a survey.  
 No liability is assumed for the accuracy of the data delineated herein.  
 Information on roads and other non-assessed parcels may be obtained from the Road Document Listing in the Assessor's Office.

This map is compiled from official records, including surveys and deeds, but only contains the information required for assessment. See the recorded documents for more detailed legal information.

USE THIS SCALE (FEET) WHEN MAP REDUCED FROM 11X17 ORIGINAL

**ASSESSOR'S PARCELS - CLARK CO., NV.**  
 Michele W. Shafe - Assessor

**MAP LEGEND**

- PARCEL BOUNDARY
- SUB BOUNDARY
- PM/LD BOUNDARY
- ROAD EASEMENT
- NON-PARCEL LOT LINE
- MATCH / LEADER LINE
- HISTORIC SUB BOUNDARY
- HISTORIC PM/LD BOUNDARY
- SECTION LINE
- CONDOMINIUM UNIT
- AIR SPACE PCL
- RIGHT OF WAY PCL
- SUB-SURFACE PCL
- ROAD ID NUMBER
- PARCEL NUMBER
- ACREAGE
- PARCEL SUB/SEQ NUMBER
- PLAT RECORDING NUMBER
- BLOCK NUMBER
- LOT NUMBER
- GOV. LOT NUMBER

BOOK **T18S R63E** SEC **34** MAP **ALL SEC**

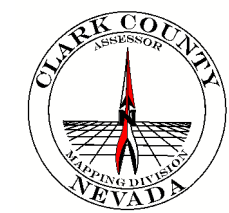
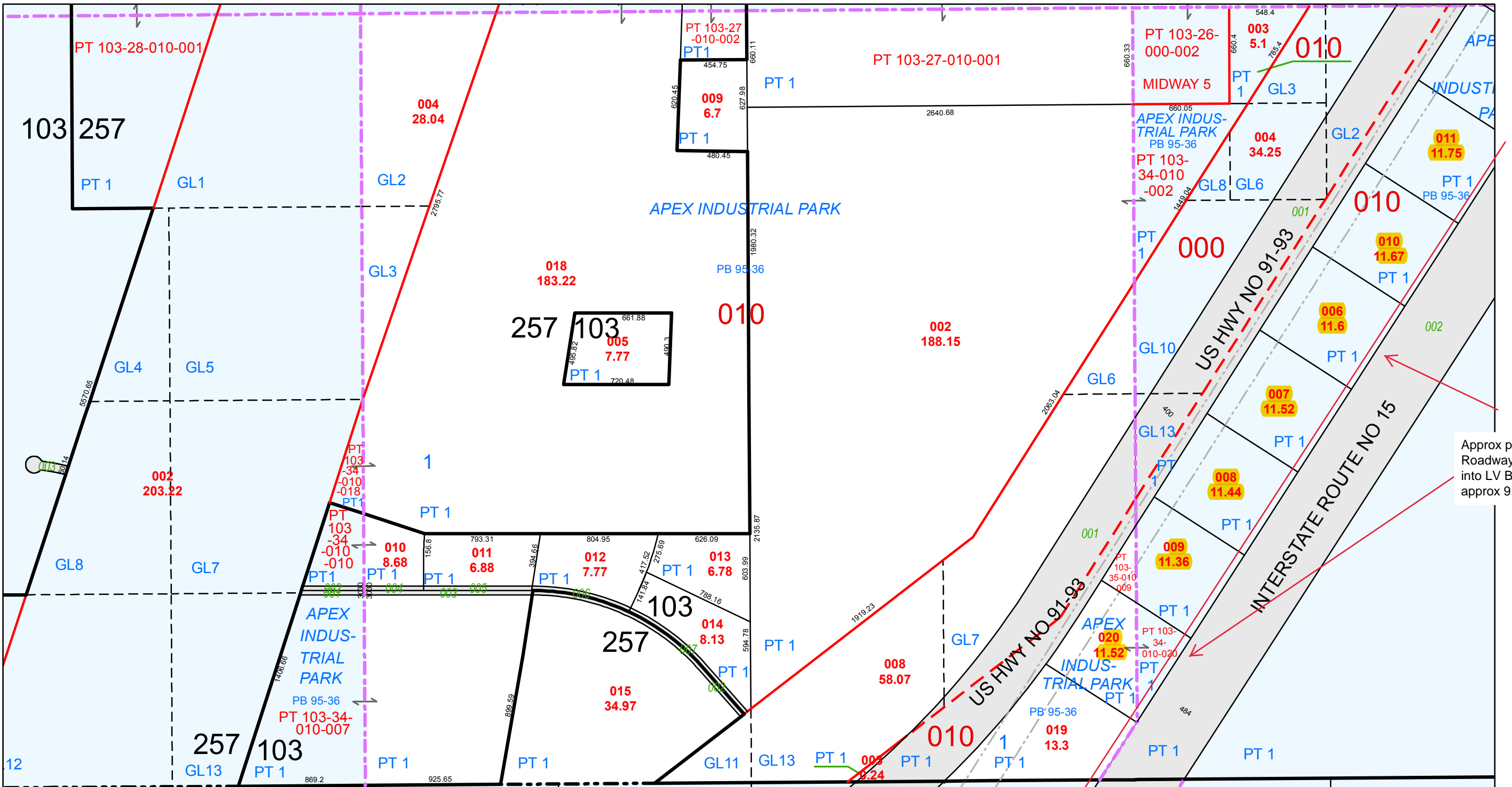
102	103	104
123	122	121

6	5	4	3	2	1
7	8	9	10	11	12
18	17	16	15	14	13
19	20	21	22	23	24
30	29	28	27	26	25
31	32	33	34	35	36

8	4	8	4
5	1	5	1
6	2	6	2
7	3	7	3
8	4	8	4
5	1	5	1

Scale: 1" = 800' Rev: 2/6/2014

**103-34-0**

Approx proposed private Roadway location tying into LV Blvd N. approx 9,800' in length