

FOR LEASE

# THE TOWERS AT WESTSHORE

1408 AND 1410

N WESTSHORE BLVD

## WARD STREET CENTER

1309

WARD STREET

Tampa, FL 33607



## WESTSHORE BUSINESS DISTRICT

OFFICE SPACE FROM 1,104 TO 25,808 SF

- + Three-five year term
- + Immediate occupancy
- + Negotiable asking rate
- + Ample surface and covered parking
- + Ample surface and covered parking
- + Less than 10 minutes to Tampa International Airport and executive housing
- + Convenient to two major malls and a variety of additional shops and restaurants as well as numerous hotels

CBRE

# FOR LEASE

# THE TOWERS AT WESTSHORE

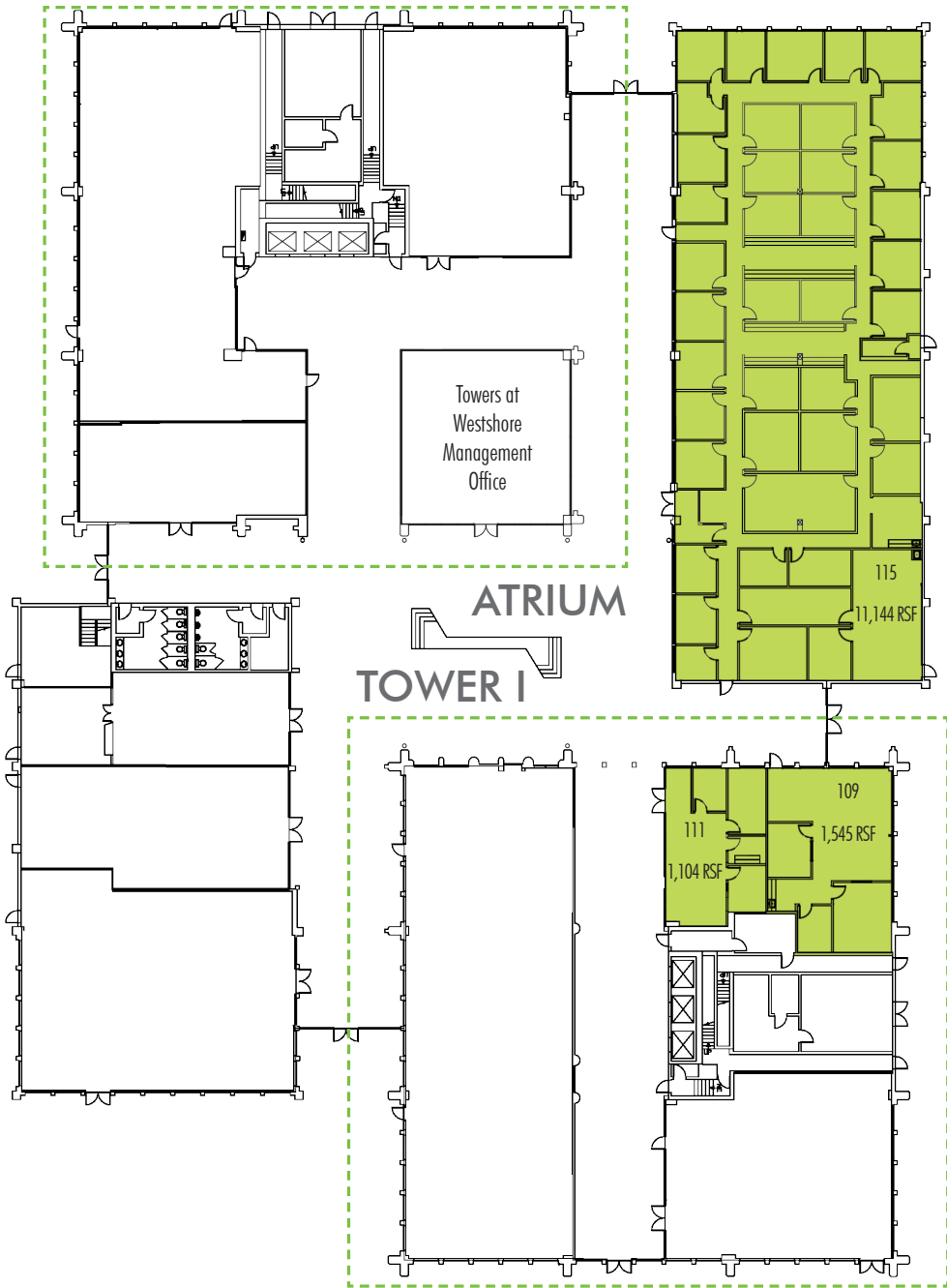
 Current/Upcoming Vacancies

Please verify availability with broker to assure most up-to-date information.



## ATRIUM LEVEL (GROUND FLOOR)

### TOWER II



Class A office buildings in the  
Westshore Business District

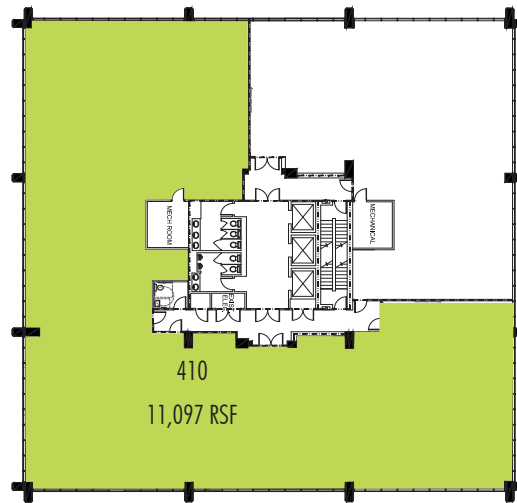
FOR LEASE

1408 AND 1410  
N WESTSHORE BLVD

Tampa, FL 33607

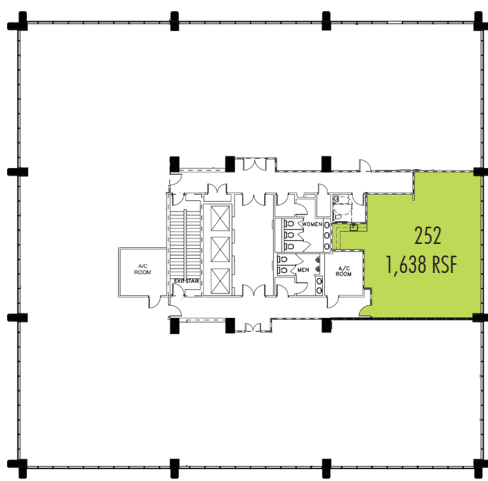


**TOWER I - 1410 N WESTSHORE BLVD**

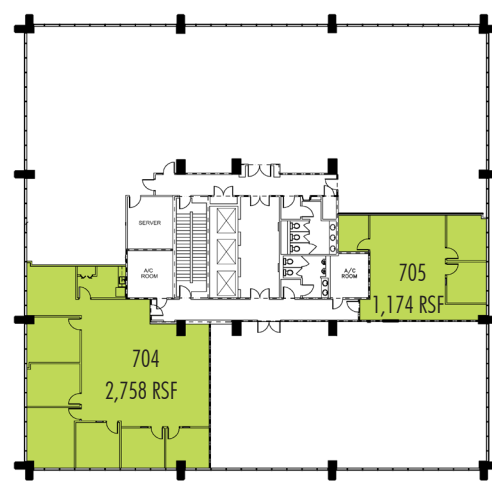


Floor 4

**TOWER II - 1408 N WESTSHORE BLVD**



Floor 2



Floor 7

# WARD STREET CENTER

1309 WARD STREET

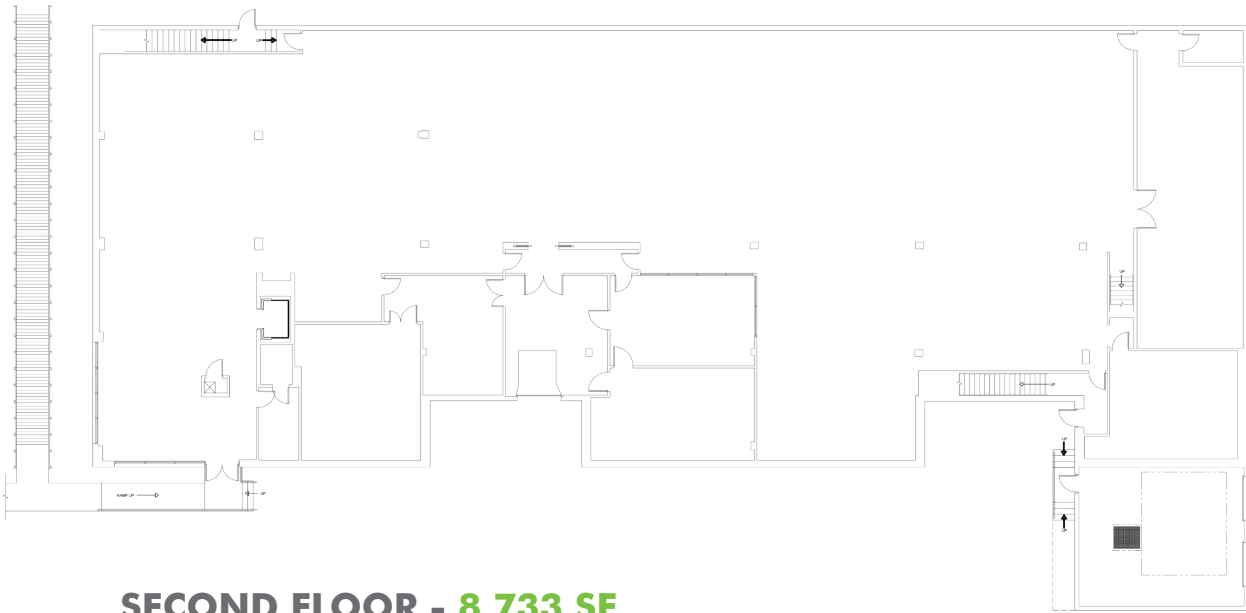


## PROPERTY HIGHLIGHTS

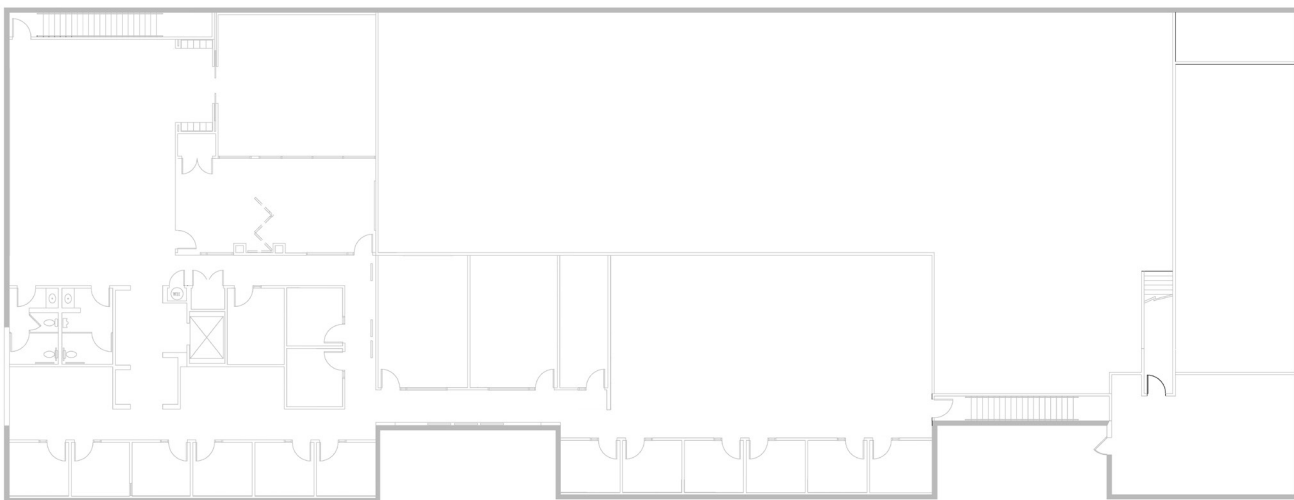
- + Dock high loading dock
- + Building - 25,808 RSF
- + In the heart of the Westshore Business District
- + Minutes from Tampa International Airport with easy access to all of Tampa Bay
- + Flexible use



## FIRST FLOOR - 17,075 SF



## SECOND FLOOR - 8,733 SF



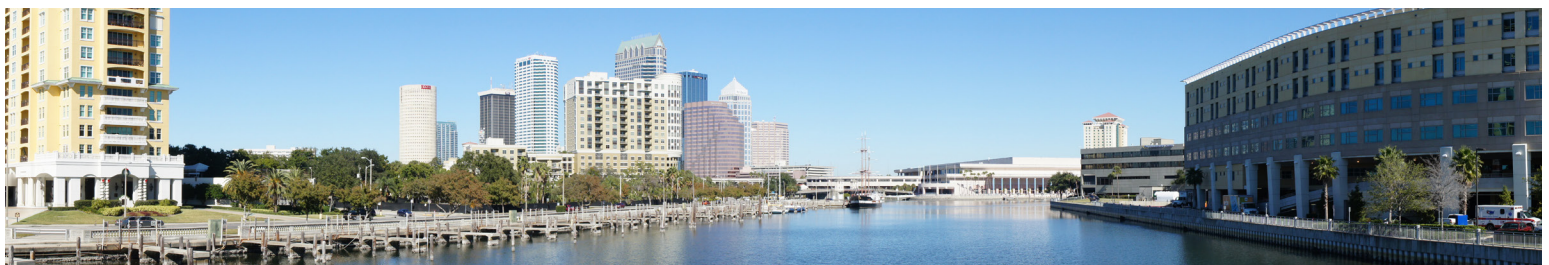


## CURRENT/UPCOMING VACANCIES

Location	Rentable SF	Availability
<b>Tower I</b>		
Suite 109	1,545 RSF	Immediately
Suite 111	1,104 RSF	Immediately
Suites 109 & 111	2,649 RSF	Immediately
Suite 410	11,097 RSF	Immediately
<b>Atrium</b>		
Suite 115	11,144 RSF	7/1/2019
<b>Tower II</b>		
Suite 252	1,638 RSF	Immediately
Suite 704	2,758 RSF	Immediately
Suite 705	1,174 RSF	Immediately
<b>Ward Street Center</b>		
1309 Ward Street	25,808 RSF	Immediately



- + On-site management and building accounting
- + On-site deli
- + Day porters and building engineers servicing building during business hours
- + Located one mile from Tampa International Airport and executive housing
- + Easy access to I-275, I-4 and Bay area bridges
- + Prominent Westshore Boulevard signage available
- + Verizon FIOS, Bright House Networks and Level 3 Communications
- + 24-7 manned security
- + Tenant conference facility
- + Multiple restaurants within walking distance
- + Convenient to two major malls and a variety of additional shops and restaurants as well as numerous hotels
- + Views of the Bay and downtown Tampa skyline



FOR LEASE

# THE TOWERS AT WESTSHORE WARD STREET CENTER



North Westshore Boulevard

The Towers at Westshore

West Laurel Street

1408 AND 1410  
N WESTSHORE BLVD

1309  
WARD STREET  
Tampa, FL 33607



FOR LEASE  
**THE TOWERS AT WESTSHORE  
WARD STREET CENTER**

1408 AND 1410  
N WESTSHORE BLVD

1309  
WARD STREET  
Tampa, FL 33607



**CONTACT US**

**PHILIP WEBER**

First Vice President  
+1 813 380 8035  
philip.weber@cbre.com

CBRE, Inc.  
Licensed Real Estate Broker  
101 E Kennedy Blvd, Suite 1500  
Tampa, FL 33602

© 2018 CBRE, Inc. All rights reserved. This information has been obtained from sources believed reliable, but has not been verified for accuracy or completeness. You should conduct a careful, independent investigation of the property and verify all information. Any reliance on this information is solely at your own risk.

Photos herein are the property of their respective owners and use of these images without the express written consent of the owner is prohibited.

