

±6,150 SF AVAILABLE FOR LEASE FIRST FLOOR OFFICE SPACE

4686 ONTARIO MILLS PKWY | ONTARIO, CALIFORNIA 91764



PROPERTY HIGHLIGHTS:

- Class 'A' Office Building
- ±6,150 SF Ground Floor Suite Available
- Divisible to ±3,075 SF Suites
- Elevator Served with Many High End Finishes
- 2008 Construction
- Fully Improved with 4 Offices, Executive Conference Room and Break Room
- 4:1,000 Parking Ratio
- Ideal for Corporate Headquarters
- Great Perimeter Window Line



Lee & Associates® - Ontario
3535 Inland Empire Blvd, Ontario, CA 91764 | 909.989.7771 | lee-assoc.com
Corp ID 00976995

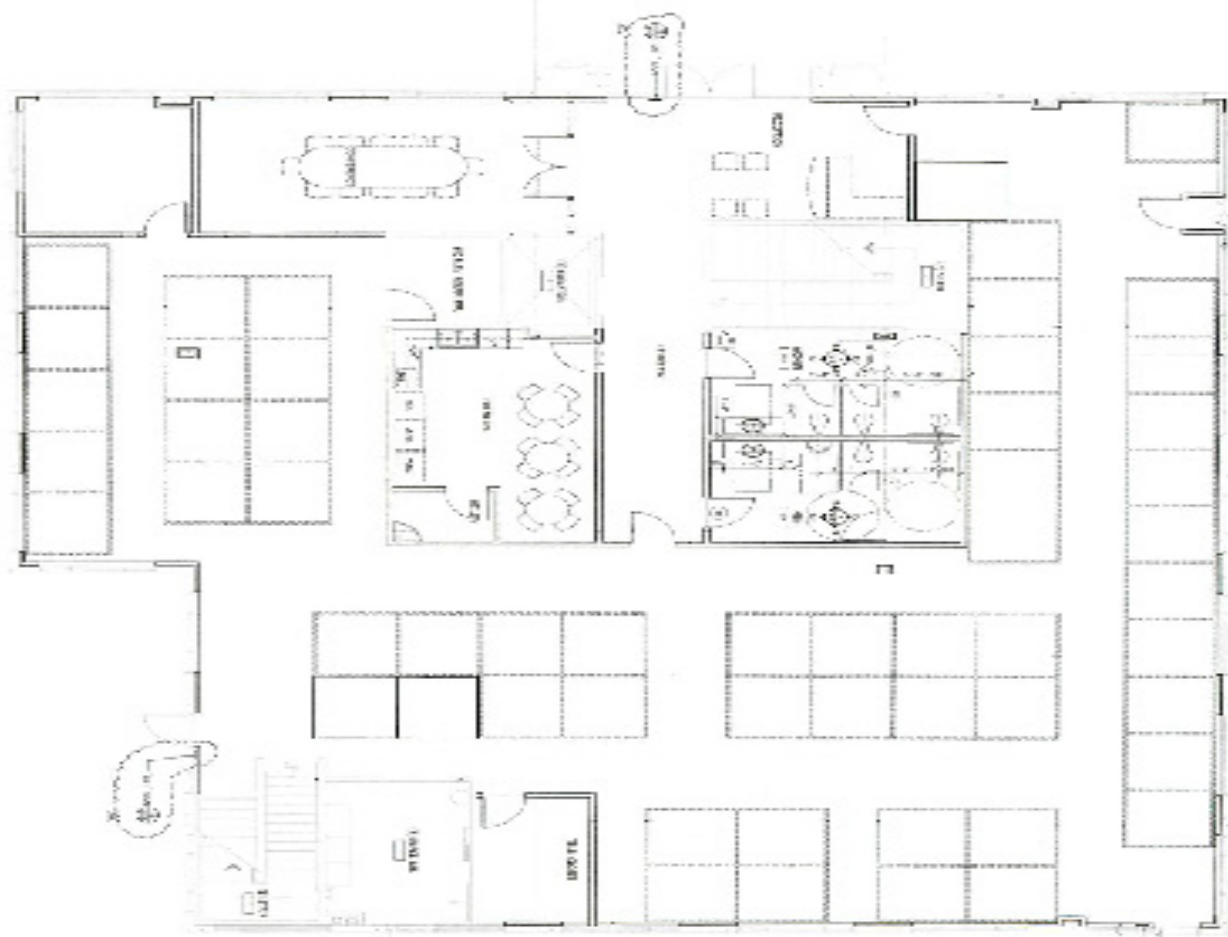
Brian Melkesian
Senior Vice President
909.373.2943
bmelkesian@lee-assoc.com
DRE #01839590

Greg Martin
Senior Vice President
909.373.2904
gmartin@lee-assoc.com
DRE #01001749

±6,150 SF AVAILABLE FOR LEASE FIRST FLOOR OFFICE SPACE

4686 ONTARIO MILLS PKWY | ONTARIO, CALIFORNIA 91764

FLOOR PLAN



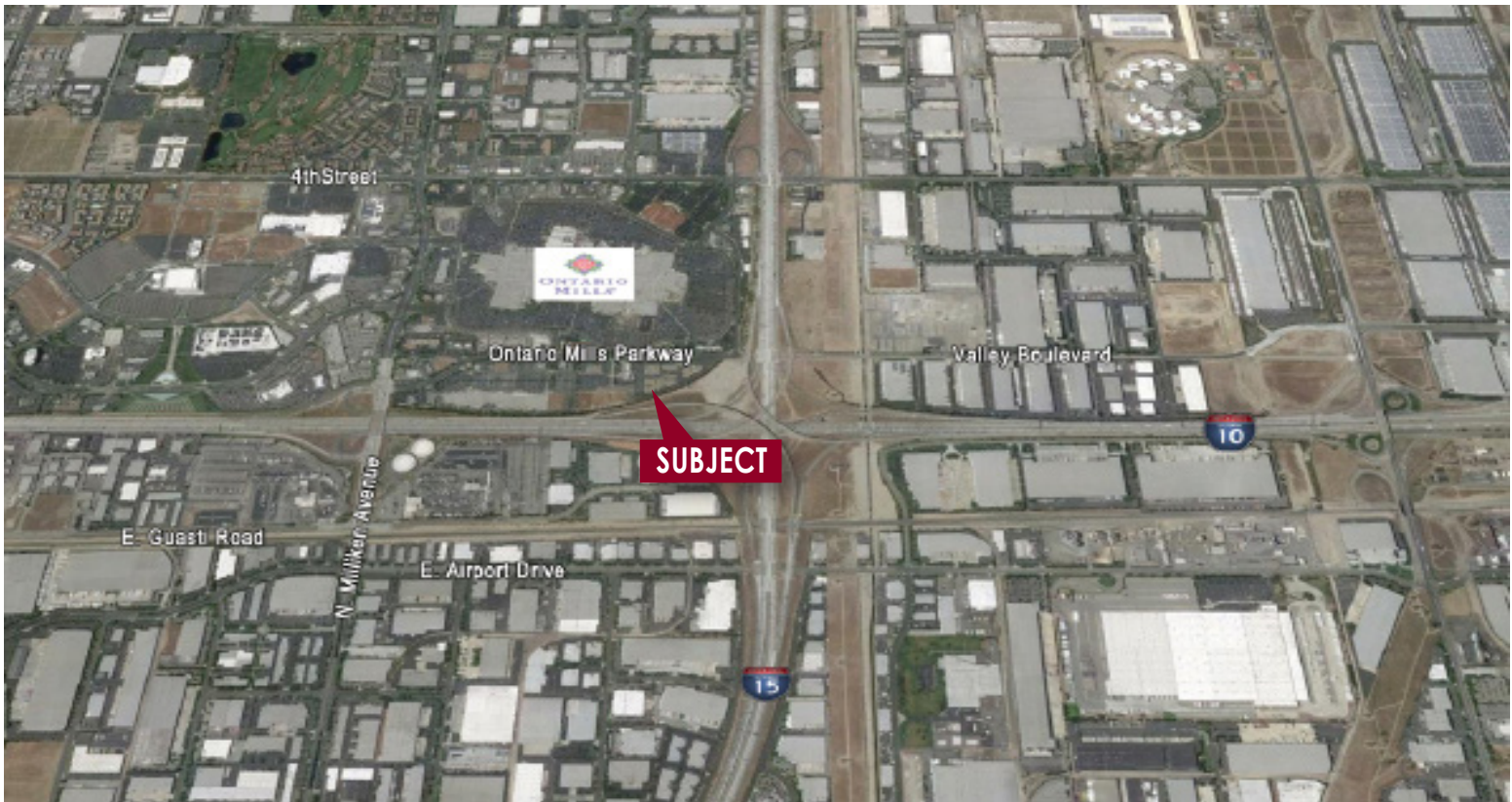
Lee & Associates® - Ontario
3535 Inland Empire Blvd, Ontario, CA 91764 | 909.989.7771 | lee-assoc.com
Corp ID 00976995

Brian Melkesian
Senior Vice President
909.373.2943
bmelkesian@lee-assoc.com
DRE #01839590

Greg Martin
Senior Vice President
909.373.2904
gmartin@lee-assoc.com
DRE #01001749

±6,150 SF AVAILABLE FOR LEASE FIRST FLOOR OFFICE SPACE

4686 ONTARIO MILLS PKWY | ONTARIO, CALIFORNIA 91764



Lee & Associates® - Ontario
3535 Inland Empire Blvd, Ontario, CA 91764 | 909.989.7771 | lee-assoc.com
Corp ID 00976995

Brian Melkesian
Senior Vice President
909.373.2943
bmelkesian@lee-assoc.com
DRE #01839590

Greg Martin
Senior Vice President
909.373.2904
gmartin@lee-assoc.com
DRE #01001749