

1950 CONCEPT DRIVE  
WARREN, MICHIGAN

HI-TECH FOR LEASE  
37,400 Square Feet Available



**SIGNATURE  
ASSOCIATES**  
KNOW SIGNATURE | KNOW RESULTS

**MSX**



## PROPERTY FEATURES

- 37,400 square feet available
- 31,161 square feet of office space available
- Situated on 2.07 acres
- Zoned light industrial, M-2
- Gas forced air heating
- 156 parking spaces
- Excellent office & research & development building
- Very close to I-75 & I-696
- 6,239 sq. ft. rear breezeway can be removed
- Lease Rate: \$5.95/sf NNN



For more information, please contact:

**PAUL HOGE**  
(248) 948 0103  
paulhoge@signatureassociates.com

**SIGNATURE ASSOCIATES**  
One Towne Square, Suite 1200  
Southfield, MI 48076  
www.signatureassociates.com

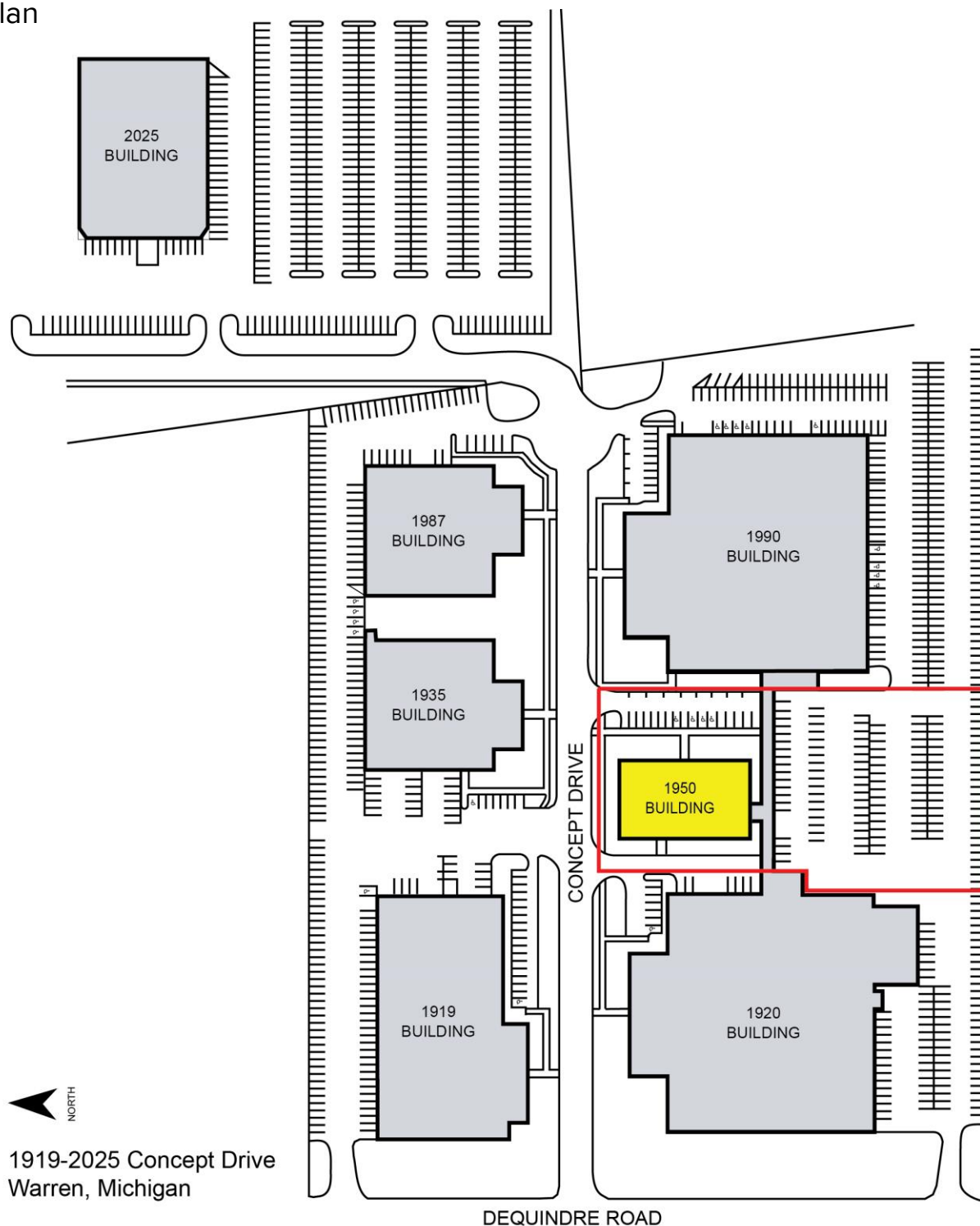
Information is subject to verification and no liability for errors or omissions is assumed. Price is subject to change and listing withdrawal.

# 1950 Concept Drive – Warren, Michigan

## Hi-Tech For Lease

37,400  
Square Feet  
AVAILABLE

### Site Plan



For more information, please contact:

**PAUL HOGE**  
(248) 948 0103  
paulhoge@signatureassociates.com

**SIGNATURE ASSOCIATES**  
One Towne Square, Suite 1200  
Southfield, MI 48076  
www.signatureassociates.com

Information is subject to verification and no liability for errors or omissions is assumed. Price is subject to change and listing withdrawal.

# 1950 Concept Drive – Warren, Michigan

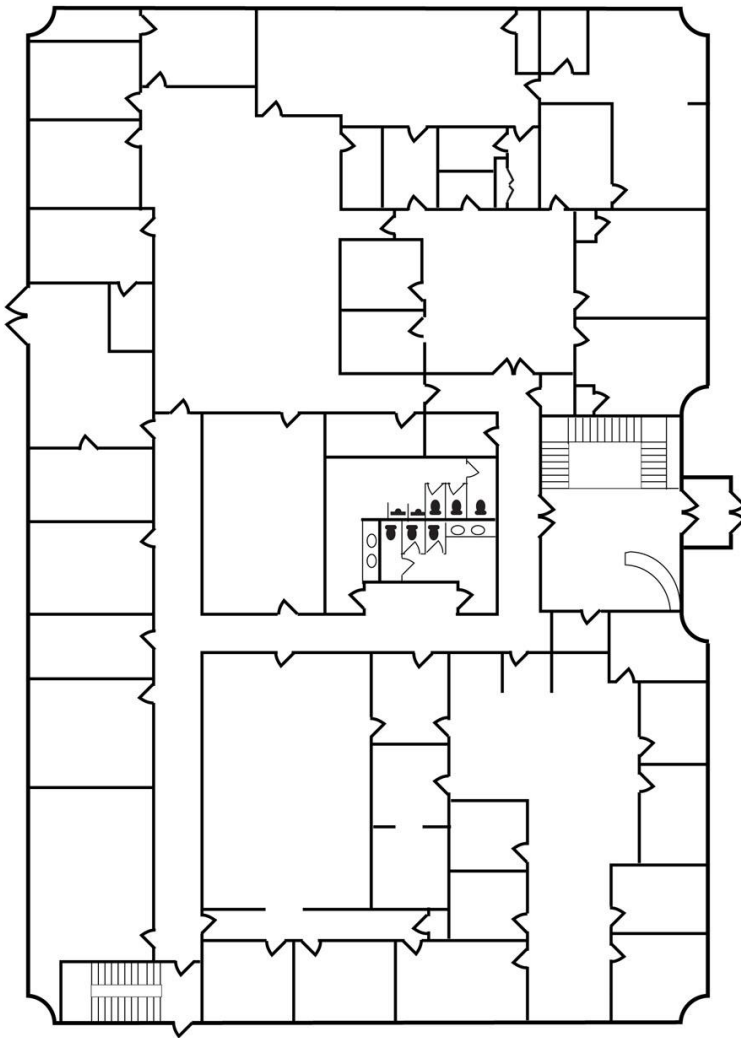
## Hi-Tech For Lease

37,400  
Square Feet  
AVAILABLE

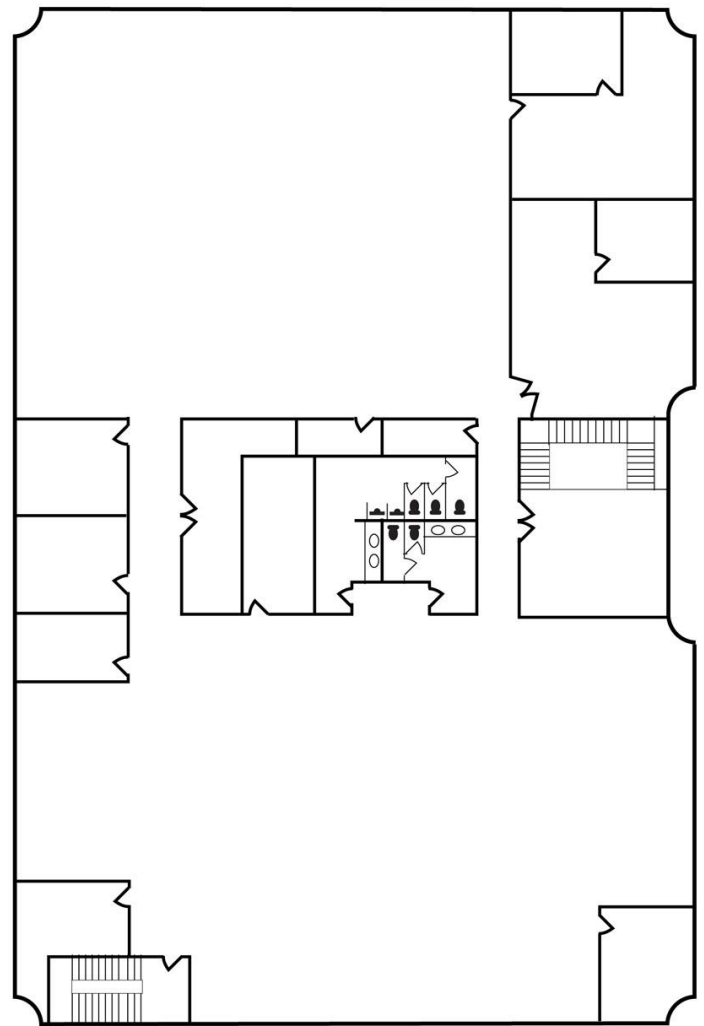
### Floor Plan

1950 Concept Drive - Warren, MI

First Floor



Second Floor



For more information, please contact:

**PAUL HOGE**  
(248) 948 0103  
[paulhoge@signatureassociates.com](mailto:paulhoge@signatureassociates.com)

**SIGNATURE ASSOCIATES**  
One Towne Square, Suite 1200  
Southfield, MI 48076  
[www.signatureassociates.com](http://www.signatureassociates.com)

Information is subject to verification and no liability for errors or omissions is assumed. Price is subject to change and listing withdrawal.