

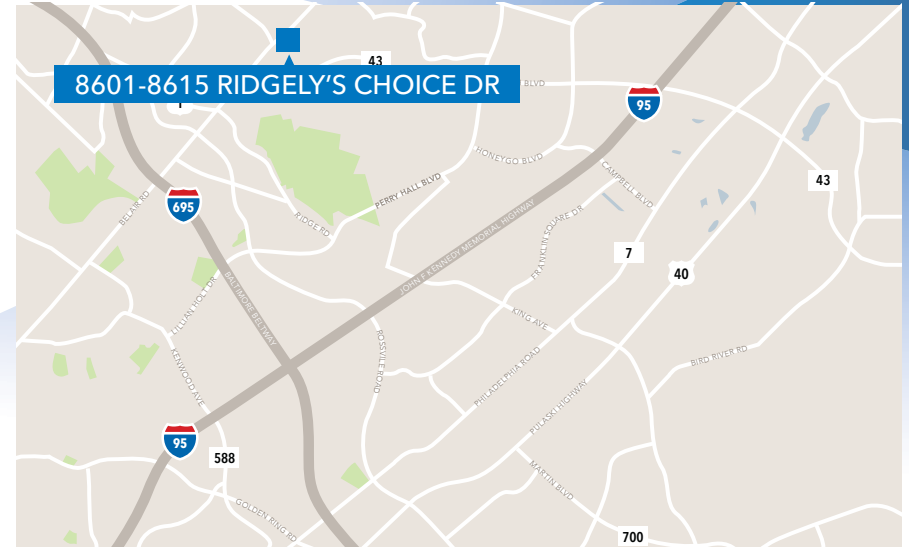


FOR LEASE

8601-8615 RIDGELY'S CHOICE DRIVE

THE SHOPS & OFFICES AT RIDGELY'S CHOICE | BALTIMORE, MARYLAND 21236

 **TRANSWESTERN**[®]



PROPERTY FEATURES

- Located at the signalized intersection of Ridgely's Choice Drive and Belair Road, just north of Route 43 and south of Silver Spring Road
- 37,786 SF of retail/professional office space, as well as a pad site for MedStar PromptCare
- Deli on-site

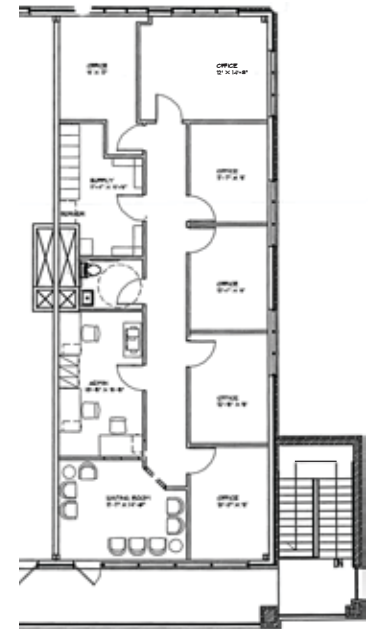
AVAILABLE SPACE

- Suite 212: 1,647 SF

INFORMATION

Brian Siegel
 443.285.7661
 brian.siegel@transwestern.com

Tom Gentner
 443.285.7671
 tom.gentner@transwestern.com



7160 Columbia Gateway Drive
 Suite 210
 Columbia, Maryland 21046

T 443.285.0770
 F 443.285.0660
 www.transwestern.com