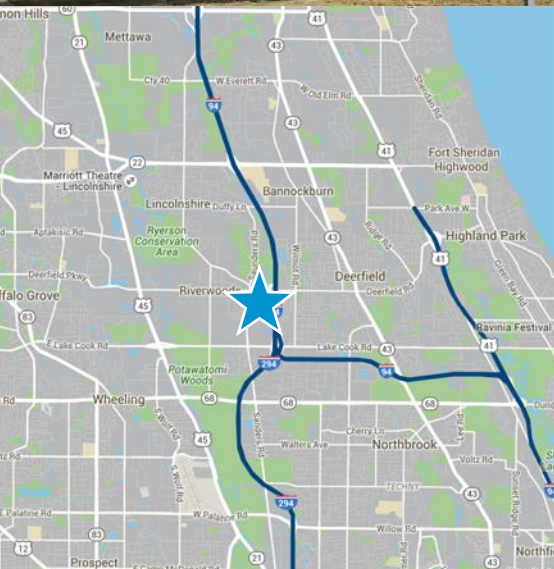


# CLASS A OFFICE OPPORTUNITIES

## ONE PARKWAY NORTH

DEERFIELD, IL



- > 274,006 square-foot Class A office building
- > Strong, institutional ownership and on-site management
- > 24/7 Security
- > 85 acres of landscaped campus with outdoor seating, multiple ponds and more than two miles of activity trails
- > Full-service, multi-station cafe with catering
- > New fitness center
- > Pace bus through park
- > Marriott Suites with meeting, dining and recreational facilities
- > Bright Horizons day care center
- > Life Start - Parkway Athletic Club
- > Estimated Taxes: \$3.42 PSF (2017)
- > Estimated Operating Expenses: \$7.46 PSF (2017)

For more information or to schedule a tour, please contact:

JON CONNOR  
847 698 8246

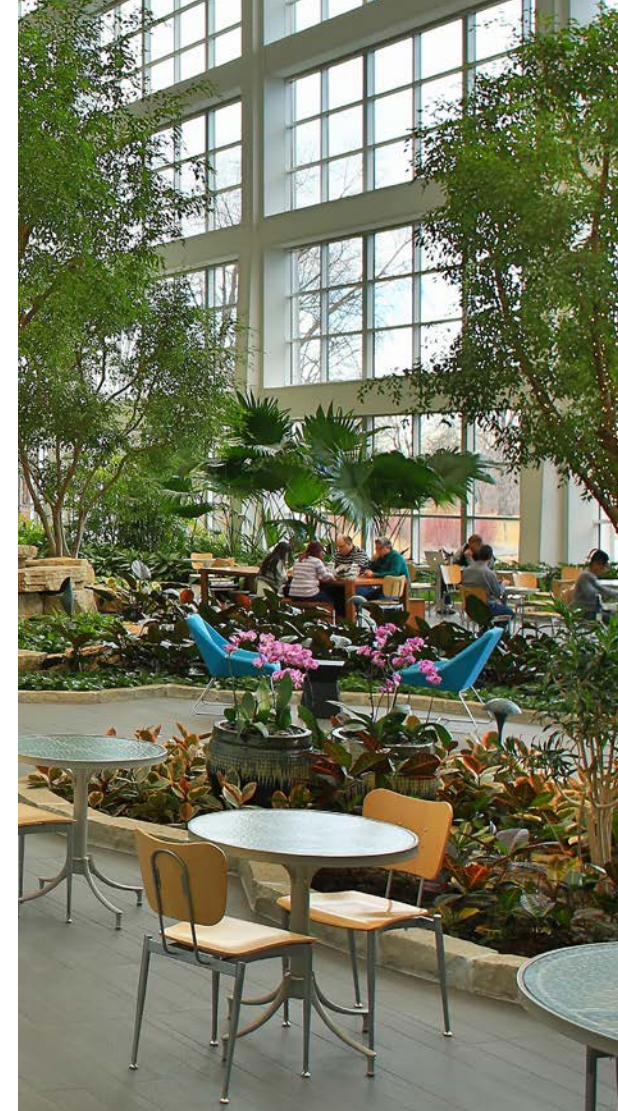
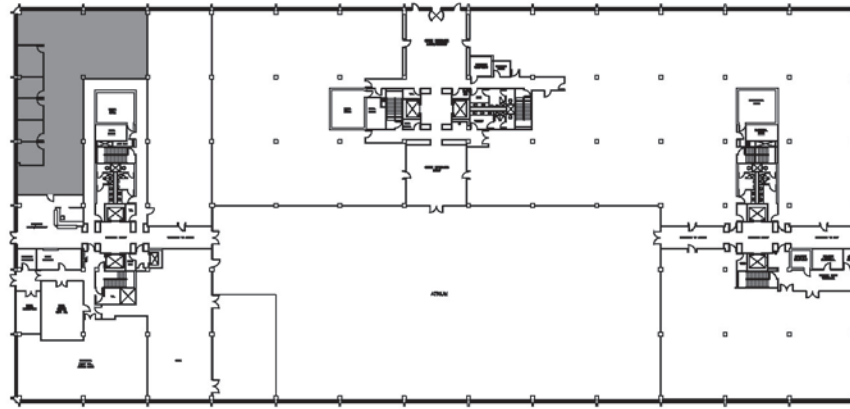
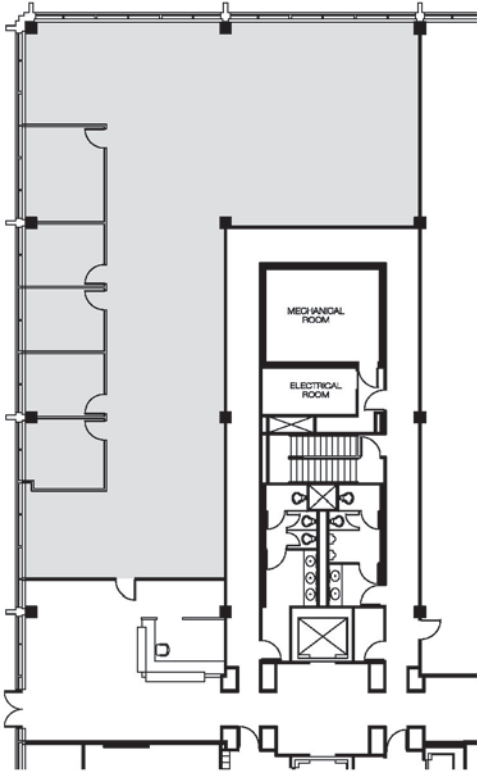
[jonathon.connor@colliers.com](mailto:jonathon.connor@colliers.com)

STEVE KLING  
847 698 8256

[steve.kling@colliers.com](mailto:steve.kling@colliers.com)



**SUITE 100S:** 5,164 RSF  
**ONE PARKWAY NORTH**  
DEERFIELD, IL

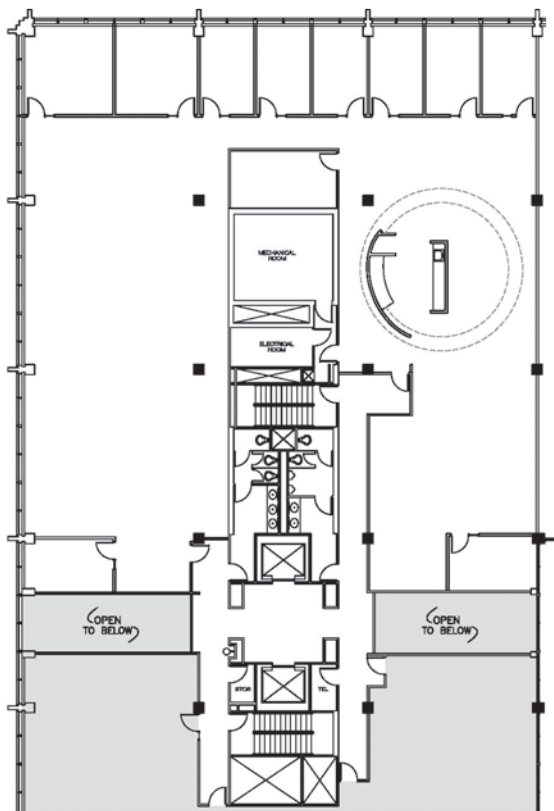


JON CONNOR  
847 698 8246  
[jonathon.connor@colliers.com](mailto:jonathon.connor@colliers.com)

STEVE KLING  
847 698 8256  
[steve.kling@colliers.com](mailto:steve.kling@colliers.com)



**SUITE 200S:** 9,498 RSF  
**ONE PARKWAY NORTH**  
DEERFIELD, IL

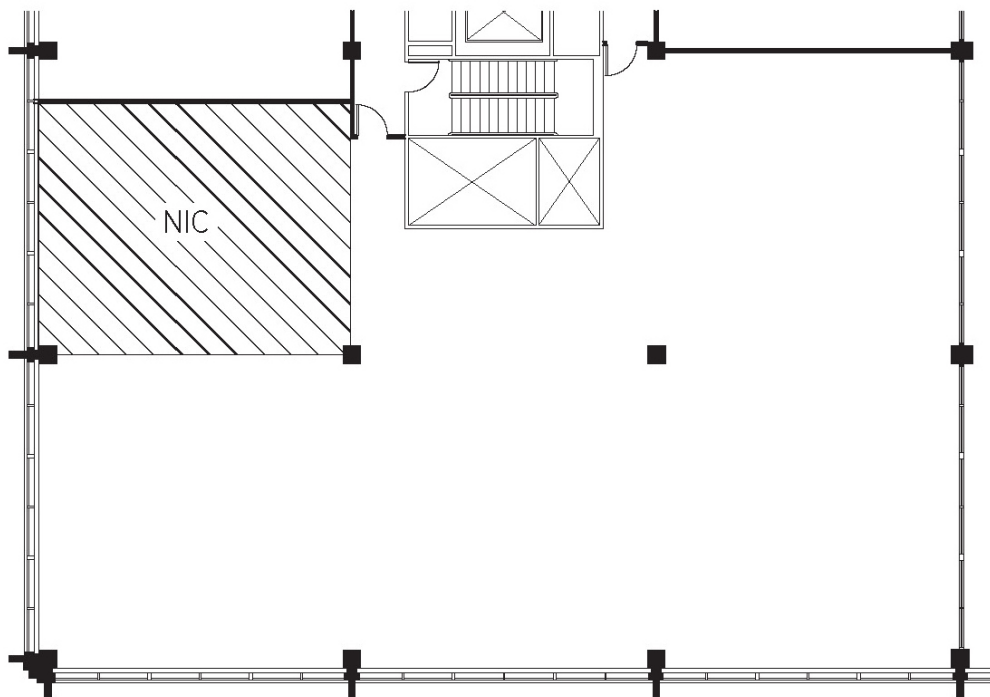
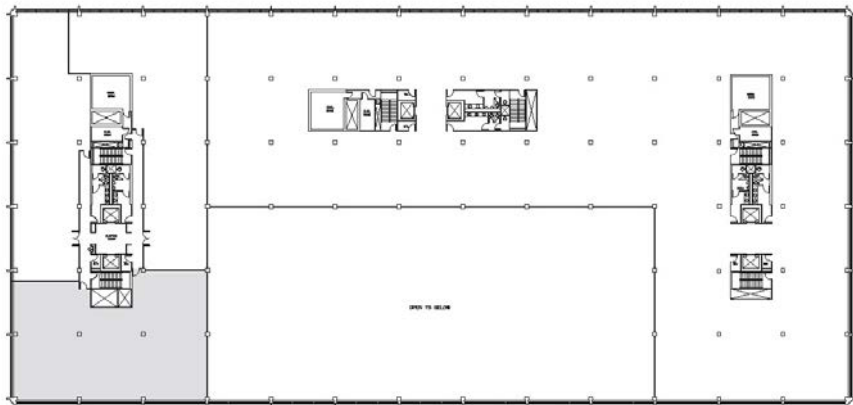


JON CONNOR  
847 698 8246  
[jonathon.connor@colliers.com](mailto:jonathon.connor@colliers.com)

STEVE KLING  
847 698 8256  
[steve.kling@colliers.com](mailto:steve.kling@colliers.com)



**SUITE 525S:** 5,249 RSF  
**ONE PARKWAY NORTH**  
DEERFIELD, IL



JON CONNOR  
847 698 8246  
[jonathon.connor@colliers.com](mailto:jonathon.connor@colliers.com)

STEVE KLING  
847 698 8256  
[steve.kling@colliers.com](mailto:steve.kling@colliers.com)



← NORTH



## AREA NEIGHBORS

# ONE PARKWAY NORTH DEERFIELD, IL

- |  |   |  |
|--|---|--|
| 1. NINE PARKWAY NORTH  | 5. FIVE PARKWAY NORTH<br>Bright Horizons<br>LifeStart - Parkway Athletic Club                           | 7. MARRIOTT SUITES                     |
| 2. TEN PARKWAY NORTH<br>Markel Corporation                         | 6. THREE PARKWAY NORTH<br>Mondelez International<br>Pharmaceutical Research Associates<br>GCG Financial | 8. FOUR PARKWAY NORTH<br>CF Industries |
| 3. WOODVIEW APARTMENTS   |   | 9. BAXTER CAMPUS                       |
| 4. SIX PARKWAY NORTH<br>Walgreens University Campus<br>Lundbeck US |   | 10. TAKEDA CAMPUS                      |
|  |   | 11. DISCOVER CAMPUS                    |

JON CONNOR  
847 698 8246  
[jonathon.connor@colliers.com](mailto:jonathon.connor@colliers.com)

STEVE KLING  
847 698 8256  
[steve.kling@colliers.com](mailto:steve.kling@colliers.com)





**LOBBY**

**ONE PARKWAY NORTH**

DEERFIELD, IL

JON CONNOR  
847 698 8246  
[jonathon.connor@colliers.com](mailto:jonathon.connor@colliers.com)

STEVE KLING  
847 698 8256  
[steve.kling@colliers.com](mailto:steve.kling@colliers.com)





**FULL-SERVICE CAFE**  
**ONE PARKWAY NORTH**  
DEERFIELD, IL

JON CONNOR  
847 698 8246  
[jonathon.connor@colliers.com](mailto:jonathon.connor@colliers.com)

STEVE KLING  
847 698 8256  
[steve.kling@colliers.com](mailto:steve.kling@colliers.com)





**WINTERGARDEN CAFE**  
**ONE PARKWAY NORTH**  
DEERFIELD, IL

JON CONNOR  
847 698 8246  
[jonathon.connor@colliers.com](mailto:jonathon.connor@colliers.com)

STEVE KLING  
847 698 8256  
[steve.kling@colliers.com](mailto:steve.kling@colliers.com)



# FITNESS CENTER

# ONE PARKWAY NORTH

DEERFIELD, IL



JON CONNOR  
847 698 8246  
[jonathon.connor@colliers.com](mailto:jonathon.connor@colliers.com)

STEVE KLING  
847 698 8256  
[steve.kling@colliers.com](mailto:steve.kling@colliers.com)

