

FOR LEASE

# 1102 BROADWAY

TACOMA, WASHINGTON 98402



**AVAILABLE NOW**

**\$23.00 - \$25.00 | FULLY SERVICED**

**Floor**

2nd

**Suite**

203

**Size**

2,579 SF



**CONTACT US**

**JOHN BAUDER**

First Vice President  
+1 253 596 0047  
john.bauder@cbre.com

**HARRISON LAIRD**

Senior Associate  
+1 253 596 0030  
harrison.laird@cbre.com

CBRE  
1201 Pacific Avenue  
Suite, 1502  
Tacoma, WA 98402

[www.cbre.us/tacoma](http://www.cbre.us/tacoma)

**CBRE**

Tacoma, Washington 98402



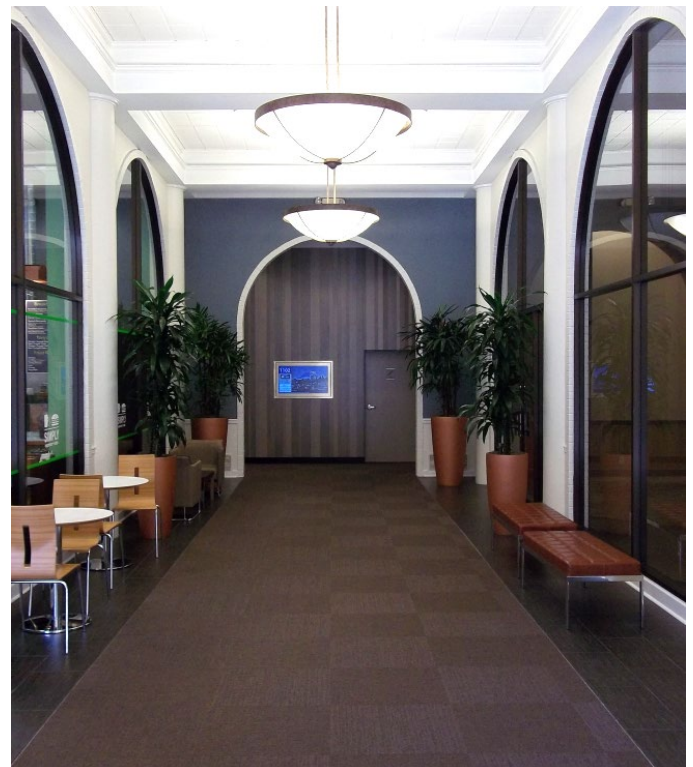
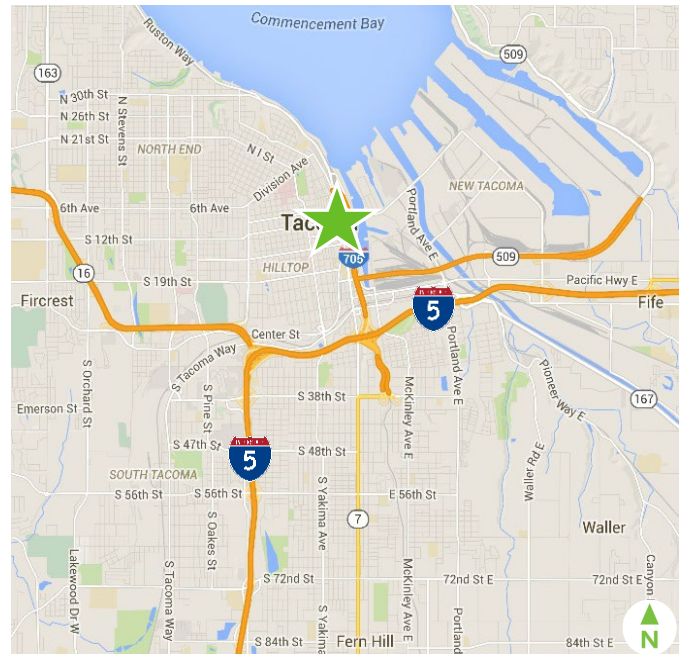
## PROPERTY FEATURES

- + 2/1,000 parking at the building
- + High-end build-out
- + New elevators
- + Professionally managed by CBRE
- + On-site deli



## AREA AMENITIES

- + Excellent access to I-705, I-5, Pierce County Transit and Tacoma Light Rail
- + Numerous restaurants, hotels and retail amenities
- + Located in the heart of downtown Tacoma



© 2019 CBRE, Inc. This information has been obtained from sources believed reliable. We have not verified it and make no guarantee, warranty or representation about it. Any projections, opinions, assumptions or estimates used are for example only and do not represent the current or future performance of the property. You and your advisors should conduct a careful, independent investigation of the property to determine to your satisfaction the suitability of the property for your needs. Photos herein are the property of their respective owners and use of these images without the express written consent of the owner is prohibited. CBRE and the CBRE logo are service marks of CBRE, Inc. and/or its affiliated or related companies in the United States and other countries. All other marks displayed on this document are the property of their respective owners.

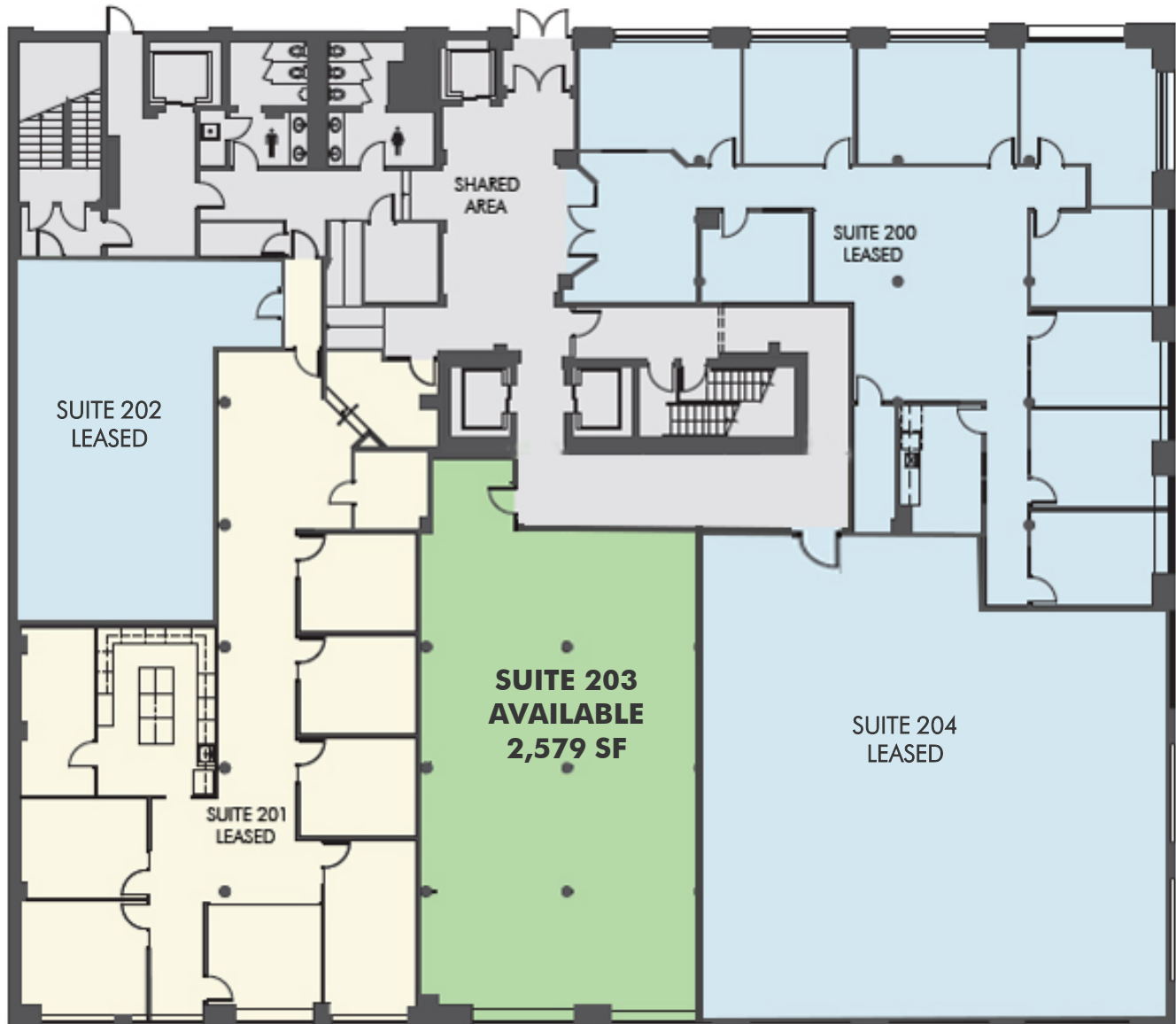
**[www.cbre.us/tacoma](http://www.cbre.us/tacoma)**



# FOR LEASE 1102 BROADWAY

Tacoma, Washington 98402

## 2ND FLOOR



### CONTACT US

#### JOHN BAUDER

First Vice President  
+1 253 596 0047  
john.bauder@cbre.com

#### HARRISON LAIRD

Senior Associate  
+1 253 596 0030  
harrison.laird@cbre.com

CBRE  
1201 Pacific Avenue  
Suite, 1502  
Tacoma, WA 98402

[www.cbre.us/tacoma](http://www.cbre.us/tacoma)

# CBRE