

AVAILABLE >

# ROBBINS EXECUTIVE PARK 750 BUILDING

750 STEPHENSON HIGHWAY | TROY, MI



## BUILDING SIGNAGE AVAILABLE

### > PROPERTY HIGHLIGHTS

- Highly Visible Troy Office Property Available Containing 135,163 Total SF
- Total of 101,484 SF Available Immediately On Floors 4, 5, 6 and 7 Plus Potential Room for Expansion
- Signage and Visibility from I-75 and Adjacent to Oakland Mall
- Over 480 Parking Spaces Available With Room For Expansion
- Cafeteria Onsite and Near Numerous Amenities Including Shopping, Restaurants and Hotel

**COLLIERS INTERNATIONAL**  
2 Corporate Drive | Suite 300  
Southfield, Michigan 48076



**GARY P. GROCHOWSKI, SIOR**  
248 540 1000 Ext 1856  
gary.grochowski@colliers.com



**BRYAN BARNAS**  
248 540 1000 Ext 1638  
bryan.barnas@colliers.com



**ROBERT BADGERO**  
248 540 1000 Ext 1810  
robert.badgero@colliers.com



**STEVEN BADGERO**  
248 540 1000 Ext 1812  
steven.badgero@colliers.com



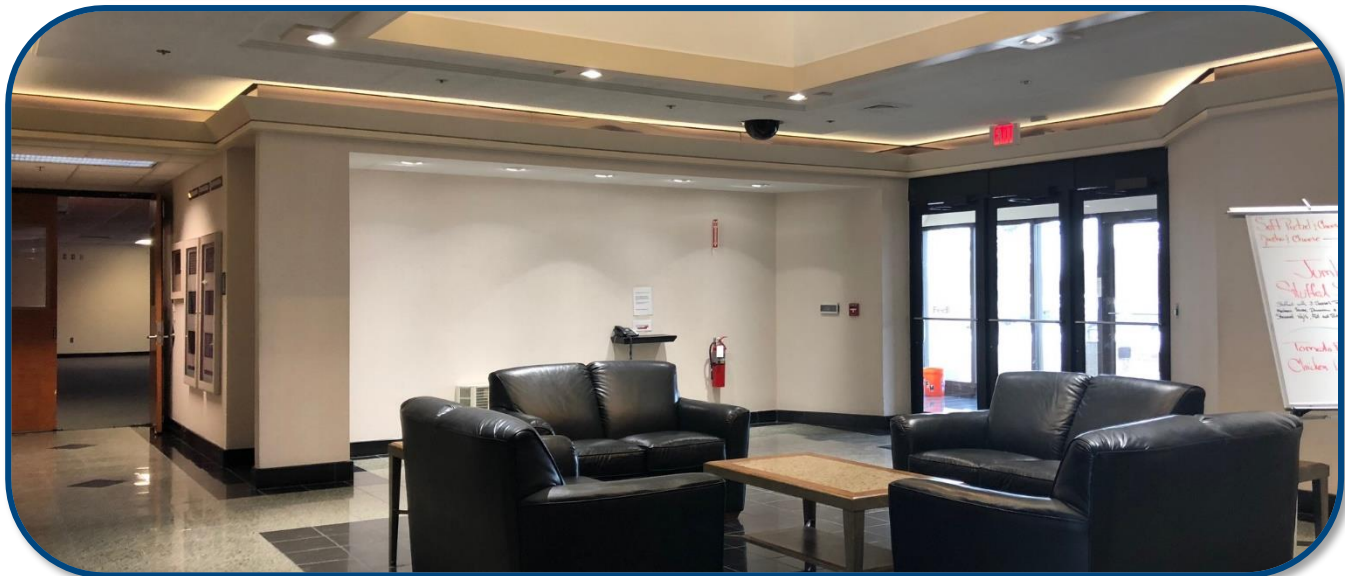
FOR SALE or LEASE > OFFICE

# ROBBINS EXECUTIVE PARK 750 BUILDING

750 STEPHENSON HIGHWAY | TROY, MI



## > LOBBY AND CAFETERIA



**GARY P. GROCHOWSKI, SIOR**  
248 540 1000 Ext 1856  
gary.grochowski@colliers.com

**ROBERT BADGERO**  
248 540 1000 Ext 1810  
robert.badgero@colliers.com

**BRYAN BARNAS**  
248 540 1000 Ext 1638  
bryan.barnas@colliers.com

**STEVEN BADGERO**  
248 540 1000 Ext 1812  
steven.badgero@colliers.com

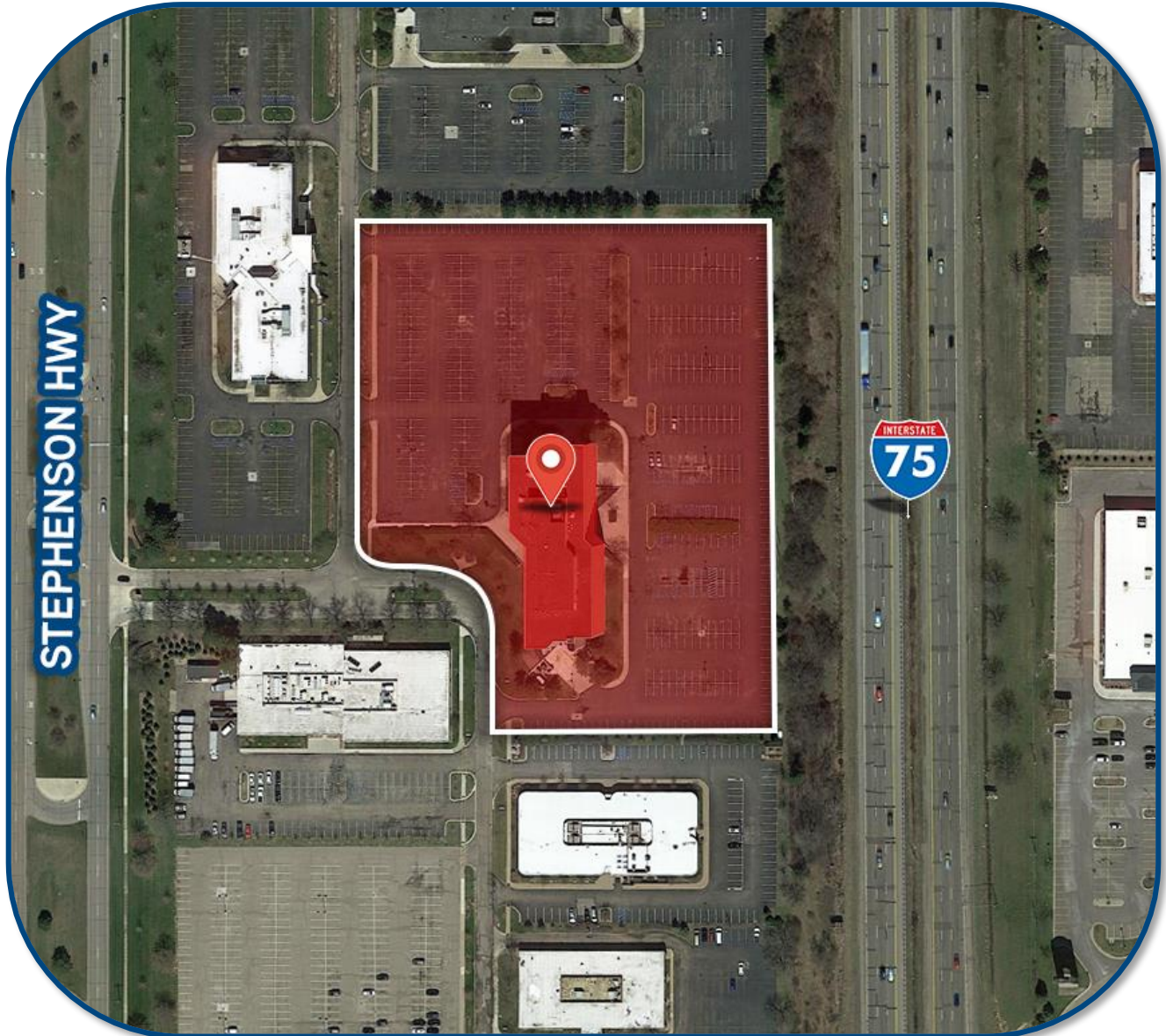
FOR SALE or LEASE > OFFICE

# ROBBINS EXECUTIVE PARK 750 BUILDING

750 STEPHENSON HIGHWAY | TROY, MI



## > AERIAL MAP



**GARY P. GROCHOWSKI, SIOR**  
248 540 1000 Ext 1856  
gary.grochowski@colliers.com

**ROBERT BADGERO**  
248 540 1000 Ext 1810  
robert.badgero@colliers.com

**BRYAN BARNAS**  
248 540 1000 Ext 1638  
bryan.barnas@colliers.com

**STEVEN BADGERO**  
248 540 1000 Ext 1812  
steven.badgero@colliers.com

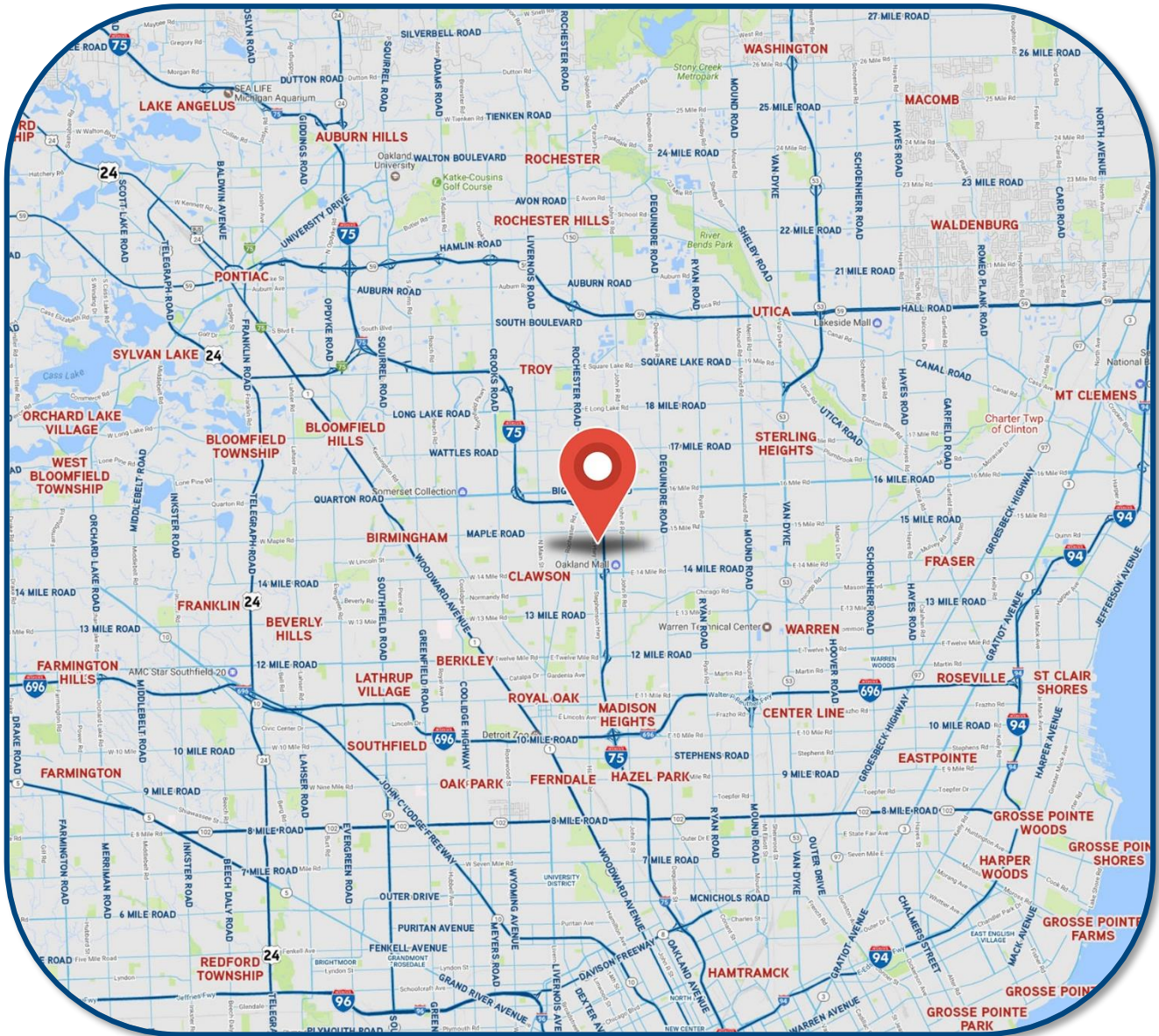
FOR SALE or LEASE > OFFICE

# ROBBINS EXECUTIVE PARK 750 BUILDING



750 STEPHENSON HIGHWAY | TROY, MI

## > LOCATION MAP



**GARY P. GROCHOWSKI, SIOR**  
248 540 1000 Ext 1856  
gary.grochowski@colliers.com

**ROBERT BADGERO**  
248 540 1000 Ext 1810  
robert.badgero@colliers.com

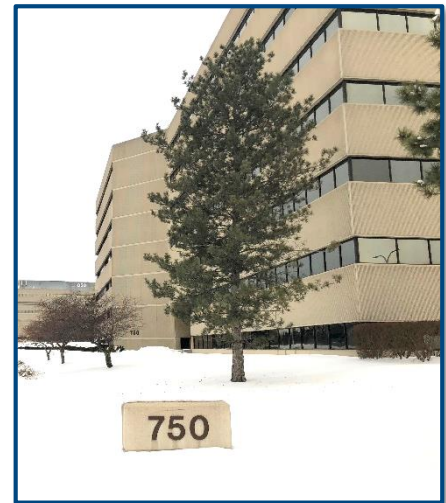
**BRYAN BARNAS**  
248 540 1000 Ext 1638  
bryan.barnas@colliers.com

**STEVEN BADGERO**  
248 540 1000 Ext 1812  
steven.badgero@colliers.com

## ROBBINS EXECUTIVE PARK 750 BUILDING

750 STEPHENSON HIGHWAY  
TROY, MI

- Highly Visible Troy Office Property Available Containing 135,163 Total SF
- Total of 101,484 SF Available Immediately On Floors 4, 5, 6 and 7 Plus Potential Room for Expansion
- Signage and Visibility from I-75 and Adjacent to Oakland Mall
- Over 480 Parking Spaces Available With Room For Expansion
- Cafeteria Onsite and Near Numerous Amenities Including Shopping, Restaurants and Hotel



<u>SUITE</u>	<u>SF AVAILABLE</u>	<u>LEASE RATE</u> <u>\$/SF</u>	<u>OCCUPANCY</u>
Suite 100	8,960	\$13.50/SF Gross Plus Electric	Immediate
Suite 200	9,576	\$13.50/SF Gross Plus Electric	Immediate
4 <sup>th</sup> Floor	19,742	\$13.50/SF Gross Plus Electric	30 Days
5 <sup>th</sup> Floor	19,742	\$13.50/SF Gross Plus Electric	30 Days
6 <sup>th</sup> Floor	19,742	\$13.50/SF Gross Plus Electric	30 Days
7 <sup>th</sup> Floor	21,718	\$13.50/SF Gross Plus Electric	30 Days

# Office Availability

## For Lease

### Robbins Executive Park 750 Building

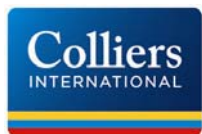
750 Stephenson Highway

Troy, MI 48083



**Sale Price:**  
**Lease Rate :** \$13.50 Gross + Electric  
**Gross Sq Ft:** 135,163  
**Vacant Sq Ft:** 101,484  
**Min Available Sq Ft:** 8,960  
**Max Contiguous Sq Ft:** 21,718  
**% Occupied:**  
**Date Built/Rehab:** 1979 / 1991  
**T I Allowance:** TBD  
**Pass Thrus:** Base Year  
**Property Taxes/Year:**  
**Parking:** Ratio: 3.82/1,000 SF

#### For more information, contact:



#### Gary Grochowski, SIOR

gary.grochowski@colliers.com

#### Bryan Barnas

bryan.barnas@colliers.com

#### Robert Badgero

robert.badgero@colliers.com

**(248) 540-1000**

2 Corporate Drive  
Suite 300  
Southfield, MI 48076  
248 540 1000

400 E. Washington St.  
Ann Arbor, MI 48104  
734 994 3100

[www.colliers.com](http://www.colliers.com)

**County:** Oakland  
**Crossroads:** Stephenson Hwy & 14 Mile Road

- Highly Visible Troy Office Property Available Containing 135,163 Total SF

- Total of 101,484 SF Available Immediately On Floors 4, 5, 6 and 7 Plus Potential Room for Expansion

- Signage and Visibility from I-75 and Adjacent to Oakland Mall  
- Over 480 Parking Spaces Available With Room For Expansion

- Cafeteria Onsite and Near Numerous Amenities Including Shopping, Restaurants and Hotel

**Site Status:** Existing  
**Acres:** 7.55  
**Zoning:** OM = Office Mixed Use  
**Sub-Type:** Office  
**Floors:** 7  
**Basement:** No  
**Class:** B