



FOR LEASE

Oak Ridge East Professional Building

675 Nicollet Blvd. E.
Burnsville, MN



HOME

HIGHLIGHTS

AVAILABLE

LOCATION

For more information, please contact:

Eric King
Senior Director
+1 651 734 2385
eric.king@cushwake.com

Ann Stahley
Director
+1 952 465 3317
ann.stahley@cushwake.com

Cushman & Wakefield
3500 American Blvd W Suite 200
Minneapolis, MN 55431
cushmanwakefield.com

Oak Ridge East Professional Building

675 Nicollet Blvd. E., Burnsville, MN



HOME

HIGHLIGHTS

AVAILABLE

LOCATION

Property Highlights

- Class A Medical Office Space
- Easy access from I-35W and I-35E
- Just blocks from the Fairview Ridges Campus
- Underground parking garage
- Climate controlled document storage
- Attractive common area with planter garden and fountain
- Two-story atrium and skylight
- ADA compliant restrooms

BUILDING INFORMATION

BUILDING SIZE	52,391 sq. ft.
YEAR BUILT	2001
FLOORS	2
AVAILABILITY	1,433 - 10,454 sq. ft.
LEASE RATE	\$34.00 Gross per sq. ft.
2016 ESTIMATED TAX & OPER. EXP.	\$4.24 per sq. ft.



For more information, please contact:

Eric King
Senior Director
+1 651 734 2385
eric.king@cushwake.com

Ann Stahley
Director
+1 952 465 3317
ann.stahley@cushwake.com

Cushman & Wakefield
3500 American Blvd W Suite 200
Minneapolis, MN 55431
cushmanwakefield.com

Oak Ridge East Professional Building

675 Nicollet Blvd. E., Burnsville, MN



HOME

HIGHLIGHTS

AVAILABLE

LOCATION

Space Available

Click Suite # to View Floorplan

*Contiguous

Suite Number	Square Footage	Available
*200	6,445	180 days
*215	1,697	180 days
*225	1,433	Now
*230	2,753	Now
*200/215/225	10,454	180 days
245	3,432	1/1/19



For more information, please contact:

Eric King
Senior Director
+1 651 734 2385
eric.king@cushwake.com

Ann Stahley
Director
+1 952 465 3317
ann.stahley@cushwake.com

Cushman & Wakefield
3500 American Blvd W Suite 200
Minneapolis, MN 55431
cushmanwakefield.com

Oak Ridge East Professional Building

675 Nicollet Blvd. E., Burnsville, MN

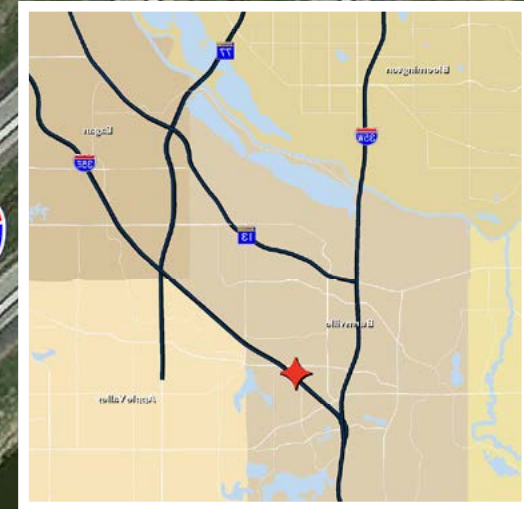
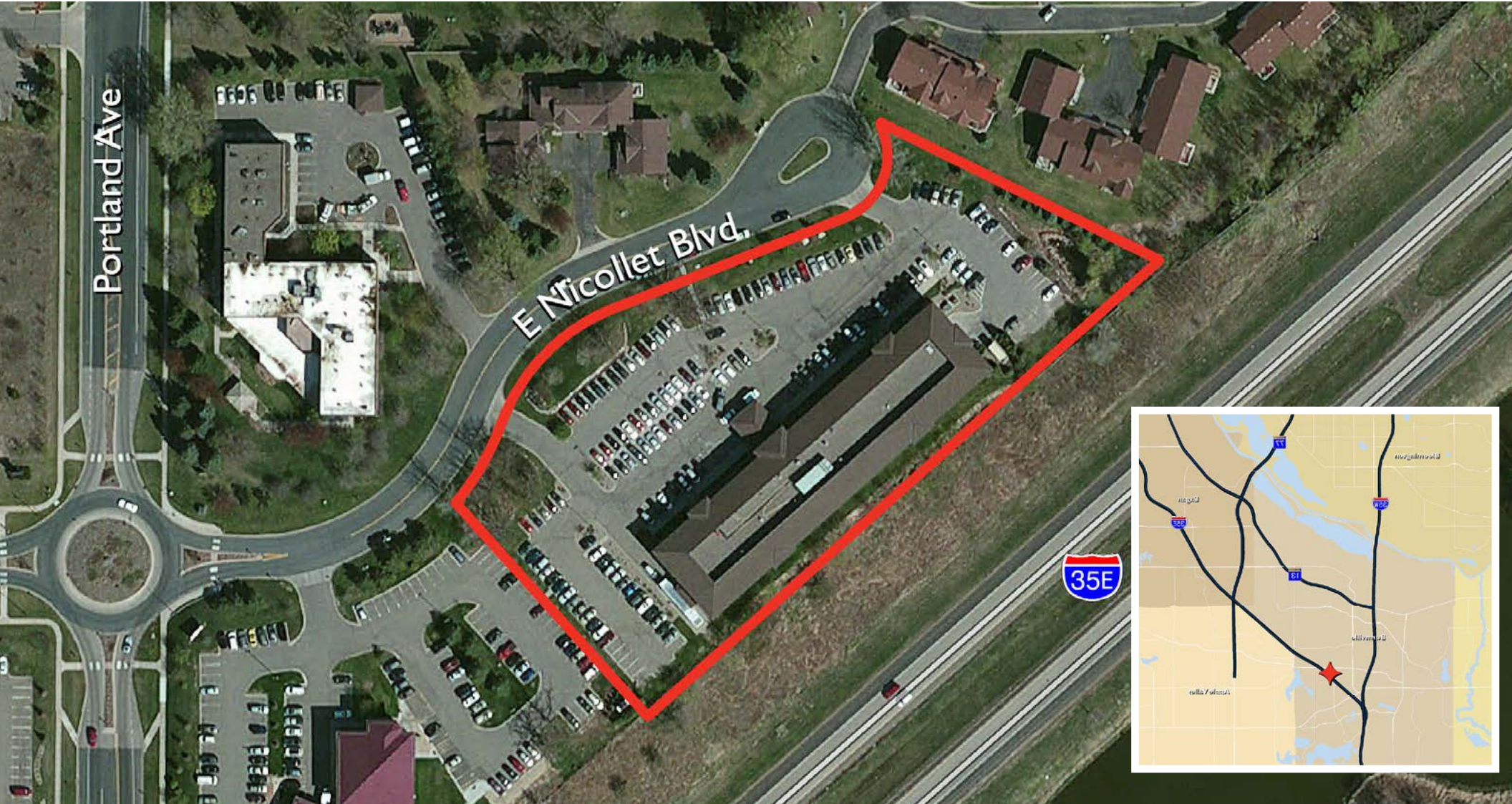


HOME

HIGHLIGHTS

AVAILABLE

LOCATION



For more information, please contact:

Eric King
Senior Director
+1 651 734 2385
eric.king@cushwake.com

Ann Stahley
Director
+1 952 465 3317
ann.stahley@cushwake.com

Cushman & Wakefield
3500 American Blvd W Suite 200
Minneapolis, MN 55431
cushmanwakefield.com

Oak Ridge East Professional Building

675 Nicollet Blvd. E., Burnsville, MN



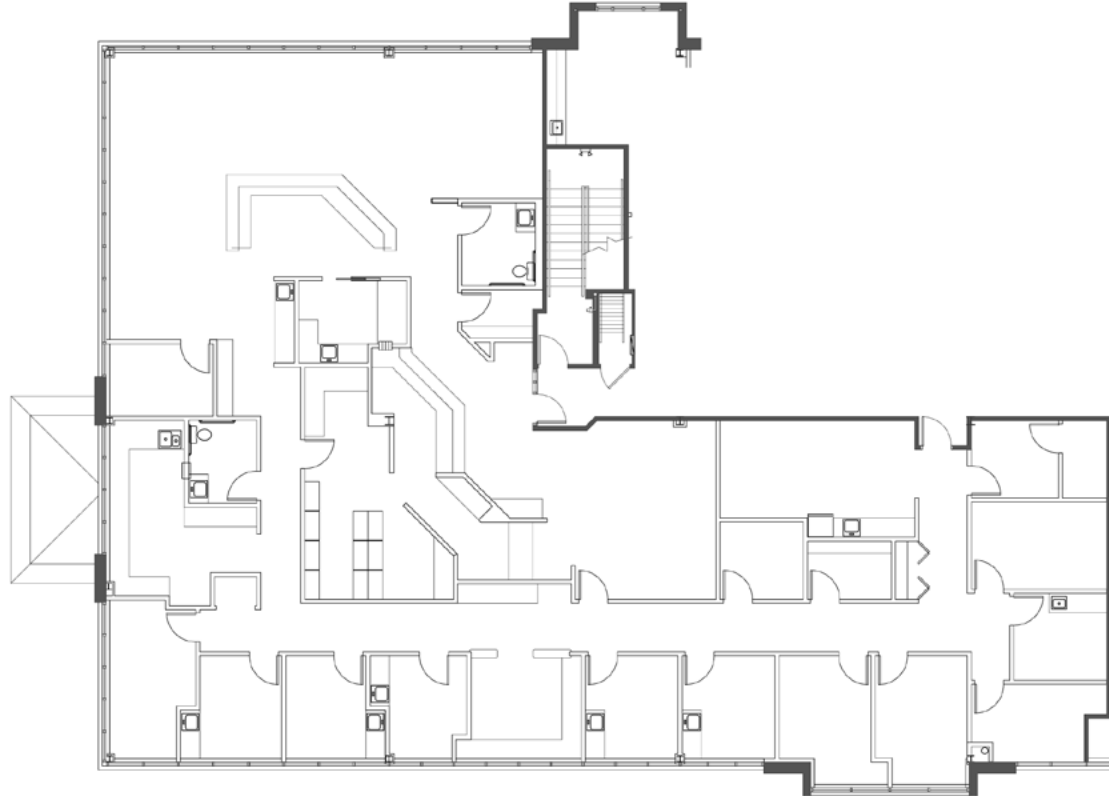
HOME

HIGHLIGHTS

AVAILABLE

LOCATION

Suite 200
6,445 RSF



For more information, please contact:

Eric King
Senior Director
+1 651 734 2385
eric.king@cushwake.com

Ann Stahley
Director
+1 952 465 3317
ann.stahley@cushwake.com

Cushman & Wakefield
3500 American Blvd W Suite 200
Minneapolis, MN 55431
cushmanwakefield.com

Oak Ridge East Professional Building

675 Nicollet Blvd. E., Burnsville, MN



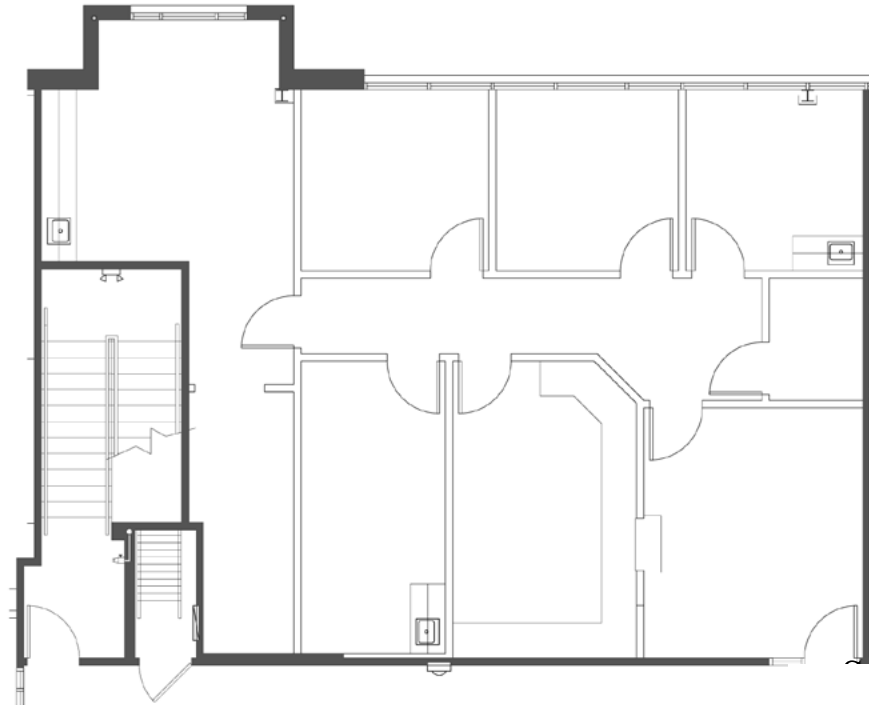
HOME

HIGHLIGHTS

AVAILABLE

LOCATION

Suite 215
1,697 RSF



For more information, please contact:

Eric King
Senior Director
+1 651 734 2385
eric.king@cushwake.com

Ann Stahley
Director
+1 952 465 3317
ann.stahley@cushwake.com

Cushman & Wakefield
3500 American Blvd W Suite 200
Minneapolis, MN 55431
cushmanwakefield.com

Oak Ridge East Professional Building

675 Nicollet Blvd. E., Burnsville, MN



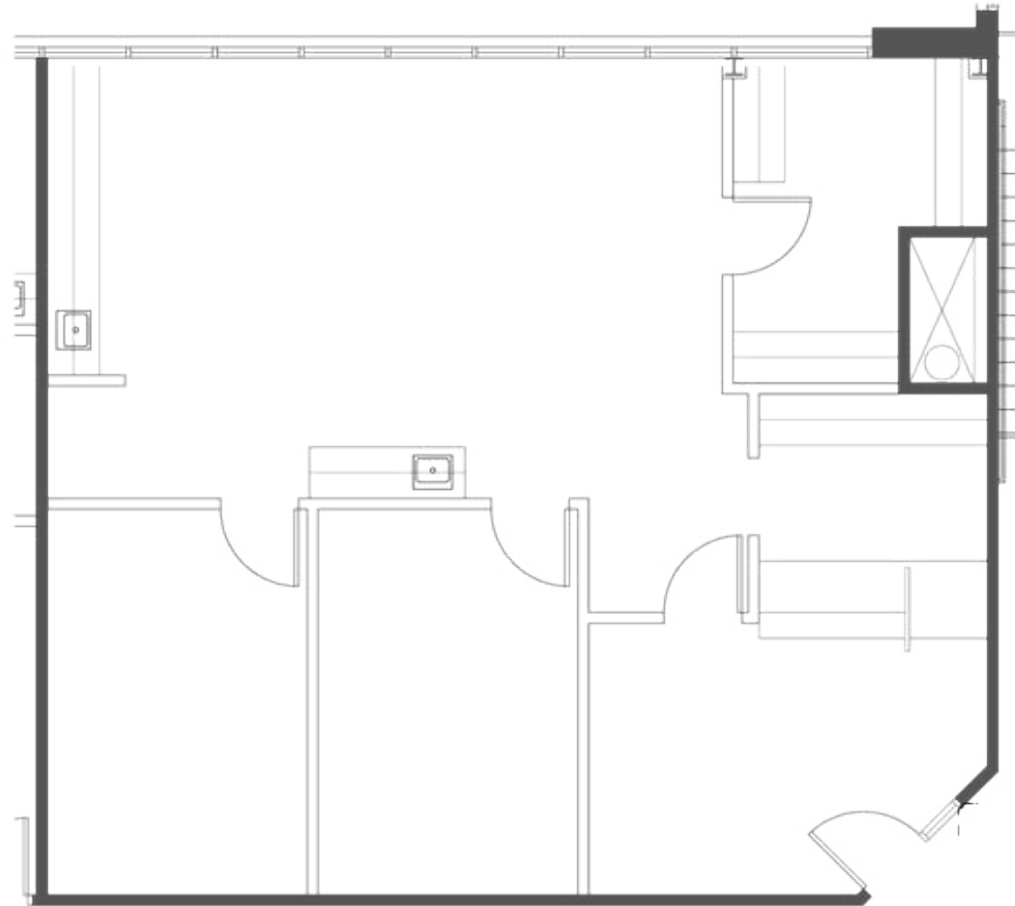
HOME

HIGHLIGHTS

AVAILABLE

LOCATION

Suite 225
1,433 RSF



For more information, please contact:

Eric King
Senior Director
+1 651 734 2385
eric.king@cushwake.com

Ann Stahley
Director
+1 952 465 3317
ann.stahley@cushwake.com

Cushman & Wakefield
3500 American Blvd W Suite 200
Minneapolis, MN 55431
cushmanwakefield.com

Oak Ridge East Professional Building

675 Nicollet Blvd. E., Burnsville, MN



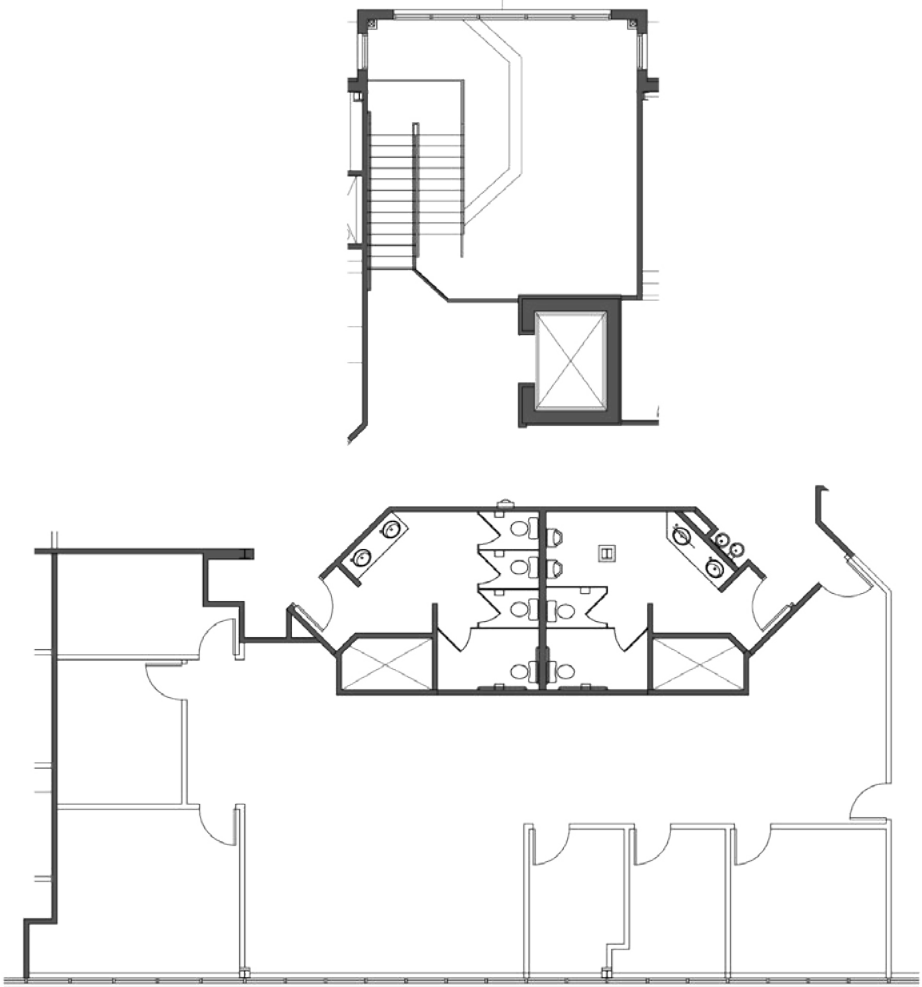
HOME

HIGHLIGHTS

AVAILABLE

LOCATION

Suite 230
2,753 RSF



For more information, please contact:

Eric King
Senior Director
+1 651 734 2385
eric.king@cushwake.com

Ann Stahley
Director
+1 952 465 3317
ann.stahley@cushwake.com

Cushman & Wakefield
3500 American Blvd W Suite 200
Minneapolis, MN 55431
cushmanwakefield.com

Oak Ridge East Professional Building

675 Nicollet Blvd. E., Burnsville, MN



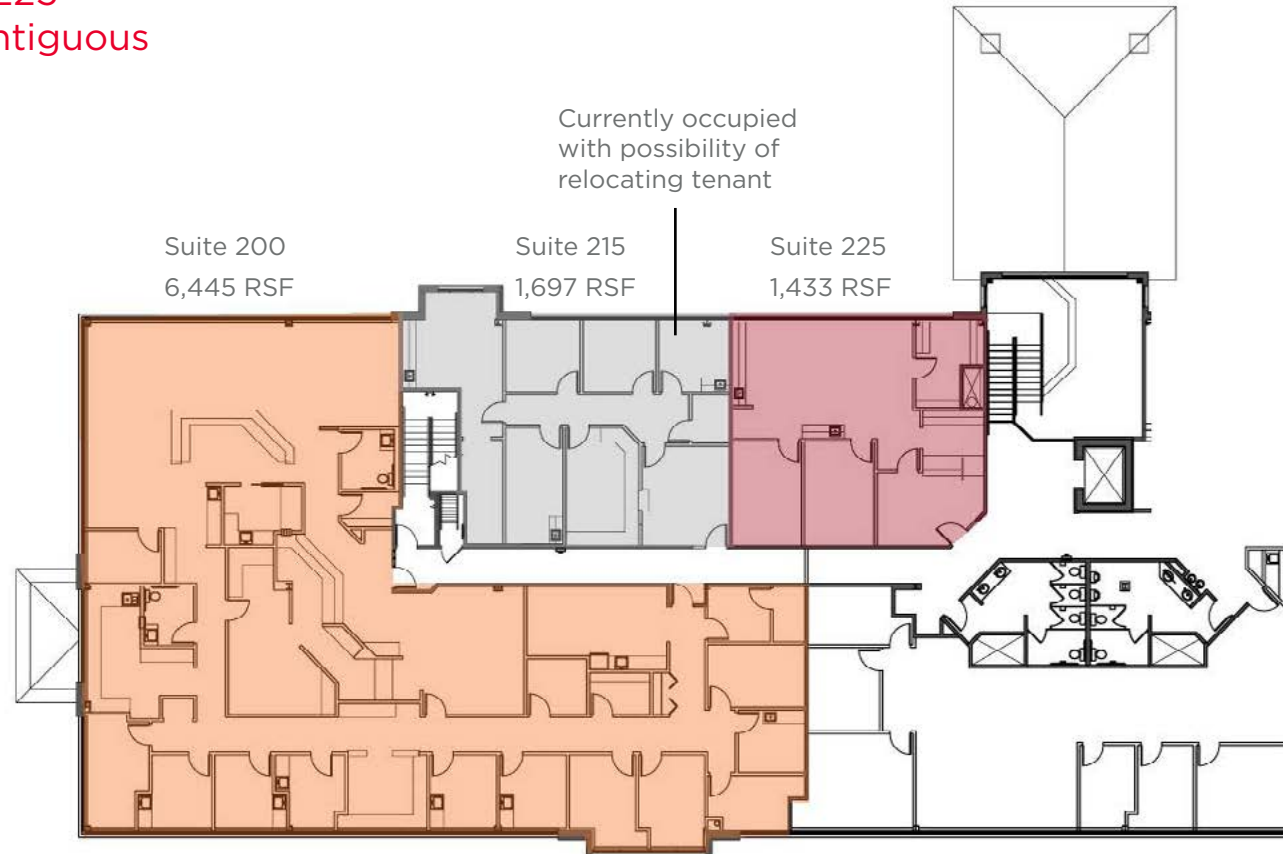
HOME

HIGHLIGHTS

AVAILABLE

LOCATION

Suite 200/215/225 10,454 RSF Contiguous



For more information, please contact:

Eric King
Senior Director
+1 651 734 2385
eric.king@cushwake.com

Ann Stahley
Director
+1 952 465 3317
ann.stahley@cushwake.com

Cushman & Wakefield
3500 American Blvd W Suite 200
Minneapolis, MN 55431
cushmanwakefield.com

Oak Ridge East Professional Building

675 Nicollet Blvd. E., Burnsville, MN



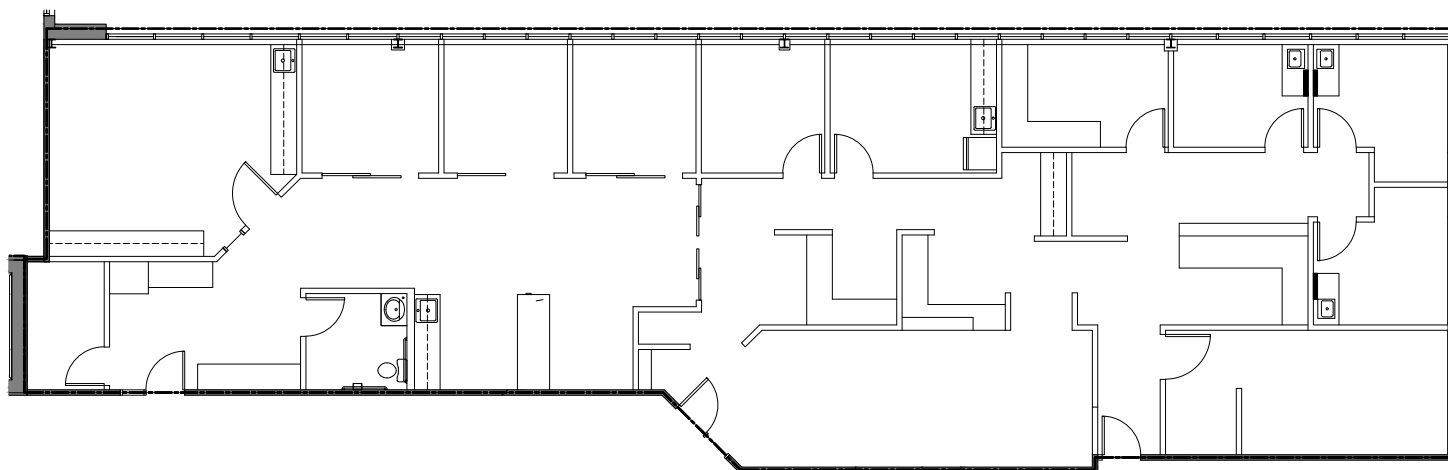
HOME

HIGHLIGHTS

AVAILABLE

LOCATION

Suite 245
3,432 RSF



For more information, please contact:

Eric King
Senior Director
+1 651 734 2385
eric.king@cushwake.com

Ann Stahley
Director
+1 952 465 3317
ann.stahley@cushwake.com

Cushman & Wakefield
3500 American Blvd W Suite 200
Minneapolis, MN 55431
cushmanwakefield.com