

NOW AVAILABLE

FOR LEASE

TECHNOLOGY PARK

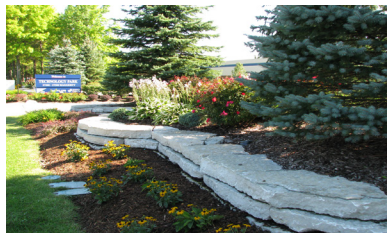
SUITES FROM 2,250 SF TO 7,550 SF

27200-27300 HAGGERTY ROAD :: FARMINGTON HILLS, MICHIGAN

Managed and maintained at the highest standards by Promanas of Ann Arbor, Michigan



- + Outstanding six building high technology “flex” park totaling 224,000 square feet setting upon 20 acres at Haggerty and Twelve Mile Roads
- + Ideal location with immediate access to the M-5 Connector at the Twelve Mile Interchange, spilling into I-96, I-696 and I-275
- + Current tenants include Sirius XM Radio, Golder Associates Inc., VI Engineering, among others
- + The property is zoned IRO (Industrial Research Office) allowing for a wide variety of uses
- + Shop/warehouse areas have 15’ clear to the joist
- + All vacant suites have grade level door access to shop/warehouse areas



ASKING RATE: \$9.75 NNN

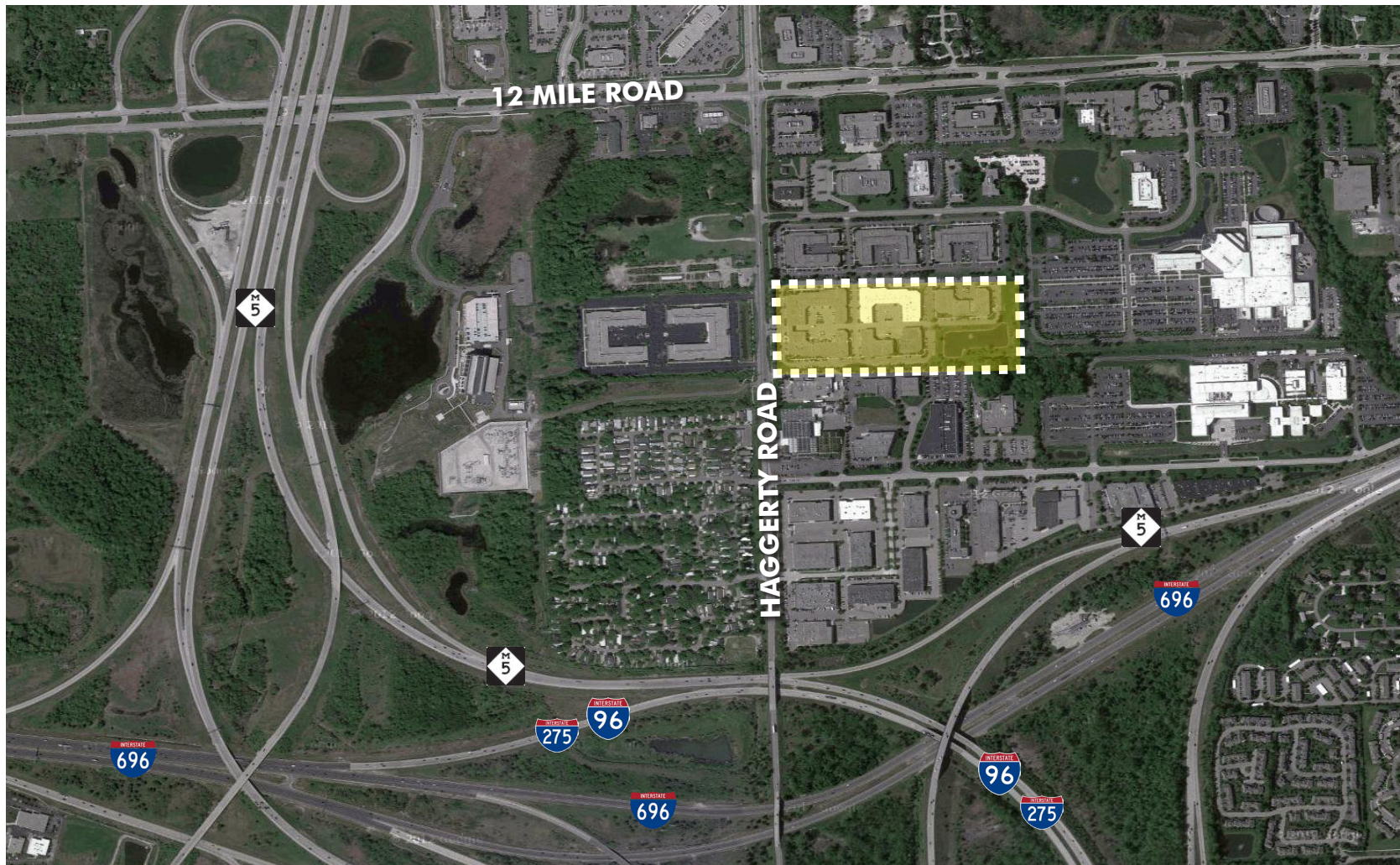
APPROXIMATE OPERATING EXPENSES & REAL ESTATE TAXES (NNN): \$3.00
Expenses include refuse and HVAC preventative maintenance

www.cbre.com/detroit

CBRE

FOR LEASE
TECHNOLOGY PARK

27200-27300 HAGGERTY ROAD
FARMINGTON HILLS, MICHIGAN



© 2018 CBRE, Inc. This information has been obtained from sources believed reliable. We have not verified it and make no guarantee, warranty or representation about it. Any projections, opinions, assumptions or estimates used are for example only and do not represent the current or future performance of the property. You and your advisors should conduct a careful, independent investigation of the property to determine to your satisfaction the suitability of the property for your needs. Photos herein are the property of their respective owners and use of these images without the express written consent of the owner is prohibited. CBRE and the CBRE logo are service marks of CBRE, Inc. and/or its affiliated or related companies in the United States and other countries. All other marks displayed on this document are the property of their respective owners.

EDWARD WUJEK
Senior Vice President
+1 248 351 2058
edward.wujek@cbre.com

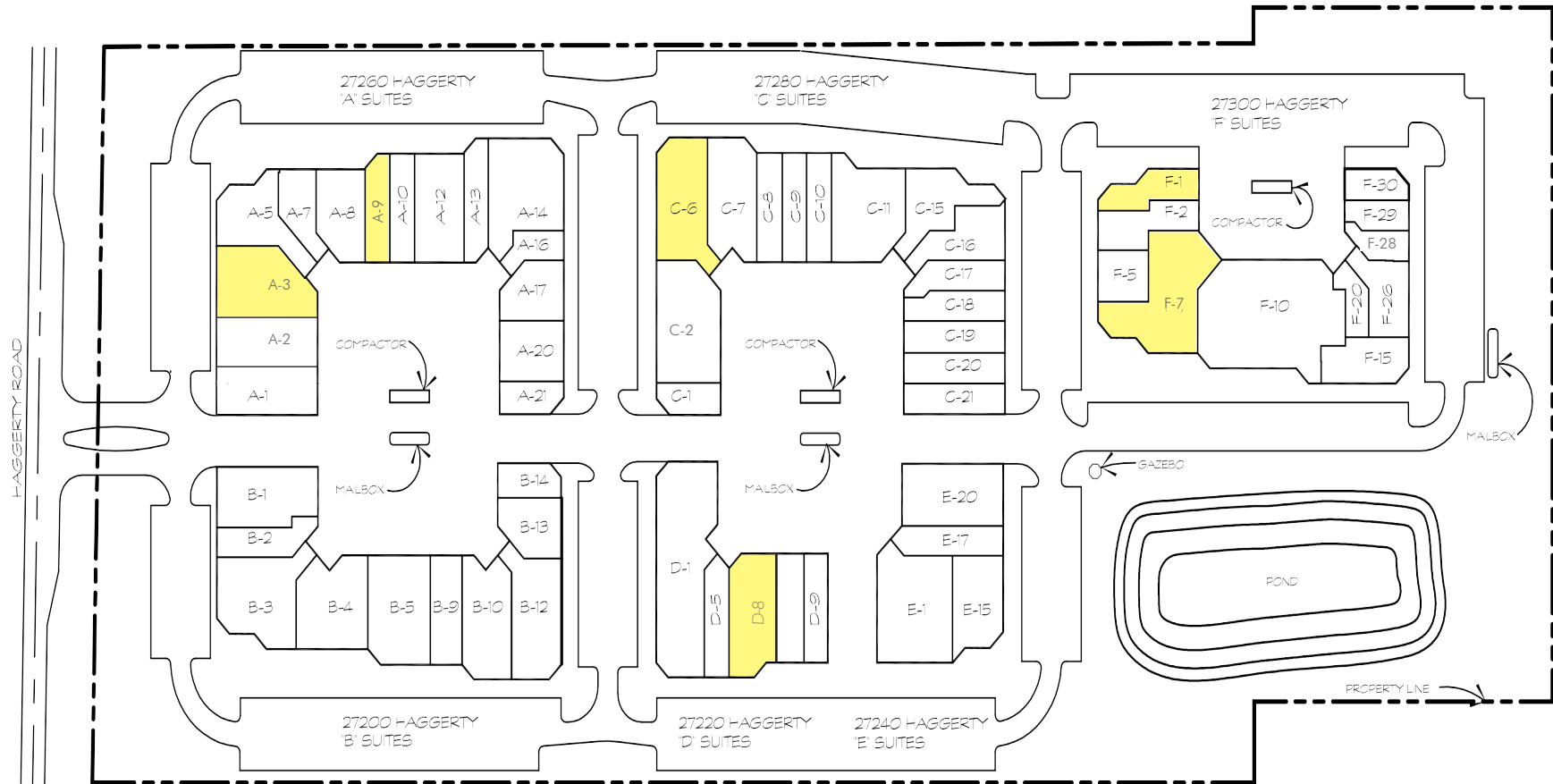
PHILIP SPRAGUE
Senior Associate
+1 248 351 2032
philip.sprague@cbre.com

KELLY STACY
Associate
+1 248 936 6852
kelly.stacy@cbre.com

CBRE
www.cbre.com/detroit

FOR LEASE TECHNOLOGY PARK

27200-27300 HAGGERTY ROAD
FARMINGTON HILLS, MICHIGAN



Available Suites

© 2018 CBRE, Inc. This information has been obtained from sources believed reliable. We have not verified it and make no guarantee, warranty or representation about it. Any projections, opinions, assumptions or estimates used are for example only and do not represent the current or future performance of the property. You and your advisors should conduct a careful, independent investigation of the property to determine to your satisfaction the suitability of the property for your needs. Photos herein are the property of their respective owners and use of these images without the express written consent of the owner is prohibited. CBRE and the CBRE logo are service marks of CBRE, Inc. and/or its affiliated or related companies in the United States and other countries. All other marks displayed on this document are the property of their respective owners.

EDWARD WUJEK
Senior Vice President
+1 248 351 2058
edward.wujek@cbre.com

PHILIP SPRAGUE
Senior Associate
+1 248 351 2032
philip.sprague@cbre.com

KELLY STACY
Associate
+1 248 936 6852
kelly.stacy@cbre.com

CBRE

www.cbre.com/detroit

FOR LEASE TECHNOLOGY PARK

27200-27300 HAGGERTY ROAD
FARMINGTON HILLS, MICHIGAN

AVAILABLE SUITES - SUITES FROM 2,250 SF TO 7,550 SF

Suite #	Office Area	Warehouse Area	Total SF
A3	"To Suit"	"To Suit"	4,902 SF
A9	1,750 SF	500 SF	2,250 SF
C6	4,083 SF	937 SF	5,020 SF
D8	0 SF	3,277 SF	3,277 SF
F1	2,208 SF	267 SF	2,475 SF
F7	5,806 SF	1,744 SF	7,550 SF

EDWARD WUJEK

Senior Vice President
+1 248 351 2058
edward.wujek@cbre.com

PHILIP SPRAGUE

Senior Associate
+1 248 351 2032
philip.sprague@cbre.com

KELLY STACY

Associate
+1 248 936 6852
kelly.stacy@cbre.com

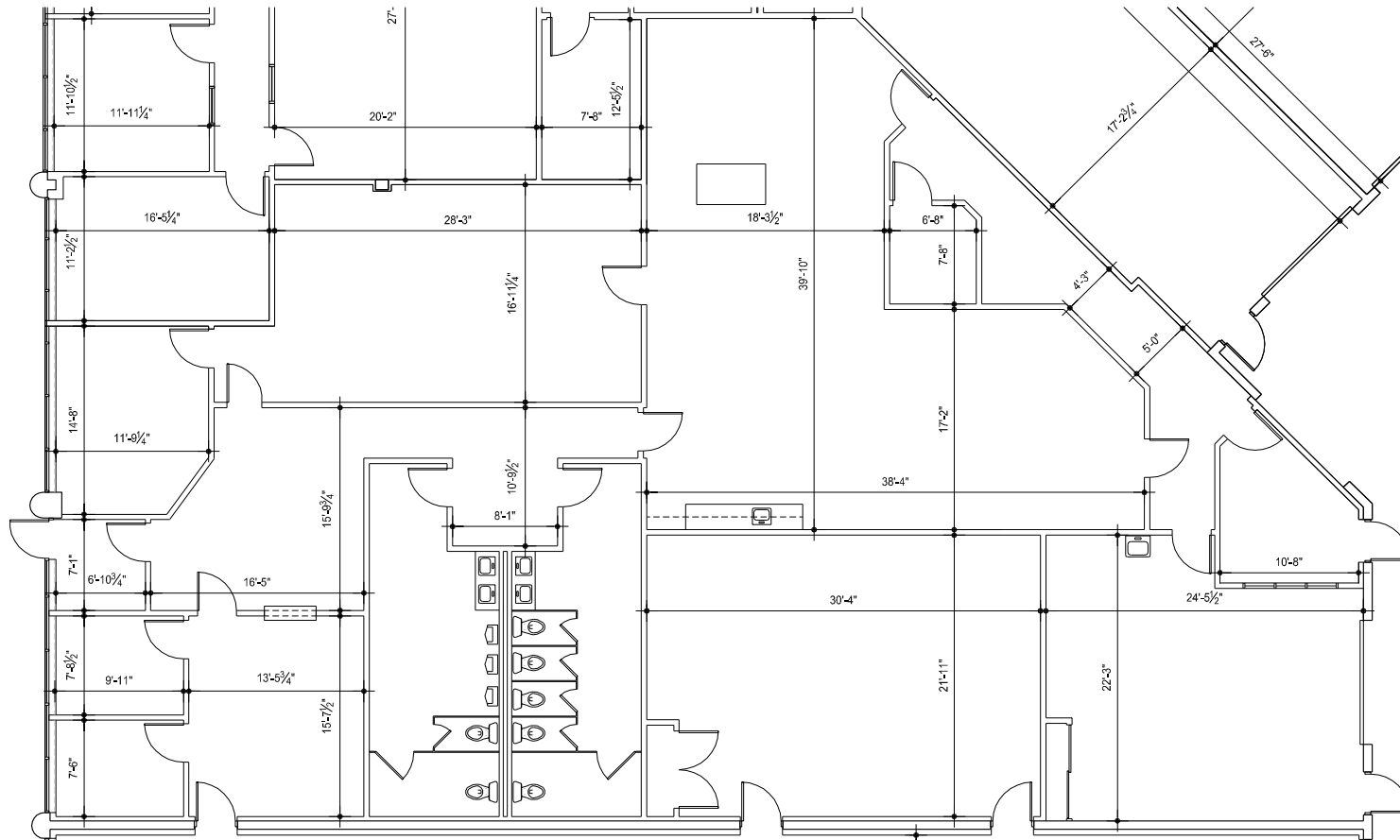
CBRE

www.cbre.com/detroit

FOR LEASE TECHNOLOGY PARK

27200-27300 HAGGERTY ROAD
FARMINGTON HILLS, MICHIGAN

SUITE A3 - 4,902 SF



EDWARD WUJEK
Senior Vice President
+1 248 351 2058
edward.wujek@cbre.com

PHILIP SPRAGUE
Senior Associate
+1 248 351 2032
philip.sprague@cbre.com

KELLY STACY
Associate
+1 248 936 6852
kelly.stacy@cbre.com

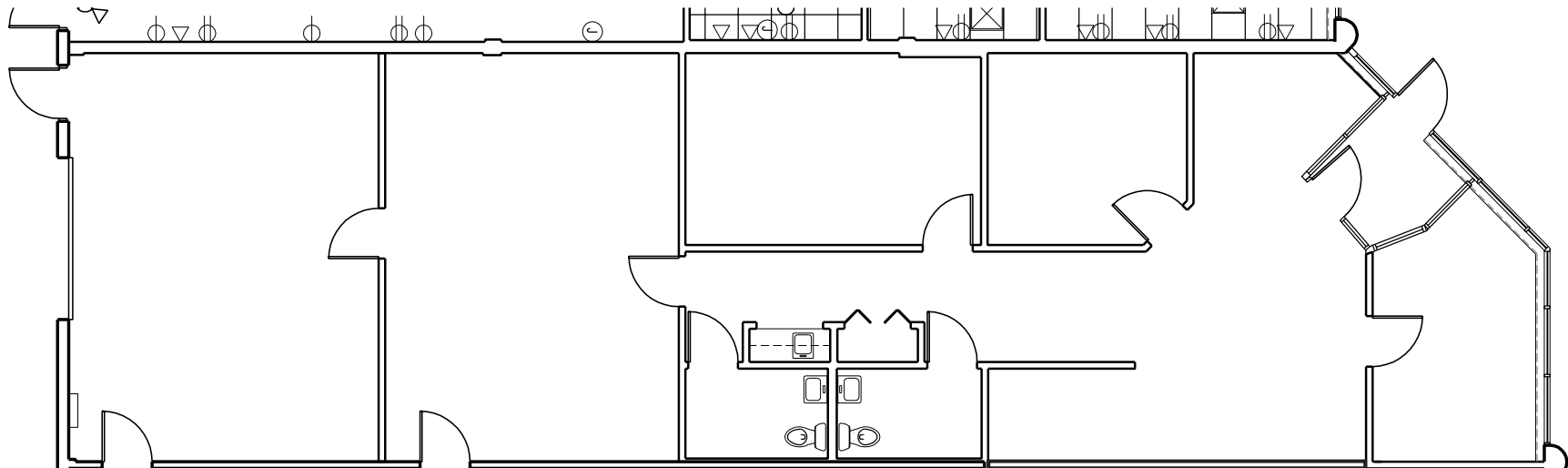
CBRE

www.cbre.com/detroit

FOR LEASE
TECHNOLOGY PARK

27200-27300 HAGGERTY ROAD
FARMINGTON HILLS, MICHIGAN

SUITE A9 - 2,250 SF



EDWARD WUJEK
Senior Vice President
+1 248 351 2058
edward.wujek@cbre.com

PHILIP SPRAGUE
Senior Associate
+1 248 351 2032
philip.sprague@cbre.com

KELLY STACY
Associate
+1 248 936 6852
kelly.stacy@cbre.com

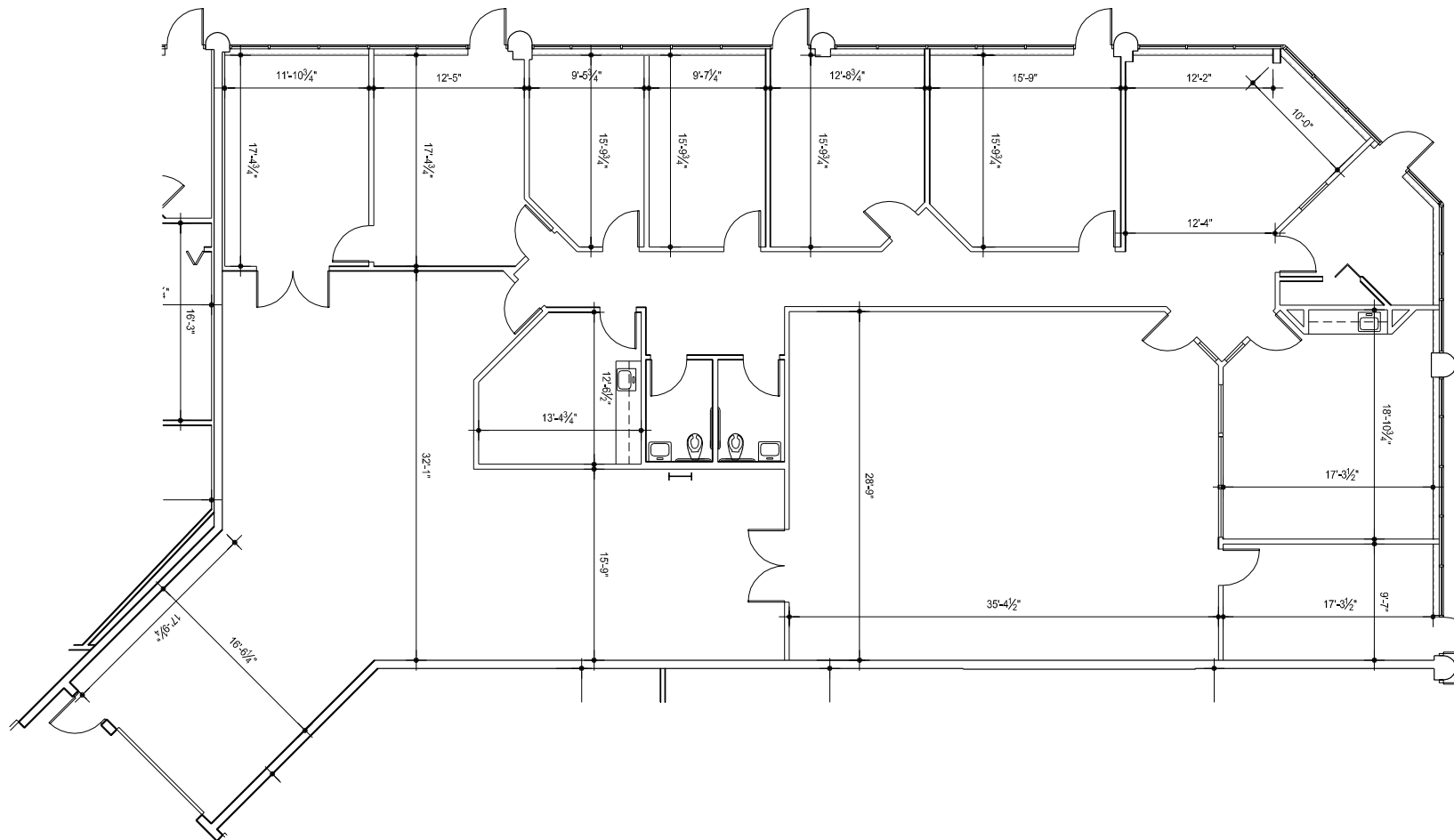
CBRE

www.cbre.com/detroit

FOR LEASE TECHNOLOGY PARK

27200-27300 HAGGERTY ROAD
FARMINGTON HILLS, MICHIGAN

SUITE C6 - 5,020 SF
AVAILABLE 30 - 60 DAYS



EDWARD WUJEK
Senior Vice President
+1 248 351 2058
edward.wujek@cbre.com

PHILIP SPRAGUE
Senior Associate
+1 248 351 2032
philip.sprague@cbre.com

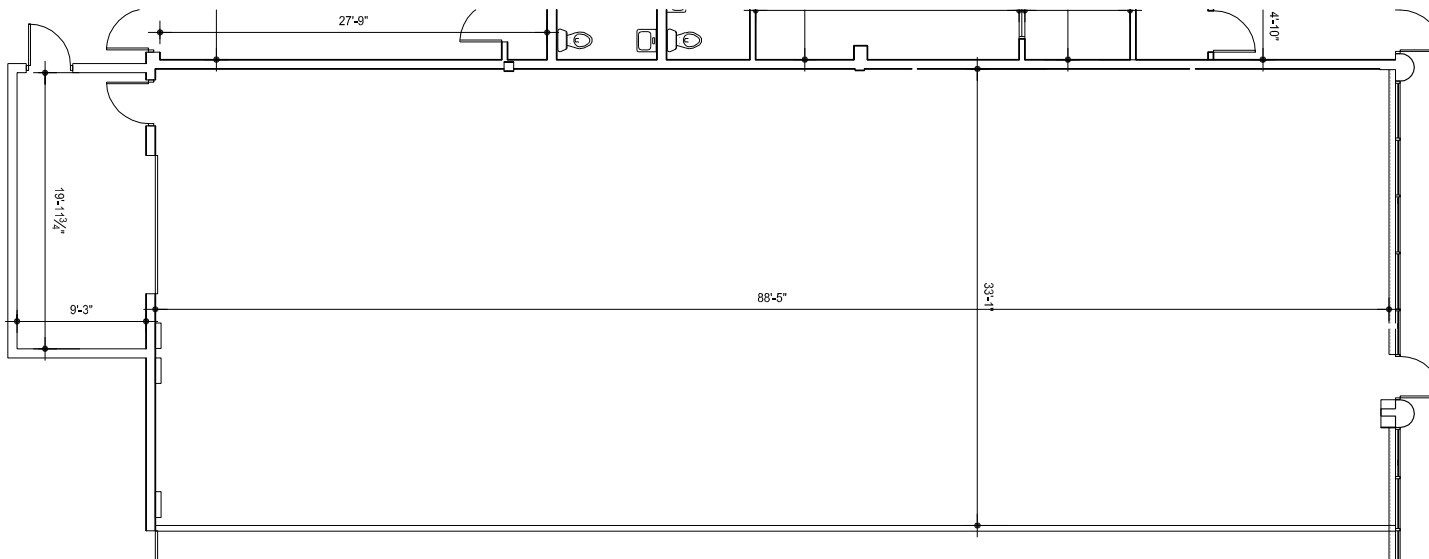
KELLY STACY
Associate
+1 248 936 6852
kelly.stacy@cbre.com

CBRE
www.cbre.com/detroit

FOR LEASE
TECHNOLOGY PARK

27200-27300 HAGGERTY ROAD
FARMINGTON HILLS, MICHIGAN

SUITE D8 - 3,277 SF



EDWARD WUJEK
Senior Vice President
+1 248 351 2058
edward.wujek@cbre.com

PHILIP SPRAGUE
Senior Associate
+1 248 351 2032
philip.sprague@cbre.com

KELLY STACY
Associate
+1 248 936 6852
kelly.stacy@cbre.com

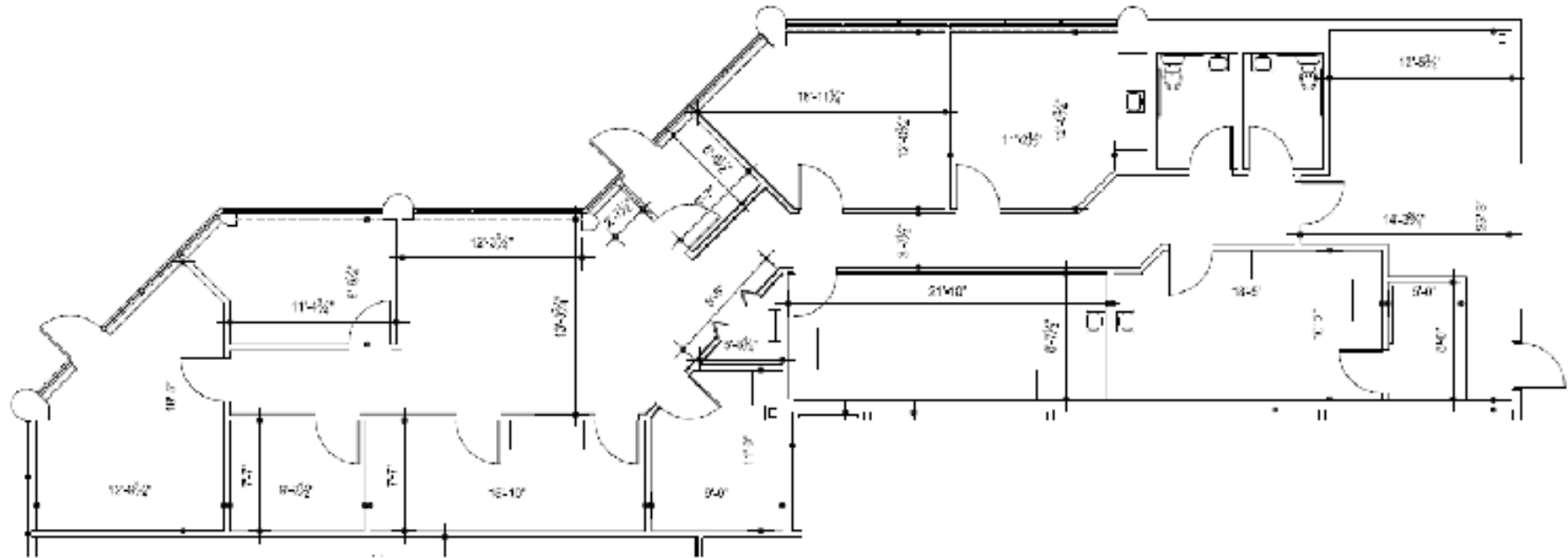
CBRE

www.cbre.com/detroit

FOR LEASE
TECHNOLOGY PARK

27200-27300 HAGGERTY ROAD
FARMINGTON HILLS, MICHIGAN

SUITE F1 - 2,475 SF



EDWARD WUJEK
Senior Vice President
+1 248 351 2058
edward.wujek@cbre.com

PHILIP SPRAGUE
Senior Associate
+1 248 351 2032
philip.sprague@cbre.com

KELLY STACY
Associate
+1 248 936 6852
kelly.stacy@cbre.com

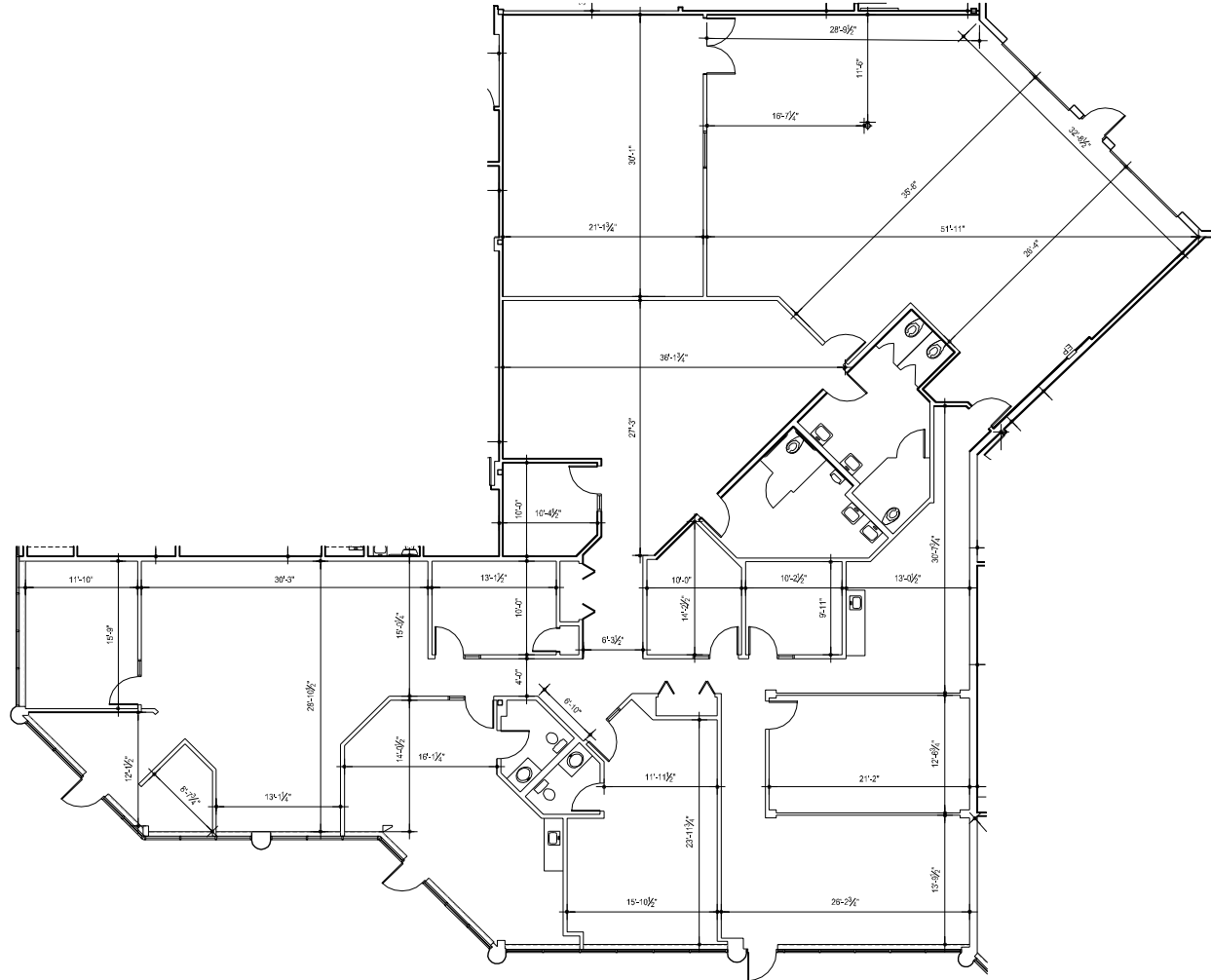
CBRE

www.cbre.com/detroit

FOR LEASE
TECHNOLOGY PARK

27200-27300 HAGGERTY ROAD
FARMINGTON HILLS, MICHIGAN

SUITE F7 - 7,550 SF



EDWARD WUJEK
Senior Vice President
+1 248 351 2058
edward.wujek@cbre.com

PHILIP SPRAGUE
Senior Associate
+1 248 351 2032
philip.sprague@cbre.com

KELLY STACY
Associate
+1 248 936 6852
kelly.stacy@cbre.com



www.cbre.com/detroit