

FOR SALE

Former Bank Building

5325 US HWY 98 S, LAKELAND FL 33813

RETAIL



PROPERTY INFO

HIGHLIGHTS

- + Building built in 2012
- + Annual Taxes: \$25,932.44
- + Located at the Hard Corner of a Publix Anchored Shopping Center
- + 5 Motor Banking Lanes
- + Located at a Traffic Signal

Details

Building Size	4,300 SF
Land Size	1.54 AC
Parcel ID	24-29-11-281013-000020
Sales Price	\$1,350,000

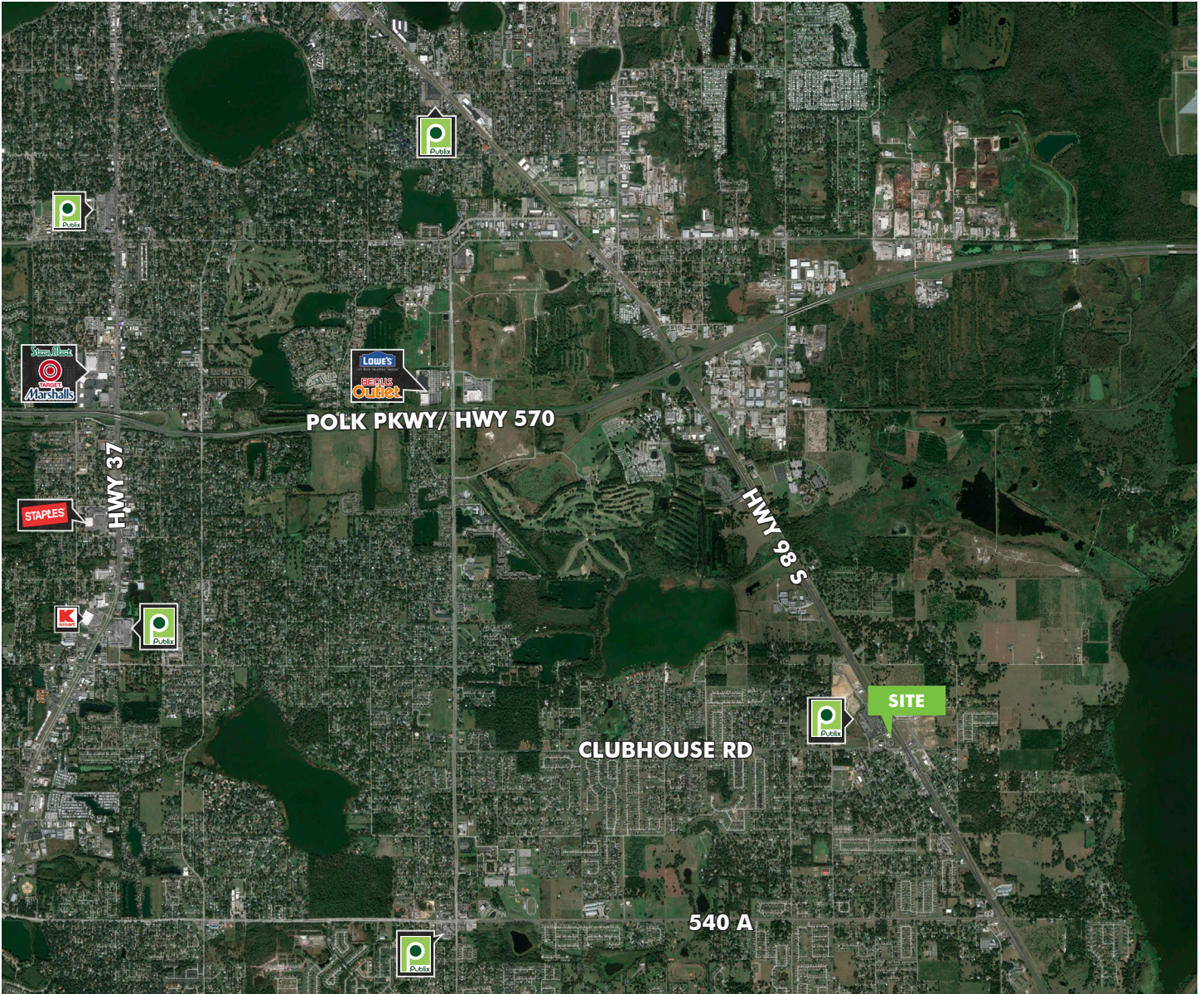
FOR SALE

Former Bank Building

5325 US HWY 98 S, LAKELAND, FL 33813

RETAIL

MACRO AERIAL



FOR SALE

Former Bank Building

5325 US HWY 98 S, LAKELAND, FL 33813

RETAIL

MICRO AERIAL



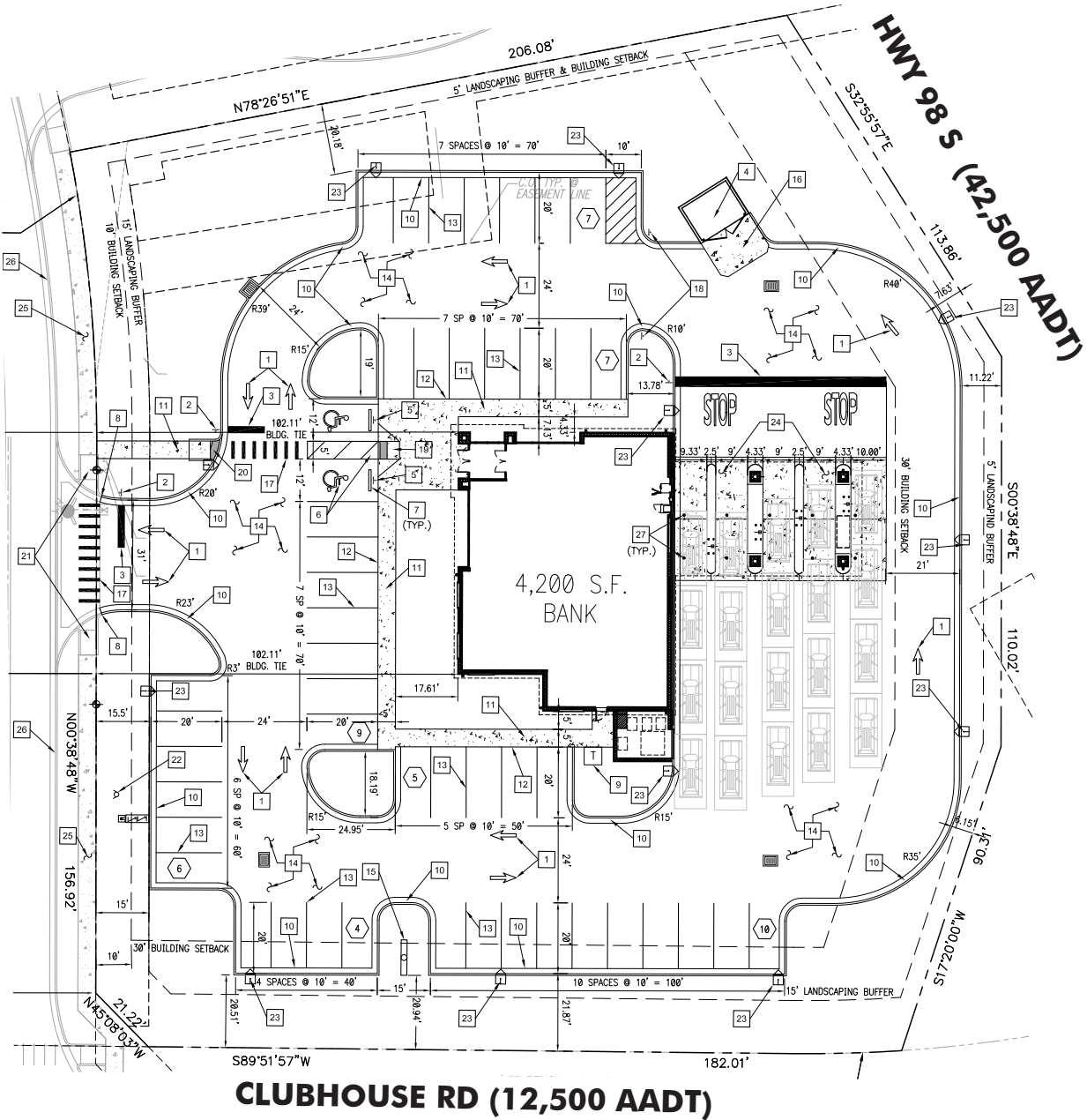
FOR SALE

Former Bank Building

5325 US HWY 98 S, LAKELAND, FL 33813

RETAIL

SITE PLAN



FOR SALE

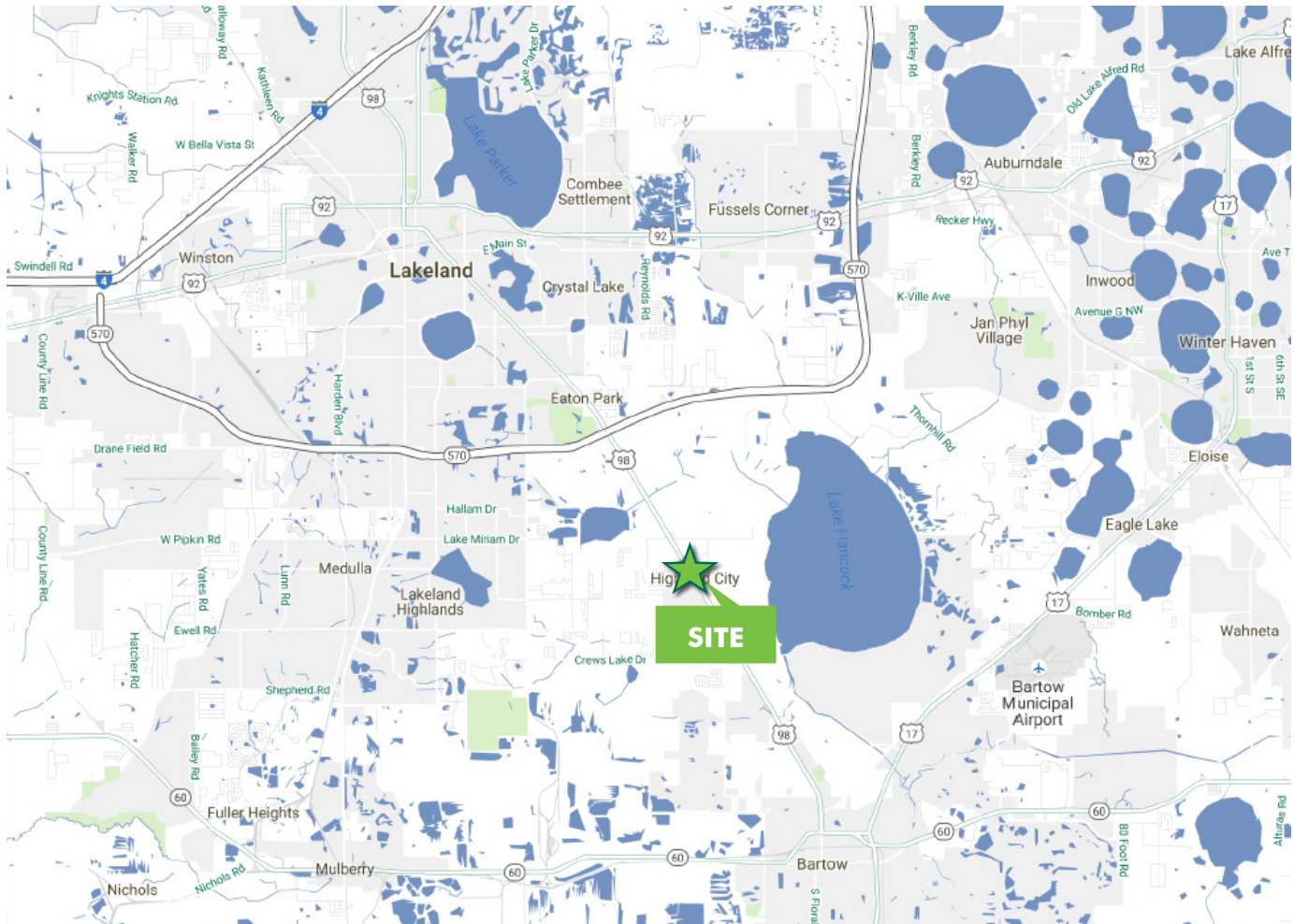
Former Bank Building

5325 US HWY 98 S, LAKELAND, FL 33813

RETAIL

2017 ESTIMATED DEMOGRAPHICS

	1 MILE	3 MILES	5 MILES
Population	6,238	24,542	74,269
Households	2,177	8,520	27,132
2010-2017 Annual Population Growth	0.61%	1.45%	1.23%
Median Household Income	\$58,949	\$70,873	\$59,996
Average Household Income	\$76,381	\$88,674	\$82,042



CONTACT US

James Mitchell

Executive Vice President
+1 407 404 5024
james.mitchell@cbre.com

Kristen Knowlton

Associate
+1 407 404 5037
kristen.knowlton@cbre.com

CBRE, Inc. | Licensed Real Estate Broker
200 S. Orange Avenue | Suite 2100 | Orlando, FL 32801

© 2018 CBRE, Inc. This information has been obtained from sources believed reliable. We have not verified it and make no guarantee, warranty or representation about it. Any projections, opinions, assumptions or estimates used are for example only and do not represent the current or future performance of the property. You and your advisors should conduct a careful, independent investigation of the property to determine to your satisfaction the suitability of the property for your needs. Photos herein are the property of their respective owners and use of these images without the express written consent of the owner is prohibited. CBRE and the CBRE logo are service marks of CBRE, Inc. and/or its affiliated or related companies in the United States and other countries. All other marks displayed on this document are the property of their respective owners.

www.cbre.com/orlando

