

# *SOUTH LIND SQUARE*

114,000 SF Industrial Flex/Office Project





# *AERIAL VIEW FACING EAST*





# AERIAL VIEW FACING WEST





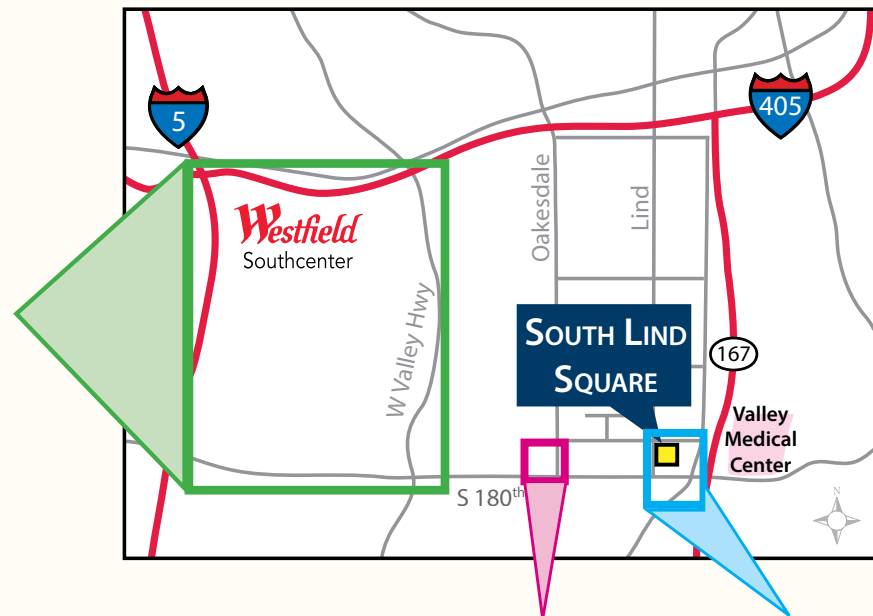
# SOUTH LIND SQUARE INFORMATION SHEET



<b>Project size:</b>	114,000 RSF total in three buildings	
<b>Location:</b>	Lind Avenue SW and SW 41st Street in Renton, Washington. Immediate access to Highway 167; five minutes to I-405	
<b>Communications available:</b>	State-of-the-art telecommunication service provided through CenturyLink (including CenturyLink Fiber) and Comcast Business Cable Service	
<b>Operating expenses:</b>	Estimated costs and expenses in operation, maintenance and repair of the Building and Common Areas for 2018 are \$5.05 per RSF. Tenant is responsible for its separately metered electricity/gas and janitorial service.	
<b>HVAC and janitorial:</b>	Tenant has complete control 24/7 of rooftop HVAC units specific to each suite. Tenant chooses own janitorial service.	
<b>Transit:</b>	South Lind Square has Metro bus stops ( <i>Route 906</i> ) in front of the property. The Tukwila Station, where the Sounder and all Rapid Rides pass through, is 2 miles away.	
<b>Current tenants include:</b>	Honeywell, Advantage Sales & Marketing, Hanger Clinic, and Mohawk Industries	
<b>Distance to:</b>	Valley Medical Center:	0.7 miles
	Tukwila Station ( <i>AmTrak and Sounder trains; RapidRide Transit</i> ):	2 miles
	Kent	5 miles
	SeaTac International Airport:	7 miles
	Bellevue:	14 miles
	Seattle:	16 miles
	Tacoma:	24 miles

# *BIRD'S EYE VIEW*



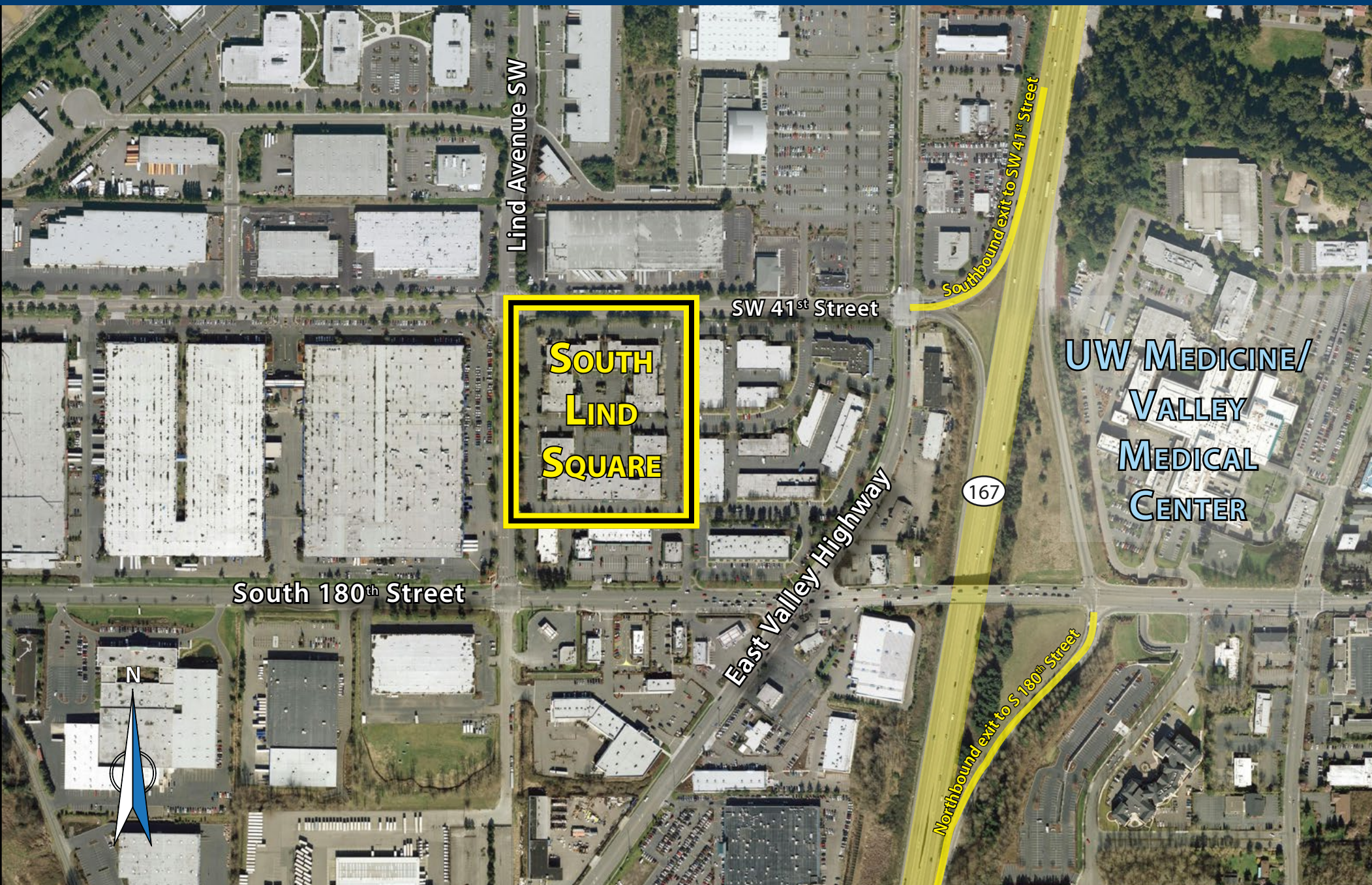


# SOUTH LIND SQUARE *Area* *Amenities*





# *SOUTH LIND SQUARE AND SURROUNDING AREA*





# *SOUTH LIND SQUARE*






# *SOUTH LIND SQUARE*







**Michael Hemphill**  
206-336-5325  
mhempill@andoverco.com

**Jim Bisset**  
206-336-5334  
jbisset@andoverco.com

 **THE ANDOVER COMPANY, INC.**  
CORFAC INTERNATIONAL

***SOUTH LIND SQUARE***