



Denny Building

2200 Sixth Avenue | Seattle, WA



Sublease Opportunity

4,612 RSF | Floor 4

Sublease through October 31, 2019

HIGHLIGHTS

- » **NEW RATE:** \$22.00/RSF full service
- » Available now
- » 10 private offices along window line
- » 2 conference rooms, 1 break room, kitchen, and copy room
- » South end cap

AMENITIES

- » Next to Amazon corporate HQ
- » Building conference room
- » Indoor parking

Blair Stern

+1 206 521 2668

blair.stern@am.jll.com

Mark Fox

+1 206 521 2677

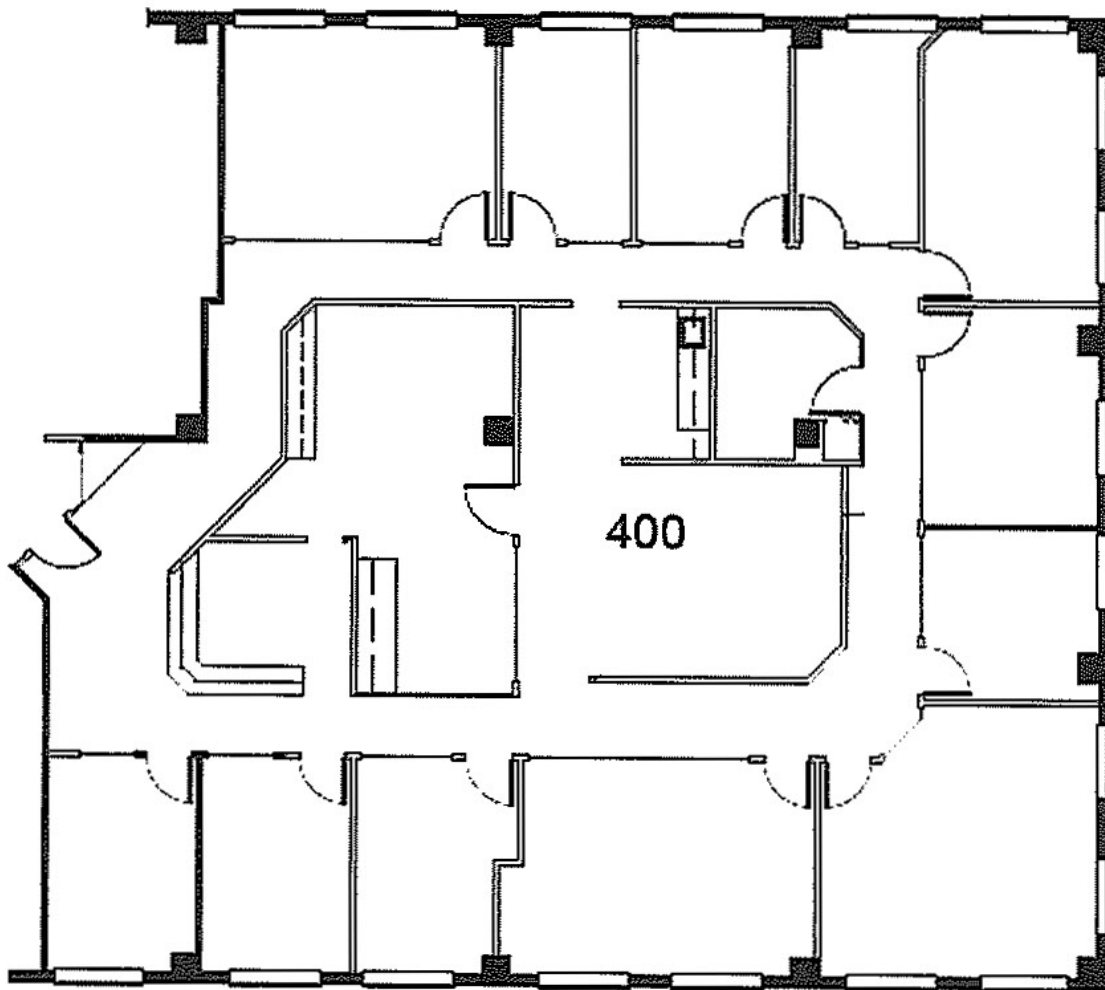
mark.fox@am.jll.com



Denny Building

2200 Sixth Avenue | Seattle, WA

4,612 RSF | Floor 4



Blair Stern

+1 206 521 2668

blair.stern@am.jll.com

Mark Fox

+1 206 521 2677

mark.fox@am.jll.com

jll.com/seattle

DISCLAIMER

Although information has been obtained from sources deemed reliable, Owner, Jones Lang LaSalle, and/or their representatives, brokers or agents make no guarantees as to the accuracy of the information contained herein, and offer the Property without express or implied warranties of any kind. The Property may be withdrawn without notice. If the recipient of this information has signed a confidentiality agreement regarding this matter, this information is subject to the terms of that agreement. ©2016. Jones Lang LaSalle. All rights reserved.