

FOR LEASE

TUSTIN CORPORATE PLAZA

1401 N. Tustin Avenue • Santa Ana, California

MEDICAL AND OFFICE SUITES AVAILABLE



Exclusively listed by:

ALLEN BASSO

Senior Vice President

License ID# 01298152

949.790.3130

abasso@leeirvine.com

BRIAN GARBUTT

Senior Vice President

License ID# 01215482

949.790.3166

bgarbutt@leeirvine.com

ERIC DARNELL

Senior Associate

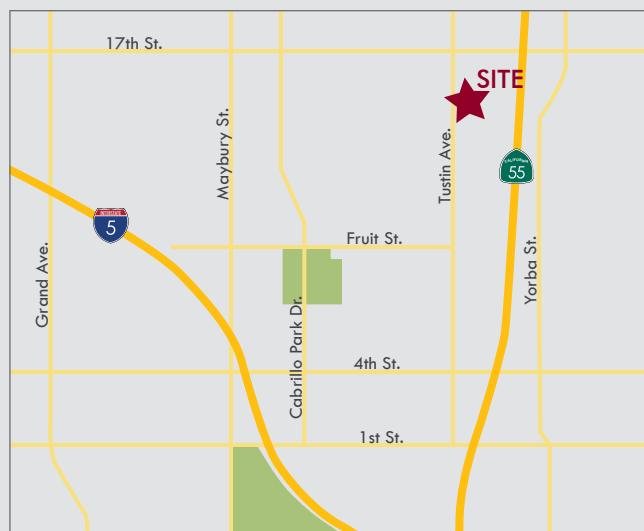
License ID# 01888743

949.790.3157

edarnell@leeirvine.com

PROPERTY FEATURES

- Medical and office suites available
- 3-story medical/office building
- Easy access and convenient parking
- Free surface parking (reserved parking available upon request)
- Professionally managed
- Ideally suited for therapists, law firms, doctors and accountants
- Centrally located near restaurants, banks and major freeways



LEE & ASSOCIATES

COMMERCIAL REAL ESTATE SERVICES

GARBUTT | BASSO | PHAM | DARNELL | CEMO | LY

No warranty or representation is made to the accuracy of the foregoing information. Terms of sale or lease and availability are subject to change or withdrawal without notice.

PROPERTY GROUP
MAXIMIZING PROPERTY VALUES™

FOR LEASE

TUSTIN CORPORATE PLAZA

1401 N. Tustin Avenue • Santa Ana, California

MEDICAL AND OFFICE SUITES AVAILABLE

AVAILABILITY

Suite	Type	Sq. Ft.	Lease Rate	Description
105	Office	2,393	\$2.00 FSG	5 offices, large open area and 2 entrances into suite.
135	Office	713	\$2.00 FSG	2 offices and small open area.
155	Office	2,007	\$2.00 FSG	Large reception/waiting area, 5 offices, storage/data area and open area.
260	Office	1,298	\$2.00 FSG	Call for details.
300	Office	3,076	\$2.00 FSG	Call for details.
305	Office	1,355 SF	\$2.00 FSG	4 private offices.
330	Medical	1,561	\$2.30 FSG	Waiting area, reception, 2 offices, 1 exam room and open area.
340	Medical	2,569	\$2.30 FSG	Fully built out dental space.
350	Office	2,569	\$2.00 FSG	



Exclusively listed by:

ALLEN BASSO

Senior Vice President
License ID# 01298152
949.790.3130
abasso@leeirvine.com

BRIAN GARBUTT

Senior Vice President
License ID# 01215482
949.790.3166
bgarbutt@leeirvine.com

ERIC DARNELL

Senior Associate
License ID# 01888743
949.790.3157
edarnell@leeirvine.com

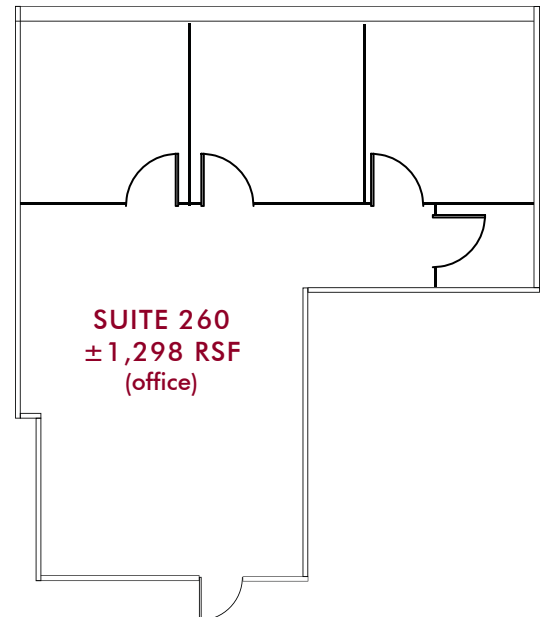
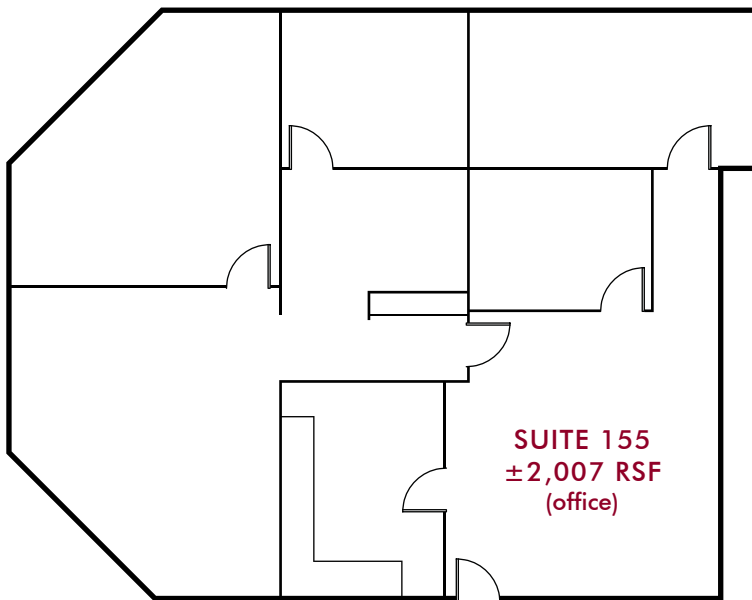
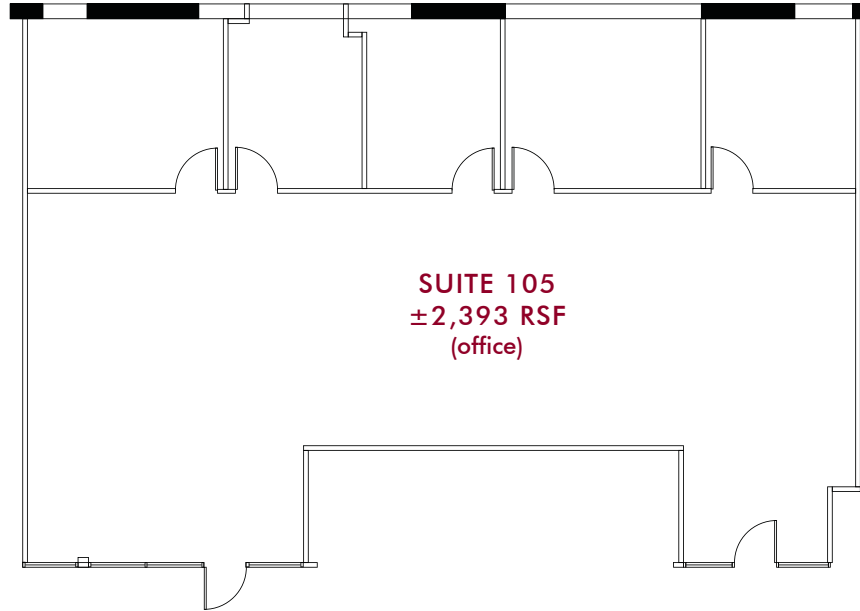


FOR LEASE

TUSTIN CORPORATE PLAZA

1401 N. Tustin Avenue • Santa Ana, California

MEDICAL AND OFFICE SUITES AVAILABLE



Exclusively listed by:

ALLEN BASSO
Senior Vice President
License ID# 01298152
949.790.3130
abasso@lee-associates.com

BRIAN GARBUTT
Senior Vice President
License ID# 01215482
949.790.3166
bgarbutt@lee-associates.com

ERIC DARNELL
Senior Associate
License ID# 01888743
949.790.3157
edarnell@lee-associates.com

 **LEE &
ASSOCIATES**
COMMERCIAL REAL ESTATE SERVICES

GARBUTT | BASSO | PHAM | DARNELL | CEMO | LY

No warranty or representation is made to the accuracy of the foregoing information. Terms of sale or lease and availability are subject to change or withdrawal without notice.

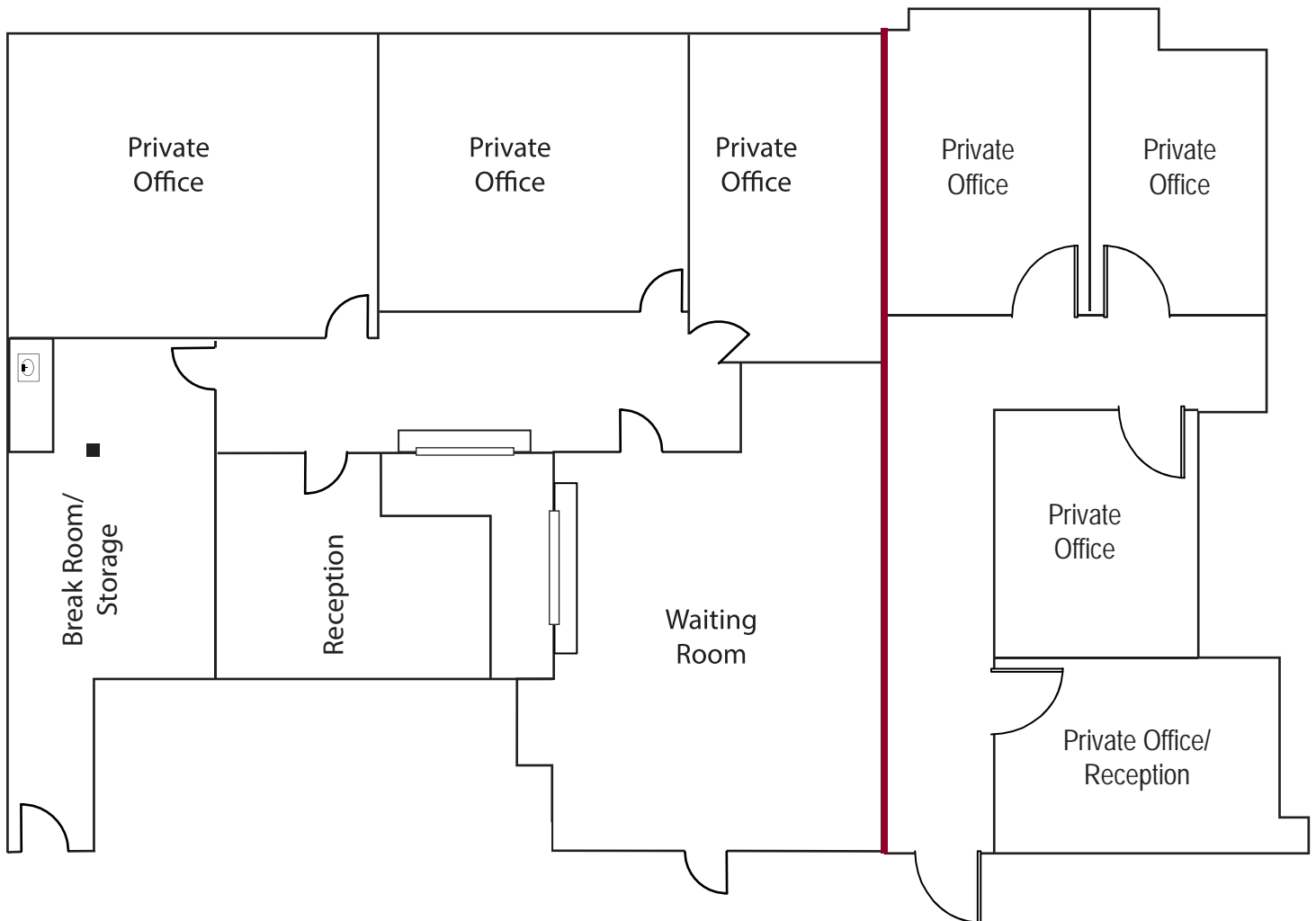
 **PROPERTY GROUP**
MAXIMIZING PROPERTY VALUES™

FOR LEASE

TUSTIN CORPORATE PLAZA

1401 N. Tustin Avenue • Santa Ana, California

MEDICAL AND OFFICE SUITES AVAILABLE



SUITE 300
±3,076 RSF
(office)

SUITE 305
±1,355 RSF
(office)

Exclusively listed by:

ALLEN BASSO
Senior Vice President
License ID# 01298152
949.790.3130
abasso@leeirvine.com

BRIAN GARBUTT
Senior Vice President
License ID# 01215482
949.790.3166
bgarbutt@leeirvine.com

ERIC DARNELL
Senior Associate
License ID# 01888743
949.790.3157
edarnell@leeirvine.com

 **LEE &
ASSOCIATES**
COMMERCIAL REAL ESTATE SERVICES

GARBUTT | BASSO | PHAM | DARNELL | LY | CEMO

No warranty or representation is made to the accuracy of the foregoing information. Terms of sale or lease and availability are subject to change or withdrawal without notice.

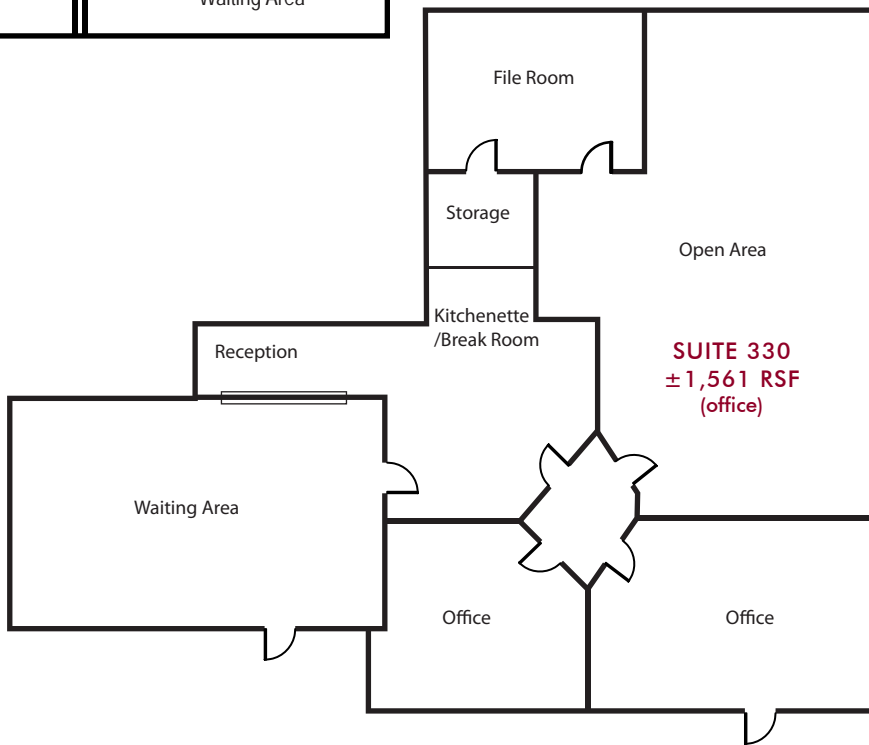
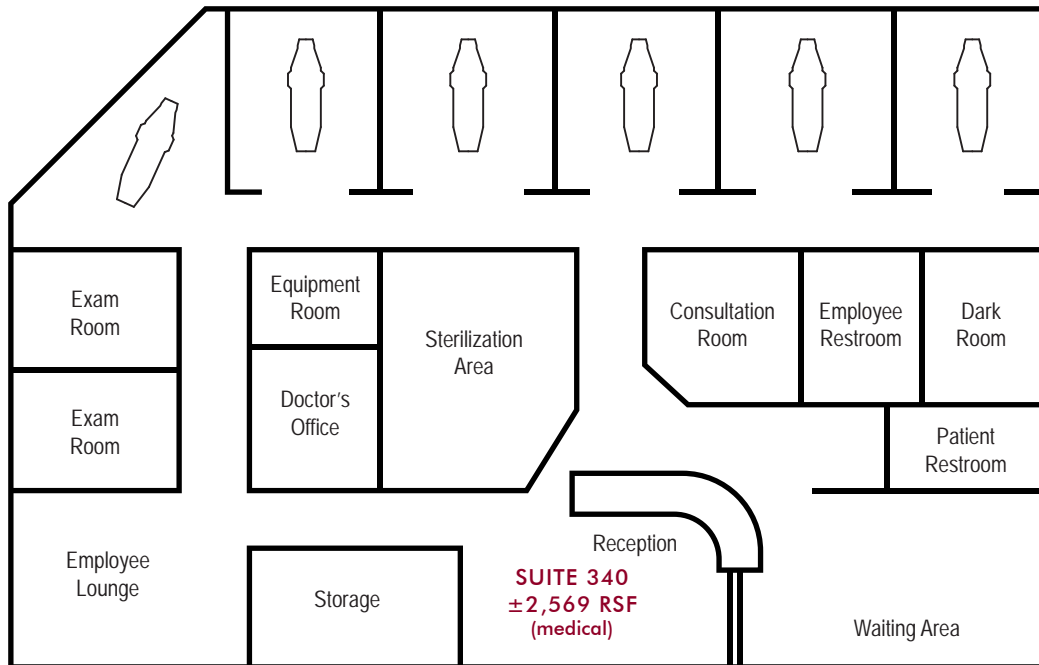
 **PROPERTY GROUP**
MAXIMIZING PROPERTY VALUES™

FOR LEASE

TUSTIN CORPORATE PLAZA

1401 N. Tustin Avenue • Santa Ana, California

MEDICAL AND OFFICE SUITES AVAILABLE



Exclusively listed by:

ALLEN BASSO
Senior Vice President
License ID# 01298152
949.790.3130
abasso@leeirvine.com

BRIAN GARBUTT
Senior Vice President
License ID# 01215482
949.790.3166
bgarbutt@leeirvine.com

ERIC DARNELL
Senior Associate
License ID# 01888743
949.790.3157
edarnell@leeirvine.com

LEE & ASSOCIATES

COMMERCIAL REAL ESTATE SERVICES

GARBUTT | BASSO | PHAM | DARNELL | LY | CEMO

No warranty or representation is made to the accuracy of the foregoing information. Terms of sale or lease and availability are subject to change or withdrawal without notice.

WV PROPERTY GROUP
MAXIMIZING PROPERTY VALUES™